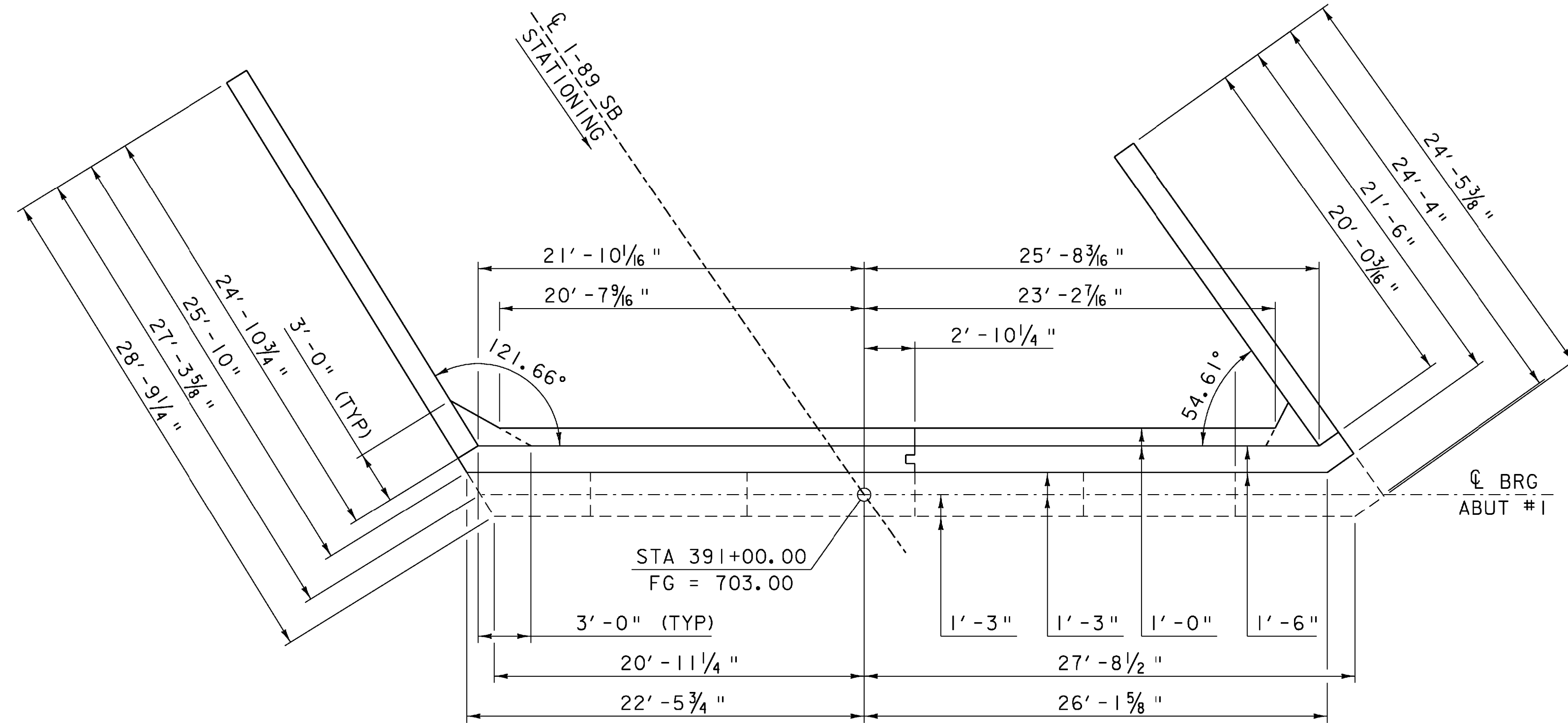
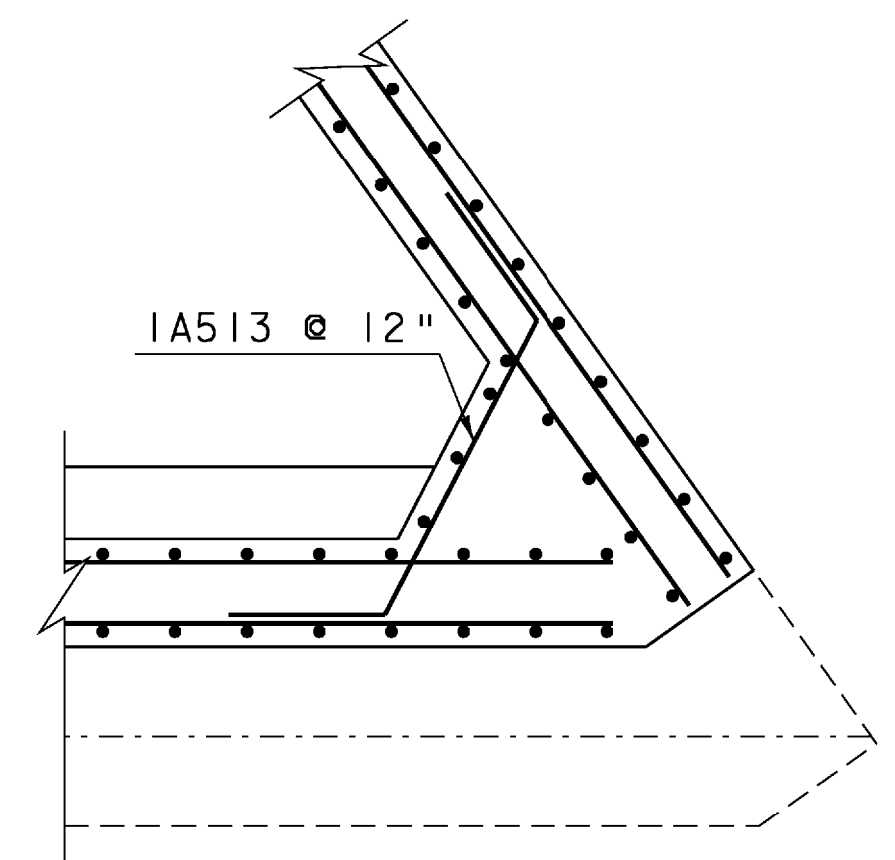


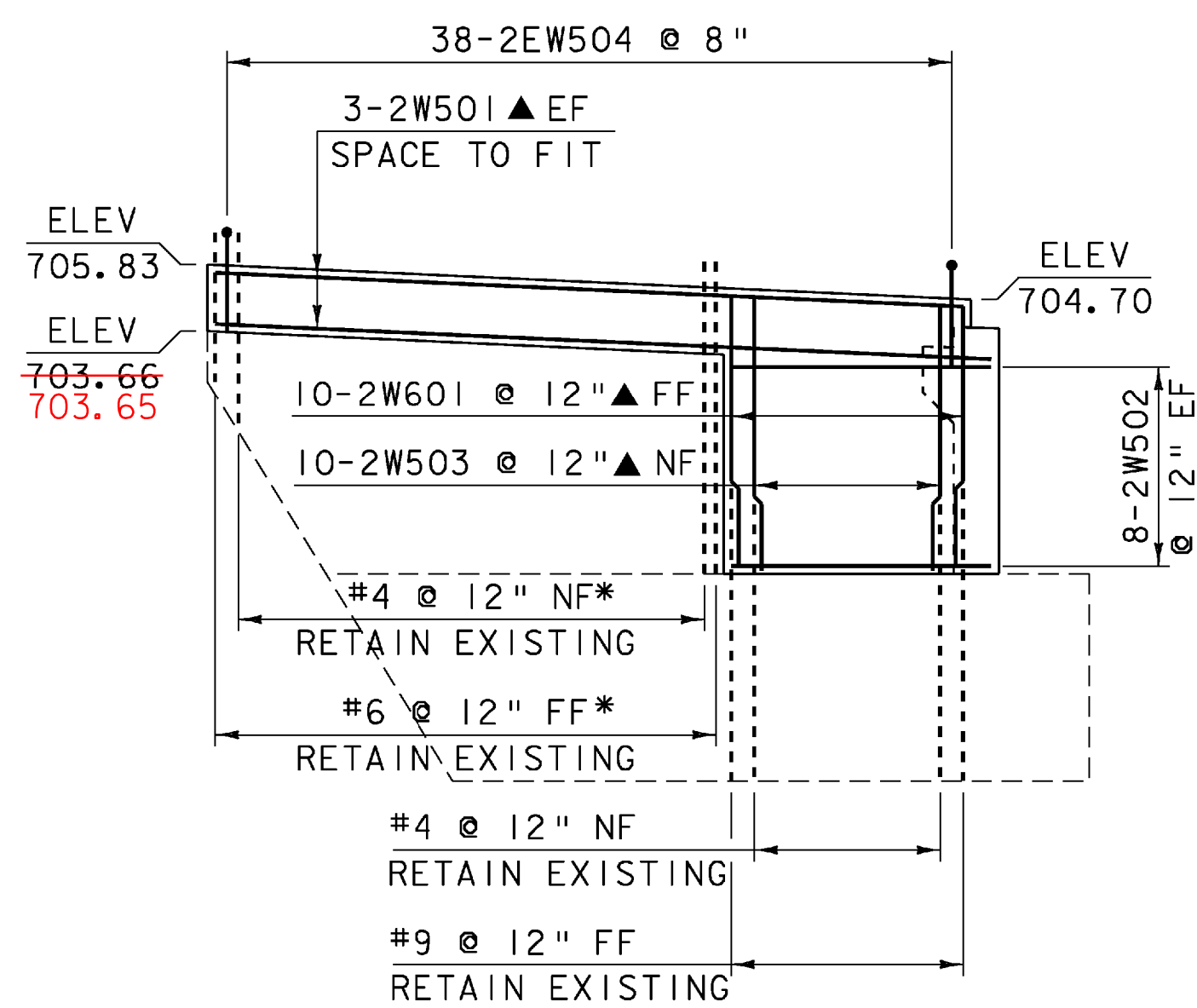
**WINGWALL #2  
CORNER DETAIL**  
SCALE 3/8" = 1'-0"



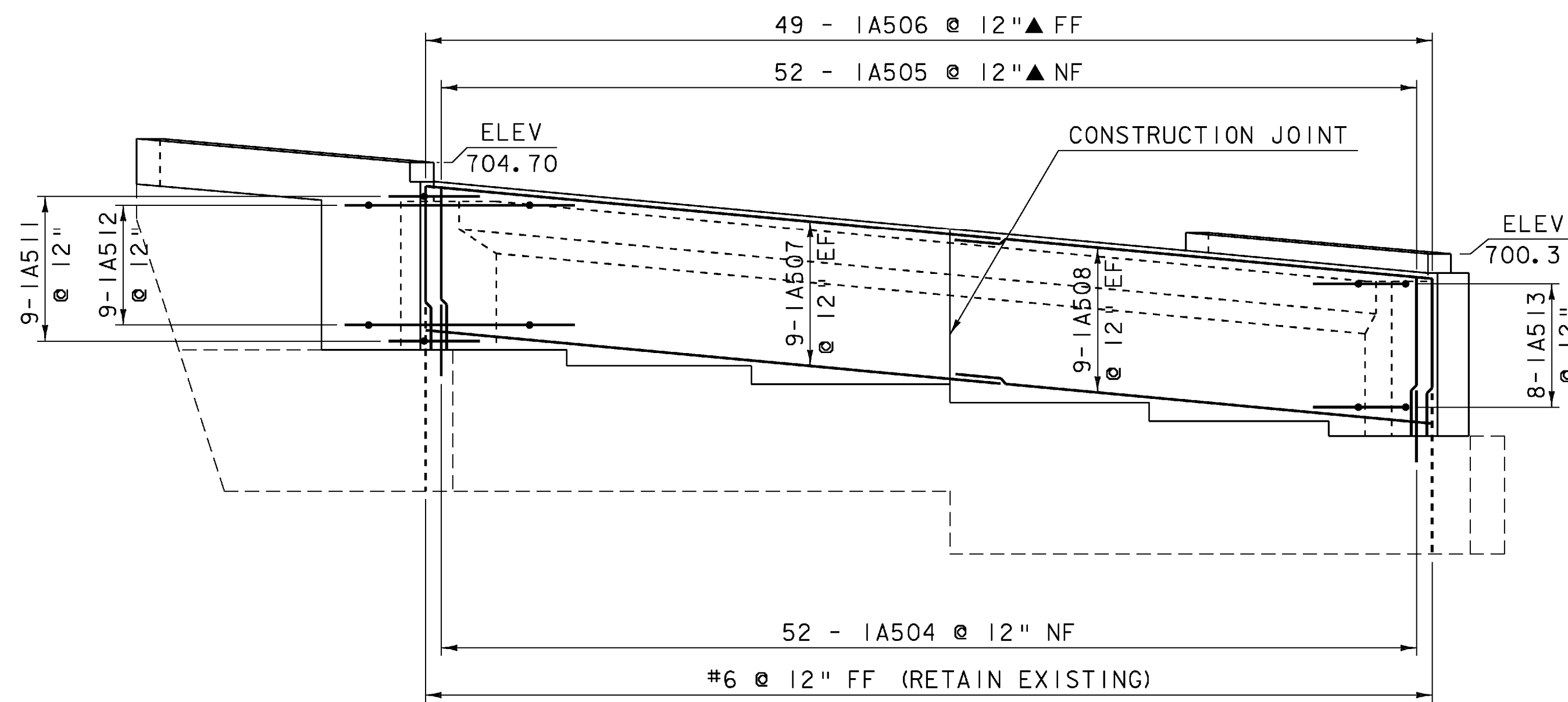
**ABUTMENT #1  
PLAN VIEW**  
SCALE 3/16" = 1'-0"



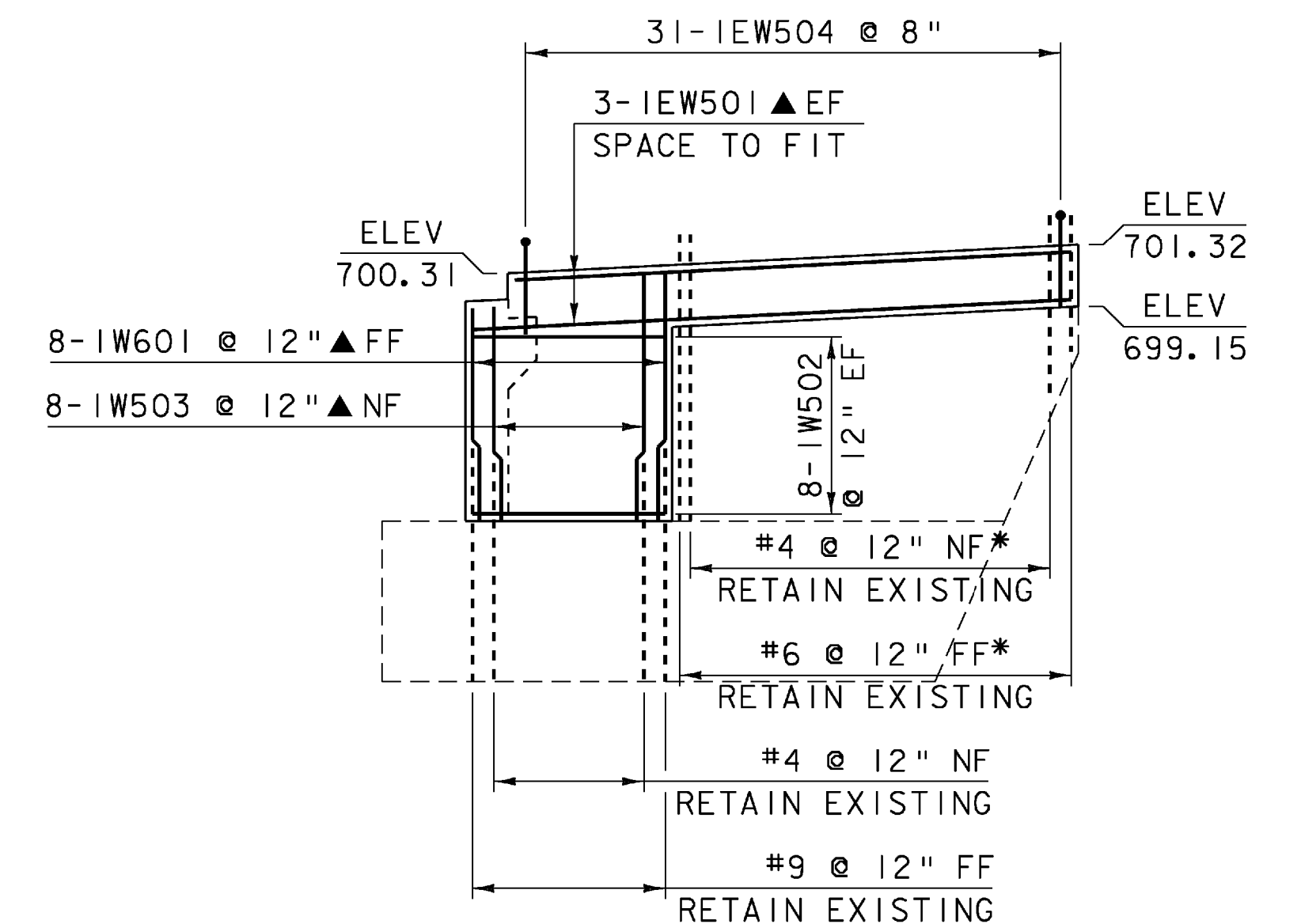
**WINGWALL #1  
CORNER DETAIL**  
SCALE 3/8" = 1'-0"



**WINGWALL #2  
ELEVATION VIEW**  
SCALE 3/16" = 1'-0"



**ABUTMENT #1  
ELEVATION VIEW**  
SCALE 3/16" = 1'-0"



**WINGWALL #1  
ELEVATION VIEW**  
SCALE 3/16" = 1'-0"

**NOTES:**

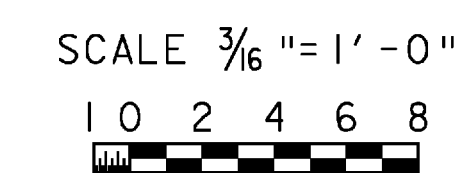
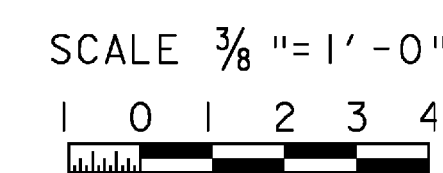
- NF = NEAR FACE
- FF = FAR FACE
- EF = EACH FACE
- ▲ = CUT TO FIT

3" CLEAR UNLESS OTHERWISE SPECIFIED ON PLANS.

ALL LAPS 2'-2" UNLESS OTHERWISE SPECIFIED ON PLANS.

SEE SHEET 55 FOR SECTION DETAILS

\* IF EXISTING REINFORCING STEEL INTERFERES WITH NEW RAIL CONCRETE, BAR MAY BE BENT TO ACCOMMODATE NEW CONCRETE CLEARANCE REQUIREMENTS.



PROJECT: <b>BERLIN</b>	PROJECT NO. : <b>IM 089-1 (20)</b>
DESIGN FILE NAME: 99a270\structures\99a270abut.dgn	PLOT DATE: 05-DEC-2007
IPARM FILE NAME: s99a270abut1.i	DESIGNED BY: G. SPILAK
SQUAD LEADER: C.P. WILLIAMS	DRAWN BY: WEEBER
ABUTMENT #1 DETAILS	CHECKED BY: R. S. YOUNG
	SHEET: 56 OF 104