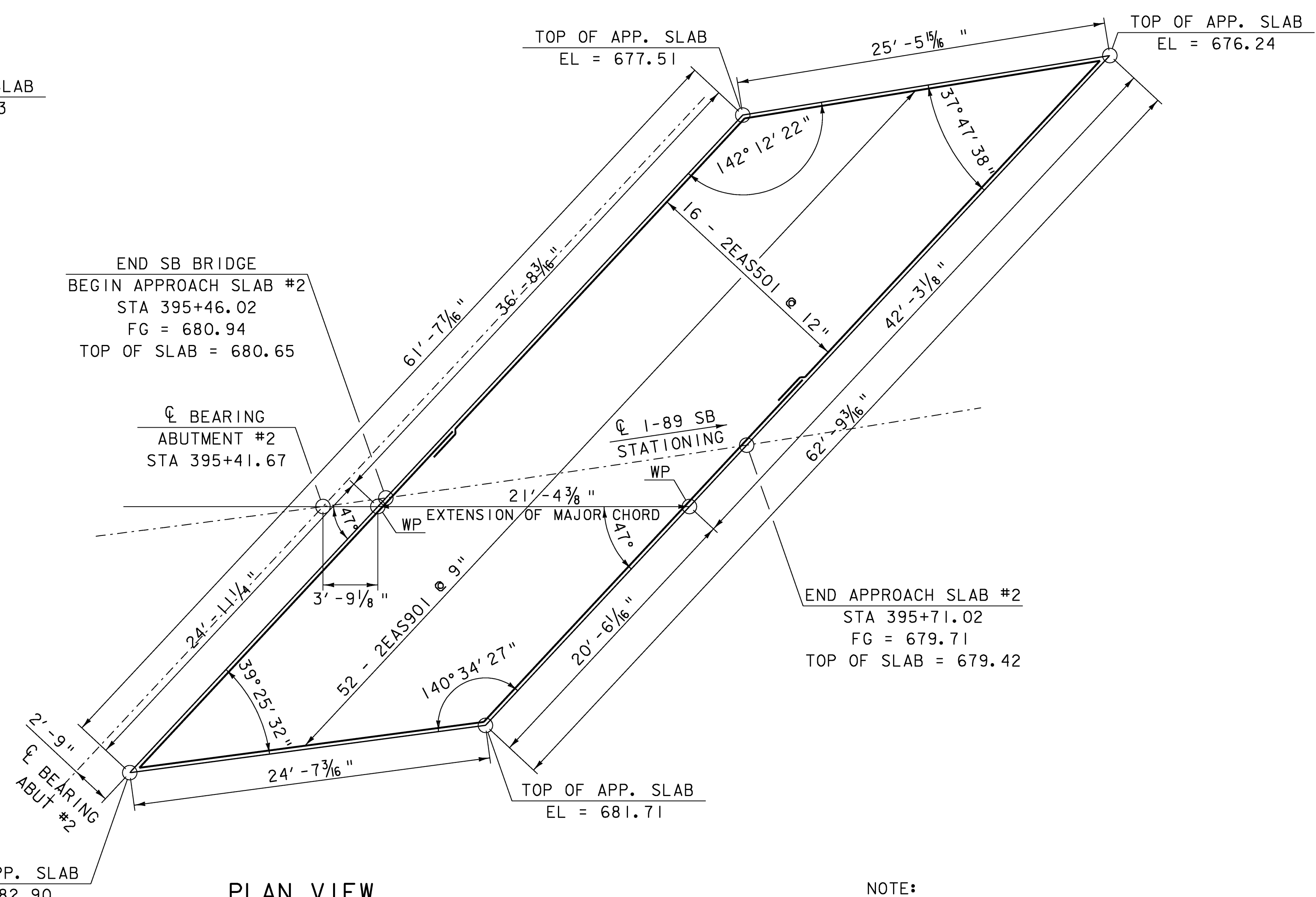


**PLAN VIEW
APPROACH SLAB #1**
SCALE 3/16" = 1'-0"



**PLAN VIEW
APPROACH SLAB #2**
SCALE 3/16" = 1'-0"

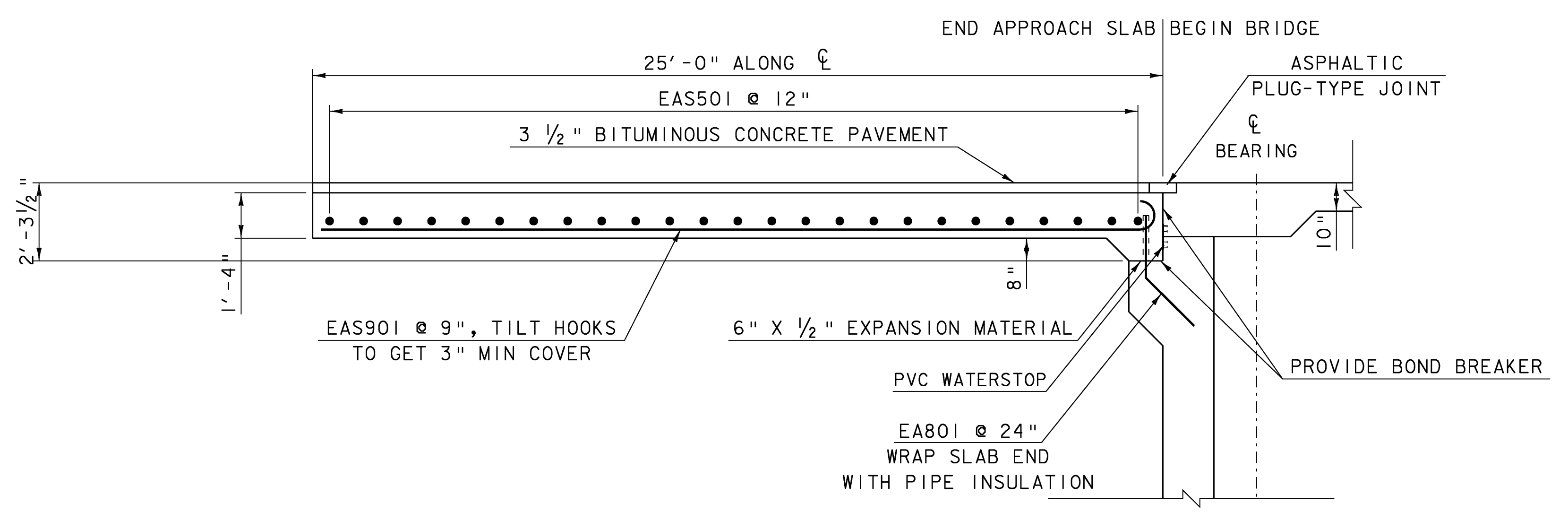
NOTE:
1/2" EXPANSION MATERIAL, PVC WATERSTOP,
PLASTIC DRAINAGE TUBE, AND BOND BREAKER
SHALL BE INCIDENTAL TO ITEM #501.34
"CONCRETE, HIGH PERFORMANCE CLASS B".

NOTES:
NF = NEAR FACE
FF = FAR FACE
EF = EACH FACE
▲ = CUT TO FIT IN FIELD

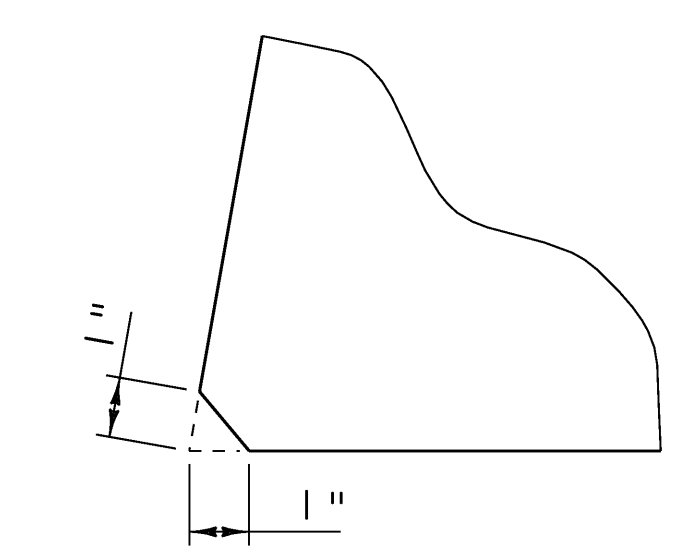
3" CLR. UNLESS OTHERWISE
SPECIFIED ON THE PLANS

ALL LAPS ARE MIN. 2'-2" UNLESS
OTHERWISE NOTED ON PLANS.

ES901 BARS SHALL BE PLACED
PARALLEL TO THE LONGEST SIDE



APPROACH SLAB TYPICAL SECTION
SCALE 3/16" = 1'-0"



ACUTE CORNER DETAIL
N. T. S.

SCALE 3/8" = 1'-0" SCALE 3/16" = 1'-0"
1 0 1 2 3 4 1 0 2 4 6 8

PROJECT: BERLIN	PROJECT NO.: IM 089-1 (20)
DESIGN FILE NAME: 99a270/structures/99a270aps.dgn	PLOT DATE: 05-DEC-2007
IPARM FILE NAME: 99a270apsSB.i	DRAWN BY: E.L. RUSTAY
DESIGNED BY: E.L. RUSTAY	CHECKED BY: R.S. YOUNG
SQUAD LEADER: C.P. WILLIAMS	SHEET: 45 OF 104
APPROACH SLAB #1 & #2 DETAILS	