

CHANGING ELEVATION OF DROP INLET,  
CATCH BASINS, OR MANHOLES  
STA 390+54.67 LT

REMOVAL AND DISPOSAL OF GUARDRAIL  
STA 390+00.00 - STA 390+60.66 RT  
STA 390+61.40 - STA 390+92.47 LT  
STA 395+95.61 - STA 396+00.00 LT  
STA 395+50.09 - STA 396+00.00 RT

HD STEEL BEAM GUARDRAIL, GALVANIZED  
STA 390+03.80 - STA 390+30.30 RT  
STA 395+80.45 - STA 396+00.00 RT  
STA 390+28.50 - STA 396+00.00 RT  
STA 395+03.15 - STA 395+46.30 RT

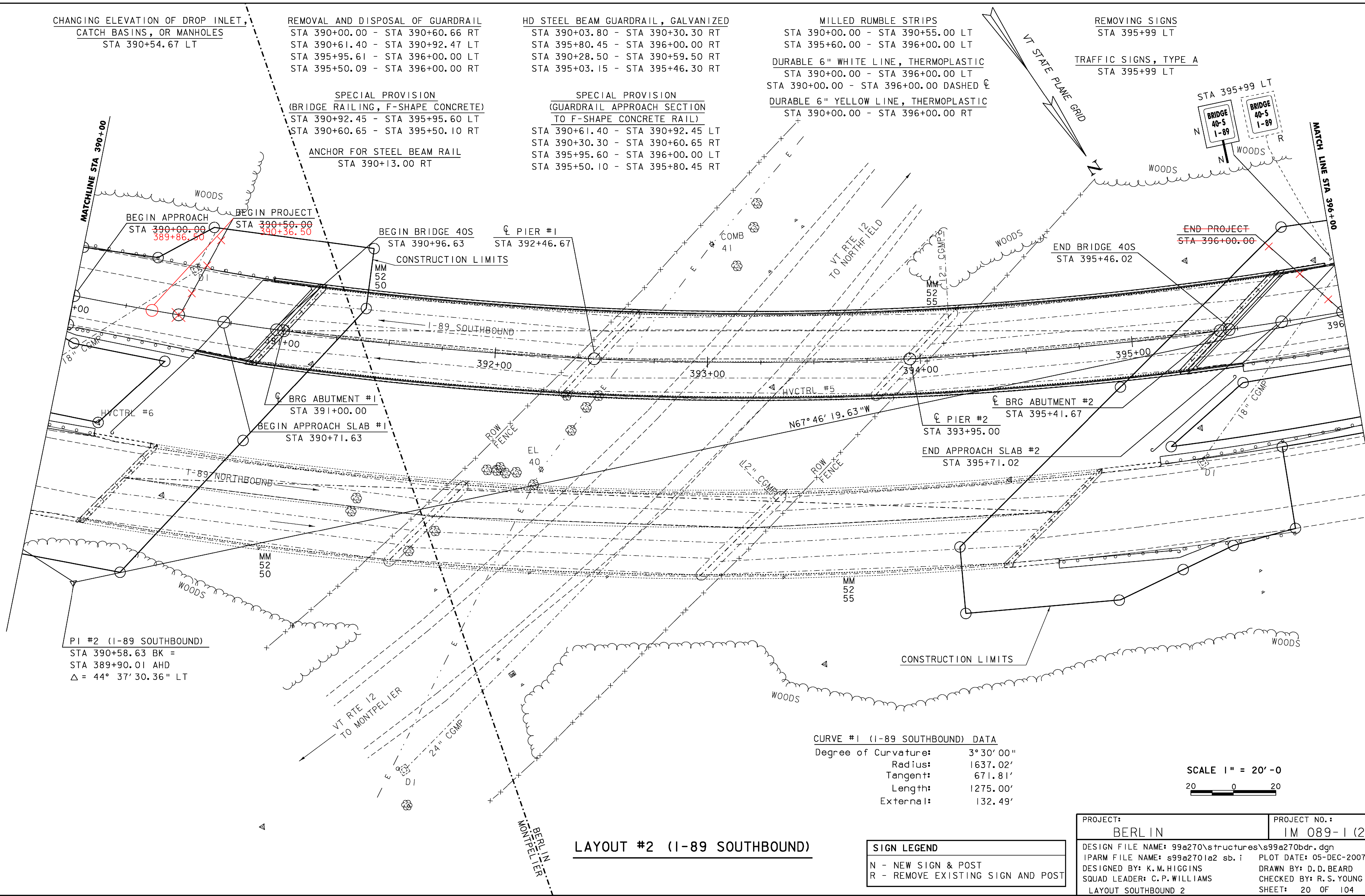
MILLED RUMBLE STRIPS  
STA 390+00.00 - STA 390+55.00 LT  
STA 395+60.00 - STA 396+00.00 LT  
DURABLE 6" WHITE LINE, THERMOPLASTIC  
STA 390+00.00 - STA 396+00.00 LT  
STA 390+00.00 - STA 396+00.00 DASHED  
DURABLE 6" YELLOW LINE, THERMOPLASTIC  
STA 390+00.00 - STA 396+00.00 RT

REMOVING SIGNS  
STA 395+99 LT  
TRAFFIC SIGNS, TYPE A  
STA 395+99 LT

SPECIAL PROVISION  
(BRIDGE RAILING, F-SHAPE CONCRETE)  
STA 390+92.45 - STA 395+95.60 LT  
STA 390+60.65 - STA 395+50.10 RT

ANCHOR FOR STEEL BEAM RAIL  
STA 390+13.00 RT

SPECIAL PROVISION  
(GUARDRAIL APPROACH SECTION  
TO F-SHAPE CONCRETE RAIL)  
STA 390+61.40 - STA 390+92.45 LT  
STA 390+30.30 - STA 390+60.65 RT  
STA 395+95.60 - STA 396+00.00 LT  
STA 395+50.10 - STA 395+80.45 RT



BEGIN APPROACH  
STA 390+00.00  
389+86.50

BEGIN PROJECT  
STA 390+50.00  
390+36.50

BEGIN BRIDGE 40S  
STA 390+96.63  
CONSTRUCTION LIMITS  
PIER #1  
STA 392+46.67

END BRIDGE 40S  
STA 395+46.02  
END PROJECT  
STA 396+00.00

BRG ABUTMENT #1  
STA 391+00.00  
BEGIN APPROACH SLAB #1  
STA 390+71.63

BRG ABUTMENT #2  
STA 395+41.67  
PIER #2  
STA 393+95.00  
END APPROACH SLAB #2  
STA 395+71.02

PI #2 (I-89 SOUTHBOUND)  
STA 390+58.63 BK =  
STA 389+90.01 AHD  
 $\Delta = 44^\circ 37' 30.36''$  LT

CURVE #1 (I-89 SOUTHBOUND) DATA

Degree of Curvature:	3°30'00"
Radius:	1637.02'
Tangent:	671.81'
Length:	1275.00'
External:	132.49'

SCALE 1" = 20' - 0  
20 0 20

LAYOUT #2 (I-89 SOUTHBOUND)

SIGN LEGEND

N	- NEW SIGN & POST
R	- REMOVE EXISTING SIGN AND POST

PROJECT: BERLIN	PROJECT NO. : IM 089-1 (20)
DESIGN FILE NAME: s99a270\structures\s99a270bdr.dgn	PLOT DATE: 05-DEC-2007
IPARM FILE NAME: s99a2701a2 sb.i	DRAWN BY: D.D.BEARD
DESIGNED BY: K.M.HIGGINS	CHECKED BY: R.S.YOUNG
SQUAD LEADER: C.P.WILLIAMS	SHEET: 20 OF 104
LAYOUT SOUTHBOUND 2	