

REMOVAL AND DISPOSAL OF GUARDRAIL
STA 288+34.60 - STA 290+00.00 LT

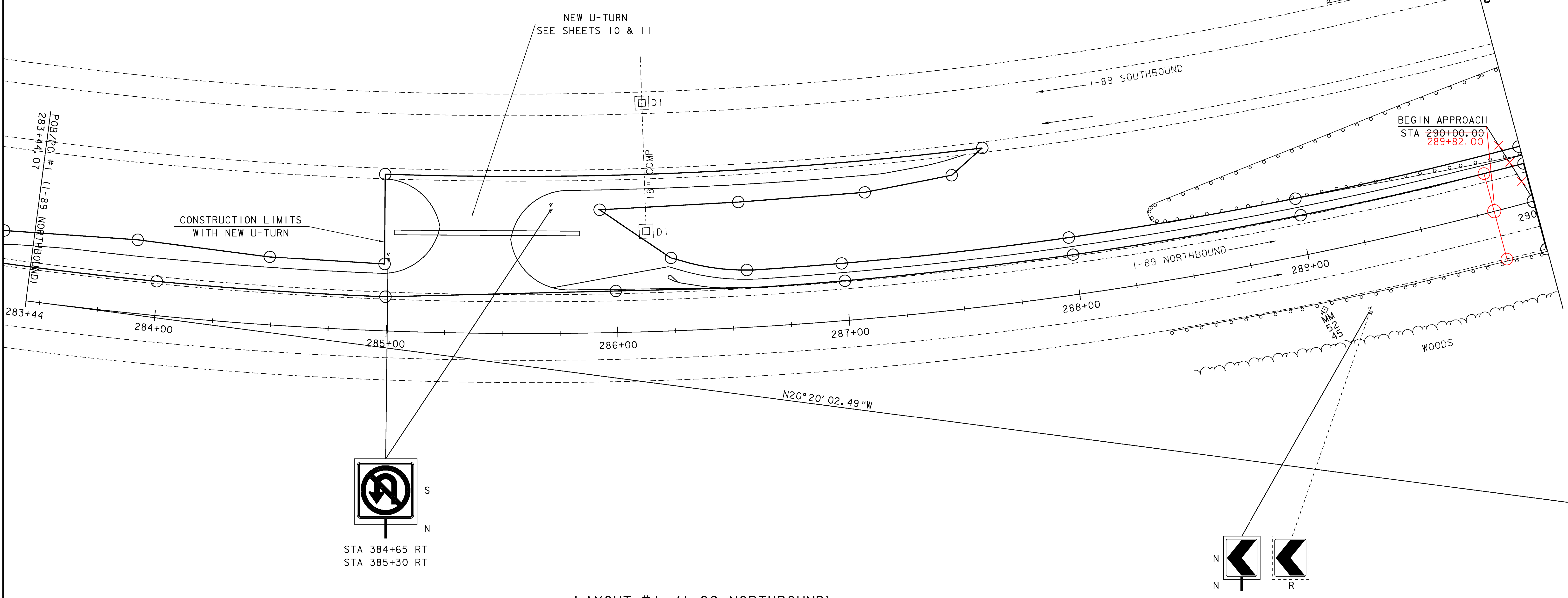
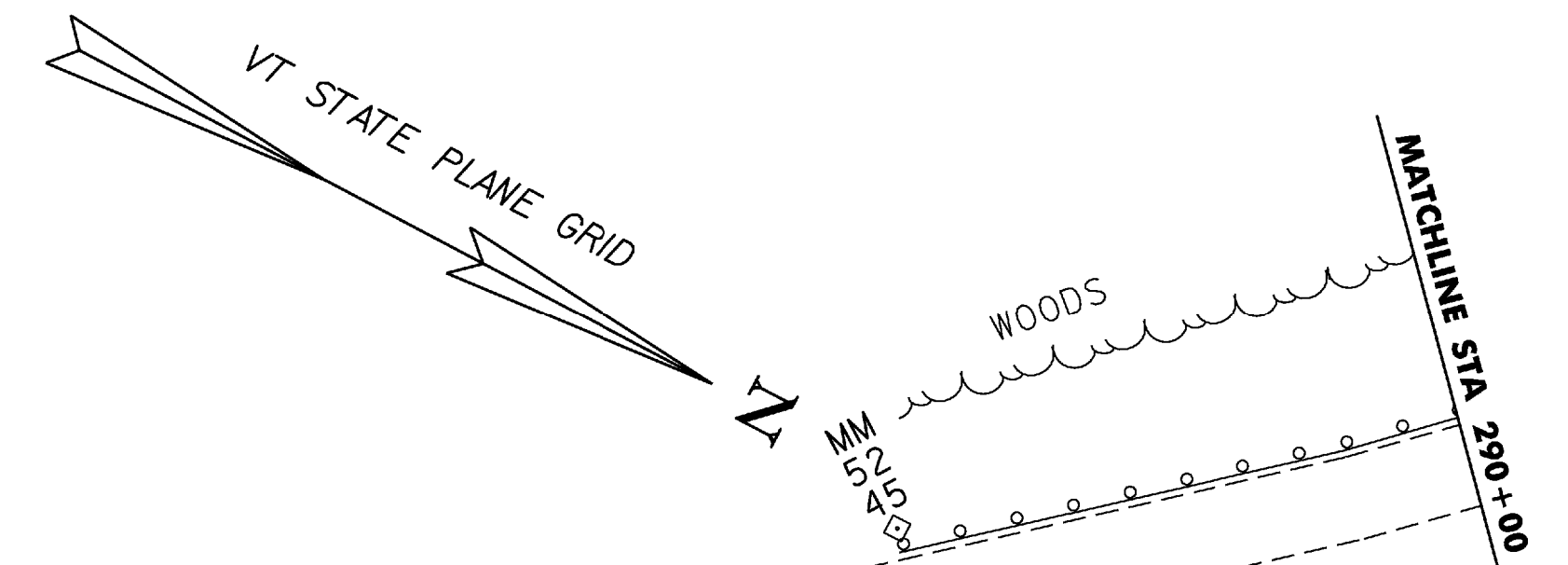
HD STEEL BEAM GUARDRAIL, GALVANIZED
STA 286+60.30 - STA 290+00.00 LT

MANUFACTURED TERMINAL SECTION, FLARED
STA 286+22.50 - STA 286+60.30 LT

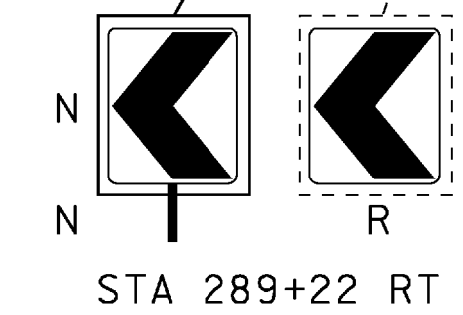
REMOVING SIGNS
STA 289+22 RT

TRAFFIC SIGNS, TYPE A
MM 52.09 RT (NOT SHOWN)
STA 289+22 RT
ERECTING SALVAGED SIGNS
285+00 LT
285+71 LT

18" CPEP (SL) WITH 18" CPEPES
STA 285+01.94 - STA 285+84.04 LT



LAYOUT #1 (I-89 NORTHBOUND)



SCALE 1" = 20'-0"

20 0 20

SIGN LEGEND
N - NEW SIGN & POST
R - REMOVE EXISTING SIGN AND POST

PROJECT: BERLIN	PROJECT NO. : IM 089-1 (20)
DESIGN FILE NAME: 99a270\structures\99a270bdr.dgn	PLOT DATE: 05-DEC-2007
IPARM FILE NAME: s99a270\al nb.i	DESIGNED BY: K.M.HIGGINS
SQUAD LEADER: C.P.WILLIAMS	DRAWN BY: D.D.BEARD
LAYOUT NORTHBOUND 1	CHECKED BY: R.S.YOUNG
	SHEET: 14 OF 104