

GPS CONTROL POINTS

HVCTRL #1

STANDARD DISC STAMPED

JORDAN

** N = 34440.2370
E = 15507.9300
ELEV. = 522.4400

GENERAL LOCATION, BERLIN, VT. TO REACH FROM THE INTERSECTION OF US ROUTE 2 (MEMORIAL DRIVE) AND VT ROUTE 12 (NORTHFIELD STREET) IN MONTPELIER GO SOUTH ALONG VT ROUTE 12 FOR 1.0 MI (1.6 KM) TO THE I-89 BRIDGES OVERHEAD. CONTINUE STRAIGHT AHEAD AND GO SOUTH ALONG VT ROUTE 12 FOR 0.6 MI (1.0 KM) TO THE INTERSECTION OF A GRAVEL DRIVE RIGHT LEADING TO A PUMP STATION AND THE SITE OF THE MARK ON THE RIGHT, NORTH OF THE DRIVE. IT IS ABOUT OPPOSITE THE NORTH SIDE OF THE WHEELS TRANSPORTATION BUILDING ON THE LEFT. THE MARK IS SET 20 CM BELOW GROUND SURFACE IN THE TOP OF A CAST ALUMINUM MONUMENT. IT IS 7.5 M (24.6 FT) WEST OF AND ABOUT 0.4 M (1.3 FT) LOWER THAN THE CENTERLINE OF VT ROUTE 12, 5.8 M (19.0 FT) NORTH OF THE CENTERLINE OF THE GRAVEL DRIVE, 27.5 M (90.2 FT) SOUTH OF POLE NO 60S, 26.5 M (86.9 FT) NORTHEAST OF THE NORTHEAST CORNER OF A SMALL WOOD PUMP STATION BUILDING, AND 0.4 M (1.3 FT) NORTH OF A FIBERGLASS WITNESS POST.

HVCTRL #2

STANDARD DISC STAMPED

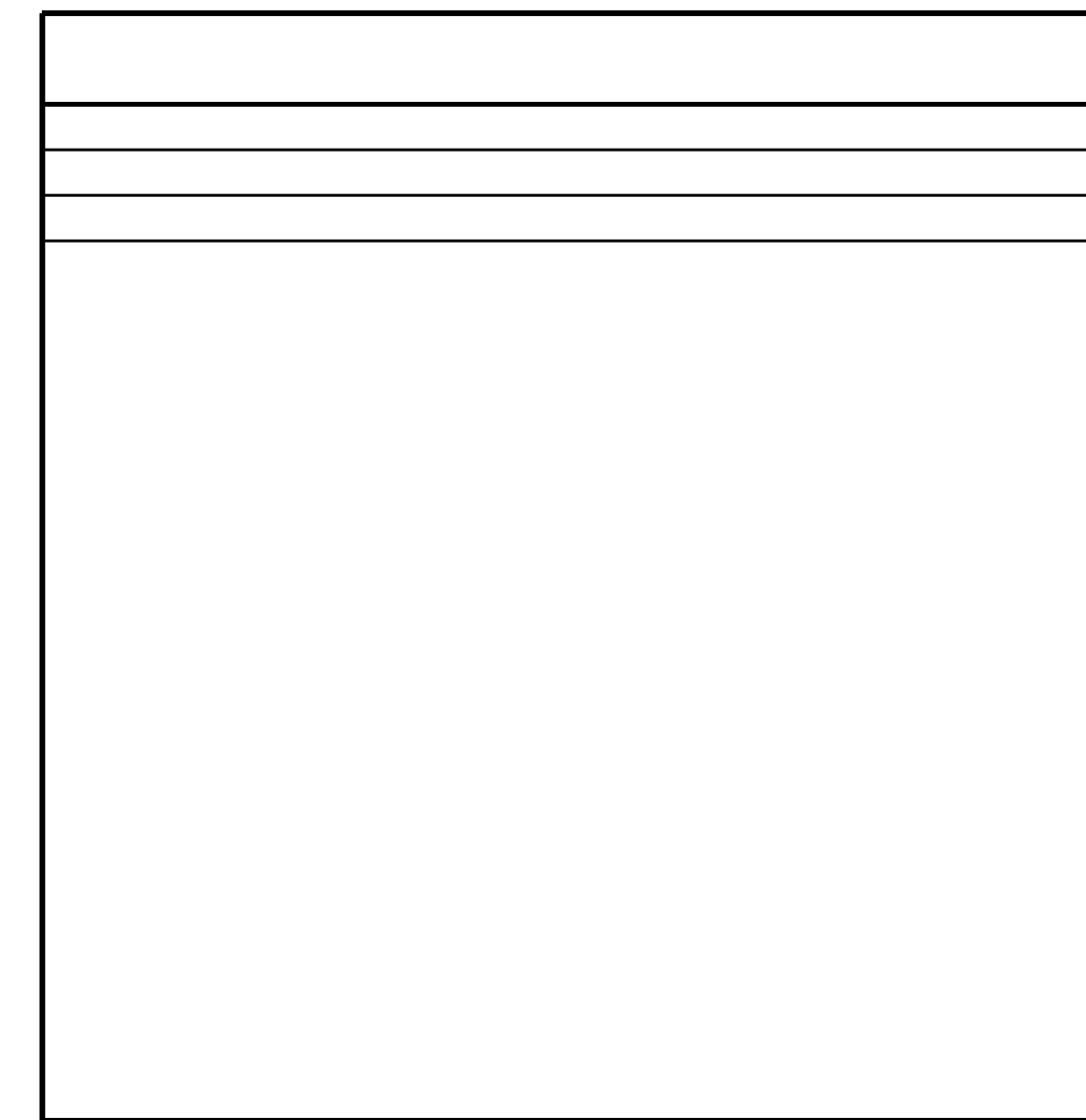
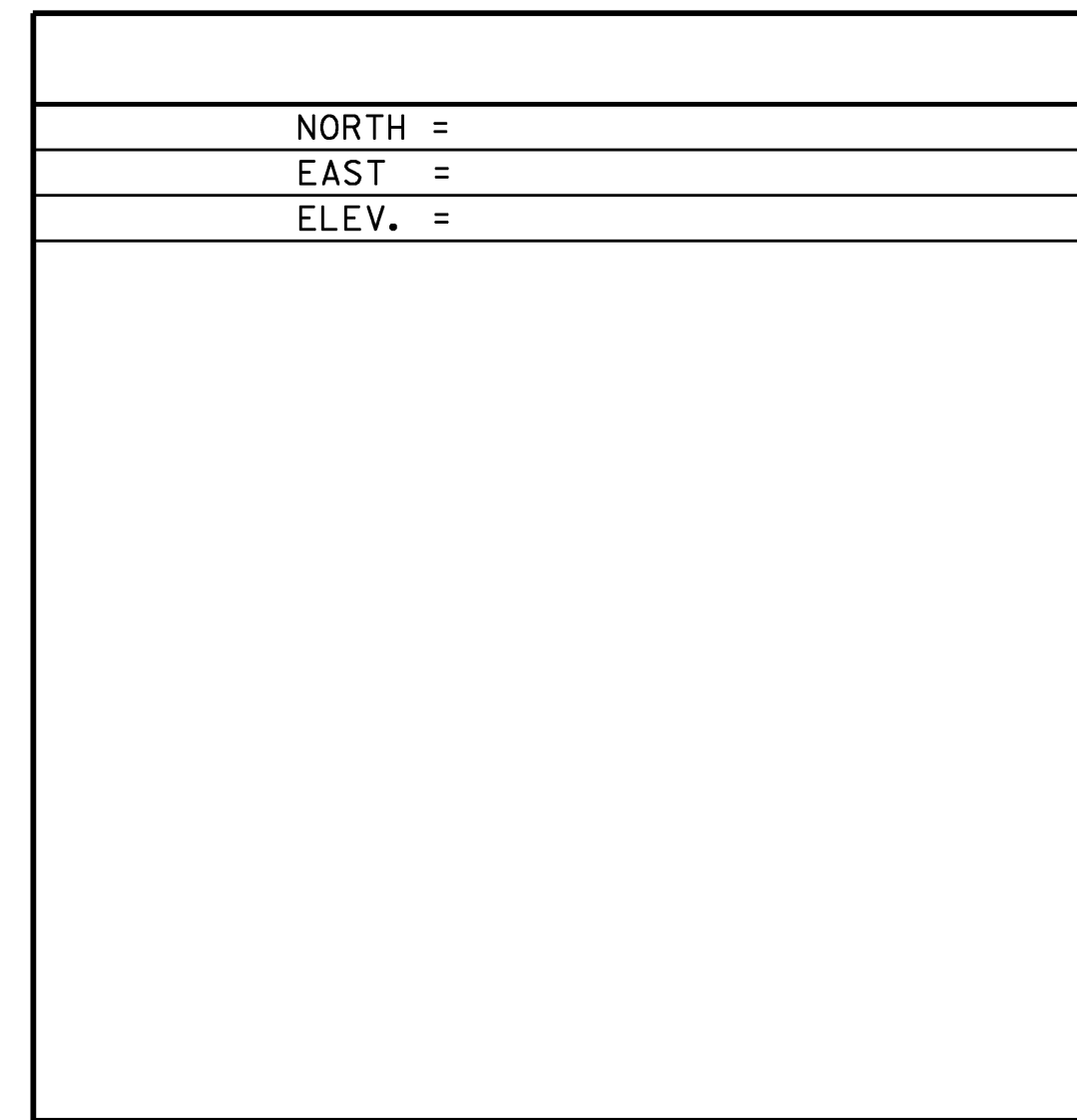
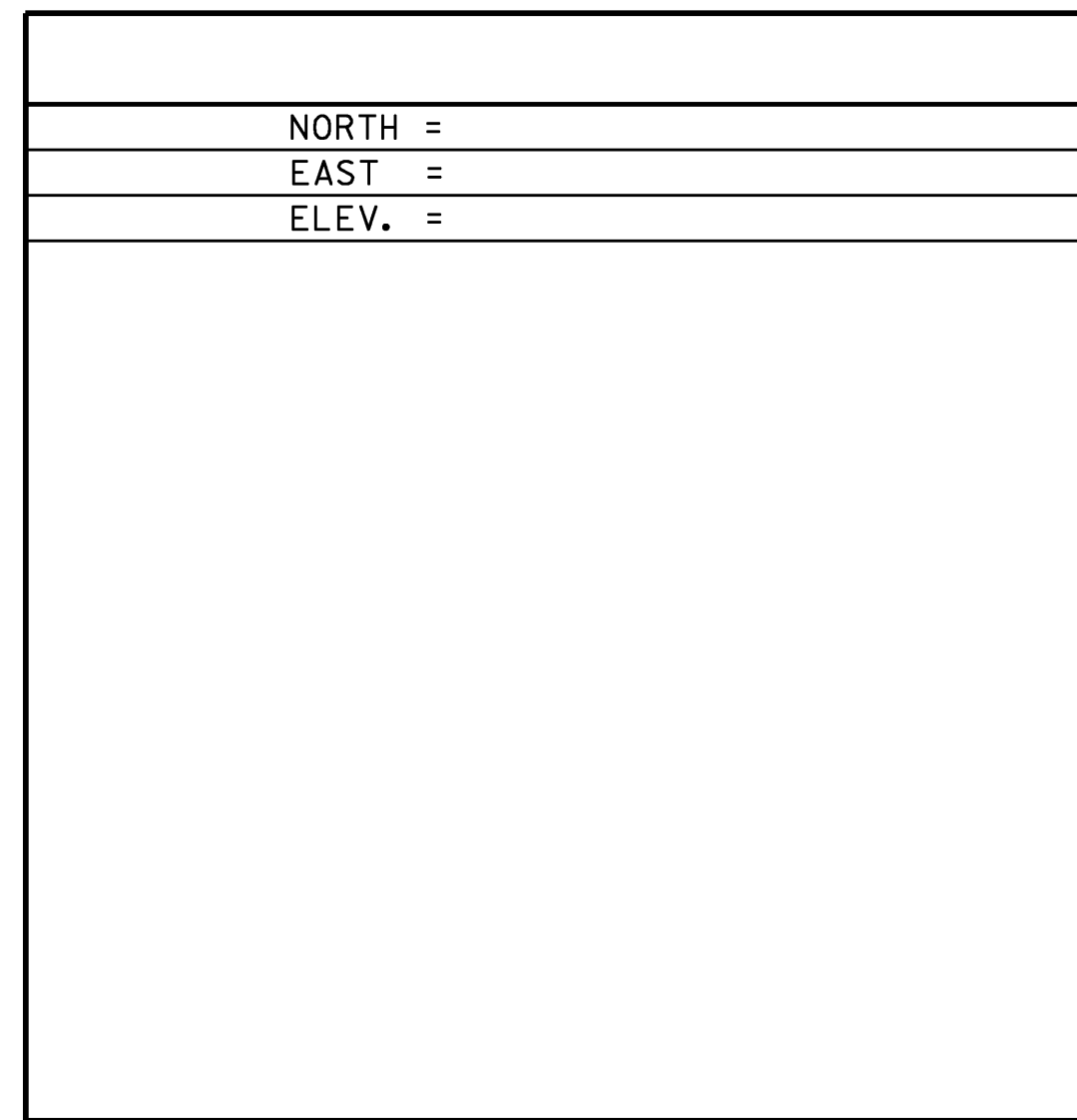
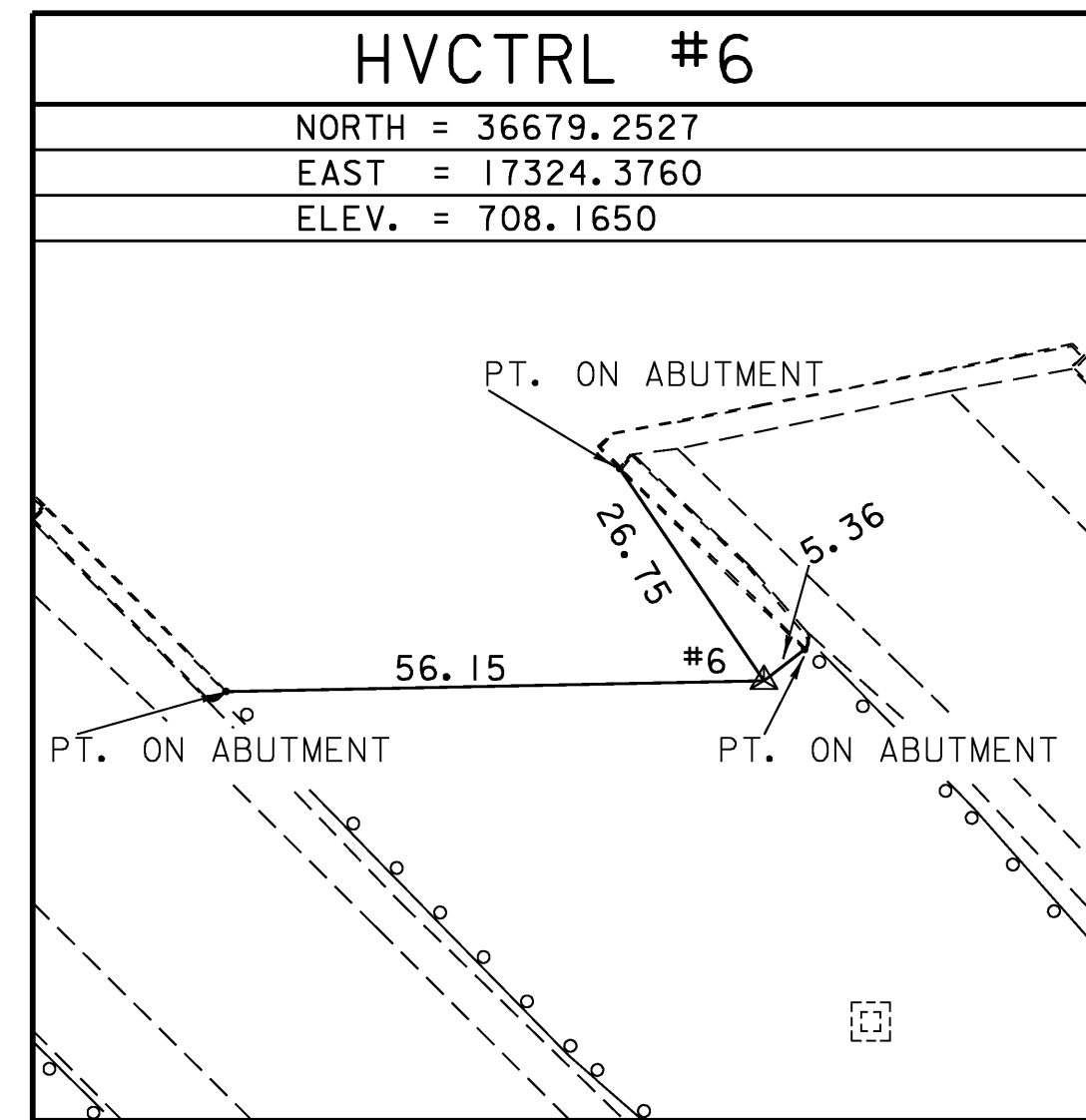
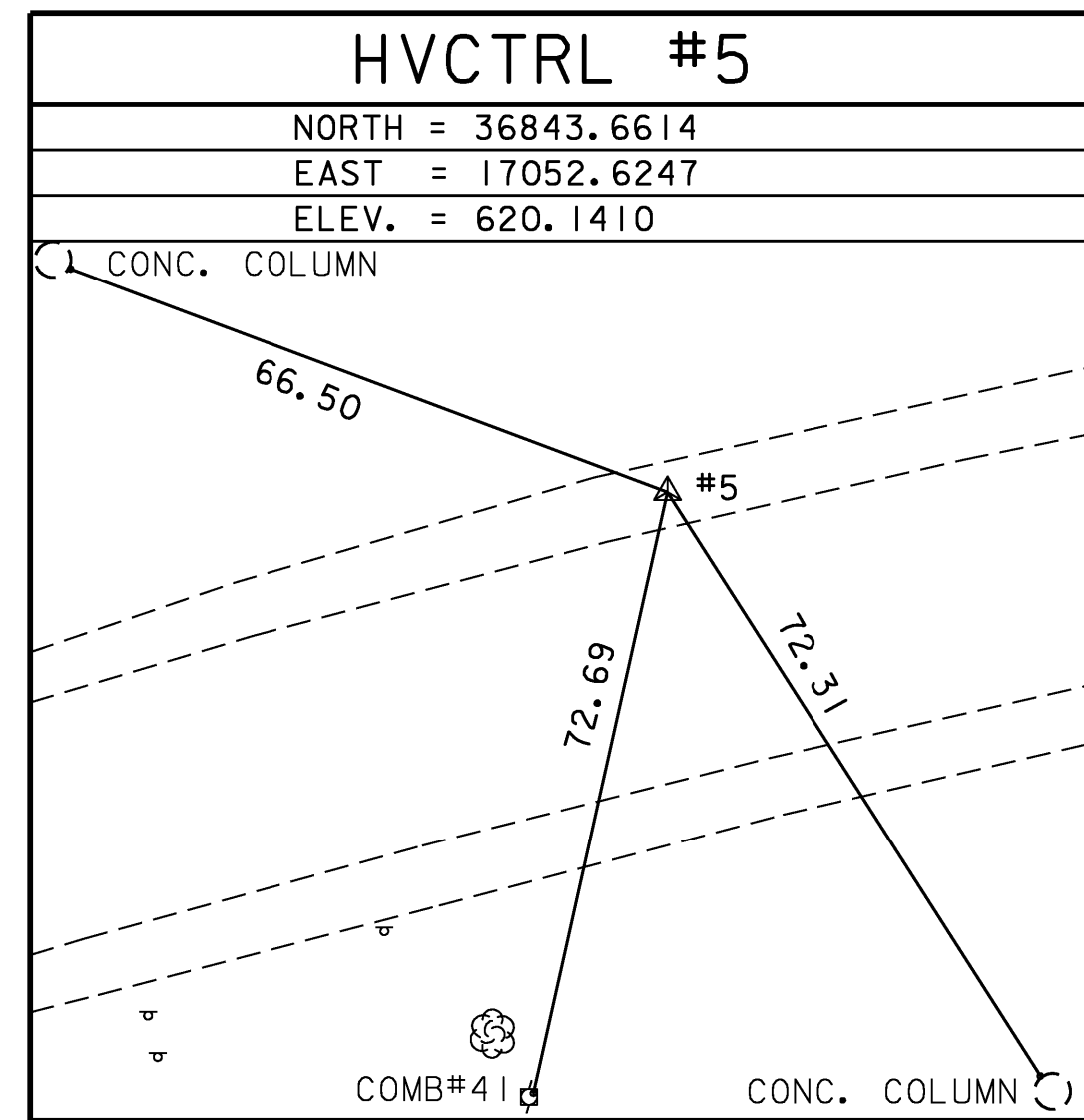
JORDAN AZ

** N = 35850.4340
E = 15655.2000
ELEV. = 527.7500

GENERAL LOCATION, BERLIN, VT. OWNERSHIP, KEN WESTON, 6261 ROUTE 12, BERLIN, VT 05602. TO REACH FROM THE INTERSECTION OF US ROUTE 2 (MEMORIAL DRIVE) AND VT ROUTE 12 (NORTHFIELD STREET) IN MONTPELIER GO SOUTH ALONG VT ROUTE 12 FOR 1.0 MI (1.6 KM) TO THE I-89 BRIDGES OVERHEAD. CONTINUE STRAIGHT AHEAD AND GO SOUTH ALONG VT ROUTE 12 FOR 0.3 MI (0.5 KM) TO THE INTERSECTION OF DOG RIVER ROAD RIGHT. TURN RIGHT AND GO NORTHWEST ALONG DOG RIVER ROAD FOR ABOUT 65 M (213.3 FT) TO THE SITE OF THE MARK ON THE LEFT, UNDER A POWERLINE. THE MARK IS SET IN THE TOP OF THE NORTHWEST END OF A MASSIVE ROCK OUTCROP WHICH PROJECTS ABOUT 1 M (3.3 FT) ABOVE GROUND SURFACE. IT IS 66.1 M (216.9 FT) NORTHWEST OF AND ABOUT LEVEL WITH THE CENTERLINE OF VT ROUTE 12, 68.4 M (224.4 FT) SOUTHWEST OF THE CENTERLINE OF DOG RIVER ROAD, 57.5 M (188.6 FT) SOUTH OF POLE NO 105, 54.2 M (177.8 FT) NORTH NORTHWEST OF POLE NO 368, 1.7 M (5.6 FT) NORTHEAST OF THE SOUTHWEST END OF THE OUTCROP, AND 1.4 M (4.6 FT) NORTHWEST OF A FIBERGLASS WITNESS POST.

** TO ALLOW THE AGENCY DESIGN PLANE COORDINATES TO FIT THE STATE PLANE COORDINATES, ADD 600000 TO THE NORTHING & ADD 1600000 TO THE EASTINGS, TO THE ABOVE AND BELOW VALUES.
* DESCRIPTION PROVIDED BY VERMONT AGENCY OF TRANSPORTATION GEODETIC SURVEY UNIT

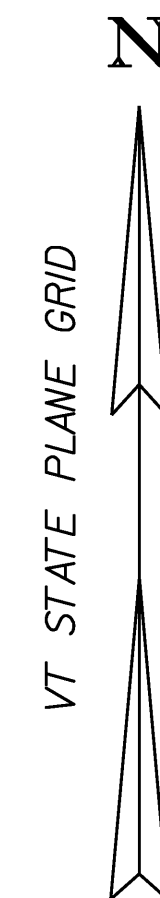
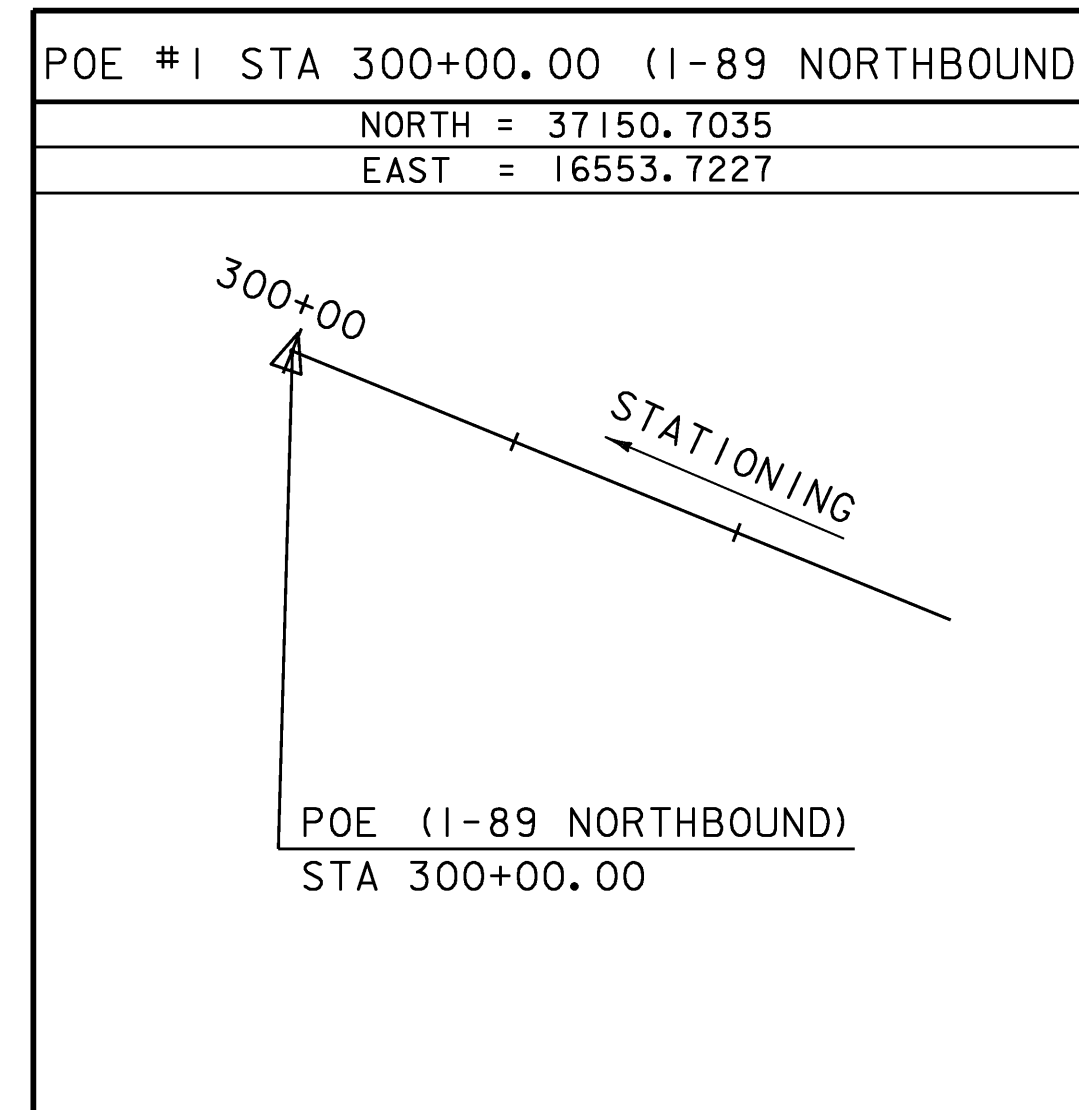
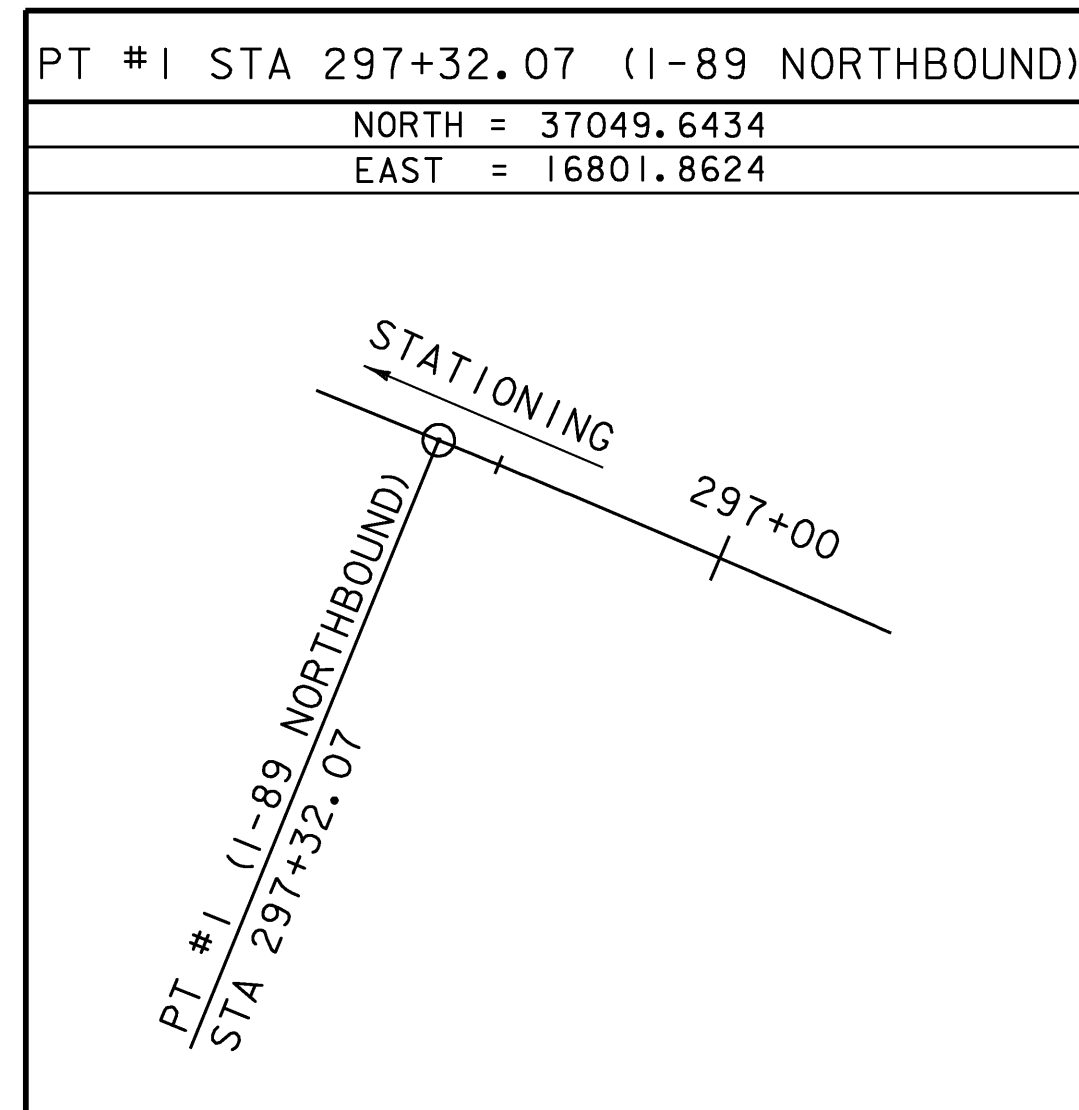
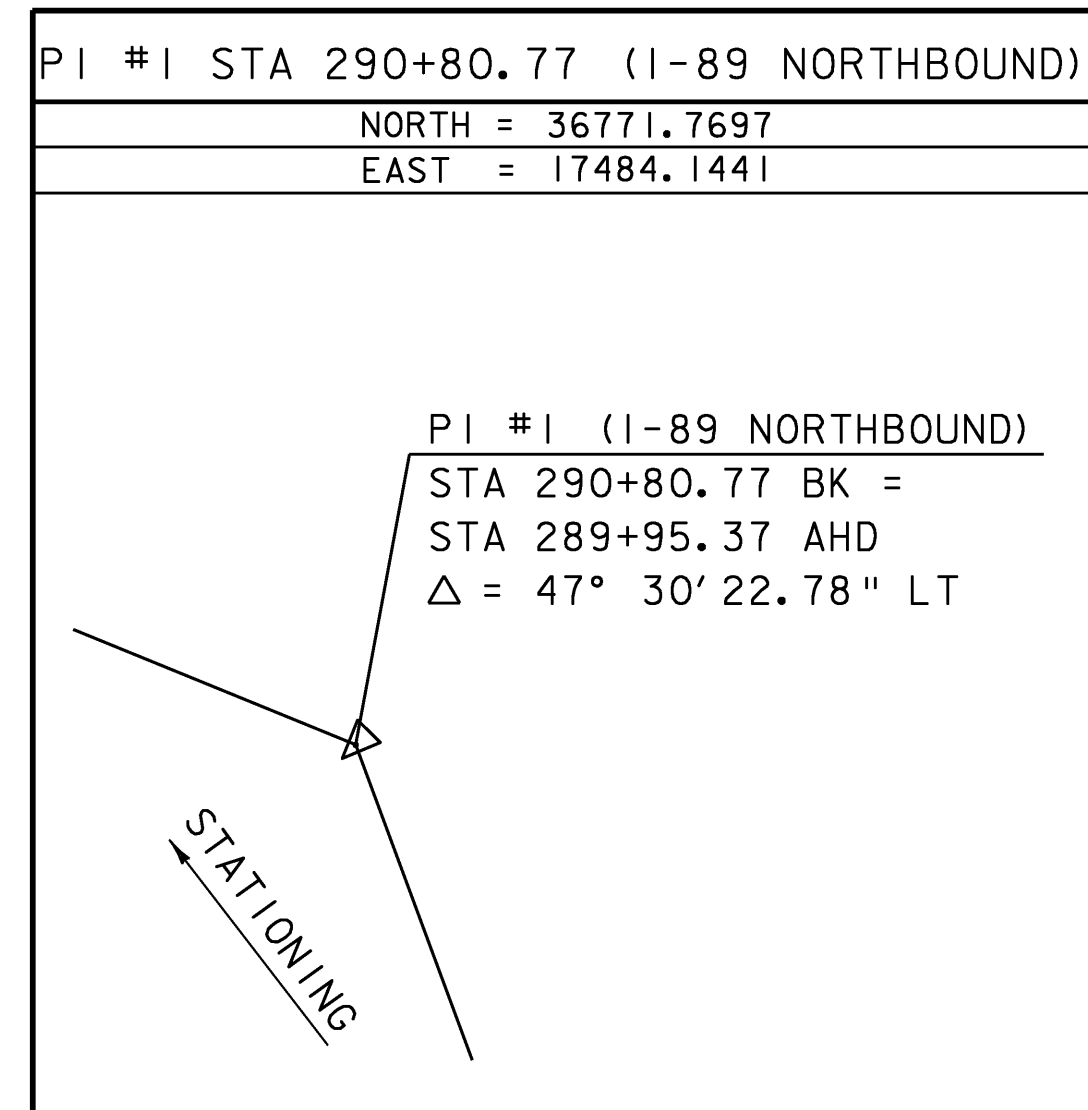
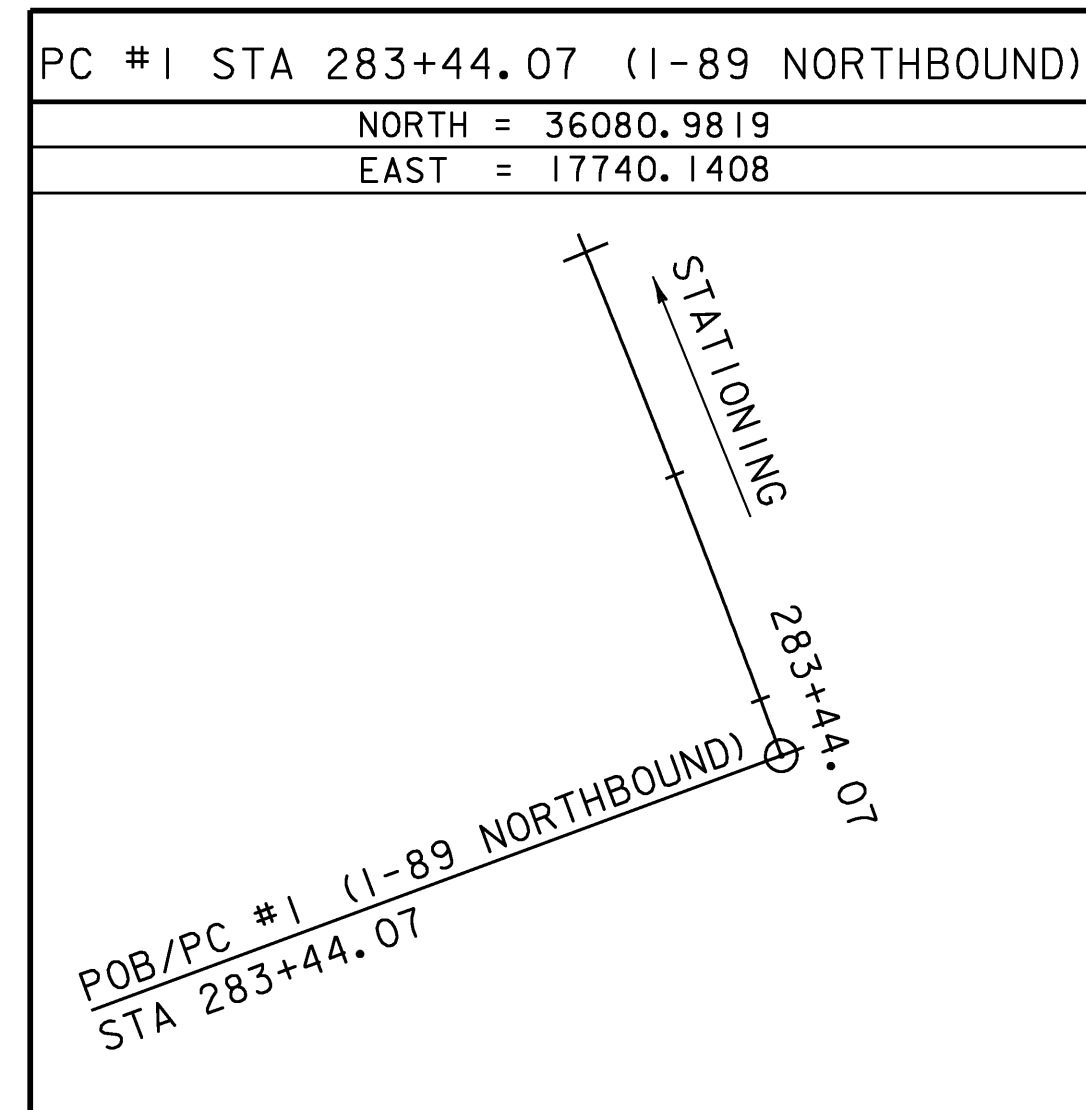
TRAVERSE TIES



* MAIN TRAVERSE COMPLETED: DECEMBER 2, 2001 BY R. GILMAN, P. WINTERS, & D. BREER

ALIGNMENT TIES

I-89 NORTHBOUND



DATUM

VERTICAL NAVD 88
HORIZONTAL NAD-83 (96)
ADJUSTMENT COMPASS

* ALIGNMENT STAKED

PROJECT NAME: BERLIN
PROJECT NUMBER: IM 089-1(20)
FILE NAME: 99a270/xa270+1.dgn PLOT DATE: 05-DEC-2007
PROJECT LEADER: S.FARNSWORTH DRAWN BY: J. HULETT
DESIGNED BY: G.SPILAK CHECKED BY: P.HODGE
SURVEY & NORTHBOUND ALIGNMENT TIES SHEET 12 OF 104