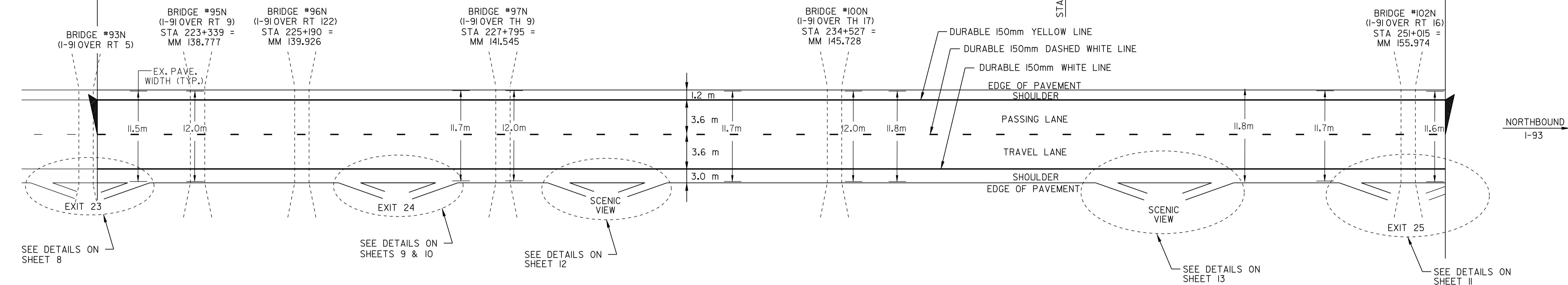


**INTERSTATE ROUTE 91  
NORTHBOUND  
STA 220+719.9  
(MM 137.149)  
BEGIN PROJECT IM 091 - 3(10)**

**INTERSTATE ROUTE 91  
NORTHBOUND  
STA 251+138.1  
(MM 156.050)  
END OF PROJECT IM 091 - 3(10)**



TEMPORARY 150mm WHITE LINE  
 ✓ STA 220+720 TO 251+219 SOLID RT  
 STA 220+720 TO 251+219 DASHED C.L.  
 TEMPORARY 150mm YELLOW LINE  
 ✓ STA 220+720 TO 251+219 SOLID LT

234+935  
 DURABLE 150mm WHITE LINE  
 STA 220+720 TO 221+258 SOLID RT ✓  
 STA 235+757 TO 251+219 SOLID RT ✓  
 STA 220+720 TO 221+258 DASHED C.L. ✓  
 STA 235+757 TO 251+219 DASHED C.L. ✓  
 234+935

STA 220+720 TO 227+978  
 DURABLE 150mm WHITE LINE (MOD. 1)  
 STA 221+258 TO 228+516 SOLID RT ✓  
 STA 221+258 TO 228+516 DASHED C.L. ✓  
 STA 220+720 TO 227+978

STA 227+978 TO 234+935  
 DURABLE 150mm WHITE LINE (MOD. 2)  
 STA 228+516 TO 235+757 SOLID RT ✓  
 STA 228+516 TO 235+757 DASHED C.L. ✓  
 STA 227+978 TO 234+935

DURABLE 150mm YELLOW LINE  
 STA 220+720 TO 221+258 SOLID LT ✓  
 STA 235+757 TO 251+219 SOLID LT ✓  
 234+935

DURABLE 150mm YELLOW LINE (MOD. 1)  
 STA 221+258 TO 228+516 SOLID LT ✓  
 STA 220+720 TO 227+978

DURABLE 150mm YELLOW LINE (MOD. 2)  
 STA 228+516 TO 235+757 SOLID LT ✓  
 STA 227+978 TO 234+935

CHANGING ELEVATION/REHABILITATION OF D.I., C.B., OR M.H.  
 STA 222+697 RT REHAB  
 STA 222+985 RT COVERED  
 STA 223+087 RT COVERED  
 STA 223+425 LT COVERED  
 STA 224+858 RT COVERED  
 STA 224+938 RT COVERED  
 STA 225+036 RT COVERED  
 STA 225+112 RT COVERED  
 STA 225+144 RT COVERED & REHAB  
 STA 225+664 RT REHAB  
 STA 227+288 LT COVERED  
 STA 227+384 LT&RT COVERED  
 STA 227+497 LT&RT COVERED  
 STA 227+577 LT COVERED  
 STA 227+626 LT COVERED  
 STA 227+706 LT COVERED  
 STA 227+779 RT COVERED  
 STA 230+095 RT (SCENIC VIEW) CE  
 STA 231+729 RT COVERED  
 STA 231+826 RT COVERED  
 STA 231+874 RT COVERED  
 STA 231+955 RT COVERED  
 STA 232+019 RT COVERED  
 STA 232+116 RT COVERED  
 STA 232+180 RT COVERED  
 STA 234+506 RT CHANGE ELEV  
 STA 234+552 LT CHANGE ELEV  
 STA 234+564 RT COVERED  
 STA 235+801 LT CHANGE ELEV  
 STA 235+930 LT CHANGE ELEV  
 STA 235+994 LT CHANGE ELEV  
 STA 236+075 LT CHANGE ELEV  
 STA 236+139 LT REHAB  
 STA 236+220 LT REHAB  
 STA 236+284 LT REHAB  
 STA 236+364 LT REHAB  
 STA 236+445 LT CHANGE ELEV  
 STA 236+525 LT REHAB  
 STA 236+606 LT REHAB  
 STA 238+762 RT REHAB  
 STA 238+827 LT&RT CE/REHAB  
 STA 238+907 LT&RT CE/CE  
 STA 238+988 LT&RT CE/REHAB  
 STA 239+052 LT&RT CE/REHAB  
 STA 242+142 LT CHANGE ELEV  
 STA 242+222 LT REHAB  
 STA 242+303 LT REHAB  
 STA 242+383 LT CHANGE ELEV  
 STA 242+448 LT REHAB  
 STA 245+522 LT REHAB  
 STA 245+586 LT CHANGE ELEV  
 STA 245+658 LT CHANGE ELEV  
 STA 250+092 LT REHAB  
 STA 250+156 LT CHANGE ELEV  
 STA 250+239 LT CHANGE ELEV  
 STA 250+980 RT CHANGE ELEV  
 STA 251+051 RT CHANGE ELEV  
 STA 242+541 LT REHAB  
 STA 223+145 RT COVERED  
 STA 236+590 LT COVERED

SHOULDER BERM REMOVAL  
 STA 222+083 TO 222+185 LT  
 STA 222+540 TO 222+620 RT  
 STA 224+568 TO 224+777 RT  
 STA 226+386 TO 226+575 LT  
 STA 227+272 TO 227+561 RT  
 STA 228+221 TO 229+219 LT  
 STA 229+573 TO 229+766 LT  
 STA 230+876 TO 231+359 LT  
 STA 231+247 TO 231+343 RT  
 STA 233+081 TO 233+355 LT  
 STA 233+097 TO 233+371 RT  
 STA 234+835 TO 234+996 RT  
 STA 235+704 TO 235+801 LT  
 STA 236+670 TO 236+928 LT  
 STA 237+217 TO 237+394 LT  
 STA 241+000 TO 241+466 LT  
 STA 241+997 TO 242+081 LT  
 STA 244+202 TO 244+282 LT  
 STA 244+234 TO 244+789 RT  
 STA 245+409 TO 245+489 LT

SNOW BARRIER - GALVANIZED  
 BRIDGE #95N - 33.6m 33.2m  
 BRIDGE #96N - 43.2m 38.6m  
 BRIDGE #97N - 28.8m 17.4m  
 BRIDGE #100N - 43.2m 39.0m  
 BRIDGE #102N - 57.6m 56.7m

SEE FIELD BOOK OR ESTIMATE ITEM DETAIL FOR ACTUAL SHOULDER BERM REMOVAL AREAS

**NOTE**  
 AT THE REQUEST OF DISTRICT #9, ALL THE PAVEMENT WAS REMOVED FROM BRIDGE 102N. A HEAVY COAT OF EMULSIFIED ASPHALT WAS APPLIED TO THE CONCRETE DECK AND THEN PAVED.

NOTE: COVERED PAID AS CHANGE ELEVATION

CORE #	TOWN	ROUTE	DIR	STATION - (MM)	DEPTH (mm)	PCC	SHOULD. CORE	COMMENTS
1	LYNDON	191	NB	220+882 - (137.25)	115	--	R	30mm OGFC, BRITTLE
2	LYNDON	191	NB	221+446 - (137.60)	90	N	L	0.45m FROM EDGE OF PAVE.
3	LYNDON	191	NB	222+250 - (138.10)	115	--	R	25mm OGFC, BRITTLE
4	LYNDON	191	NB	224+101 - (139.25)	100	--	R	20mm OGFC, BRITTLE
5	LYNDON	191	NB	224+101 - (139.25)	135	N	L	0.45m FROM EDGE OF PAVE.
6	LYNDON	191	NB	225+598 - (140.18)	100	--	R	20mm OGFC, BRITTLE
7	LYNDON	191	NB	227+883 - (141.60)	100	N	L	0.45m FROM EDGE OF PAVE.
8	LYNDON	191	NB	228+527 - (142.0)	100	--	R	12mm OGFC, BRITTLE
9	WHEELLOCK	191	NB	230+780 - (143.40)	95	--	R	12mm OGFC
10	WHEELLOCK	191	NB	231+906 - (144.10)	125	N	L	30mm OGFC
11	SHEFFIELD	191	NB	232+550 - (144.50)	100	--	R	12mm OGFC
12	SHEFFIELD	191	NB	236+010 - (146.65)	115	--	R	30mm OGFC
13	SHEFFIELD	191	NB	236+976 - (147.25)	115	N	L	25mm OGFC, 0.45m FROM EDGE OF PAVE.
14	SHEFFIELD	191	NB	239+229 - (148.65)	100	--	R	20mm OGFC
15	SHEFFIELD	191	NB	240+677 - (149.55)	120	N	L	20mm OGFC, 0.45m FROM EDGE OF PAVE.
16	SHEFFIELD	191	NB	241+402 - (150.0)	100	--	R	20mm OGFC
17	SHEFFIELD	191	NB	243+010 - (151.0)	90	--	R	--
18	SHEFFIELD	191	NB	244+620 - (152.0)	95	--	R	--
19	GLOVER	191	NB	246+230 - (153.0)	110	--	R	--
20	GLOVER	191	NB	247+840 - (154.0)	110	--	R	--
21	BARTON	191	NB	249+450 - (155.0)	90	--	R	--
22	BARTON	191	NB	250+415 - (155.6)	115	--	R	--

**ARCHIVED  
IN DPR**

**PAVING  
PROJECT  
LAYOUT  
(NORTHBOUND)**

DESIGNED BY BCE/PJM DATE 9-00  
 DRAWN BY C.E.A., INC. DATE 9-00  
 DESIGN FILE NO. /pave/99a204/pa204.dgn  
 PRF FILE pa204i01 DATE 03-APR-2008 15:03  
 PROJ. NAME **LYNDON - BARTON**  
 PROJ. NO. **IM 091 - 3(10)**  
 SHEET **7** OF **17** SHEETS



- ALL SOLID CORES  
 - NONE OVER ASPHALTED