

GPS CONTROL POINTS

HVCTRL #1

THET AZ MK

NORTH = 488643.734
 EAST = 1720093.915
 ELEV. = 540.309

General location, Thetford, VT. To reach from the intersection of VT route 113 west and US route 5 in East Thetford, go north along route 5 for 1.8 mi to the intersection of Latham Road left. Turn left and go southwest along Latham Road for 0.1 mi to the intersection of SchoolHouse Hill Road right. Turn right and go northwest along SchoolHouse Hill Road for 0.2 mi to the intersection of Clay Road right. Continue straight ahead and go northwest along SchoolHouse Hill Road 0.1 mi to the site of the mark on the left. The mark is set 4" below ground surface in the top of a 12" diameter concrete monument. It is 19' south southwest of and about 2' lower than the centerline of School House Hill Road, 30.5' west northwest of a 10" apple, 140' east southeast of a 40" pine, 90' southeast of the center of a gate, and 1' south southwest of a fiberglass witness post.

HVCTRL #2

THET

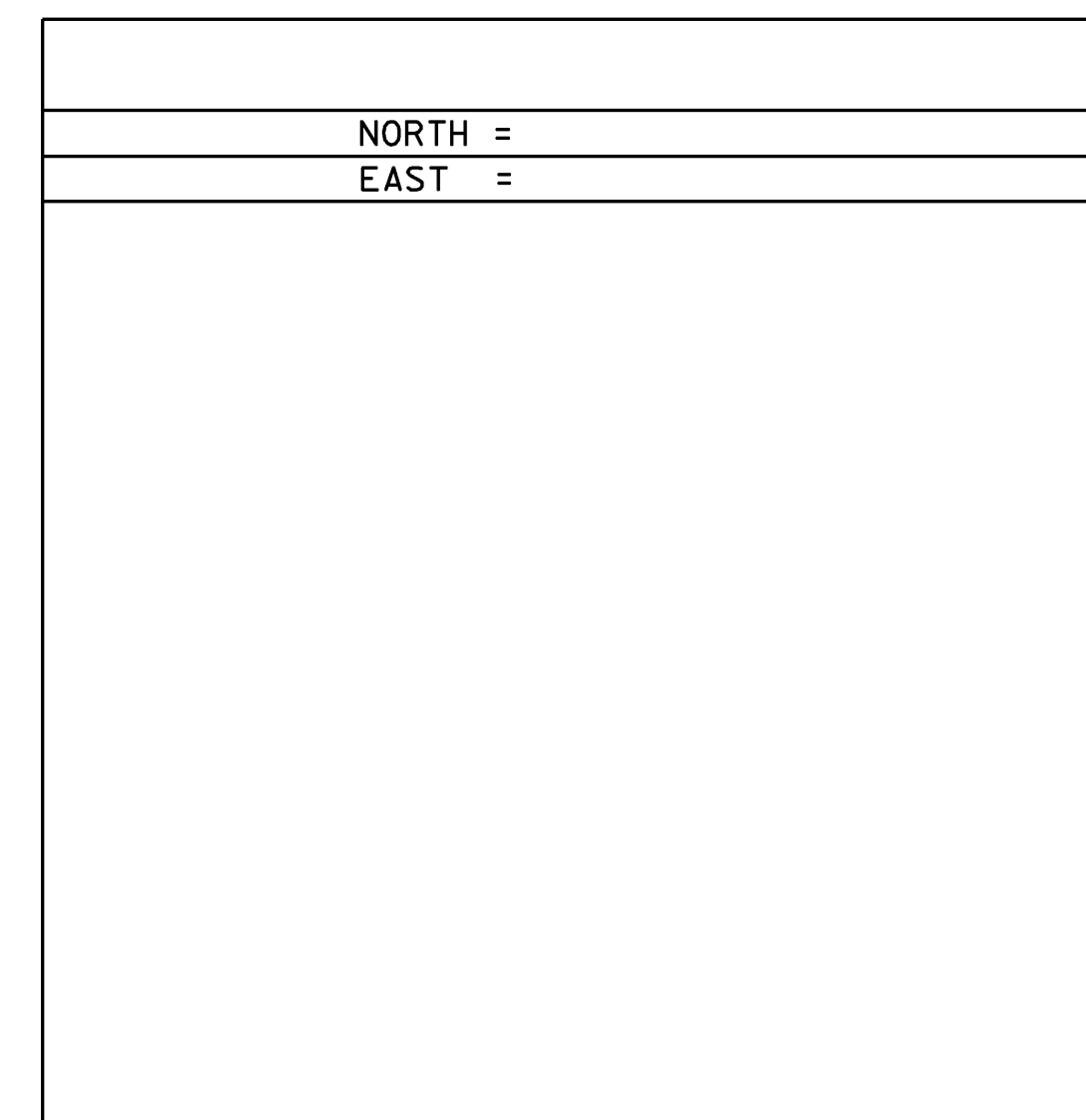
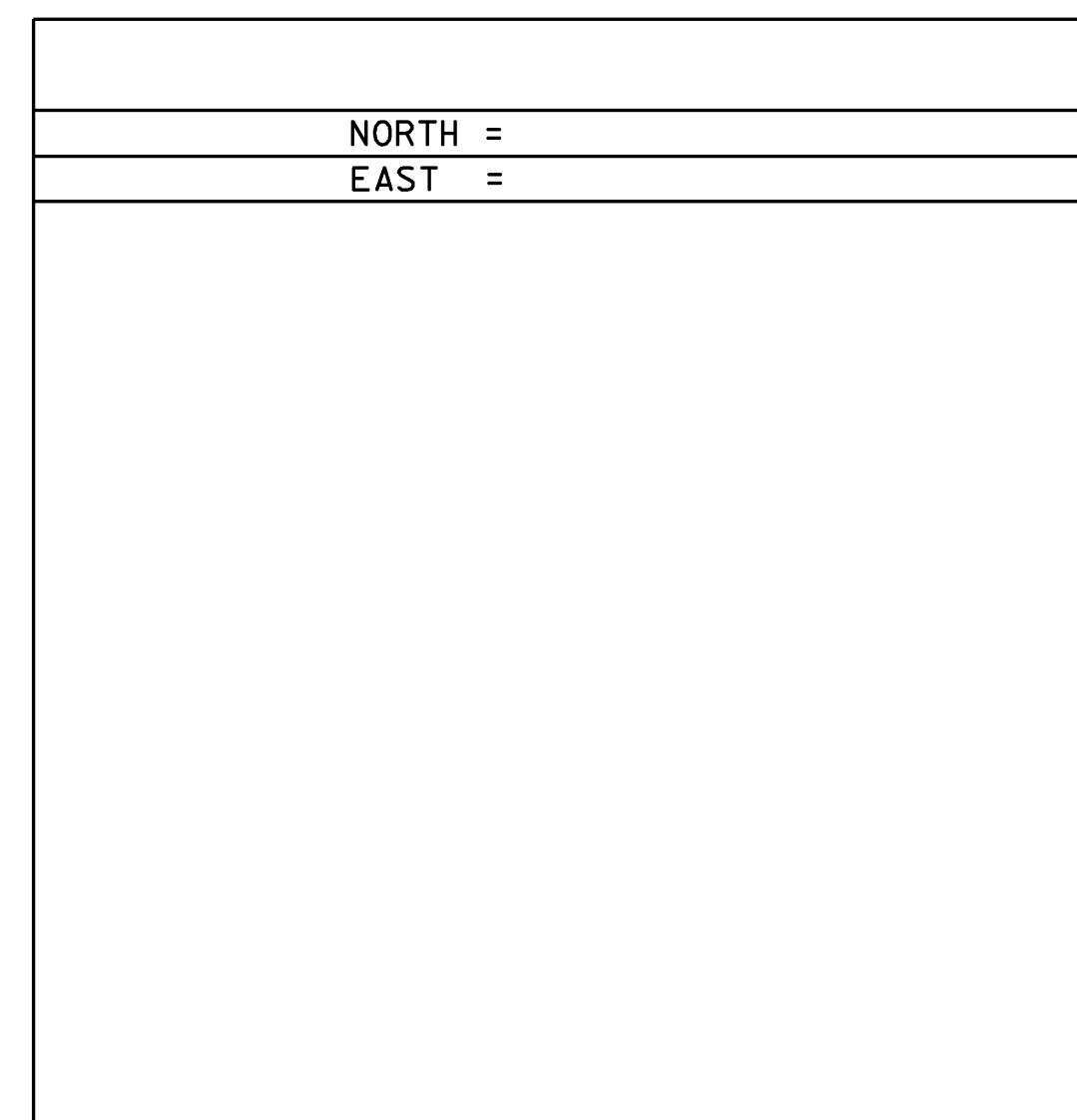
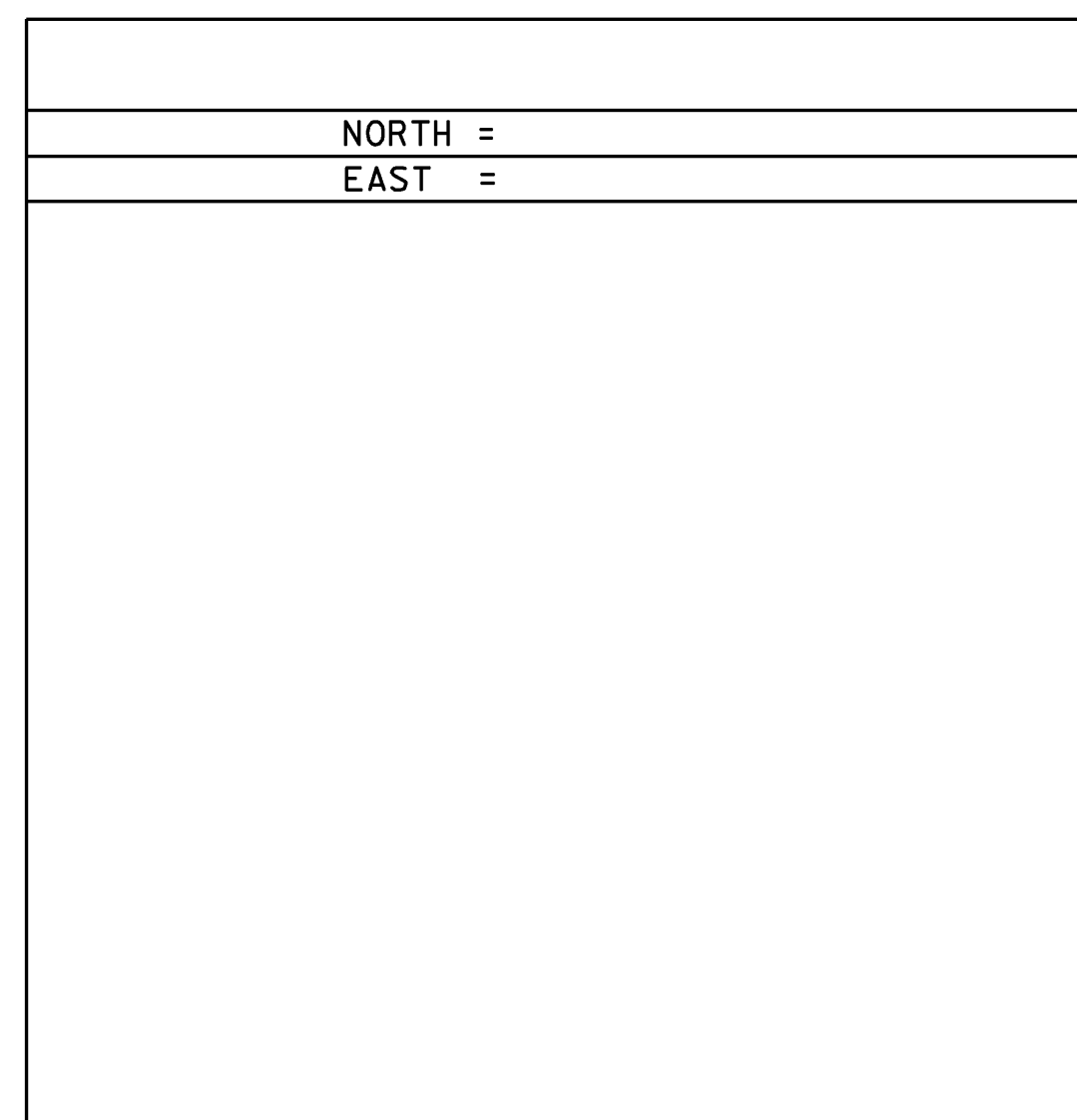
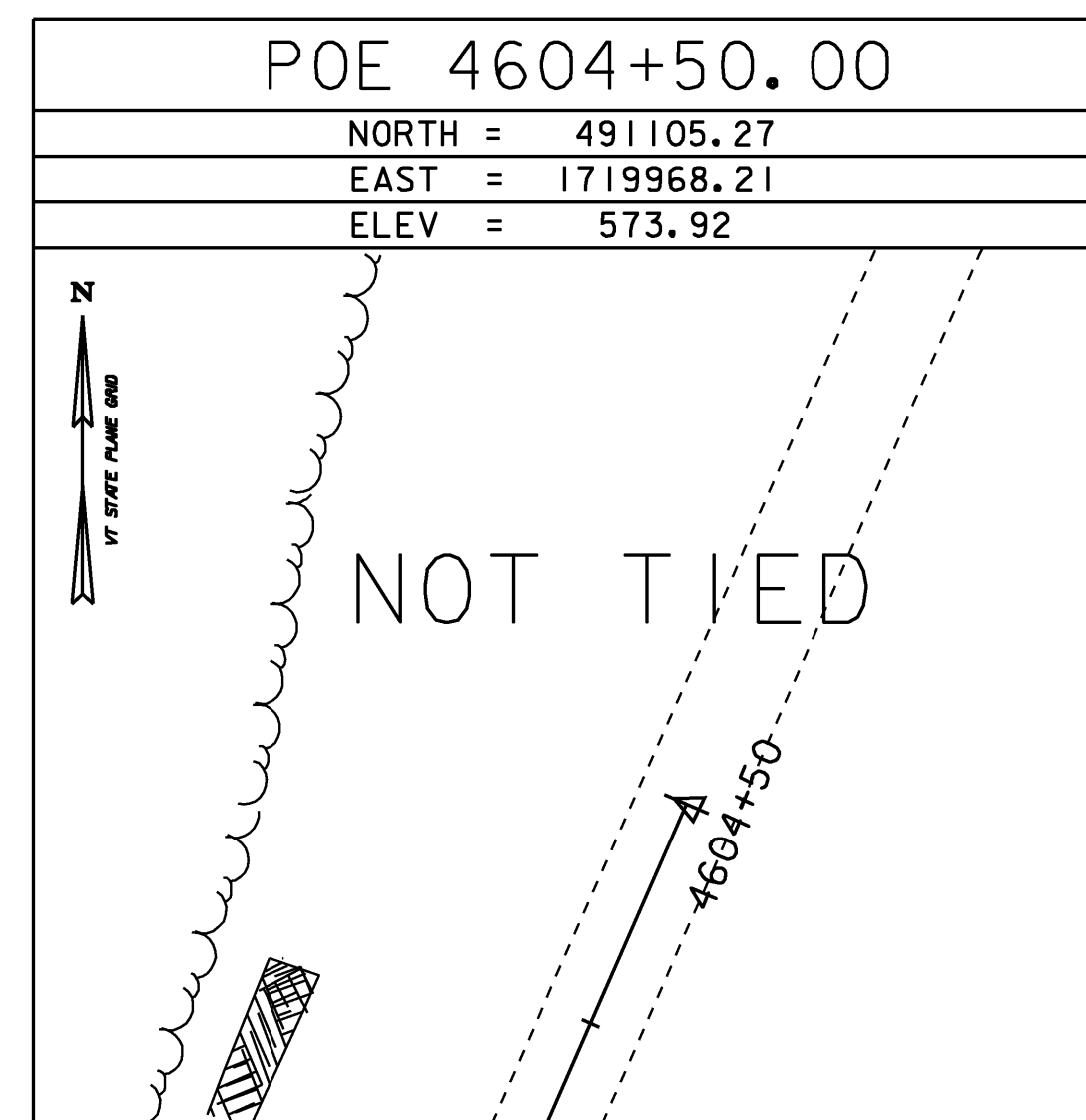
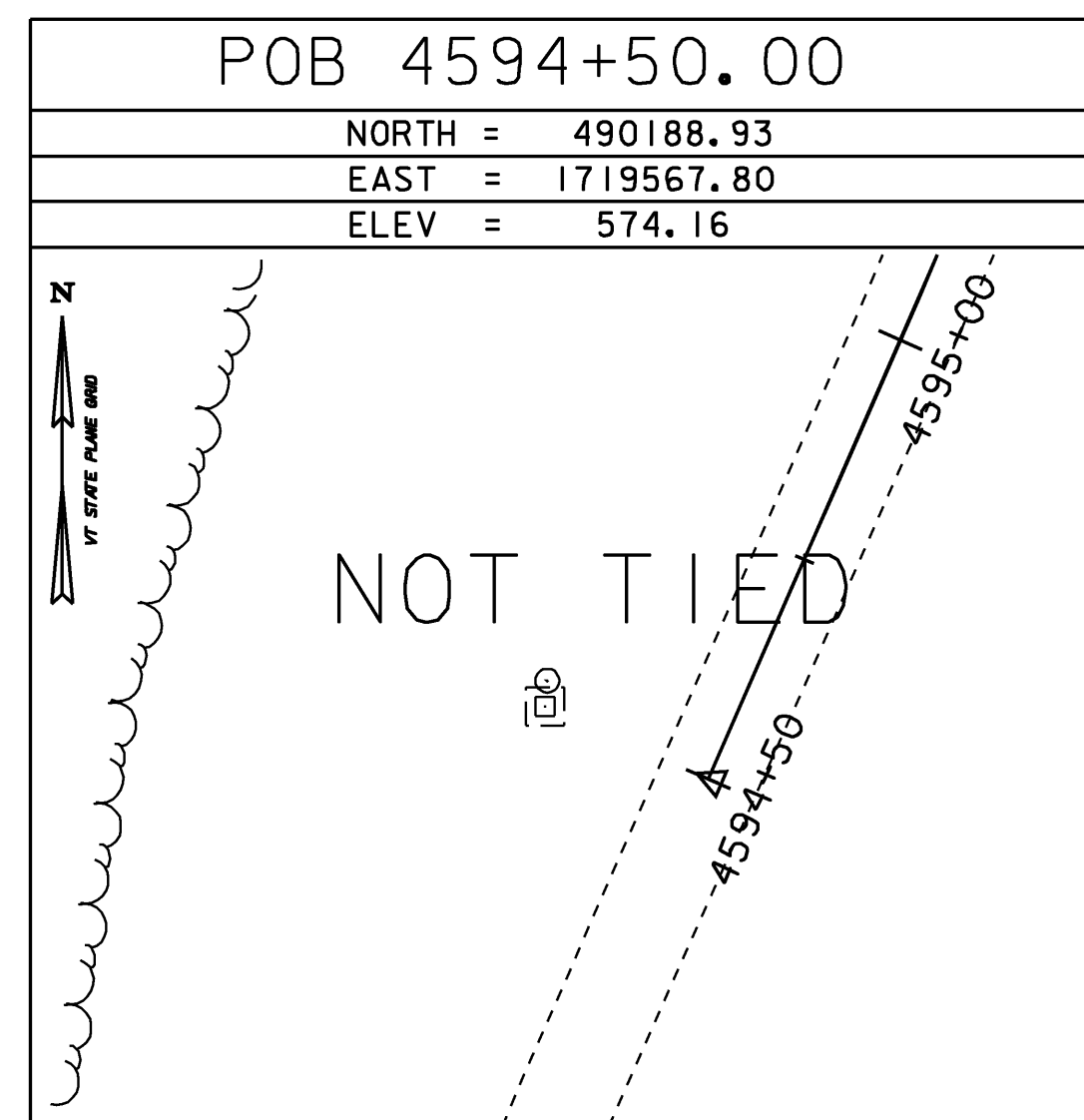
NORTH = 490202.789
 EAST = 1719655.856
 ELEV. = 575.8230

General location, Thetford VT. To reach from the VT route 113 bridge over I-91 northbound at exit 14 go north along I-91 for 2.4 mi to mile marker 86.60 and the site of the mark on the left in the median. The mark is set flush with the ground surface in the top of a 12" diameter concrete monument. It is about 49' northeast of the centerline of a large drainage ditch in the median. It is 42' southeast of and about 3' higher than the I-91 southbound edge of pavement, 96' northwest of the I-91 northbound northwest edge of pavement, 49' east northeast of the center of the southeast (outlet) end of a 24" diameter concrete pipe, 61' north of the center of the northwest (inlet) end of a 24" diameter metal pipe with a concrete headwall, 61' west of 10" apple.

* The above control points are in the project area vicinity MM 86.6 [file 99a052b]

GPS CONTROL POINTS

ALIGNMENT TIES



TIE SHEET

DATUM	
VERTICAL	NAVD 88
HORIZONTAL	NAD 83(Conus)
ADJUSTMENT	none

PROJECT NAME:	HARTFORD - NEWBURY	
PROJECT NUMBER:	IM 091-2(72)	
FILE NAME:	d99a052_frm.dgn	PLOT DATE: 21-JUL-2009
PROJECT LEADER:	K. UPMAL	DRAWN BY: R. Bullock
DESIGNED BY:		CHECKED BY:
IPARM FILE NAME:	d99a052_tie	SHEET 3 OF 45