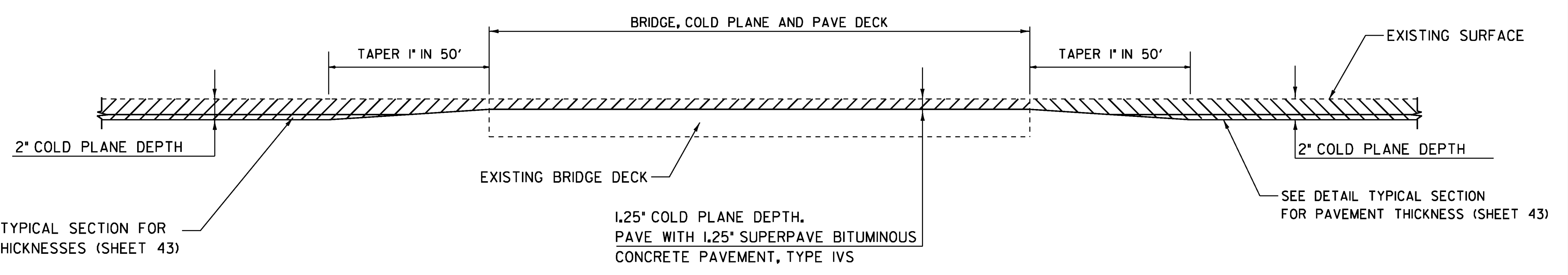


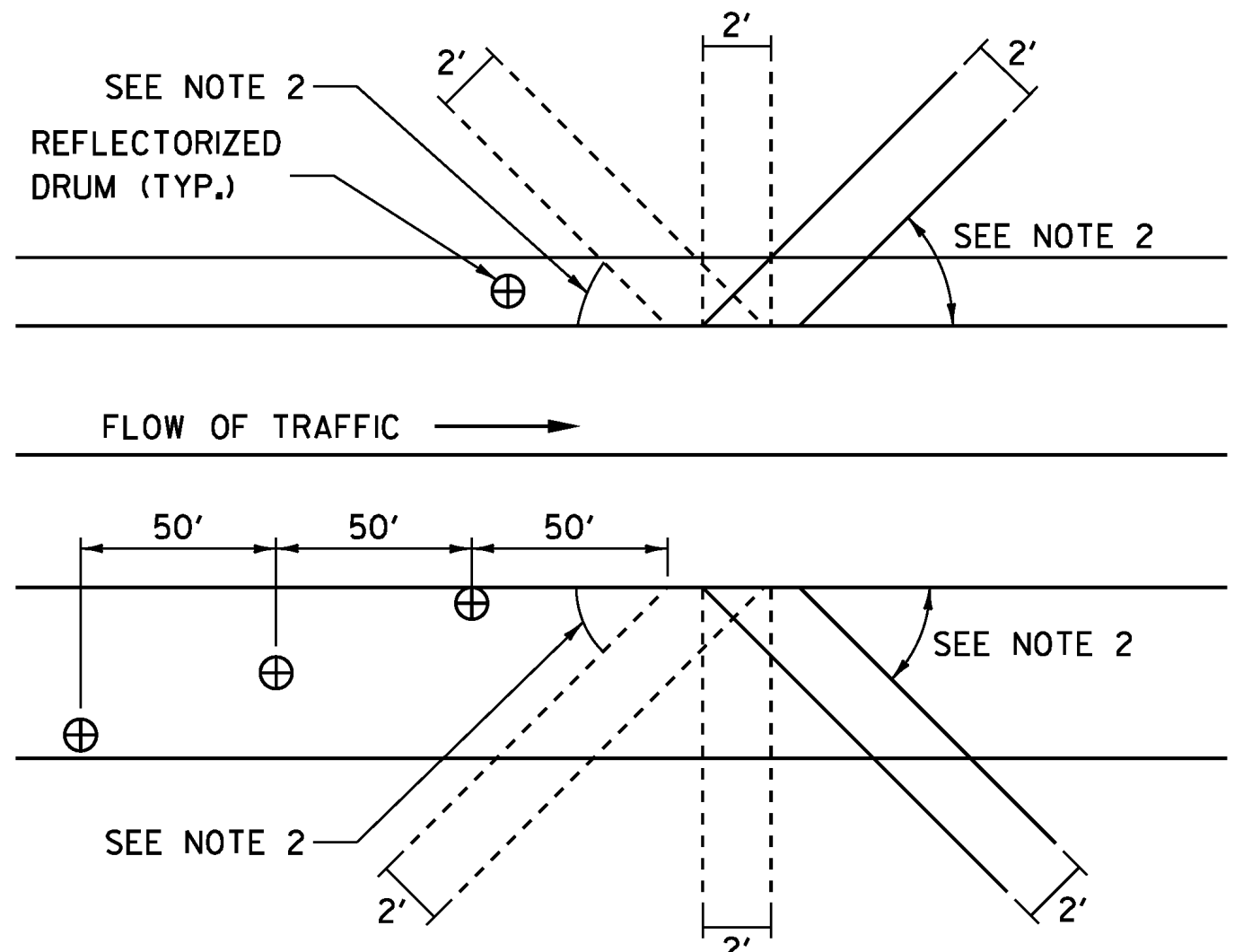
**TYPICAL APPROACH AREA DETAIL**

LOCATION  
 MM. 12.245 - BEGINNING OF PROJECT (NB AND SB)  
 MM. 17.505 - END OF PROJECT (NB AND SB)  
 STA. 0+45.75 - EXIT 2 RAMP A  
 STA. 20+57.73 - EXIT 2 RAMP B  
 STA. 40+00.00 - EXIT 2 RAMP C  
 STA. 61+11.18 - EXIT 2 RAMP D



**BRIDGE COLD PLANE DETAIL**

BRIDGE # 15N LOCATION MM 13.414	BRIDGE #17N LOCATION MM 14.462
BRIDGE #15S LOCATION MM 13.425	BRIDGE #17S LOCATION MM 14.453
BRIDGE #16N LOCATION MM 13.909	BRIDGE #18N LOCATION MM 14.671
BRIDGE #16S LOCATION MM 13.899	BRIDGE #18S LOCATION MM 14.649



**BLEEDER DETAIL**

**BLEEDER DETAIL NOTES:**

1. BLEEDERS ARE TO BE CUT WHILE COLD PLANING, AT LOCATIONS SPECIFIED BY THE RESIDENT ENGINEER.
2. ANGLE BLEEDERS TO BEST ACCEPT WATER FLOW.
3. CUT ALL BLEEDERS TO THE DEPTH OF COLD PLANING AND GRADE TO DRAIN. PAYMENT INCIDENTAL TO ITEM 210.10.
4. BLEEDERS ARE TO BE FILLED DURING PAVING WITH ITEM 490.30, OR AS DESIGNATED BY THE RESIDENT ENGINEER.
5. REFLECTORIZED DRUMS MUST BE PLACED AS SHOWN TO WARN MOTORISTS OF THE GAP IN THE SHOULDER.
6. BLEEDERS ARE NOT REQUIRED IF THE COLD PLANED AREAS ARE PAVED BACK THE SAME DAY.

**NOT TO SCALE**

<b>BRIDGE LOCATION AND DETAIL SHEET 1</b>	PROJECT NAME: SHARON - ROYALTON	
	PROJECT NUMBER: IM 089-1(58)	
	FILE NAME: 97A184.dgn	PLOT DATE: 8/6/2010
PROJECT LEADER: CDL	DRAWN BY: SJL	
DESIGNED BY: SJL	CHECKED BY: EPD	
PLOT FILE: 97A184_44.t	SHEET 44 OF 62	