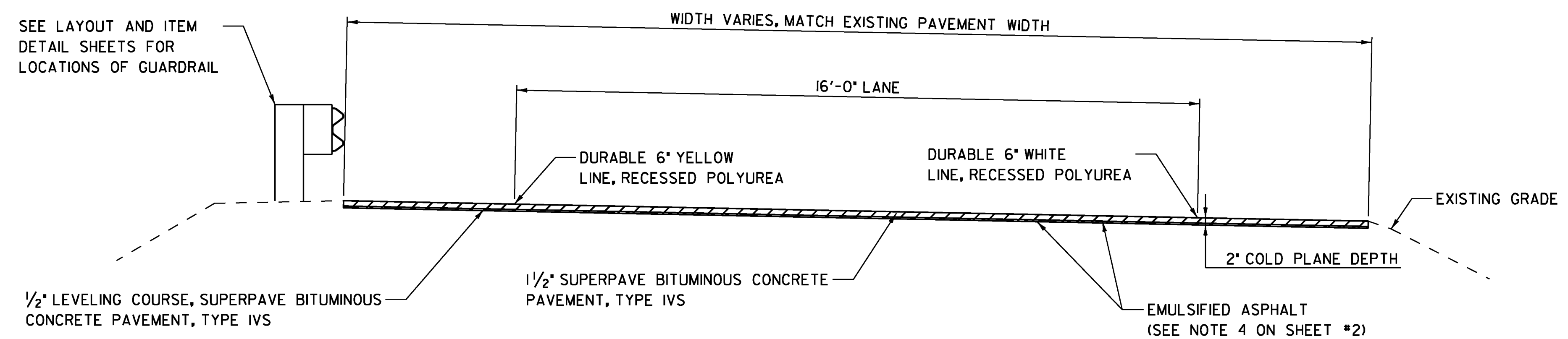
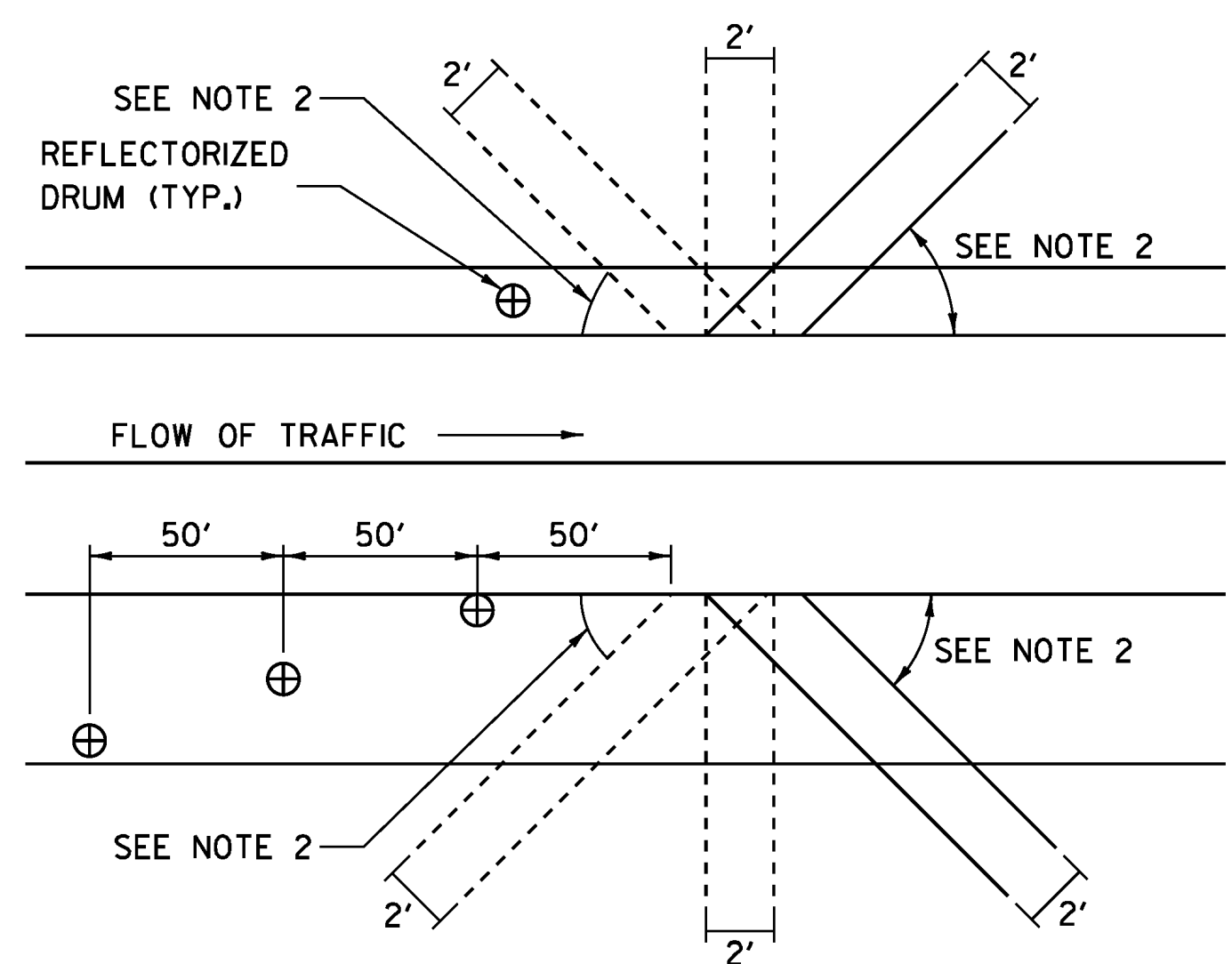


**MAINLINE TYPICAL SECTION**

MM 0.050 - MM 12.245



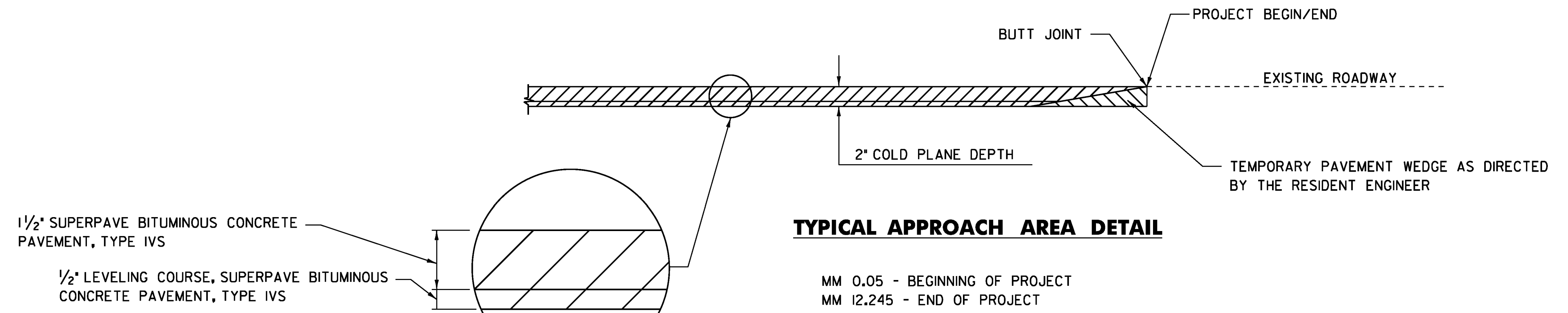
**RAMP TYPICAL SECTION**



**BLEEDER DETAIL**

**BLEEDER DETAIL NOTES:**

1. BLEEDERS ARE TO BE CUT WHILE COLD PLANING, AT LOCATIONS SPECIFIED BY THE RESIDENT ENGINEER.
2. ANGLE BLEEDERS TO BEST ACCEPT WATER FLOW.
3. CUT ALL BLEEDERS TO THE DEPTH OF COLD PLANING AND GRADE TO DRAIN. PAYMENT INCIDENTAL TO ITEM 210.10.
4. BLEEDERS ARE TO BE FILLED DURING PAVING WITH ITEM 490.30, OR AS DESIGNATED BY THE RESIDENT ENGINEER.
5. REFLECTORIZED DRUMS MUST BE PLACED AS SHOWN TO WARN MOTORISTS OF THE GAP IN THE SHOULDER.
6. BLEEDERS ARE NOT REQUIRED IF THE COLD PLANED AREAS ARE PAVED BACK THE SAME DAY.



**TYPICAL APPROACH AREA DETAIL**

MM 0.05 - BEGINNING OF PROJECT  
 MM 12.245 - END OF PROJECT  
 STA. 115+44 - EXIT 1 RAMP D  
 STA. 206+42- EXIT 1 RAMP C  
 STA. 308+50 189/191 RAMP C  
 STA. 514+85 189/191 RAMP F  
 STA. 625+60 189/191 RAMP D

**DETAILS ARE NOT TO SCALE**

<b>PROJECT TYPICAL SHEET</b>	PROJECT NAME: HARTFORD - SHARON	
	PROJECT NUMBER: IM 089-(157)	
	FILE NAME: 97A184.dgn	PLOT DATE: 8/6/2010
	PROJECT LEADER: CDL	DRAWN BY: JDM
	DESIGNED BY: JDM	CHECKED BY: EPD
	PLOT FILE: 97A184.plt	SHEET II OF 62