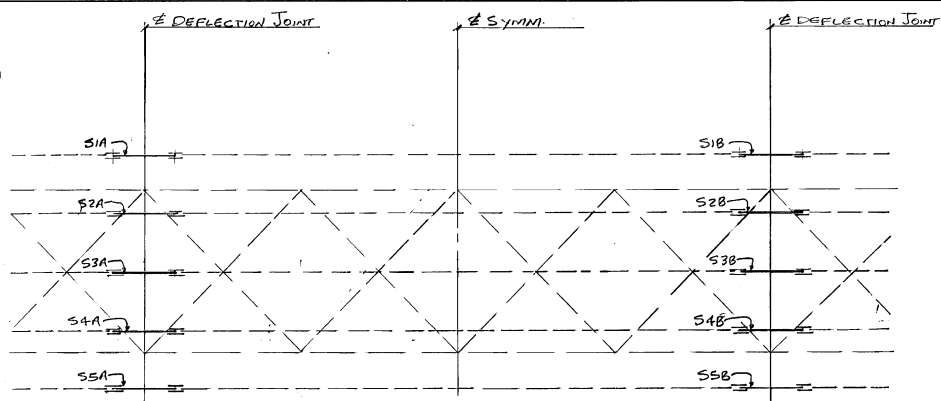
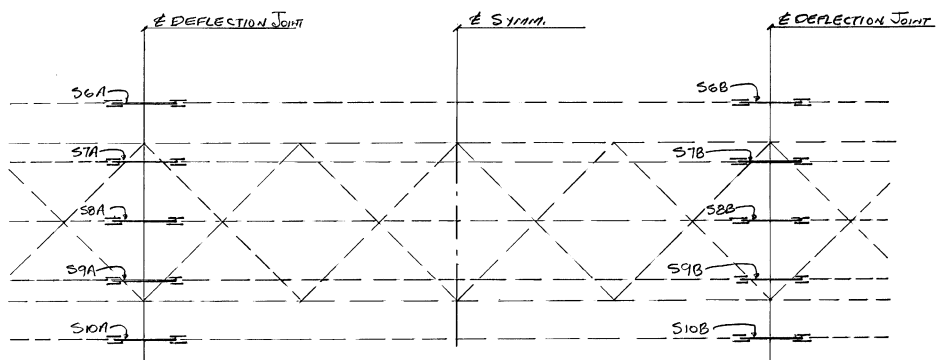


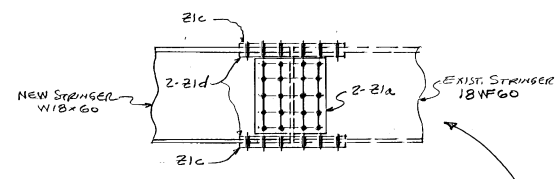
FEDERAL DISTRICT	STATE	FIELD PROJECT



ERECTION PLAN BRIDGE 40N

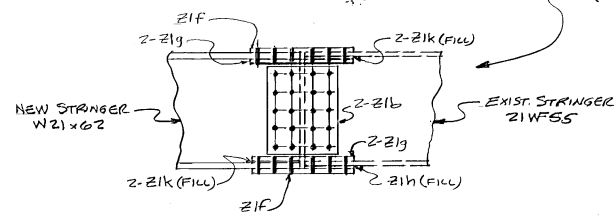


ERECTION PLAN 40S



FIELD SPlice DETAIL @ STRINGERS
S1A, S5A, S6A, S10A, S1B, S5B, S6B + S10B

ERECTOR NOTE:
FIELD DRILL 1/2" HOLES IN WEB & FLANGES OF EXIST. STRINGERS USING NEW SPlice PLATES AS TEMPLATE



FIELD SPlice DETAIL @ STRINGERS
S2A, S3A, S4A, S7A, S8A, S7B, S2B, S3B, S4B, S7B, S8B + S7B

ERECTOR NOTE: ALL BOLTS MUST BE LOCATED IN ACCORDANCE WITH THE LIST OF FIELD CONNECTIONS. HIGH STEEL STRUCTURES WILL NOT BE RESPONSIBLE FOR FURNISHING ADDITIONAL BOLTS OR FOR ANY OTHER RELATED COSTS OR DAMAGES RESULTING FROM IMPROPER LOCATION OF BOLTS.

LIST OF FIELD CONNECTIONS										ONE WASHER PER BOLT UNLESS NOTED OTHERWISE	
LINE	ACTUAL NO. REQ'D.	BOLT DIA.	BOLT LENGTH	BOLTS/CONN.	# OF CONNS.	GRIP	THICKNESS OF PGS. CONNECTED	PIECES CONNECTED AND REMARKS			
1	320	2 1/2"	20	16	15		1/2"	WEB SPlice @ W18x60			
2	480	2 1/2"	20	24	16		1/2"	WEB SPlice @ W21x62			
3											
4	384	3"	12	32	11		1/2"	TOP & BOT. FLG. SPlice @ W18x60			
5	288	2 1/2"	12	24	14		1/2"	TOP FLG. SPlice @ W21x62			
6	288	2 1/2"	12	24	12		1/2"	BOT. FLG. SPlice @ W21x62			
7											
8											
9											
10											
11											
12											
13											
14											
15											

SUMMARY OF FIELD BOLTS

4% ADDITIONAL ADDED
 ASTM A325 TYPE 1 1/4 HVY. HEX HEAD AND
 ASTM A563 GR. DH HVY. HEX NUT
 399 - 3/8" HIGH STRENGTH BOLTS x 0-3
 632 - 3/8" x 0-2 1/2" } RCT
 799 - 3/8" x 0-2 1/2" } RCT
 1830 - HARD RD. FLAT WASHER F436 FOR 3/8" BOLTS RCT

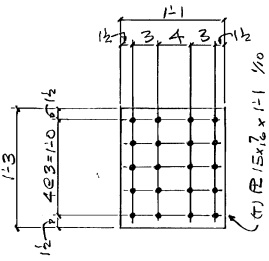
RCT Indicates Rotational Capacity Tested Bolts. Do Not Mix Nuts And Bolts From Different Containers Unless All Bolts And Nuts Have The Same Lot Number.

NOTES:

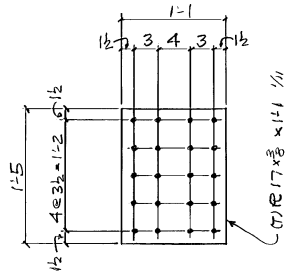
- NO CREDIT WILL BE ALLOWED FOR WORK PERFORMED BY OTHERS IN REPLACING OR CORRECTING MATERIALS OR WORKMANSHIP COVERED BY THIS DRAWING UNLESS EXPRESSLY AUTHORIZED BY HIGH STEEL STRUCTURES, INC. ALL FIELD CONNECTIONS TO BE MADE WITH 3/4" HIGH STRENGTH A325, TYPE BOLTS.
- NOTICE: WEIGHTS OF MEMBERS LISTED ON THESE DRAWINGS ARE ESTIMATED WEIGHTS AND ACTUAL WEIGHTS WILL VARY. HIGH STEEL STRUCTURES, INC. WILL NOT BE RESPONSIBLE FOR ANY ERECTION PROCEDURES, SHIPPING PROCEDURES, ETC. DEVELOPED USING ESTIMATED WEIGHTS AS SHOWN.
- NOTICE TO ERECTOR & CONTRACTOR: THIS STRUCTURAL STEEL IS BEING DELIVERED WITH THE FINAL FINISH COAT APPLIED. YOUR SPECIAL ATTENTION REQUIRES EXTREME CARE AND APPROPRIATE EQUIPMENT FOR HANDLING DURING ERECTION AND SUBSEQUENT FIELD OPERATIONS. HIGH STEEL STRUCTURES, INC. WILL NOT BE RESPONSIBLE FOR ANY TOUCH-UP REQUIRED DUE TO YOUR FAILURE TO PROPERLY PROTECT FINISH PAINT.
- ALL FIELD BOLTS THRU BOTTOM FLANGE ARE TO HAVE HEADS UP.
- ALL FIELD BOLTS THRU WEB OF FASCIA GIRDERS ARE TO HAVE HEADS ON OUTSIDE OF WEB.

△		
△		
△		
NO.	REVISION	DATE
 1770 Westwood Road Lancaster, PA 17605-0008 Phone 717/299-5228 A Division of High Industries, Inc.		
ERECTION PLAN REHAB. BRIDGE 40N & 40S ON I-91 OVER OTTAUQUUSCHEE RIVER HARTLAND, VERMONT STATE OF VERMONT, AGENCY OF TRANSPORTATION MONTPELIER, VERMONT		
STATE CONTRACT OR REF. NO. IM-091-1 (35)		
CONTRACTOR J. A. Mc DONALD		
IN CHARGE	MADE BY	DATE
LANCO(WC)	DWS	RF 6-28-92
CONTRACT NUMBER	DRAWING NUMBER	
VT-97764-1	E1 OF E1	

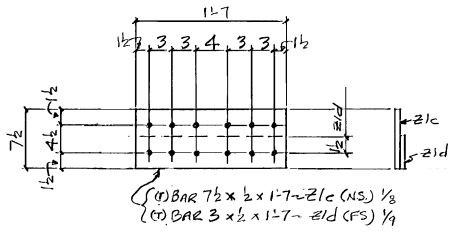
FED. ROAD DIST. NO.	STATE	FED. ROAD PROJ. NO.



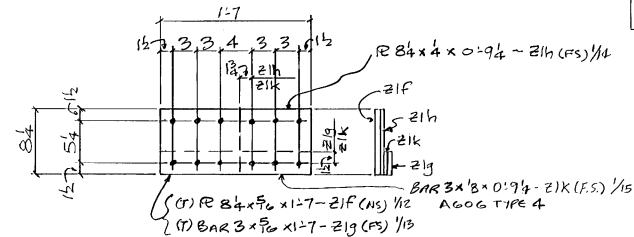
32-REQ'D-Z1a
SPUCE RS



48-REQ'D-Z1b
SPUCE RS




32-REQ'D-Z1c }
64-REQ'D-Z1d } SPUCE RS



48-REQ'D-Z1f }
96-REQ'D-Z1g } SPUCE RS
24-REQ'D-Z1h }
96-REQ'D-Z1k } FILL RS

SHOP NOTE
HOLES: 1/8" #
BOLTS: NONE
PAINT: NONE

△		
△		
△		
NO.	REVISION	DATE
870 Westfield Road Lancaster, PA 17605-0008 Phone 717/299-5225 HIGH STEEL STRUCTURES, INC.  A Division of High Industries, Inc.		
STRANGER JOB STANDARDS		
REHAB BRIDGE 40N & 40S ON I-91 OVER		
OTTAUQUECHEE RIVER		
HARTLAND, VERMONT		
STATE OF VERMONT AGENCY OF TRANSPORTATION		
MONTPELIER, VERMONT		
STATE CONTRACT OR REF. NO.	IM-09-11(35)	
CONTRACTOR	J.A. Mc DONALD	
IN CHARGE	LANCO (WC)	MADE BY DWC, CHK'D BY RF
CONTRACT NUMBER	VT-97764-1	DATE 6-26-97
CODE: 50	DRAWING NUMBER	21 OF 21

FED. ROAD DIST. NO.	STATE	FED. AID PROJ. NO.
1	VT	

GENERAL SHOP NOTES

SPECIFICATIONS:

ALL MATERIAL AND WORKMANSHIP TO BE IN ACCORDANCE WITH THE STATE OF VERMONT, AGENCY OF TRANSPORTATION, STANDARD SPECIFICATIONS FOR CONSTRUCTION DATED 1990, WITH CURRENT MODIFICATIONS AND ADDITIONS.

MATERIAL:

UNLESS NOTED OTHERWISE, ALL STEEL TO BE AASHTO M270 GRADE 36.
(T) INDICATES CHARPY V-NOTCH TESTING REQUIRED.

CLEANING:

BLAST CLEAN ALL STEEL TO SSPC-SP10 (NEAR WHITE).
BLAST CLEANING ANCHOR PROFILE TO BE FROM 1.5 TO 2.5 MILS DEEP.

PAINTING:

ALL STEEL, EXCEPT SPLICE PLATES, TO BE PAINTED (UNLESS NOTED) WITH A 3 COAT SYSTEM AS FOLLOWS:
PRIME COAT: CARBO ZINC 11 HS (INORGANIC ZINC) WITH 2.0 TO 6.0 MILS D.F.T.
INTER. COAT: CARBOLINE 893 (EPOXY) WITH 4.0 TO 10.0 MILS D.F.T.
FINISH COAT: CARBOLINE 133 HB (POLYURETHANE) WITH 3.0 TO 5.0 MILS D.F.T.
FINISH COAT COLOR TO BE GREEN, FEDERAL STANDARD 595, COLOR #14062.
SPLICE PLATES TO BE PAINTED WITH ONE COAT OF CARBO ZINC 11 HS (INORGANIC ZINC) WITH 2.0 TO 6.0 MILS D.F.T.

PRIME COAT TO BE APPLIED WITHIN 8 HOURS AFTER BLAST CLEANING.
STRIP COAT ALL EDGES OF STRINGERS PRIOR TO THE APPLICATION OF THE FULL PRIME COAT.
TOP FLANGE OF STRINGERS, AS SHOWN IN SECTION "A", SHALL RECEIVE A LIGHT RUST PREVENTIVE COAT OF PRIMER, NOT TO EXCEED 1.5 MILS D.F.T.

SHOP PROCEDURE:

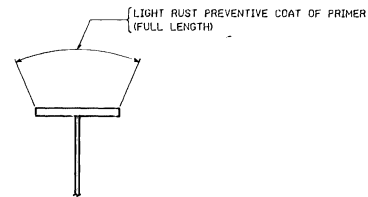
CAMBER TOLERANCE: N/A

INSPECTION:

SHOP INSPECTION BY E. L. CONWELL

DRAWING REFERENCE:

STRINGER JOB STANDARDS -PREFIXED 'Z'



TYP. PAINT SECTION "A"

NO.	REVISION	DATE
1		
2		
3		
4		
5		
6		
7		

370 Hempstead Road
Lancaster, PA 17605-0008
Phone 717/239-5118

HIGH STEEL STRUCTURES, INC. *HS*
A Division of High Industrial Structures

GENERAL SHOP NOTES
REHAB. BRIDGE 40N & 40S ON I-91
OVER OTTAUQUECHEE RIVER
HARTLAND, VERMONT
STATE OF VERMONT, AGENCY OF TRANSPORTATION
MONTPELIER, VERMONT

STATE CONTRACT OR REF. NO. IM-091-1(35)
CONTRACTOR J. A. Mc DONALD
IN CHARGE LANC (WC) MADE BY ADD CHKD. BY RF DATES 8-21-97
CONTRACT NUMBER VT-97764-1 DRAWING NUMBER NI OF NI

BRIDGE
40 N+S

FILE WITH
I 91-1 (22)

REHAB HARTLAND I-91

IM 091-1 (35)

Vermont Agency of
Transportation
PHASE 1-INTERSTATE
#122302-01
INITIALS
HANGER 438