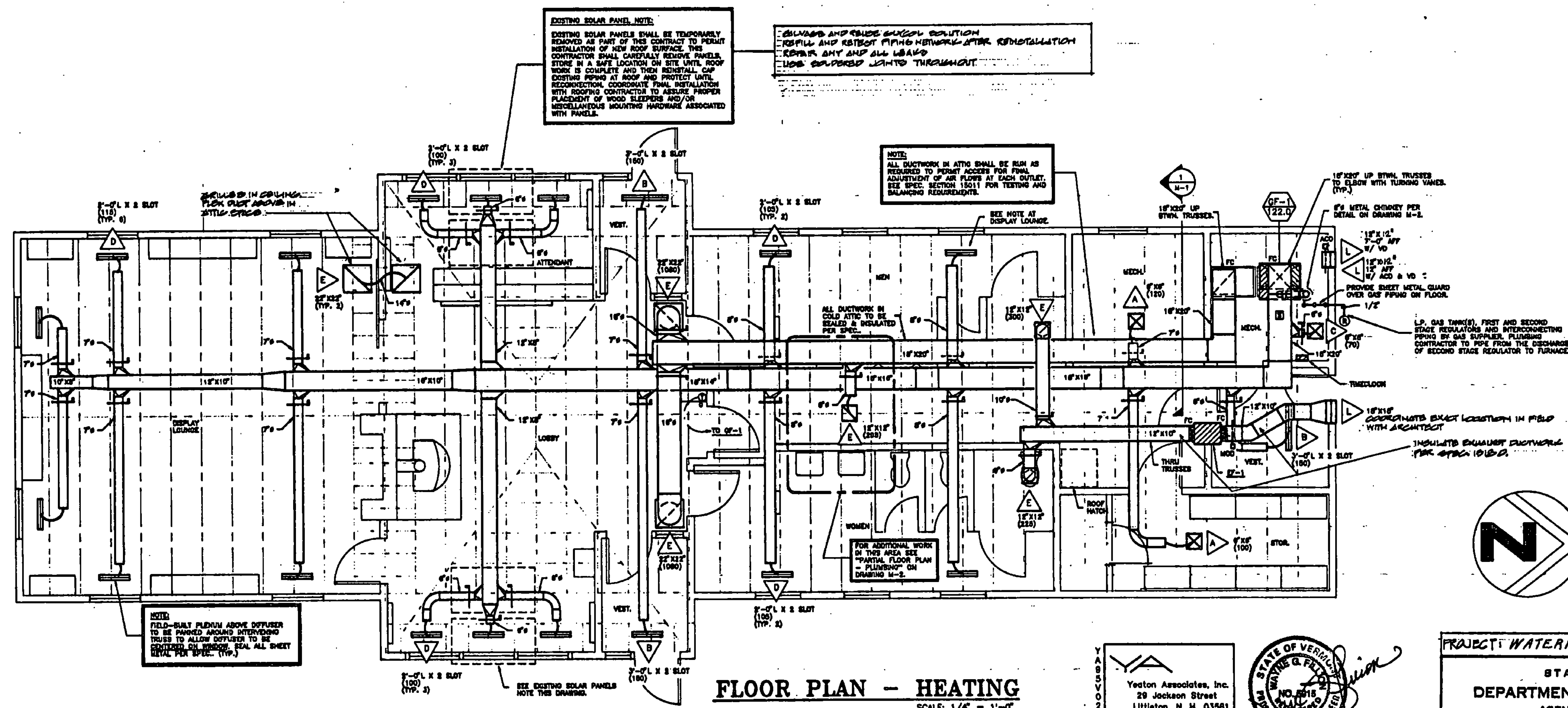


- GENERAL NOTES**
1. ALL EQUIPMENT AND DUCTWORK SHOWN DIAGRAMMATICALLY ONLY. EXACT LOCATION TO BE DETERMINED AND COORDINATED IN THE FIELD BY ALL TRADES INVOLVED.
 2. ALL ROUGH OPENINGS THRU EXTERIOR WALLS SHALL BE CAULKED WATERTIGHT.
 3. PITCH DUCT CONNECTIONS TO LOUVERS TO DRAIN TOWARD LOUVER.
 4. FLEXIBLE DUCTS TO BE NOT OVER 8 FEET LONG WITH APPROVED TRANSITIONS AND SMOOTH BENDS TO TERMINAL CONNECTIONS.
 5. FLEX DUCT SIZE TO MATCH RUNOUT SIZE UNLESS NOTED OTHERWISE.
 6. MOUNTING HEIGHTS FOR THERMOSTATS, EQUIPMENT ON/OFF SWITCHES, ETC. LOCATED IN HANDICAP ACCESSIBLE SPACES SHALL COMPLY WITH CURRENT STATE AND FEDERAL "HANDICAP COMPLIANCE" LEGISLATION (ADA).

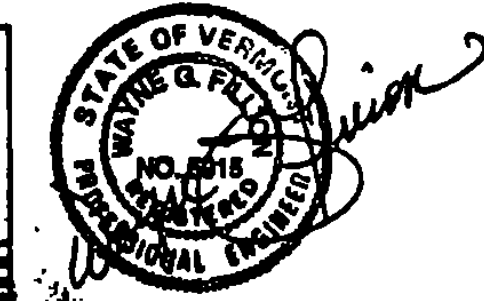
LEGEND

ACD	AUTOMATIC CONTROL DAMPER	⊠	SMOKE DETECTOR (FOR EQUIP. SHUTDOWN)
AF	ABOVE FINISHED FLOOR	⊙	THERMOSTAT W/GUARD
AL	ACOUSTICALLY LINED	⊠	SQUARE ELBOW W/TURNING VANES (T.V.)
ATC	AUTOMATIC TEMPERATURE CONTROL	⊠	EQUIPMENT TAG / MBH HEAT
CFM	CUBIC FEET PER-MINUTE	⊠	GRD / LOUVER SYMBOL
E.A.	ENTERING AIR	⊠	SUPPLY DUCT
E.A.T.	ENTERING AIR TEMPERATURE	⊠	RETURN OR EXHAUST DUCT
EF	EXHAUST FAN	⊠	CONN. POINT OF NEW WORK TO EXISTING
FC	FLEX CONNECTION	⊠	SANITARY WASTE ABOVE GRADE
FD	FIRE DAMPER	⊠	GAS PIPING
G.C.	GENERAL CONTRACTOR	⊠	FIXTURE TRAP PLAN VIEW
L.A.T.	LEAVING AIR TEMPERATURE	⊠	PLUMBING FIXTURE IDENTIFICATION NUMBER
MBH	THOUSAND BTU'S PER HOUR		
MOD	MOTOR OPERATED DAMPER		
M.C.	MECHANICAL CONTRACTOR		
N.T.S.	NOT TO SCALE		
RPM	REVOLUTIONS PER MINUTE		
TYP.	TYPICAL		
U/C	UNDER CUT DOOR BY G.C.		
VD	VOLUME DAMPER		



FLOOR PLAN - HEATING
SCALE: 1/4" = 1'-0"

YESTON ASSOCIATES, INC.
29 JOCKSON STREET
LITTLETON, N. H. 03561



CHARLES E. METZ
ARCHITECT
THE 1880 RICHARD DOE HOUSE
NEWBURY, VERMONT, 05051-0278

PROJECT: WATERFORD NO. IM-BLDG(3)

STATE OF VERMONT
DEPARTMENT OF STATE BUILDINGS
AGENCY OF ADMINISTRATION
MONTPELIER, VERMONT

THE WATERFORD WELCOME CENTER
WATERFORD, VERMONT
FLOOR PLAN - HEATING

DATE: JANUARY 1990	SCALE: 1/4" = 1'-0"	REVISIONS:	DWG. NO. M1
DRAWN BY: Y.A.	APPROVED BY: CEM		2 of 22