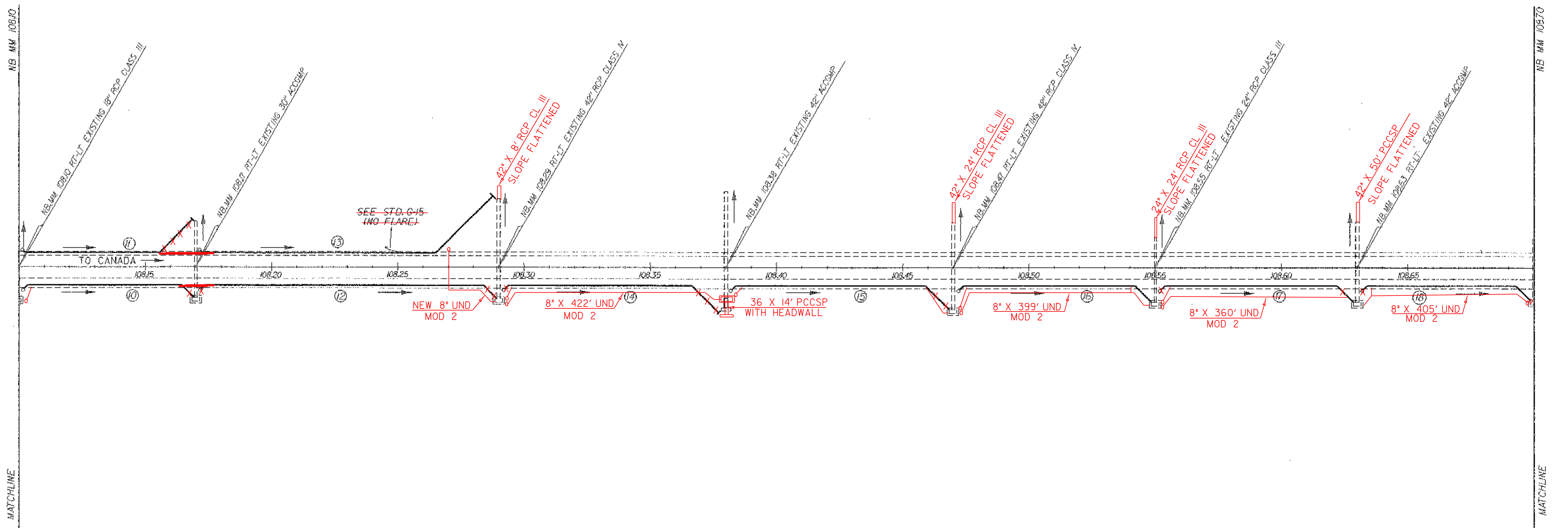


- 8" UNDERDRAIN (MODIFICATION #1)
- ⑩ NB MM 108.10 RT. ~ MM 108.17 RT.W/FB @ 108.10 RT.
 - ⑪ NB MM 108.10 LT. ~ MM 108.17 LT.W/FB @ 108.10 LT.
 - ⑫ NB MM 108.17 RT. ~ MM 108.29 RT.W/FB @ 108.17 RT.
 - ⑬ NB MM 108.17 LT. ~ MM 108.29 LT.W/FB @ 108.17 LT.
- ONE RUN
- BURIED ⑭ NB MM 108.29 RT. ~ MM 108.38 RT.W/FB @ 108.29 RT.
 - ⑮ NB MM 108.38 RT. ~ MM 108.47 RT.W/FB @ 108.38 RT.
 - BURIED ⑯ NB MM 108.47 RT. ~ MM 108.55 RT.W/FB @ 108.47 RT.
 - BURIED ⑰ NB MM 108.55 RT. ~ MM 108.63 RT.W/FB @ 108.55 RT.
 - ⑱ NB MM 108.63 RT. ~ MM 108.70 RT.W/FB @ 108.63 RT.
- FB @ 108.70 LT BURIED

~~STEEL BEAM GUARD RAIL~~
~~NB MM 108.25 LT. ~ MM 108.70 LT.~~

REMOVAL AND DISPOSAL
 OF GUARD RAIL
 NB MM 108.25 LT. ~ MM 108.70 LT.



DATUM	
VERTICAL	N/A
HORIZONTAL	N/A

NOT TO SCALE

NORTHBOUND MM 108.10 ~ 108.70	
SURVEYED BY	DATE
DRAWN BY	DATE
SQUAD LEADER	DELLA SANTA
DESIGN FILE NO. /SQDB/87A007A/DA007A.DGN	
IPARM FILE	DATE PLOTTED
DA007L03	20-MAR-1997
PROJ. NAME	GEORGIA - FAIRFAX
PROJ. NO.	IM-089-3(26)
SHEET	49 OF 121 SHEETS