

8" UNDERDRAIN (MODIFICATION #1)

- ① NB MM 107.55 RT. ~ MM 107.67 RT.W/FB @ 107.67 RT.
- ② NB MM 107.67 RT. ~ MM 107.75 RT.W/FB @ 107.75 RT.
- ③ NB MM 107.67 LT. ~ MM 107.75 LT.W/FB @ 107.75 LT.
- ④ NB MM 107.75 RT. ~ MM 107.83 RT.W/FB @ 107.83 RT.
- ⑤ NB MM 107.75 LT. ~ MM 107.83 LT.W/FB @ 107.83 LT.
- ⑥ NB MM 107.83 RT. ~ MM 107.90 RT.W/FB @ 107.90 RT.
- ⑦ NB MM 107.83 LT. ~ MM 107.90 LT.W/FB @ 107.90 LT.
- ⑧ NB MM 107.90 RT. ~ MM 107.99 RT.W/FB @ 107.99 RT.
- ⑨ NB MM 107.99 RT. ~ MM 108.10 RT.W/FB @ 108.10 RT.

STEEL BEAM GUARD RAIL
NB MM 107.54 RT. ~ MM 107.55 RT.

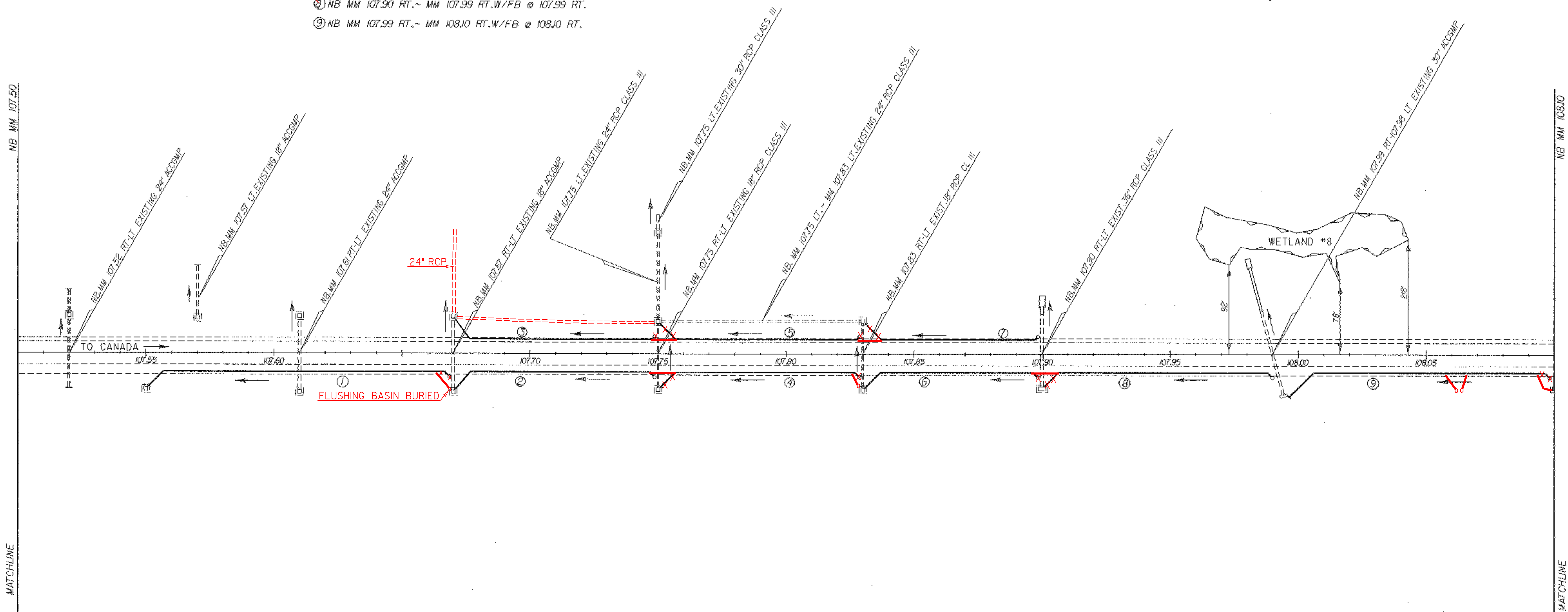
GUARD RAIL APPROACH SECTION, TYPE 1 MOD
NB MM 107.53 LT. ~ MM 107.54 LT.
NB MM 107.53 RT. ~ MM 107.54 RT.

REMOVAL AND DISPOSAL
OF GUARD RAIL
NB MM 107.53 LT. ~ MM 107.54 LT.
NB MM 107.53 RT. ~ MM 107.55 RT.



NB MM 107.50

NB MM 108.10



DATUM	
VERTICAL	N/A
HORIZONTAL	N/A

NORTHBOUND MM 107.50 ~ 108.10	
SURVEYED BY	DATE
DRAWN BY	SQUAD B DATE
SQUAD LEADER	DELLA SANTA
DESIGN FILE NO.	/S0DB/87A007A/DA007A.DGN
DATE	DATE
FILE	DA007L02 PLOTTED 20-MAR-1997
PROJ. NAME	GEORGIA - FAIRFAX
PROJ. NO.	IM-089-3(26)
SHEET 48 OF 121	SHEETS

NOT TO SCALE