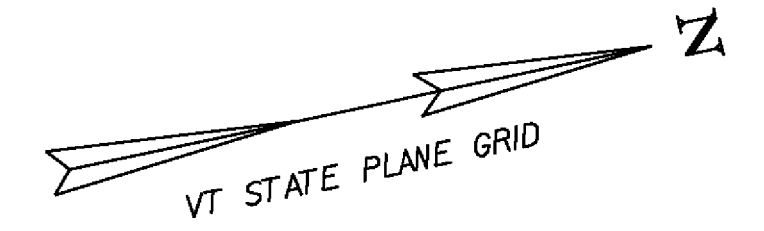


REMOVAL OF EXISTING FENCE
 NB 3643+28 ~ NB 3647+15 RT
 SB 3640+49 ~ SB 3647+40 LT

WOVEN WIRE FENCE W/STEEL POSTS
 3644+00 NB 3643+28 ~ NB 3647+15 RT
 3644+00 SB 3640+49 ~ SB 3647+40 LT

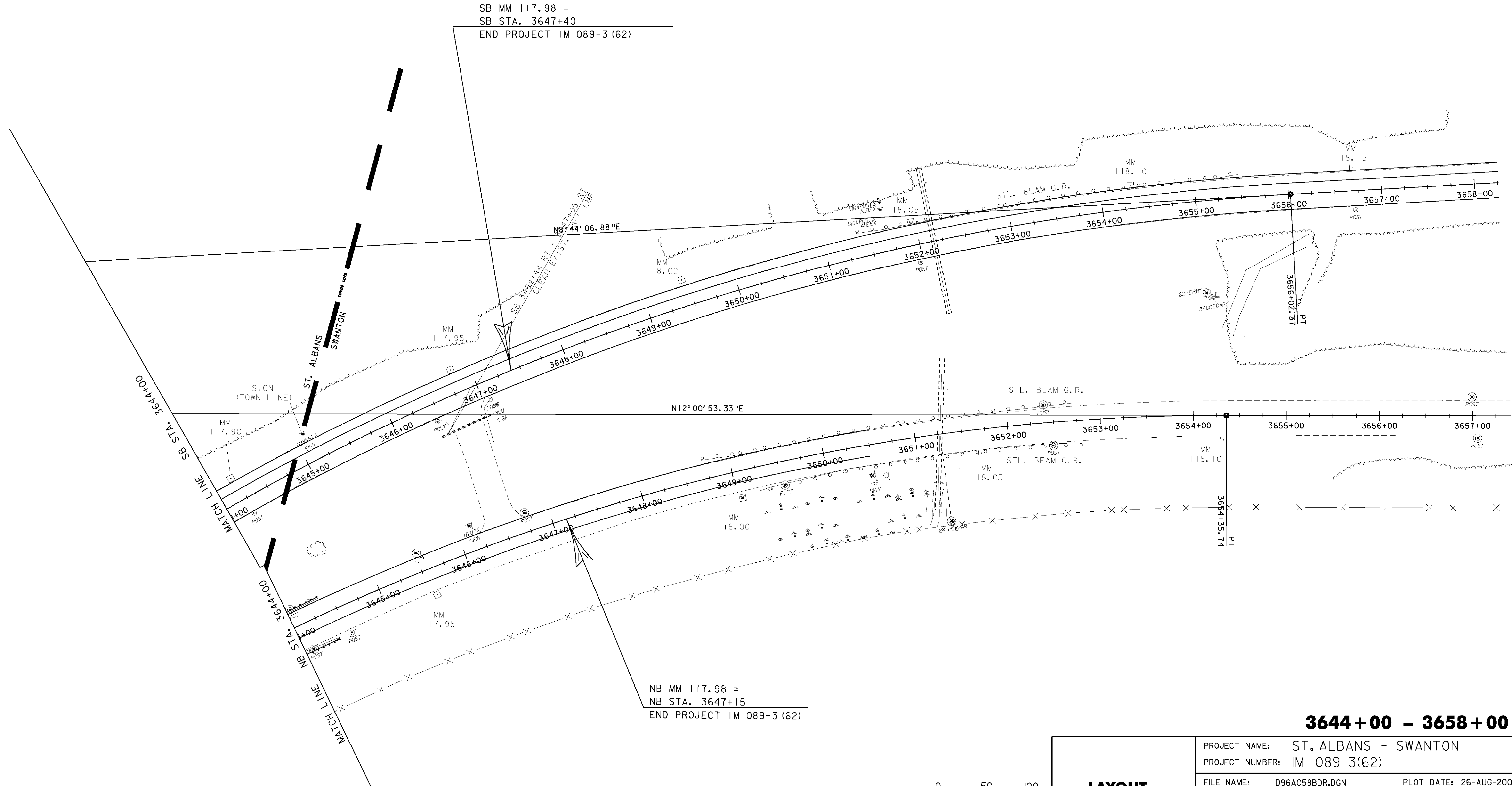
REMOVAL & DISPOSAL OF GUARDRAIL
 NB 3644+00 ~ NB 3644+36 LT
 RAMP 'B' 3644+00 RT ~ 3644+40 RT

STEEL BEAM GUARDRAIL, GALVANIZED
 NB 3644+00 ~ NB 3644+34 LT
 RAMP 'B' 3644+00 RT ~ 3644+40 RT

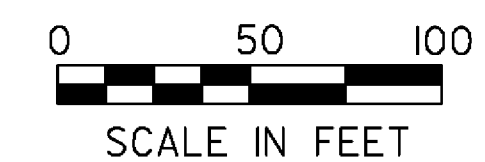


SB MM 117.98 =
 SB STA. 3647+40
 END PROJECT IM 089-3 (62)

NB MM 117.98 =
 NB STA. 3647+15
 END PROJECT IM 089-3 (62)



3644+00 - 3658+00



LAYOUT SHEET #16

PROJECT NAME: ST. ALBANS - SWANTON
 PROJECT NUMBER: IM 089-3(62)

FILE NAME: D96A058BDR.DGN
 PROJECT LEADER: K. ROBBIE
 DESIGNED BY: P. BEYOR
 D96A058L15.J

PLOT DATE: 26-AUG-2009
 DRAWN BY: P. BEYOR
 CHECKED BY: A. BOMBARDIER
 SHEET 37 OF 117