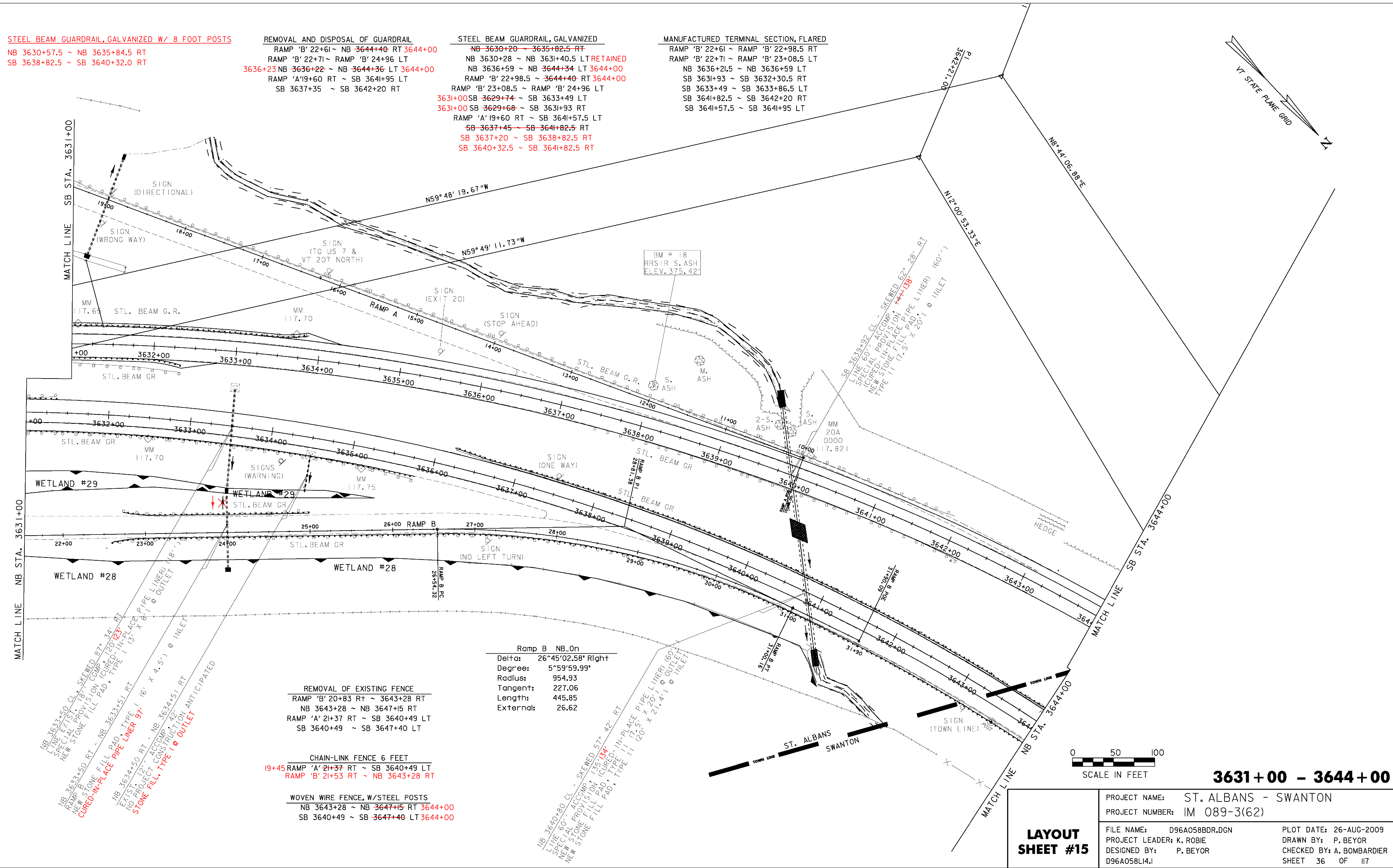


STEEL BEAM GUARDRAIL, GALVANIZED W/ 8 FOOT POSTS
 NB 3630+57.5 ~ NB 3635+84.5 RT
 SB 3638+82.5 ~ SB 3640+32.0 RT

REMOVAL AND DISPOSAL OF GUARDRAIL
 RAMP 'B' 22+61 ~ NB 3644+40 RT 3644+00
 RAMP 'B' 22+71 ~ RAMP 'B' 24+96 LT
 3636+23 NB 3636+22 ~ NB 3644+36 LT 3644+00
 RAMP 'A' 19+60 RT ~ SB 3641+95 LT
 SB 3637+35 ~ SB 3642+20 RT

STEEL BEAM GUARDRAIL, GALVANIZED
 NB 3630+20 ~ 3635+82.5 RT
 NB 3630+28 ~ NB 3631+40.5 LT **RETAINED**
 NB 3636+59 ~ NB 3644+34 LT 3644+00
 RAMP 'B' 22+98.5 ~ 3644+40 RT 3644+00
 RAMP 'B' 23+08.5 ~ RAMP 'B' 24+96 LT
 3631+00 SB 3629+74 ~ SB 3633+49 LT
 3631+00 SB 3629+68 ~ SB 3631+93 RT
 RAMP 'A' 19+60 RT ~ SB 3641+57.5 LT
 SB 3637+45 ~ SB 3641+82.5 RT
 SB 3637+20 ~ SB 3638+82.5 RT
 SB 3640+32.5 ~ SB 3641+82.5 RT

MANUFACTURED TERMINAL SECTION, FLARED
 RAMP 'B' 22+61 ~ RAMP 'B' 22+98.5 RT
 RAMP 'B' 22+71 ~ RAMP 'B' 23+08.5 LT
 NB 3636+21.5 ~ NB 3636+59 LT
 SB 3631+93 ~ SB 3632+30.5 RT
 SB 3633+49 ~ SB 3633+86.5 LT
 SB 3641+82.5 ~ SB 3642+20 RT
 SB 3641+57.5 ~ SB 3641+95 LT



MATCH LINE NB STA. 3631+00

MATCH LINE SB STA. 3631+00

0 50 100
 SCALE IN FEET

3631+00 - 3644+00

Ramp B NB_On	
Delta:	26°45'02.58" Right
Degree:	5°59'59.99"
Radius:	954.93
Tangent:	227.06
Length:	445.85
External:	26.62

REMOVAL OF EXISTING FENCE
 RAMP 'B' 20+83 Rt ~ 3643+28 RT
 NB 3643+28 ~ NB 3647+15 RT
 RAMP 'A' 21+37 RT ~ SB 3640+49 LT
 SB 3640+49 ~ SB 3647+40 LT

CHAIN-LINK FENCE 6 FEET
 19+45 RAMP 'A' 21+37 RT ~ SB 3640+49 LT
 RAMP 'B' 21+53 RT ~ NB 3643+28 RT

WOVEN WIRE FENCE, W/STEEL POSTS
 NB 3643+28 ~ NB 3647+15 RT 3644+00
 SB 3640+49 ~ SB 3647+40 LT 3644+00

MB 3633+50 CL - SKEWED 87° 34' RT
 LINE EXIST.
 SPECIAL PROVISION ON CURVE
 NEW STONE FILL PAD, TYPE I (3' X 6') @ INLET
 NB 3633+50 RT - NB 3633+51 RT
 RAMP 'B' 20+83 RT
 CURED-IN-PLACE PIPE LINER 97' (6' X 4.5') @ INLET
 NB 3634+50 RT - NB 3634+51 RT
 EXIST.
 12' ACCOMP. CONSTRUCTION ANTICIPATED
 STONE FILL, TYPE I @ OUTLET

MB 3640+80 CL - SKEWED 57° 42' RT
 LINE EXIST.
 SPECIAL PROVISION ON CURVE
 NEW STONE FILL PAD, TYPE I (20' X 21.4') @ INLET
 NB 3640+80 RT - NB 3640+81 RT
 RAMP 'B' 21+53 RT
 CURED-IN-PLACE PIPE LINER 160'
 (7.5' X 20') @ INLET

LAYOUT SHEET #15	PROJECT NAME: ST. ALBANS - SWANTON	PLOT DATE: 26-AUG-2009
	PROJECT NUMBER: IM 089-3(62)	DRAWN BY: P. BEYOR
	DESIGNED BY: P. BEYOR	CHECKED BY: A. BOMBARDIER
	D96A058L4J	SHEET 36 OF 117