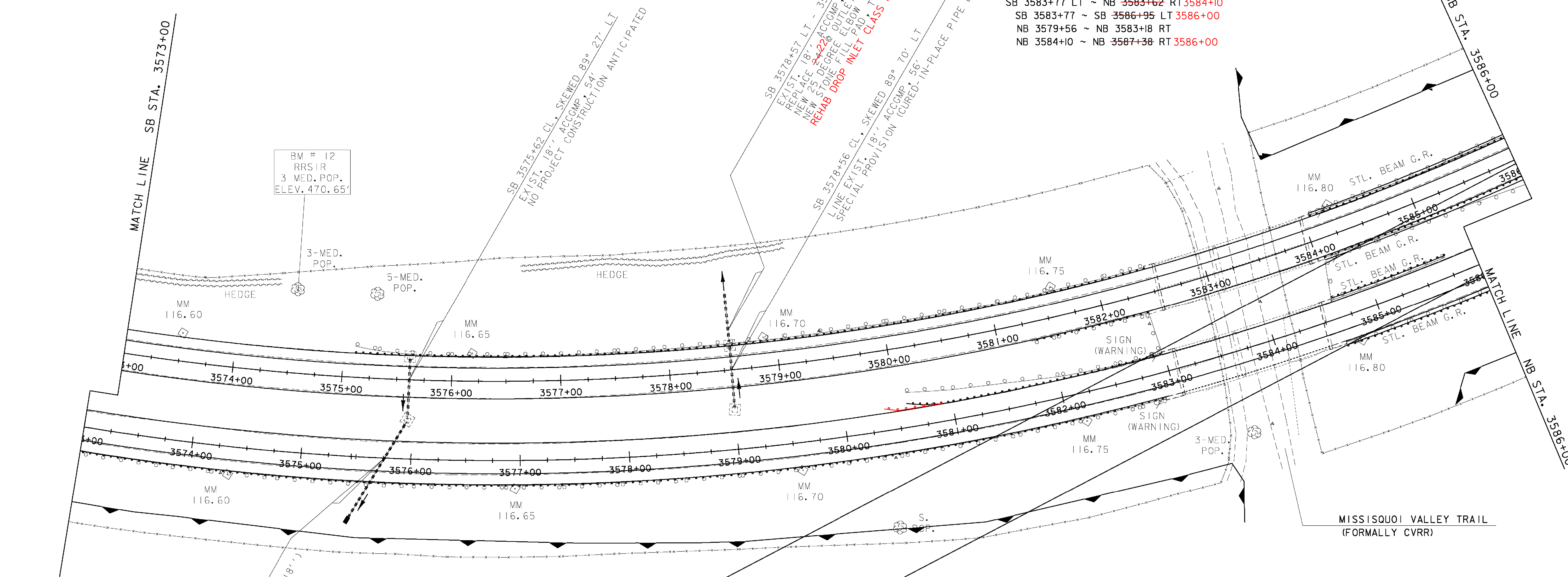
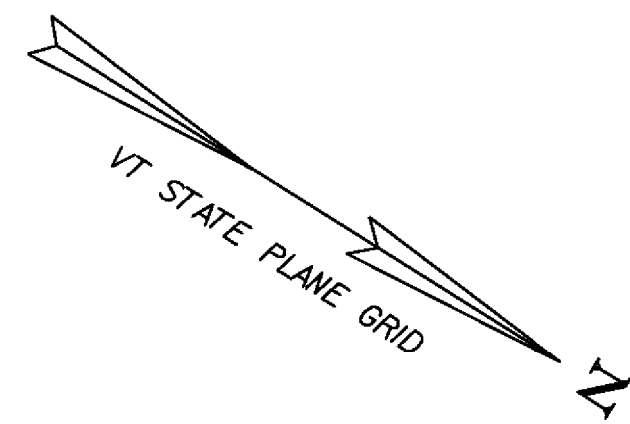


WOVEN WIRE FENCE, W/STEEL POSTS
 NB 3555+80 ~ NB 3579+56 RT
 3573+00

REMOVAL OF EXISTING FENCE
 NB 3547+20 ~ NB 3583+18 RT
 NB 3584+10 ~ NB 3620+51 RT
 SB 3546+61 ~ SB 3582+77 LT
 SB 3582+77 LT ~ NB 3582+92 RT
 SB 3583+77 LT ~ NB 3583+62 RT
 SB 3583+78 ~ SB 3620+92 LT

CHAIN-LINK FENCE, 6 FEET
 3573+00 SB 3546+61 ~ SB 3582+77 LT
 SB 3582+77 LT ~ NB 3582+92 RT 3583+18
 SB 3583+77 LT ~ NB 3583+62 RT 3584+10
 SB 3583+77 ~ SB 3586+95 LT 3586+00
 NB 3579+56 ~ NB 3583+18 RT
 NB 3584+10 ~ NB 3587+38 RT 3586+00



BM # 12
 RRS IR
 3 MED. POP.
 ELEV. 470.65'

SB 3575+62 CL, SKEWED 89° 27' LT
 EXIST. 18" ACCOMP. 54"
 NO PROJECT CONSTRUCTION ANTICIPATED

SB 3578+57 LT - 3578+57 LT
 EXIST. 18" ACCOMP. 54"
 NEW 36" DEGREE OUTLET 43"
 REHAB DROP INLET CLASS 1
 SB 3578+56 CL, SKEWED 89° 70' LT
 LINE EXIST. 18" ACCOMP. 54"
 SPECIAL PROVISION (CURVED IN-PLACE PIPE LINED) (18'')

MATCH LINE SB STA. 3573+00

MATCH LINE SB STA. 3586+00

MATCH LINE NB STA. 3586+00

STEEL BEAM GUARDRAIL, GALVANIZED W/8' POSTS
 NB 3573+00 NB 3562+10 ~ NB 3582+92 RT NB 3582+67 RT
 NB 3580+97 ~ NB 3582+97 LT
 NB 3584+99.5 NB 3584+62 ~ NB 3585+74.5 LT
 NB 3584+99.5 NB 3584+62 ~ NB 3604+74.5 RT SB 3586+00 RT
 SB 3575+13.1 ~ SB 3582+46 LT 3582+09
 SB 3581+27 ~ SB 3582+39.6 RT SB 3582+02 RT
 SB 3584+31 SB 3584+06 ~ SB 3603+93.5 LT SB 3586+00 LT
 SB 3584+07 ~ SB 3586+32 RT

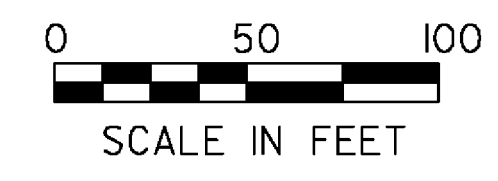
STEEL BEAM GUARDRAIL, GALVANIZED
 SB 3584+07 ~ SB 3586+00 RT
 NB 3580+72 ~ NB 3582+72 LT

SNOW BARRIER, GALVANIZED
 BRIDGE 92N 38.3' LT & 39.0' RT
 BRIDGE 92S 38.8' LT & 38.8' RT

REMOVAL AND DISPOSAL OF GUARDRAIL
 3573+00 NB 3564+71 ~ NB 3582+92 RT
 NB 3580+59 ~ NB 3582+97 LT 3582+72
 NB 3584+99.5 NB 3584+62 ~ NB 3604+81 RT NB 3586+00 RT
 NB 3584+99.5 NB 3584+62 ~ NB 3585+74.5 LT NB 3585+74.5 LT
 SB 3575+13.1 ~ SB 3582+46 LT 3582+09
 SB 3581+27 ~ SB 3582+39.6 RT SB 3582+02 RT
 SB 3584+31 SB 3584+06 ~ SB 3604+35 LT SB 3586+00 LT
 SB 3584+07 ~ SB 3586+66 RT

MANUFACTURED TERMINAL SECTION, FLARED
 NB 3580+59.5 ~ NB 3580+97 LT
 NB 3580+34.5 ~ NB 3580+72 LT

3573+00 - 3586+00



LAYOUT SHEET #11

| | |
|------------------------------------|---------------------------|
| PROJECT NAME: ST. ALBANS - SWANTON | PLOT DATE: 26-AUG-2009 |
| PROJECT NUMBER: IM 089-3(62) | DRAWN BY: P. BEYOR |
| FILE NAME: D96A058BDR.DGN | CHECKED BY: A. BOMBARDIER |
| PROJECT LEADER: K. ROBBE | SHEET 32 OF 117 |
| DESIGNED BY: P. BEYOR | |