

REMOVAL OF EXISTING FENCE
 NB 3495+11 ~ NB 3546+82 RT
 NB 3547+20 ~ NB 3583+18 RT
 SB 3492+51 ~ SB 3546+22 LT
 SB 3546+61 ~ SB 3582+77 LT

CHAIN-LINK FENCE, 6 FEET
 3544+00 SB 3540+38 ~ SB 3546+22 LT
 SB 3546+61 ~ SB 3582+77 LT 3559+00
 3544+00 NB 3534+56 ~ NB 3546+82 RT
 NB 3547+20 ~ NB 3555+80 RT

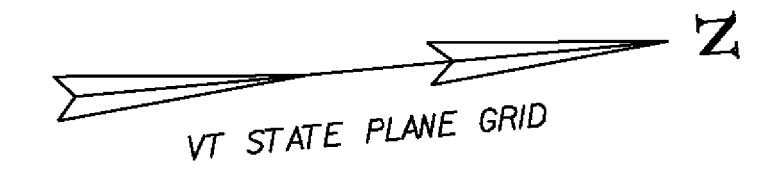
WOVEN WIRE FENCE, W/STEEL POSTS
 NB 3508+27 ~ NB 3546+82 RT
 NB 3555+80 ~ NB 3579+56 RT
 3559+00

STEEL BEAM GUARDRAIL, GALVANIZED
 3544+00 NB 3541+65 ~ NB 3547+65 LT
 SB 3546+00 ~ SB 3550+12.5 RT

MANUFACTURED TERMINAL SECTION, FLARED
 SB 3550+12.5 ~ SB 3550+50 RT

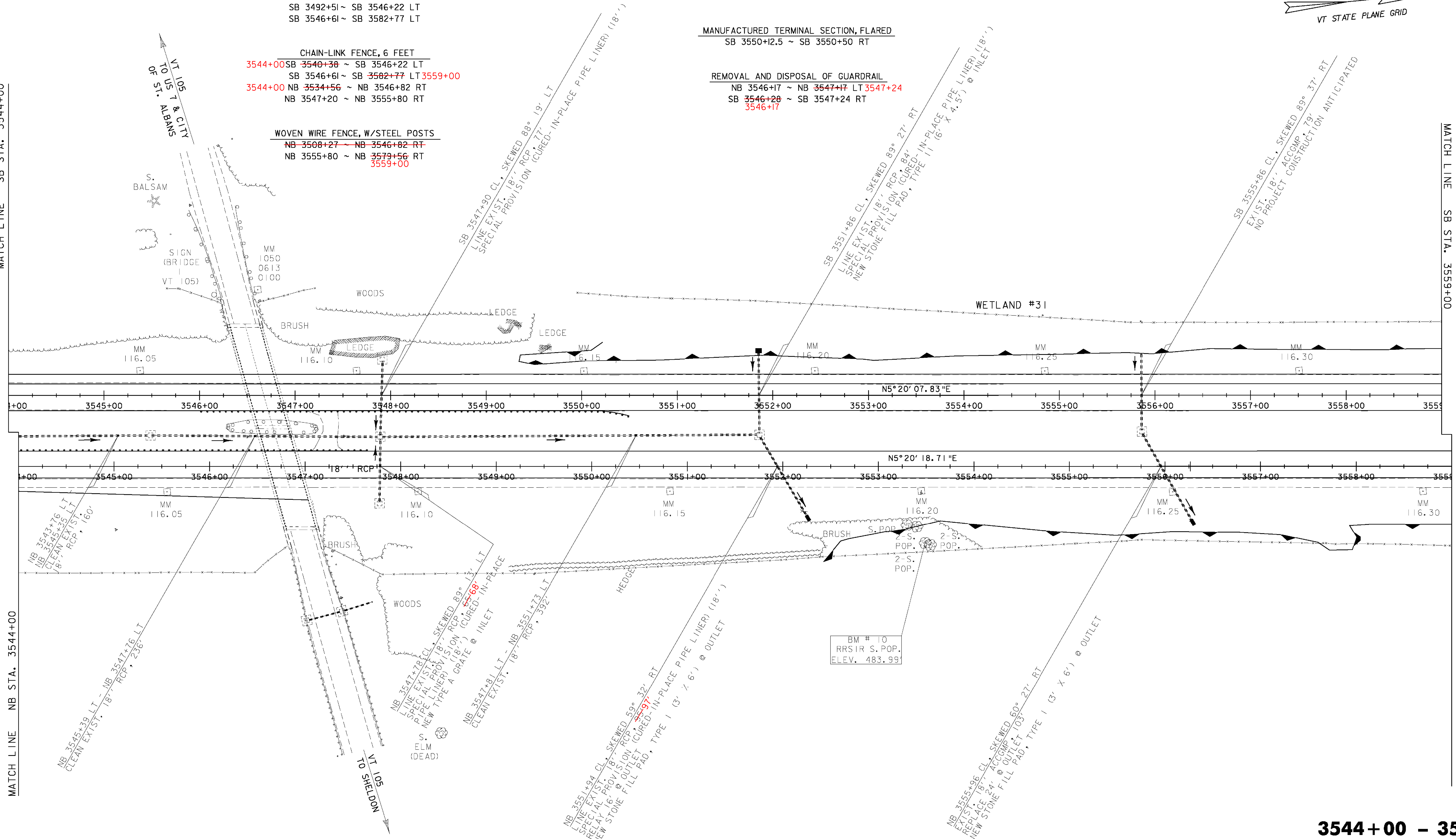
REMOVAL AND DISPOSAL OF GUARDRAIL
 NB 3546+17 ~ NB 3547+17 LT 3547+24
 SB 3546+28 ~ SB 3547+24 RT
 3546+17

SNOW BARRIER, GALVANIZED
 VT 105 - 144' LT 134.6
 VT 105 - 144' RT 134.6



MATCH LINE SB STA. 3544+00

MATCH LINE SB STA. 3559+00

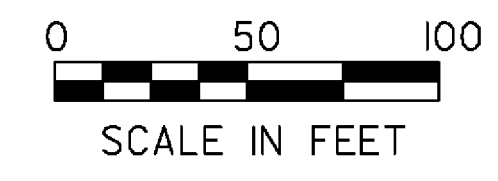


MATCH LINE NB STA. 3544+00

MATCH LINE NB STA. 3559+00

BM # 10
 RRSIR S. POP.
 ELEV. 483.99

3544+00 - 3559+00



LAYOUT SHEET #9	PROJECT NAME: ST. ALBANS - SWANTON	FILE NAME: D96A058BDR.DGN	PLOT DATE: 03-SEP-2009
	PROJECT NUMBER: IM 089-3(62)	DESIGNED BY: P. BEYOR	DRAWN BY: P. BEYOR
		D96A058L08.I	CHECKED BY: A. BOMBARDIER
			SHEET 30 OF 117