

SNOW BARRIER, GALVANIZED  
 VT 36 - I46' LT I36.4  
 VT 36 - I46' RT I36.4

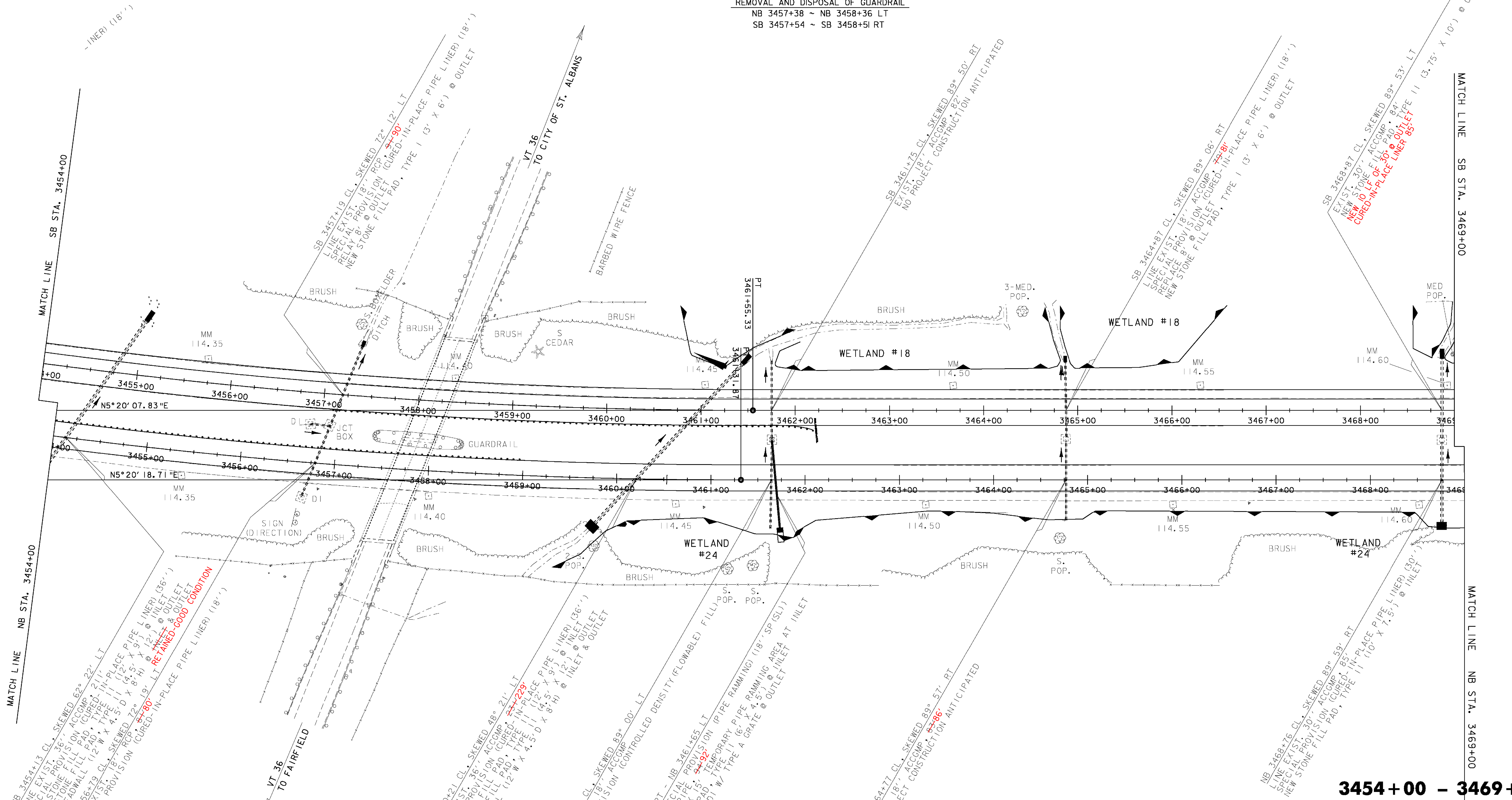
REMOVAL OF EXISTING FENCE  
 NB 3442+30 ~ NB 3457+25 RT  
 NB 3457+64 ~ NB 3489+73 RT  
 SB 3442+54 ~ SB 3458+25 LT  
 SB 3458+67 ~ SB 3491+93 LT

WOVEN WIRE FENCE, W/STEEL POSTS  
 NB 3442+30 ~ NB 3457+25 RT  
 NB 3457+64 ~ NB 3489+73 RT  
 SB 3442+54 ~ SB 3458+25 LT  
 SB 3458+67 ~ SB 3491+93 LT

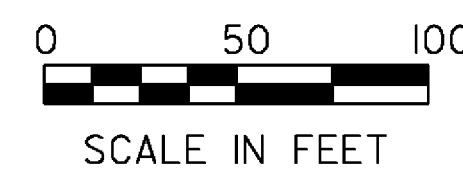
STEEL BEAM GUARDRAIL, GALVANIZED  
 3454+00 NB 3453+76 ~ NB 3459+01 LT  
 SB 3457+10 ~ SB 3461+85 RT

MANUFACTURED TERMINAL SECTION, FLARED  
 NB 3453+38.5 ~ NB 3453+76 LT  
 SB 3461+85 ~ SB 3462+22.5 RT

REMOVAL AND DISPOSAL OF GUARDRAIL  
 NB 3457+38 ~ NB 3458+36 LT  
 SB 3457+54 ~ SB 3458+51 RT



**3454+00 - 3469+00**



**LAYOUT SHEET #3**

PROJECT NAME: ST. ALBANS - SWANTON	
PROJECT NUMBER: IM 089-3(62)	
FILE NAME: D96A058BDR.DGN	PLOT DATE: 26-AUG-2009
PROJECT LEADER: K. ROBBIE	DRAWN BY: P. BEYOR
DESIGNED BY: P. BEYOR	CHECKED BY: A. BOMBARDIER
D96A058L02.I	SHEET 24 OF 117