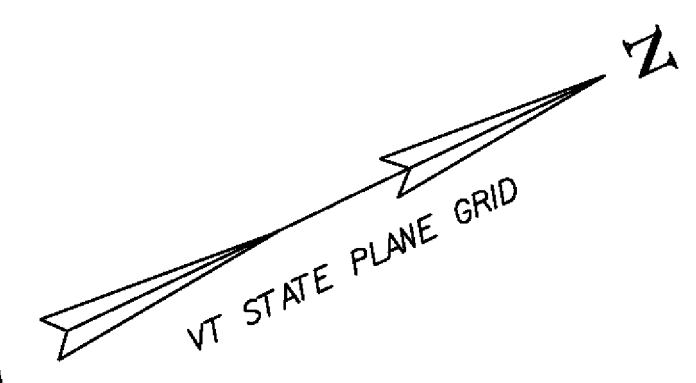


REMOVAL OF EXISTING FENCE  
 NB 3442+30 ~ NB 3457+25 RT  
 SB 3442+54 ~ SB 3458+25 LT

WOVEN WIRE FENCE, W/STEEL POSTS  
 45NB 3442+30 ~ NB 3457+25 RT 4+00  
 SB 3442+54 ~ SB 3458+25 LT  
 54+00

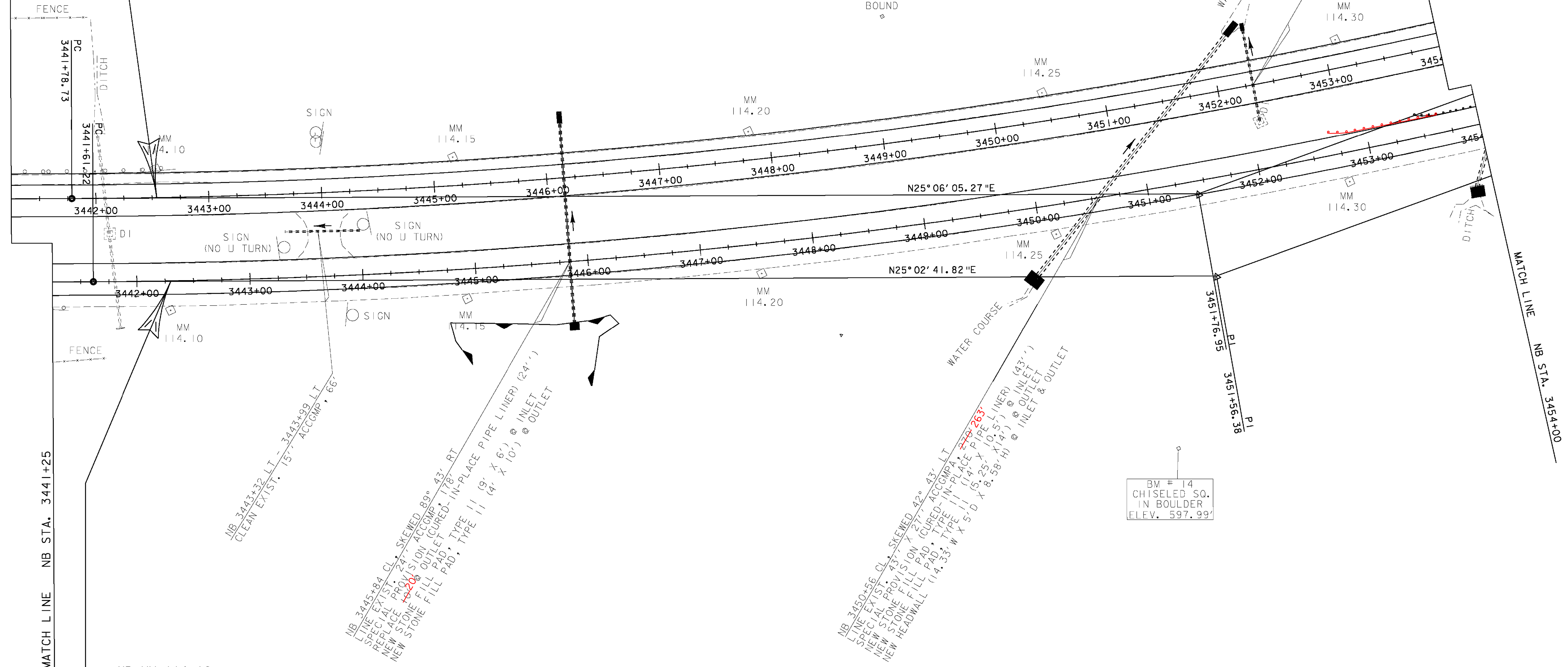
STEEL BEAM GUARDRAIL, GALVANIZED  
 NB 3453+01 - NB 3454+00 LT

MANUFACTURED TERMINAL SECTION, FLARED  
 NB 3452+63.5 - NB 3453+01LT



MATCH LINE SB STA. 3441+25

SB MM 114.10 =  
 SB STA. 3442+54  
 BEGIN PROJECT IM 089-3 (62)



MATCH LINE NB STA. 3441+25

NB MM 114.10 =  
 NB STA. 3442+29  
 BEGIN PROJECT IM 089-3 (62)

NB 3443+32 LT - 3443+99 LT  
 ACCOMP. 66'  
 CLEAN EXIST. 15'

NB 3445+84 CL - SKEWED 89° 43' RT  
 SPECIALIST PROVIDION RCP 8" RT  
 NEW STONE FILL PAD, TYPE II (9' X 6') @ INLET  
 NEW STONE FILL PAD, TYPE II (4' X 10') @ OUTLET  
 IN-PLACE PIPE LINER (24'')

NB 3450+56 CL - SKEWED 42° 43' LT  
 SPECIALIST PROVIDION RCP 8" LT  
 NEW STONE FILL PAD (CURED ACCOMP. LT)  
 NEW STONE FILL PAD, TYPE II (14' X 10.5') @ INLET  
 NEW HEADWALL (14.33' W X 5' D X 8.58' H) @ INLET & OUTLET

BM # 14  
 CHISELED SQ.  
 IN BOULDER  
 ELEV. 597.99'

**3441+25 - 3454+00**



**LAYOUT SHEET #2**

PROJECT NAME: ST. ALBANS - SWANTON	
PROJECT NUMBER: IM 089-3(62)	
FILE NAME: D96A058BDR.DGN	PLOT DATE: 03-SEP-2009
PROJECT LEADER: K. ROBBIE	DRAWN BY: P. BEYOR
DESIGNED BY: P. BEYOR	CHECKED BY: A. BOMBARDIER
D96A058LOI.I	SHEET 23 OF 117