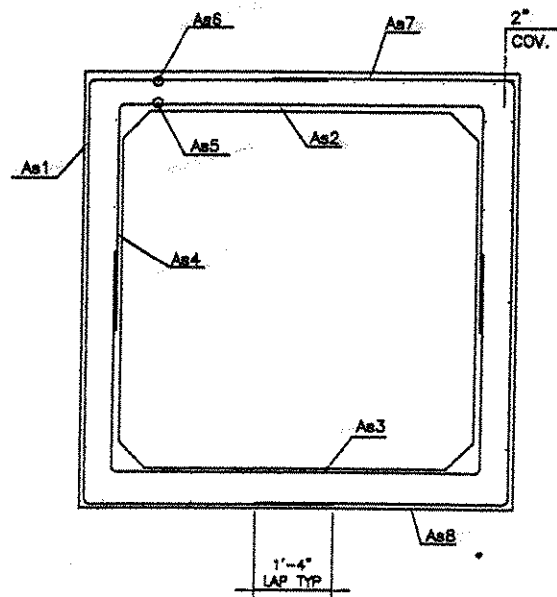


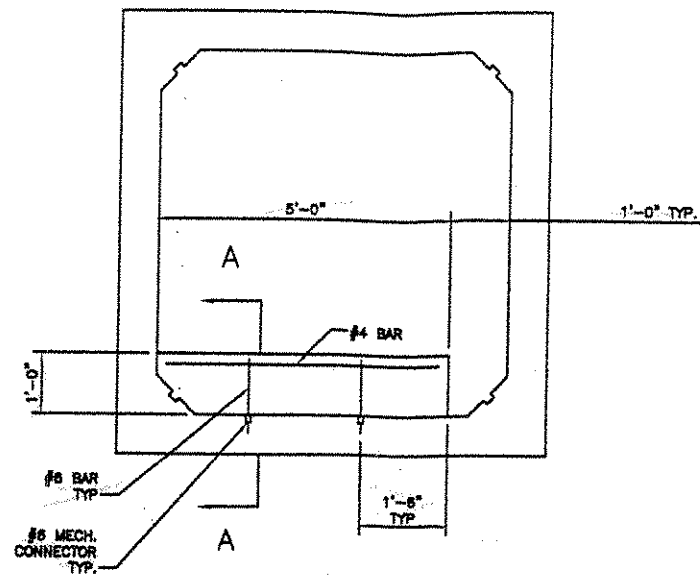
MK	Size	Spcc	Len	Type	A	B	C
As1	4	12"	127"	U"	1'-9"	7'-1"	1'-9"
As2	5	6"	86"	Str.	---	7'-2"	---
As3	5	6"	86"	Str.	---	7'-2"	---
As4	4	12"	84"	Str.	---	7'-0"	---
As5	4	12"	85"	Str.	---	7'-1"	---
As6	4	12"	85"	Str.	---	7'-1"	---
As7	4	12"	86"	Str.	---	7'-2"	---
As8	4	12"	86"	Str.	---	7'-2"	---

REBAR REINFORCEMENT TABLE

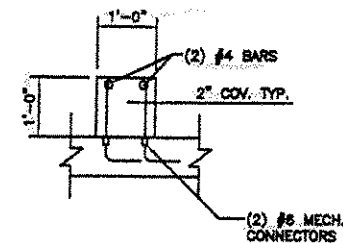


MK	As	REQ. in'
As1	0.192	
As2	0.432	
As3	0.454	
As4	0.192	
As5	0.192	
As6	0.192	
As7	0.192	
As8	0.192	

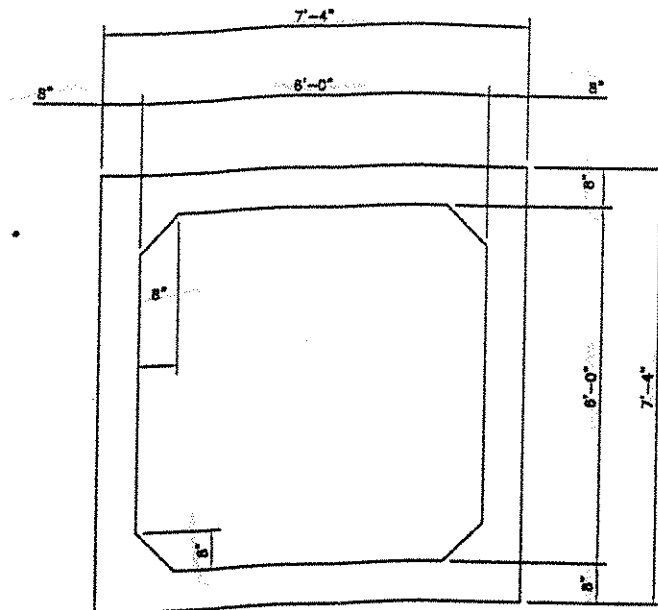
MESH REINFORCEMENT TABLE



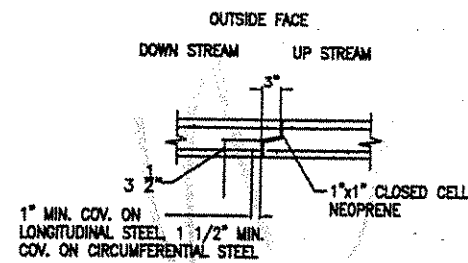
BAFFLE DETAIL



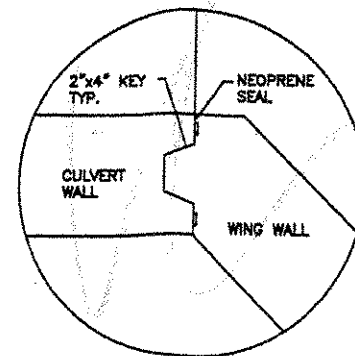
SECTION A-A



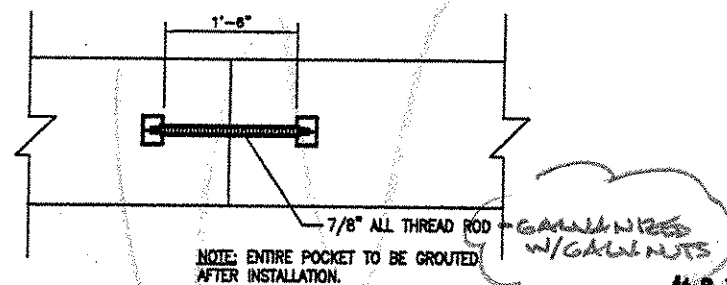
SECTION A-2



JOINT DETAIL



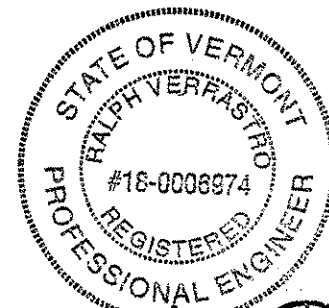
DETAIL B-2



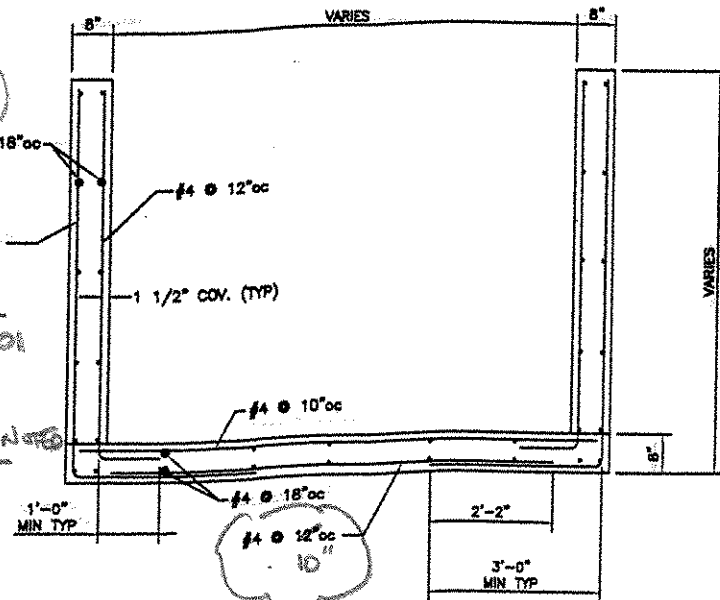
RECESSED DRAW CONNECTOR (4 PER SECTION)

V.A.O.T. RECEIVED  
 CKD BY: *C. Roy* OK'D BY: *mjl*  
 3-21-01 3-29-01  
 MAR 21 2001

RECOMMEND APPROVED *[Signature]*  
 BY: *mjl* DATE: 3-29-01



*Ralph Verastri*  
 2/2/01



TYPICAL END SECTION

STATE OF VERMONT RALPH VERASTRI #16-0008974 REGISTERED PROFESSIONAL ENGINEER		TOWN OF ST. ALBANS, VT. 6'-0" x 6'-0" x 78'-0" BR 87-3 NORTHBOUND		SHEET 2 OF 3
DELTA ENGINEERS, P.C. ENGINEERS • ARCHITECTS <small>254 COURT STREET, BARRINGTON, VT 05647-3000</small>		CONTRACTOR: <b>461</b> ENGINEER: DWN BY: GAS CKD BY: RET		
<small>SCALE: NONE</small>		<small>REV: 0 DATE: 2/12/01</small>		