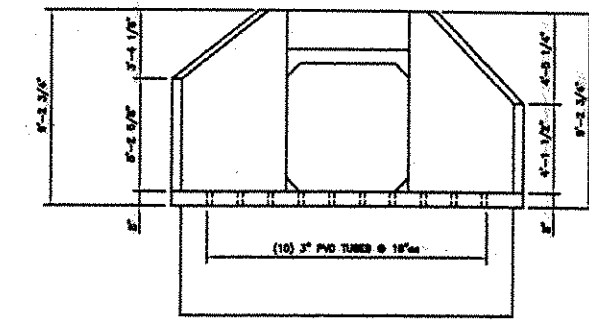
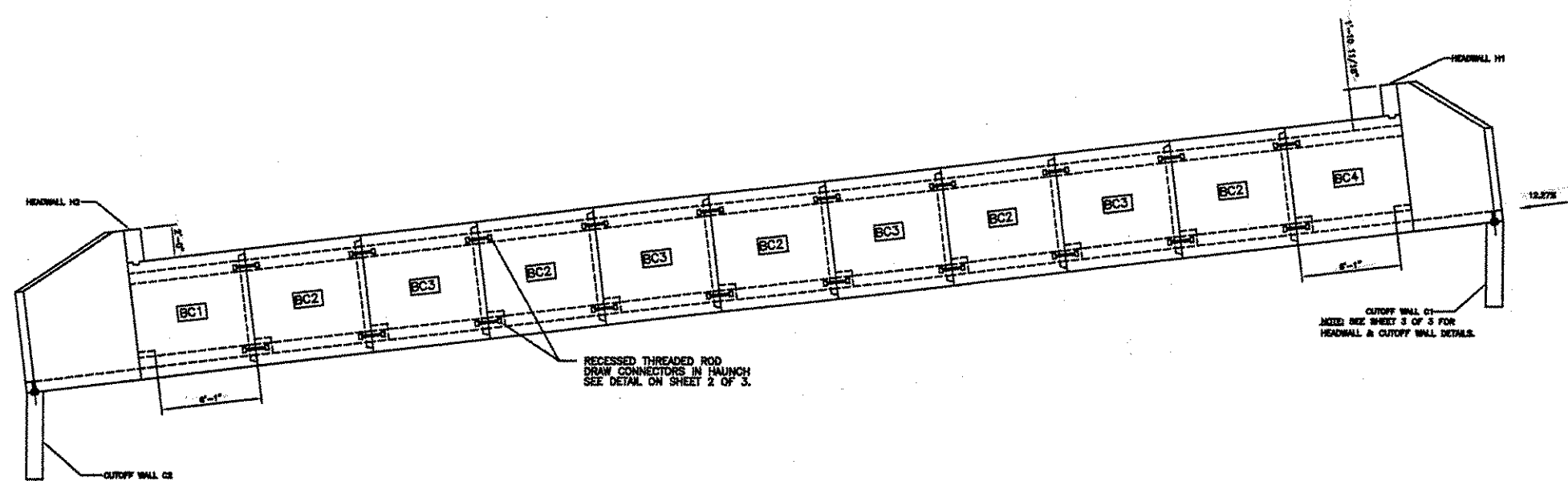


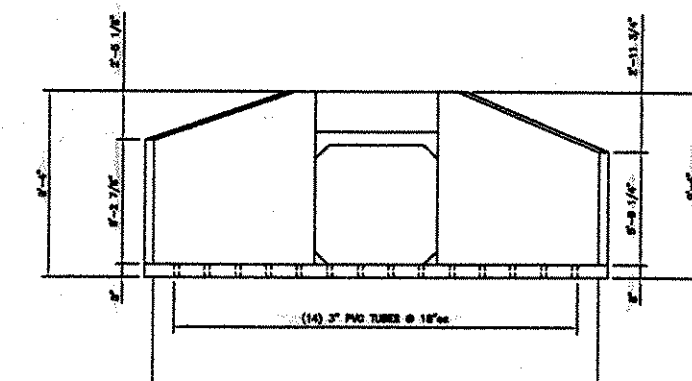
PLAN VIEW



INLET END VIEW



ELEVATION



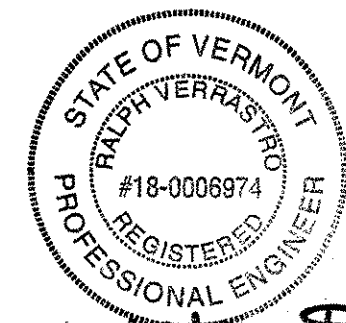
OUTLET END VIEW

GENERAL NOTES:

1. REINFORCING STEEL SHALL MEET ASTM A615, GRADE 60 SPECIFICATIONS
2. REINFORCING STEEL TO BE WIRE TIED AND HELD IN POSITION WITH PLASTIC CHAIRS AND REBAR SPACERS AS NEEDED.
3. EXPOSED EDGES OF FASCIA ENDS SHALL BE CHAMFERED 1" x 1".
4. WORKING TOLERANCES SHALL BE AS PER AASHTO M273-87.
5. CONCRETE COVER SHALL BE 1" UNLESS NOTED OTHERWISE.
6. THE G.C. SHALL APPLY A 2 FOOT WIDE STRIP OF (CLASS A) MEMBRANE WATERPROOFING AT EACH SIDE JOINT. THE MEMBRANE SHALL BE CENTERED ON THE JOINT AND SHALL RUN THE ENTIRE HEIGHT OF THE JOINT. THE ENTIRE TOP OF THE BOX CULVERT SHALL THEN BE COVERED WITH MEMBRANE. THE MEMBRANE SHEETS SHALL OVERLAP THE EDGES OF THE CULVERT BY 1 FOOT ON EACH SIDE AS SHOWN IN THE PLANS.

DESIGN NOTES:

1. ASSUMED EARTH COVER $\pm 12.5'$
2. CONCRETE STRENGTH TO BE: PRECAST TO BE 5000 PSI MIN. @ 28 DAYS WITH 5.0% - 9.0% ENTRAINED AIR CONTENT.
3. DESIGN LIVE LOADING = AASHTO HS-25 PLUS IMPACT.



Ralph Verrastro
2/21/01

V.A.O.T. RECEIVED
 OK'D BY *G. Ray* OK'D BY *mgl*
 3.21.01 3.29.01
 MAR 21 2001
 SUBMITTED APPROVED *V.A.S. NOTES*
 BY *mgl* DATE 3.29.01

TABLE OF UNITS			
MARK	QTY	LENGTH	WEIGHT (TONS)
BC1	1	7'-1"	9.92
BC2	5	7'-1"	9.92
BC3	4	7'-1"	9.92
BC4	1	7'-1"	9.92
INLET	1	5'-5"	8.29
OUTLET	1	6'-11"	12.9

<p>DELTA ENGINEERS, P.C. ENGINEERS • ARCHITECTS</p>	TOWN OF ST. ALBANS, VT		SHEET 1 OF 3
	6'-0" x 6'-0" x 78'-0" BR 87-3 NORTHBOUND		
CONTRACTOR: ENGINEER: <i>460</i>			
DWN BY: GAS CKD BY: RET		DWG ID: 1004-01 SCALE: NONE REV: 0 DATE: 2/9/01	