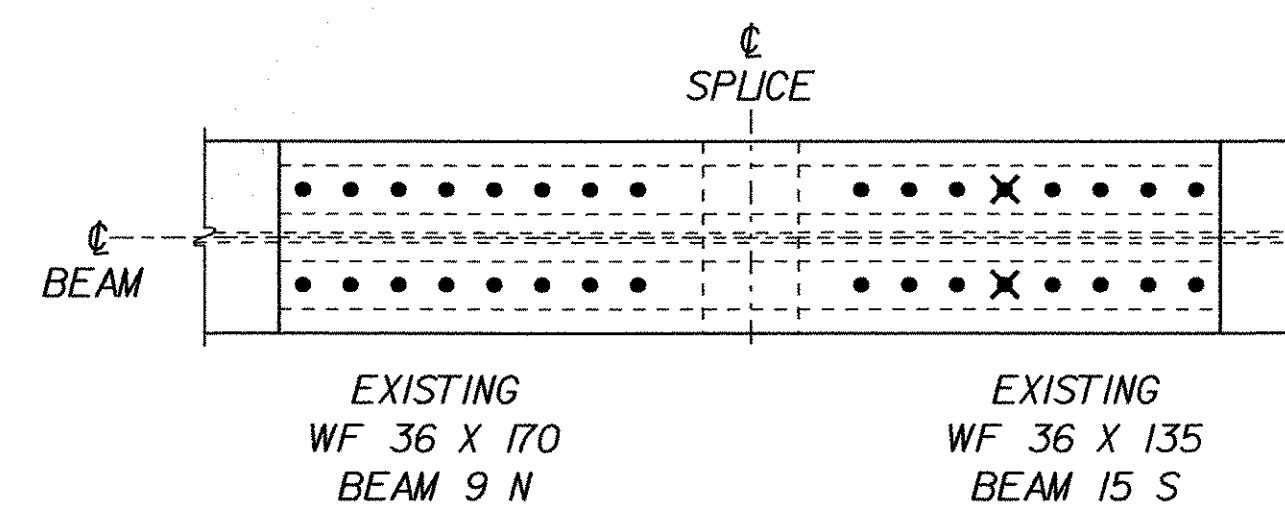
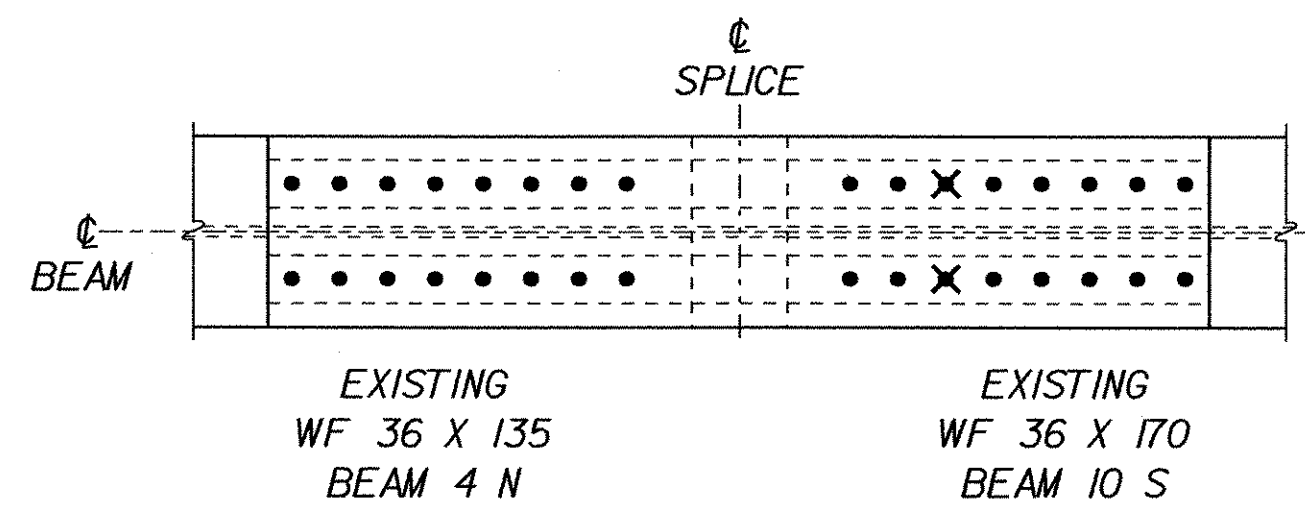


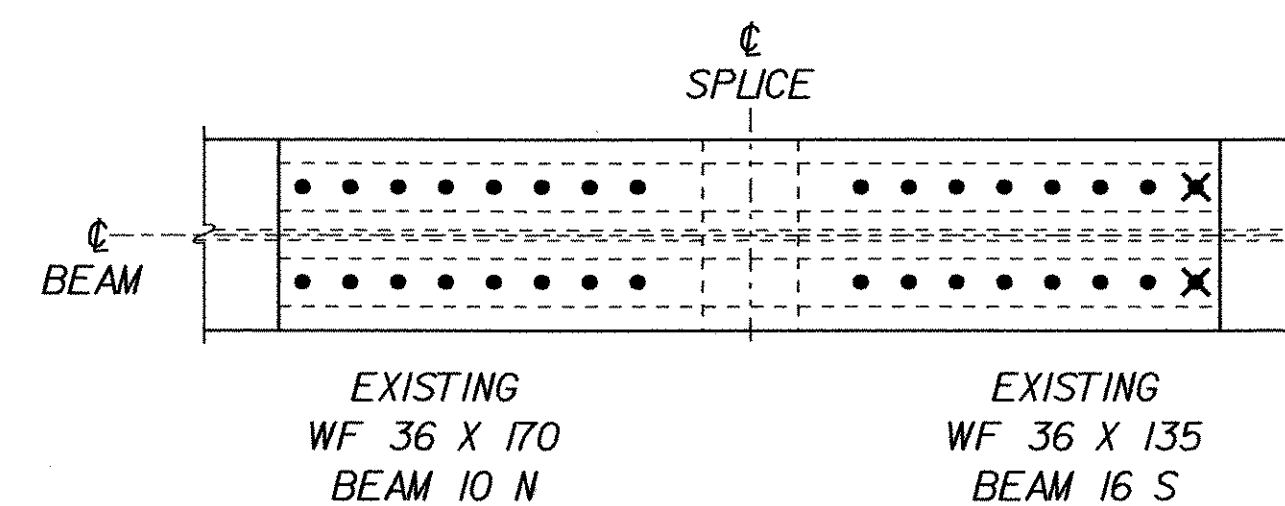
BEAM NO. 3 TO BEAM NO. 9



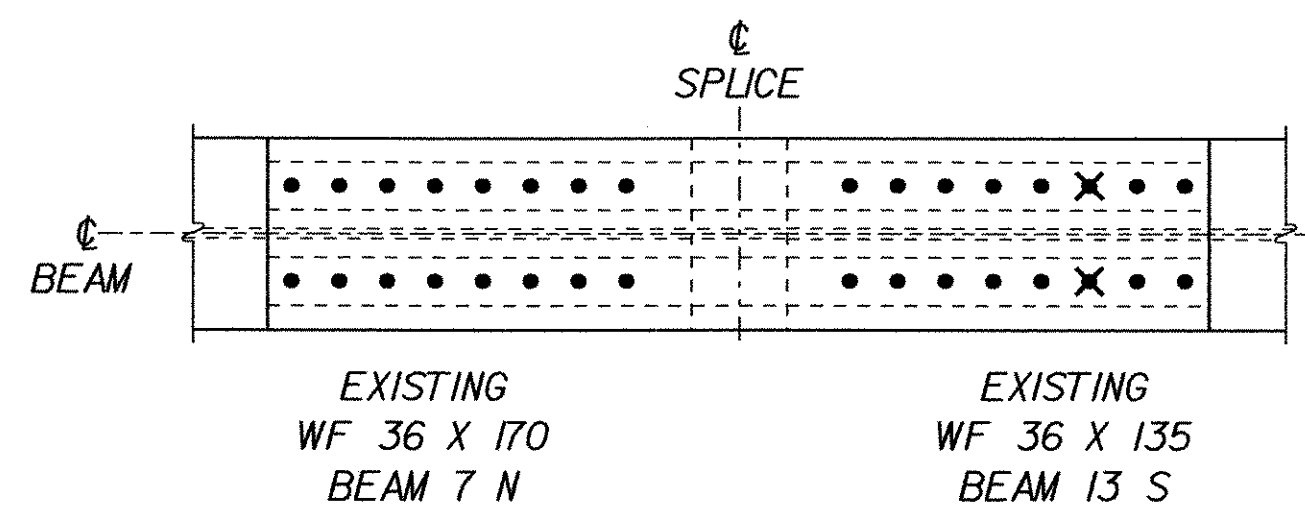
BEAM NO. 9 TO BEAM NO. 15



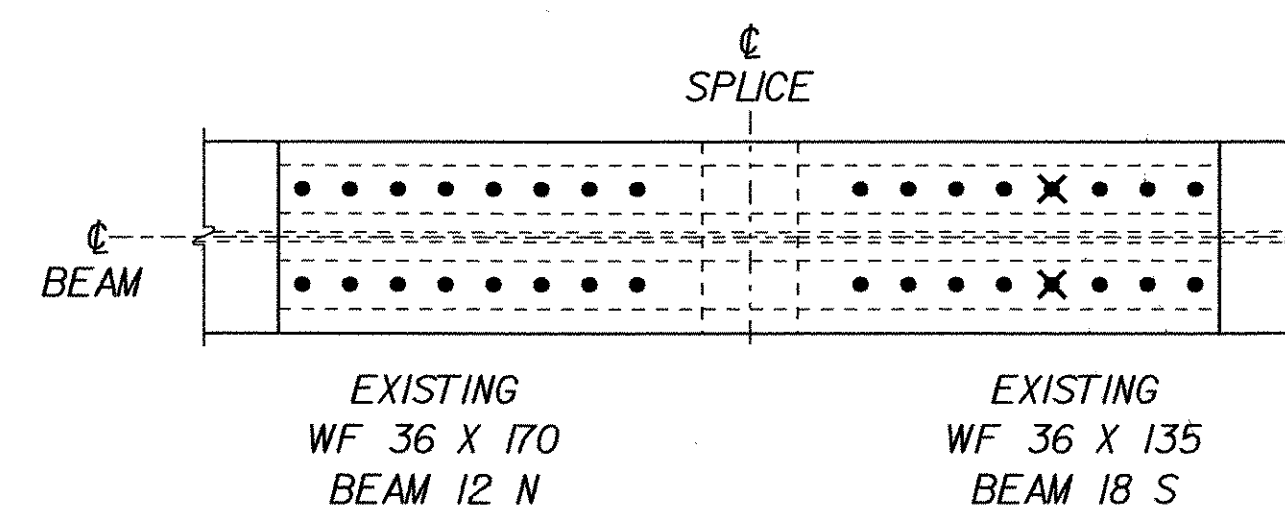
BEAM NO. 4 TO BEAM NO. 10



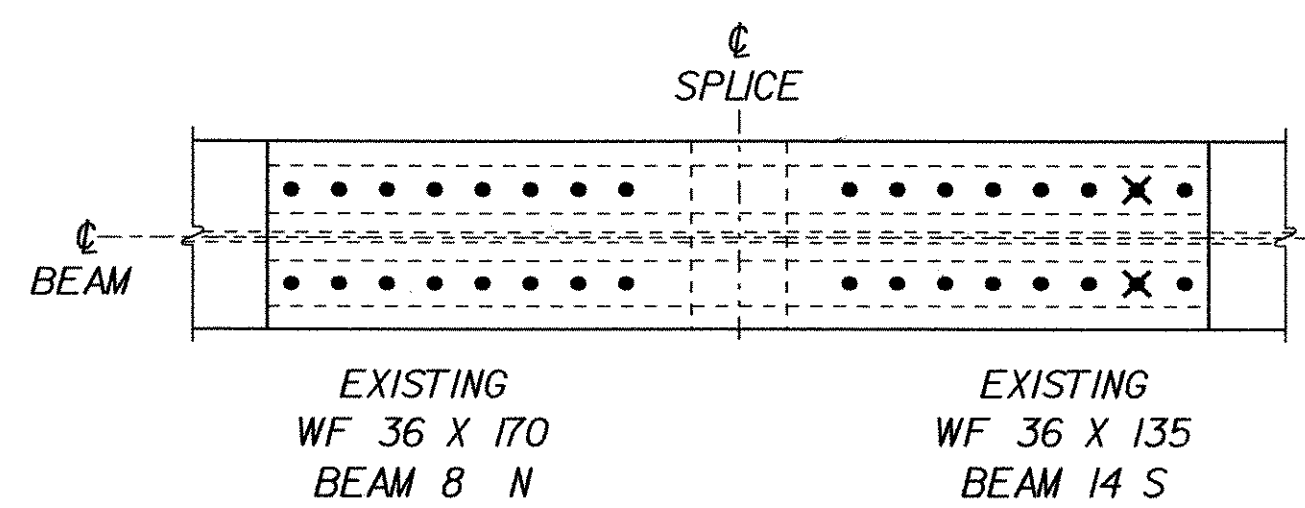
BEAM NO. 10 TO BEAM NO. 16



BEAM NO. 7 TO BEAM NO. 13



BEAM NO. 12 TO BEAM NO. 18



BEAM NO. 8 TO BEAM NO. 14

STRUCTURES COPY

SCALE: 1" = 1'-0"

STATE OF VERMONT AGENCY OF TRANSPORTATION	
Town Of FAIRFAX-FAIRFIELD-ST. ALBANS	Bridge No. 88S
Highway No. 1-89	Log Sta. Surv. Sta.
1-89 OVER ST. ALBANS SOUTH STATE HIGHWAY (EXIT 19)	
88S BEAM SPLICE MODIFICATIONS - TOP FLANGE	
Designed By M. LOZIER	Drawn By G. ROY
Checked By M. LOZIER Date 8/01	Bridge Design Supervisor R.R. WHITCOMB Date 8/01
PROJECT FAIRFAX-FAIRFIELD-ST. ALBANS	PROJECT NO. 1M 089 - 3 (27)
I.G.C. Info. 96a056Structures\sa056bwldgn	sa056fl11
Bridge Sheet No.	Sheet 1 of 2 455