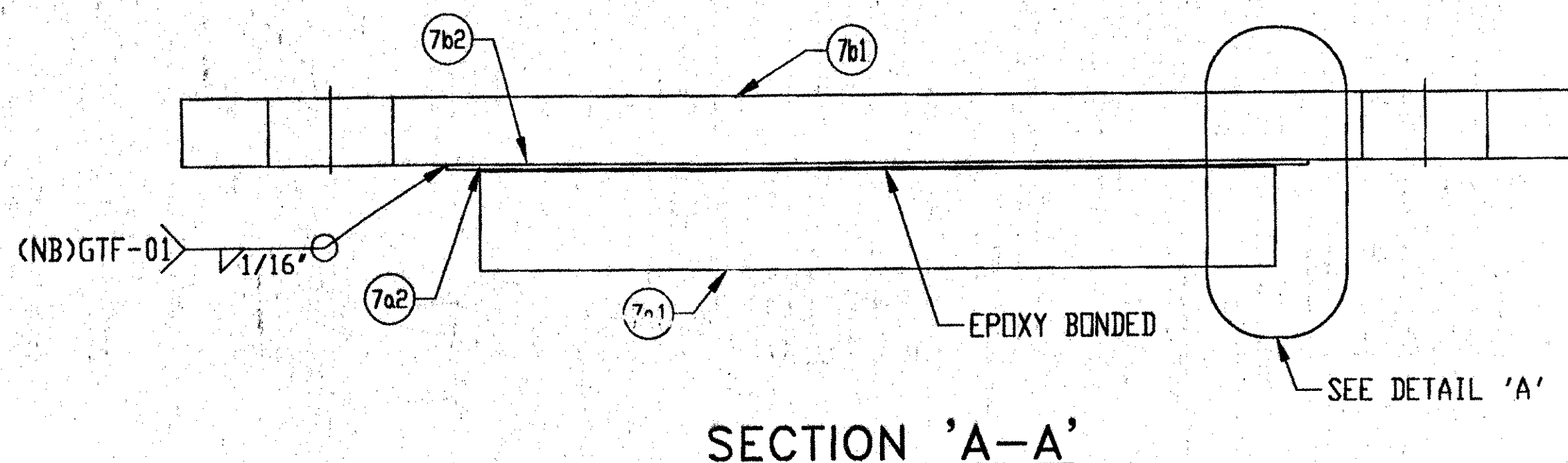
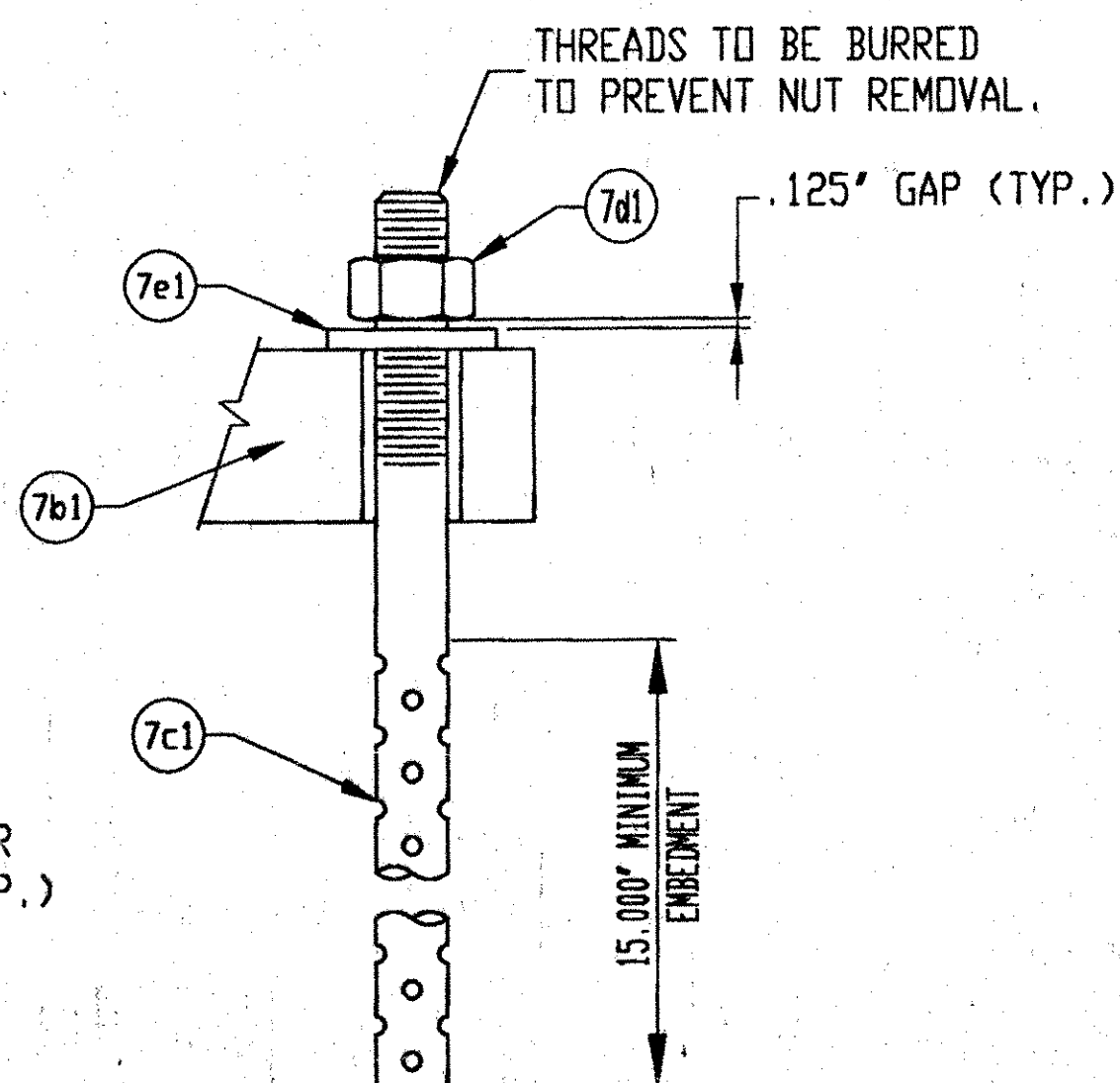


**PLAN VIEW**

MARK: 2201-1104-G  
 EXPANSION BEARING  
 (7) REQ'D @ ABUT. 8  
 (7) TOTAL REQ'D



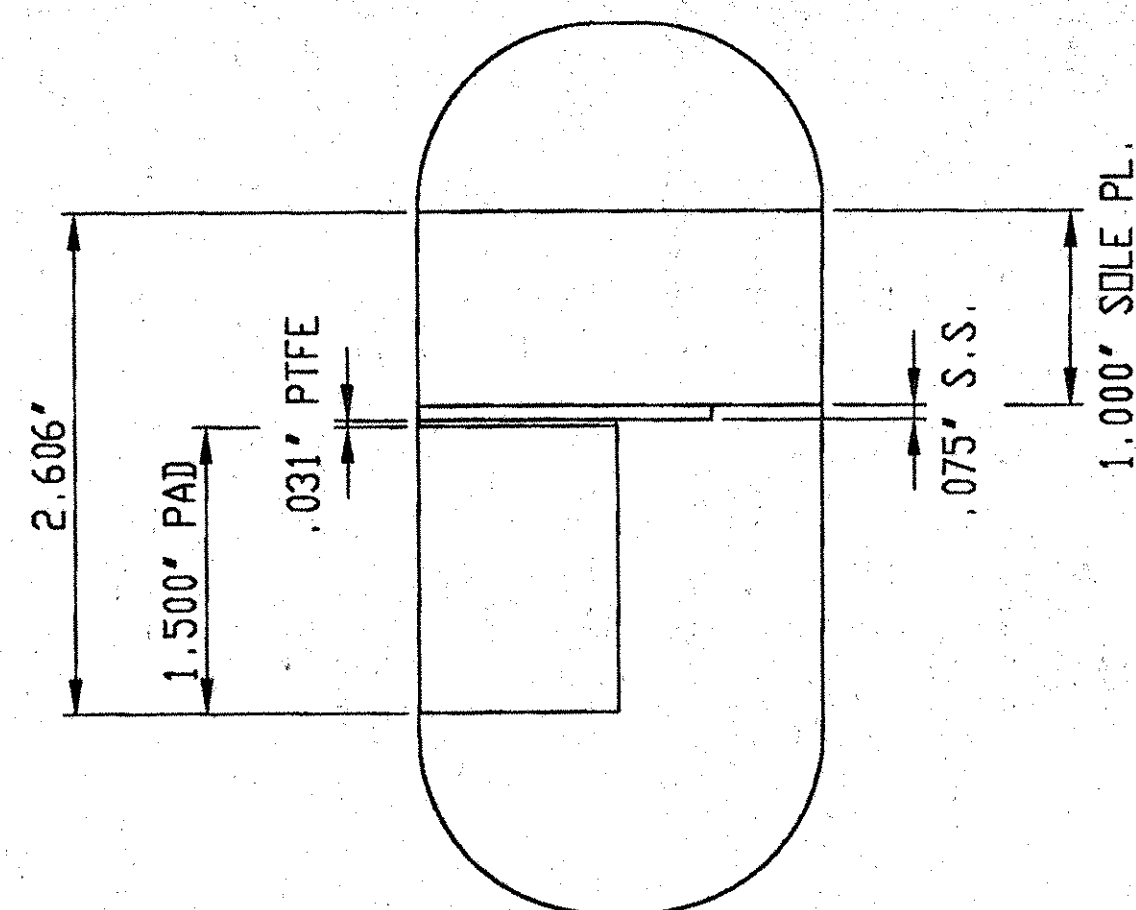
**SECTION 'A-A'**



**ANCHOR ASSEMBLY DETAIL**

SURFACES TO BE GALVANIZED OR METALIZED. PRIOR TO GALVANIZING OR METALIZING, ALL CORNERS AND EDGES OF STEEL PLATES, SHAPES, ETC., SHALL BE GROUND TO A 1/16 INCH RADIUS.

ALL MATERIALS AND CONSTRUCTION SHALL CONFORM TO STATE OF VERMONT AGENCY OF TRANSPORTATION STANDARD SPECIFICATIONS FOR CONSTRUCTION DATED 1990, AND ITS LATEST REVISIONS, AND THE AASHTO STANDARD SPECIFICATIONS FOR HIGHWAY BRIDGES, DATED 1996, AND ITS LATEST REVISIONS.

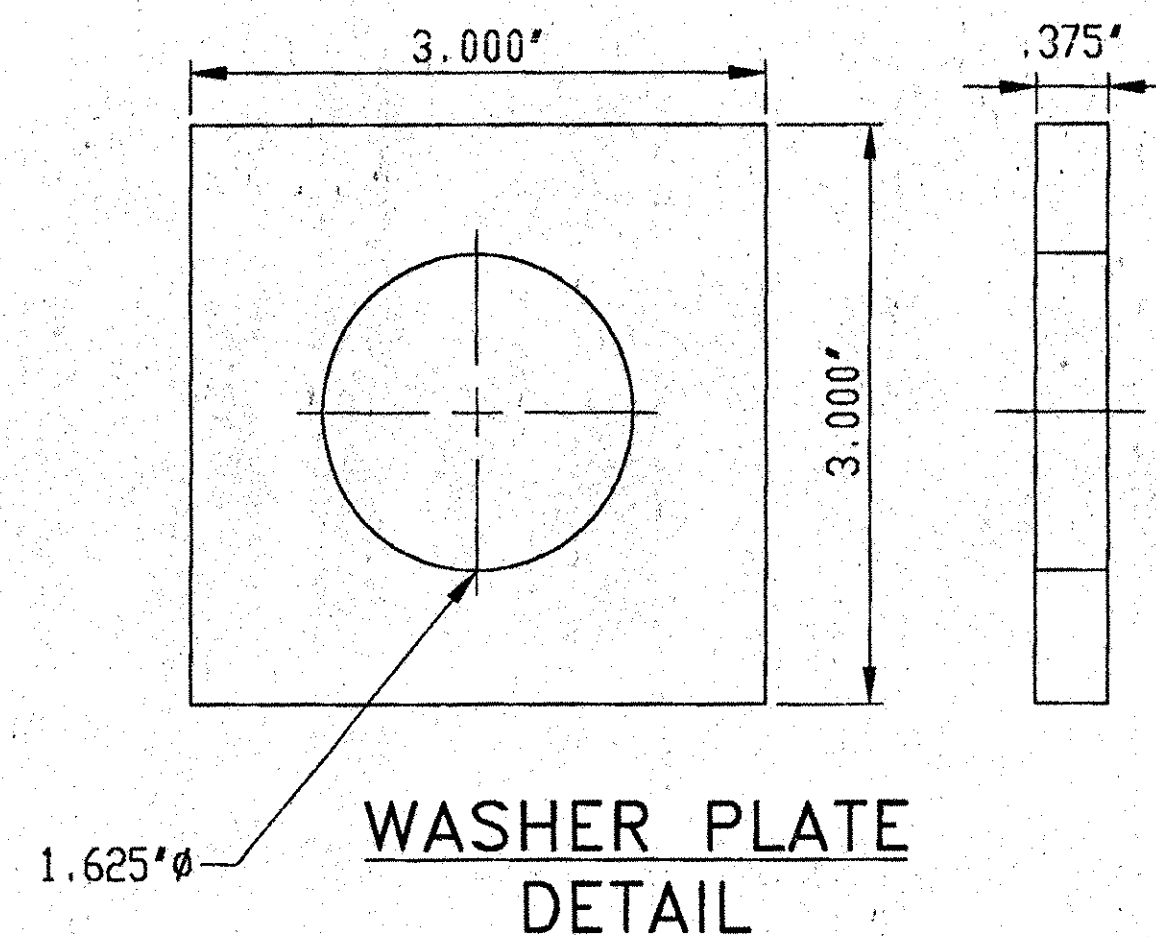


**DETAIL 'A'**

LINE	PART	MARK	NO. REQ'D	DESCRIPTION	REMARKS
1		7A	7	PREFORMED FABRIC PAD	
2	FABRIC PAD	7a1	7	1.500' X 8.000' X 12.000'	VERMONT SPEC. 731.01, AASHTO 18.4.10.1
3	PTFE	7a2	7	.0312" (MIN.) X 8.000" X 12.000"	ASTM D1457, EPOXY BONDED
4		7B	7	SOLE PLATE	
5	SOLE PLATE	7b1	7	1.000' X 13.000' X 21.000'	ASTM A709 GR. 36, GALVANIZED A123
6	STAINLESS STEEL	7b2	7	14 GA X 12.500" X 13.000"	ASTM A240, TYPE 304 #8 MIRROR FINISH
7		7C	14	SWEDGE ANCHOR ROD	
8	SWEDGE ANCHOR ROD	7c1	14	1.5Ø X 21.000" #14" THREADED, 15' MIN. SWEDGED	ASTM A 36 GALVANIZED A153
9		7D	14	HEAVY HEX NUT	
10	HEAVY HEX NUT	7d1	14	1.5Ø	ASTM A-307 GR. DH, GALVANIZED A153
11		7E	14	WASHER PLATE	
12	WASHER PLATE	7e1	14	.375" X 3.000" X 3.000" w/ 1.625" Ø HOLE	ASTM A 36, GALVANIZED A123

**GENERAL NOTES:**

- PAD AND MATERIALS SHALL CONFORM TO VERMONT DEPARTMENT OF TRANSPORTATION - DIVISION OF HIGHWAYS SPECIFICATIONS FOR 531 & 731. *AGENCI*  
STANDARD SPECIFICATIONS FOR CONSTRUCTION SECTIONS
- THESE SHOP DRAWINGS WERE PREPARED IN ACCORDANCE WITH THE CONTRACT PLANS AND SPECIFICATIONS. THE D.S. BROWN COMPANY DOES NOT ACCEPT LIABILITY FOR THE DESIGN OF THE PRODUCTS DETAILED IN THESE SHOP DRAWINGS.
- THE BEARINGS SHALL BE SUBJECTED TO RANDOM IN-HOUSE ELASTOMER TESTING AND RANDOM IN-HOUSE PROOF LOAD TESTING IN ACCORDANCE WITH AASHTO DIVISION I, SECTION 14 (METHOD "A") AND AASHTO DIVISION II, SECTION 18.
- THE D.S. BROWN COMPANY IS TO ONLY SUPPLY THE PARTS SHOWN ON THIS DRAWING.
- STAINLESS STEEL SLIDING SURFACE IN CONTACT WITH PTFE SHALL HAVE A NO. 8 MIRROR FINISH AND ALL OTHERS HAVE A 2B FINISH.



V.A.O.T. RECEIVED  
 OK'D BY *mgl* OK'D BY *...*  
 2-28-01  
 FEB 26 2001  
 RESUBMIT APPROVED *As noted*  
 BY *mgl* DATE 3-8-01

D.S. BROWN

2201-1106-7, 7 OF 7  
 SHEET 7 OF 7

	DATE	SYM	REVISION	DR	CK
THE D.S. BROWN COMPANY, INC. NORTH BALTIMORE, OHIO 45872-0158 U.S.A.					
F.A.P. NO.: - STATE PROJ. NO.: IM-089-3(27) BRIDGE NO: 88N DESIGNER: VT AGENCY OF TRANSPORTATION CONTRACTOR: J.A. McDONALD		SCALE: N/A DATE: 1/19/01 1-89 OVER ST. ALBANS STATE HIGHWAY (EXIT 19) FRANKLIN COUNTY VERMONT PREFORMED FABRIC BEARING		DRAWN BY: S. COPPUS 419 DRAWING NUMBER 2201-1106-07	