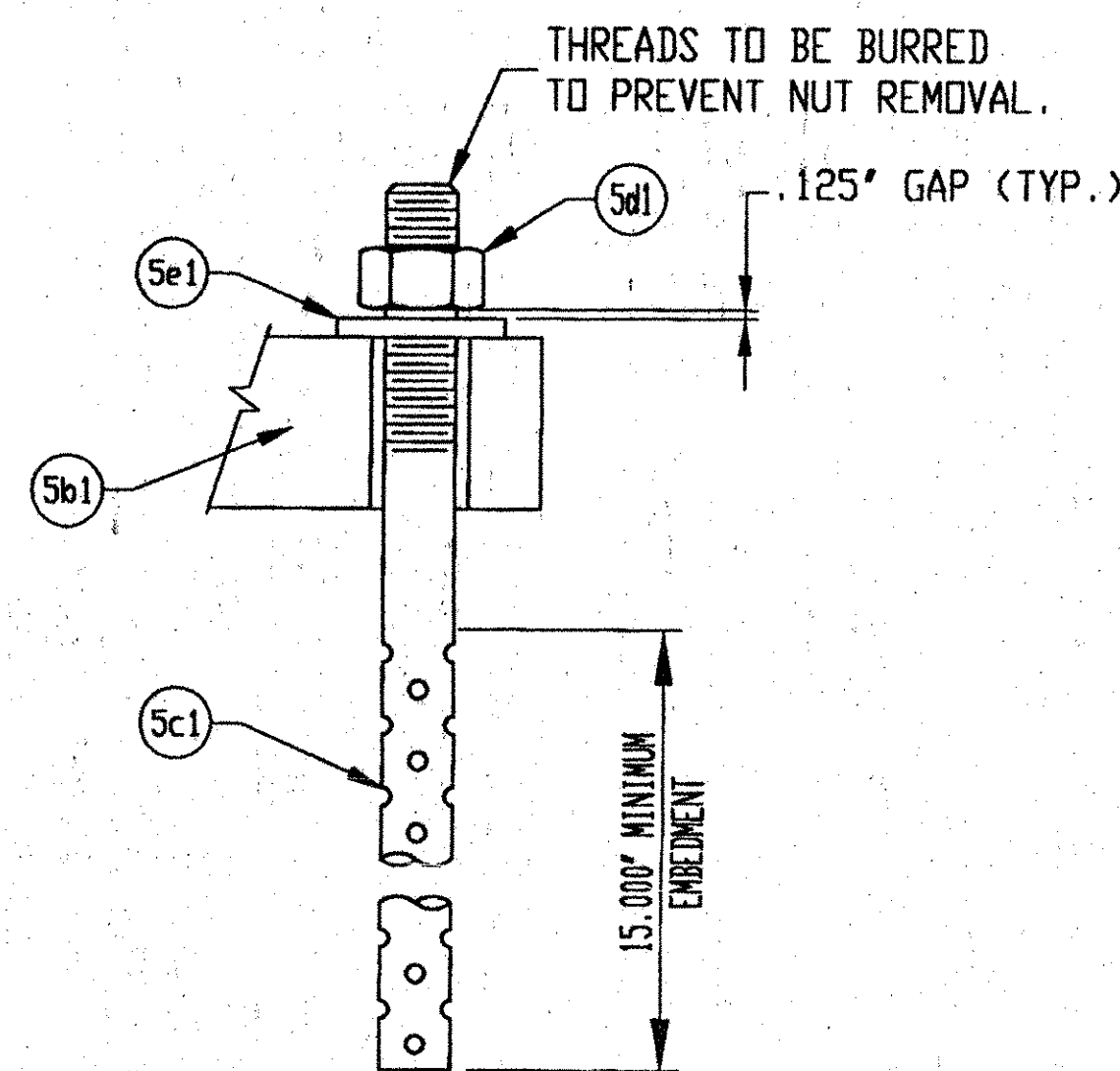
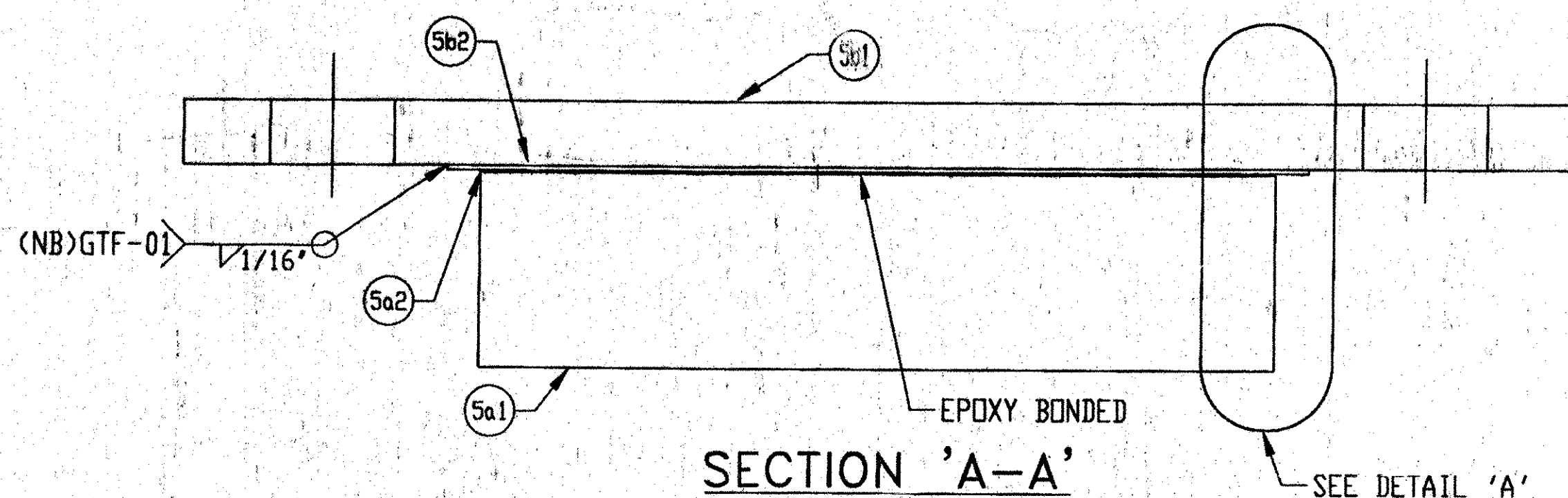


PLAN VIEW

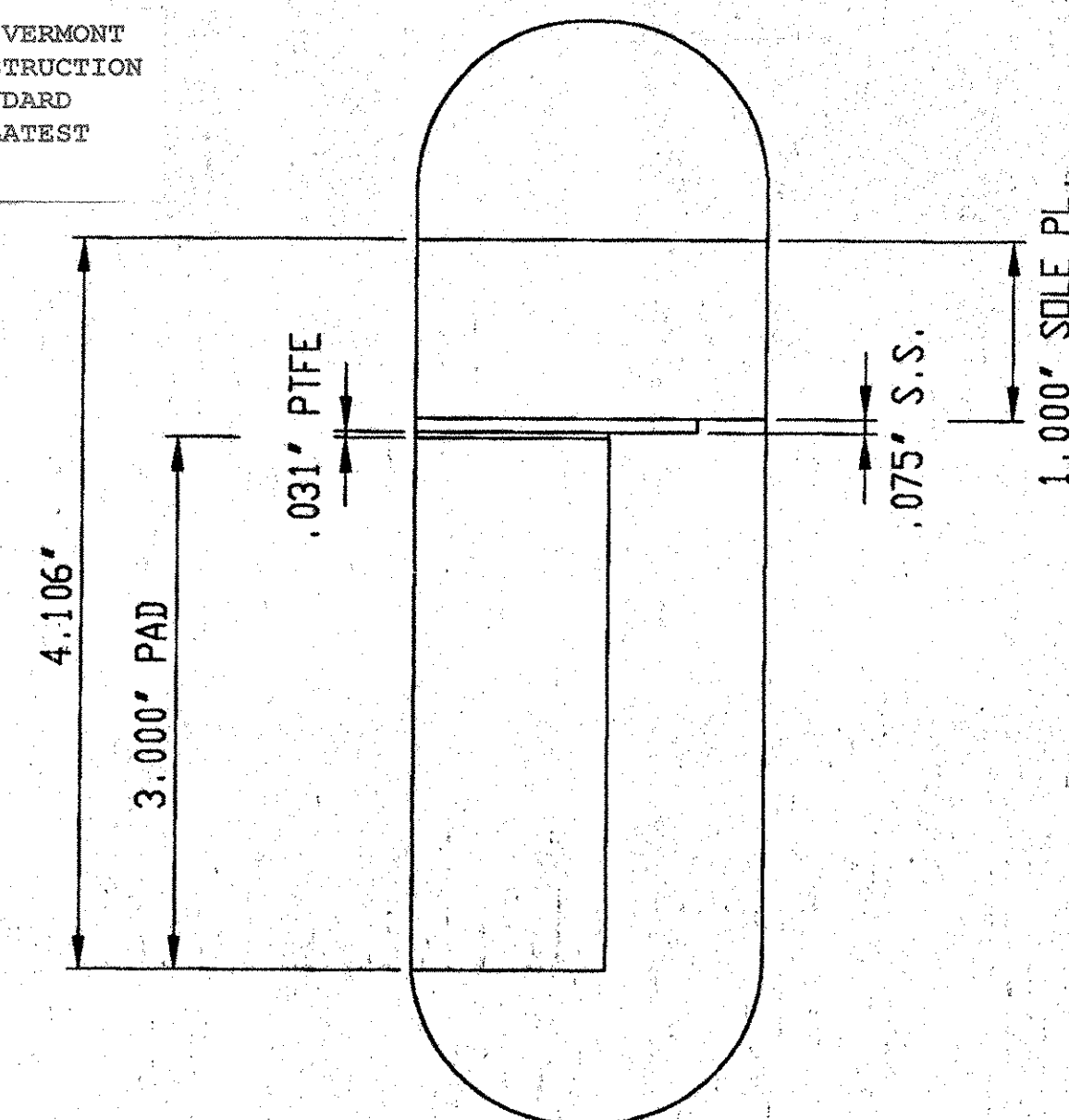
MARK: 2201-1104-E
EXPANSION BEARING
SOUTHBOUND BRIDGE:
(6) REQ'D @ PIER 1
(6) REQ'D @ PIER 2
NORTHBOUND BRIDGE:
(7) REQ'D @ PIER 3
(7) REQ'D @ PIER 4
(26) TOTAL REQ'D

ALL MATERIALS AND CONSTRUCTION SHALL CONFORM TO STATE OF VERMONT AGENCY OF TRANSPORTATION STANDARD SPECIFICATIONS FOR CONSTRUCTION DATED 1990, AND ITS LATEST REVISIONS, AND THE AASHTO STANDARD SPECIFICATIONS FOR HIGHWAY BRIDGES, DATED 1996, AND ITS LATEST REVISIONS.



ANCHOR ASSEMBLY DETAIL

SURFACES TO BE GALVANIZED OR METALIZED. PRIOR TO GALVANIZING OR METALIZING, ALL CORNERS AND EDGES OF STEEL PLATES, SHAPES, ETC., SHALL BE GROUND TO A 1/16 INCH RADIUS.

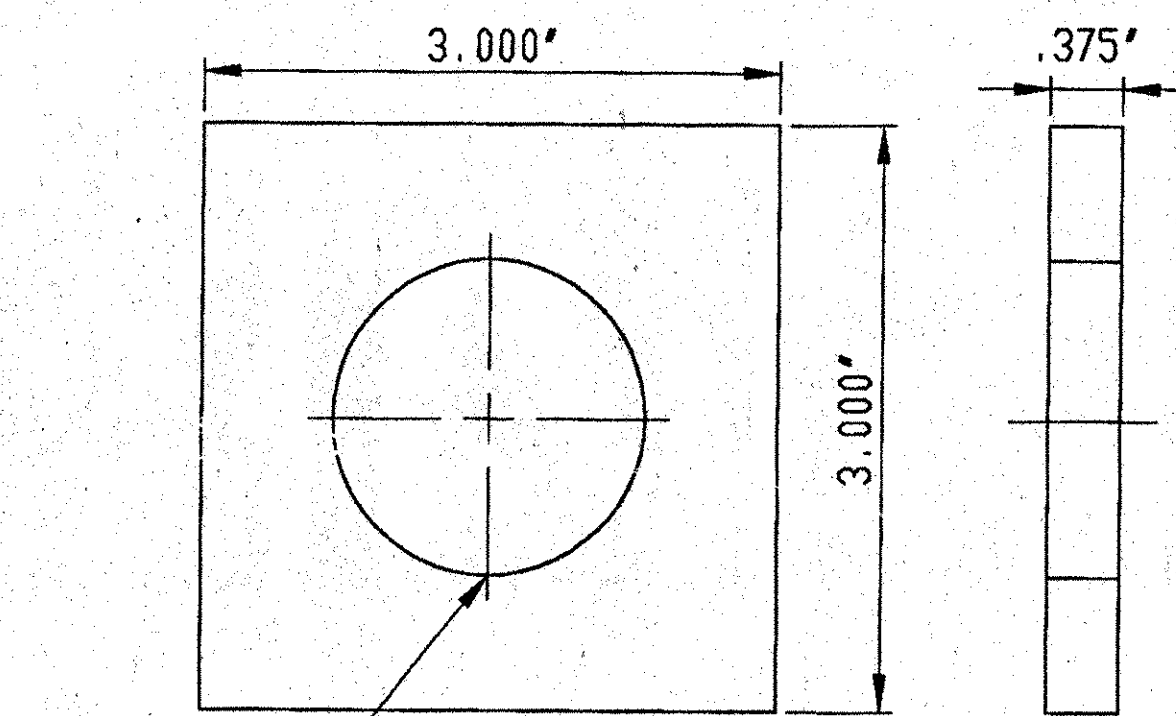


DETAIL 'A'

LINE	PART	MARK	NO. REQ'D	DESCRIPTION	REMARKS
1		5A	26	PREFORMED FABRIC PAD	
2	FABRIC PAD	5a1	26	3.000" X 15.000" X 12.000"	50+5 DUREMETER, NEOPRENE
3	PTFE	5a2	26	.0312" (MIN.) X 15.000" X 12.000"	ASTM D1457, EPOXY BONDED
4		5B	26	SOLE PLATE	
5	SOLE PLATE	5b1	26	1.000" X 20.000" X 21.000"	ASTM A709 GR. 36, GALVANIZED A123
6	STAINLESS STEEL	5b2	26	14 GA X 19.500" X 13.000"	ASTM A240, TYPE 304 #8 MIRROR FINISH
7		5C	32	SWEDGE ANCHOR ROD	
8	SWEDGE ANCHOR ROD	5c1	32	1.50" X 21.000" MIN. W/4" THREADED, 15" MIN. SWEDGED	ASTM A 36, GALVANIZED A153
9		5D	32	HEAVY HEX NUT	
10	HEAVY HEX NUT	5d1	32	1.50"	ASTM A307 GR. DH, GALVANIZED A153
11		5E	32	WASHER PLATE	
12	WASHER PLATE	5e1	32	.375" X 3.000" X 3.000" W/ 1.625" HOLE	ASTM A36, GALVANIZED A123

GENERAL NOTES:

- PAD AND MATERIALS SHALL CONFORM TO VERMONT DEPARTMENT OF TRANSPORTATION - DIVISION OF HIGHWAYS SPECIFICATIONS FOR 531 & 731. AGENCY STANDARD SPECIFICATIONS FOR CONSTRUCTION SECTIONS
- THESE SHOP DRAWINGS WERE PREPARED IN ACCORDANCE WITH THE CONTRACT PLANS AND SPECIFICATIONS. THE D.S. BROWN COMPANY DOES NOT ACCEPT LIABILITY FOR THE DESIGN OF THE PRODUCTS DETAILED IN THESE SHOP DRAWINGS.
- THE BEARINGS SHALL BE SUBJECTED TO RANDOM IN-HOUSE ELASTOMER TESTING AND RANDOM IN-HOUSE PROOF LOAD TESTING IN ACCORDANCE WITH AASHTO DIVISION I, SECTION 14 (METHOD "A") AND AASHTO DIVISION II, SECTION 18.
- THE D.S. BROWN COMPANY IS TO ONLY SUPPLY THE PARTS SHOWN ON THIS DRAWING.
- STAINLESS STEEL SIDING SURFACE IN CONTACT WITH PTFE SHALL HAVE A NO. 8 MIRROR FINISH AND ALL OTHERS SHALL HAVE A 2B FINISH.



WASHER PLATE DETAIL

V.A.O.T. RECEIVED
CHK'D BY: mgl
2-28-01
FEB 26 2001
RESUBMIT BY: mgl
APPROVED DATE: 3.8.01

D.S. BROWN

2201-1106-5, 26 OF 26
SHEET 5 OF 7

	DATE	SYM	REVISION	DR	CK
F.A.P. NO.: - STATE PROJ. NO.: IM-089-3(27) BRIDGE NO.: 885-88 N&S DESIGNER: VT AGENCY OF TRANSPORTATION CONTRACTOR: J.A. McDONALD					
THE D.S. BROWN COMPANY, INC. NORTH BALTIMORE, OHIO 45872-0158 U.S.A. SCALE: N/A DATE: 1/19/01 1-89 OVER ST. ALBANS S. STATE HIGHWAY (EXIT 19) FRANKLIN COUNTY VERMONT PREFORMED FABRIC BEARING					
					DRAWING NUMBER 2201-1106-05