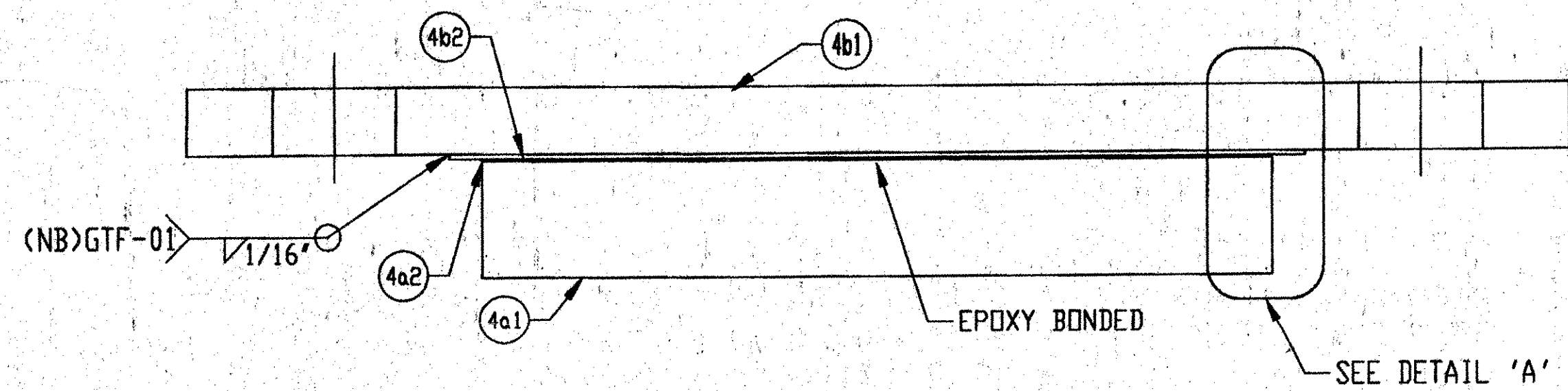
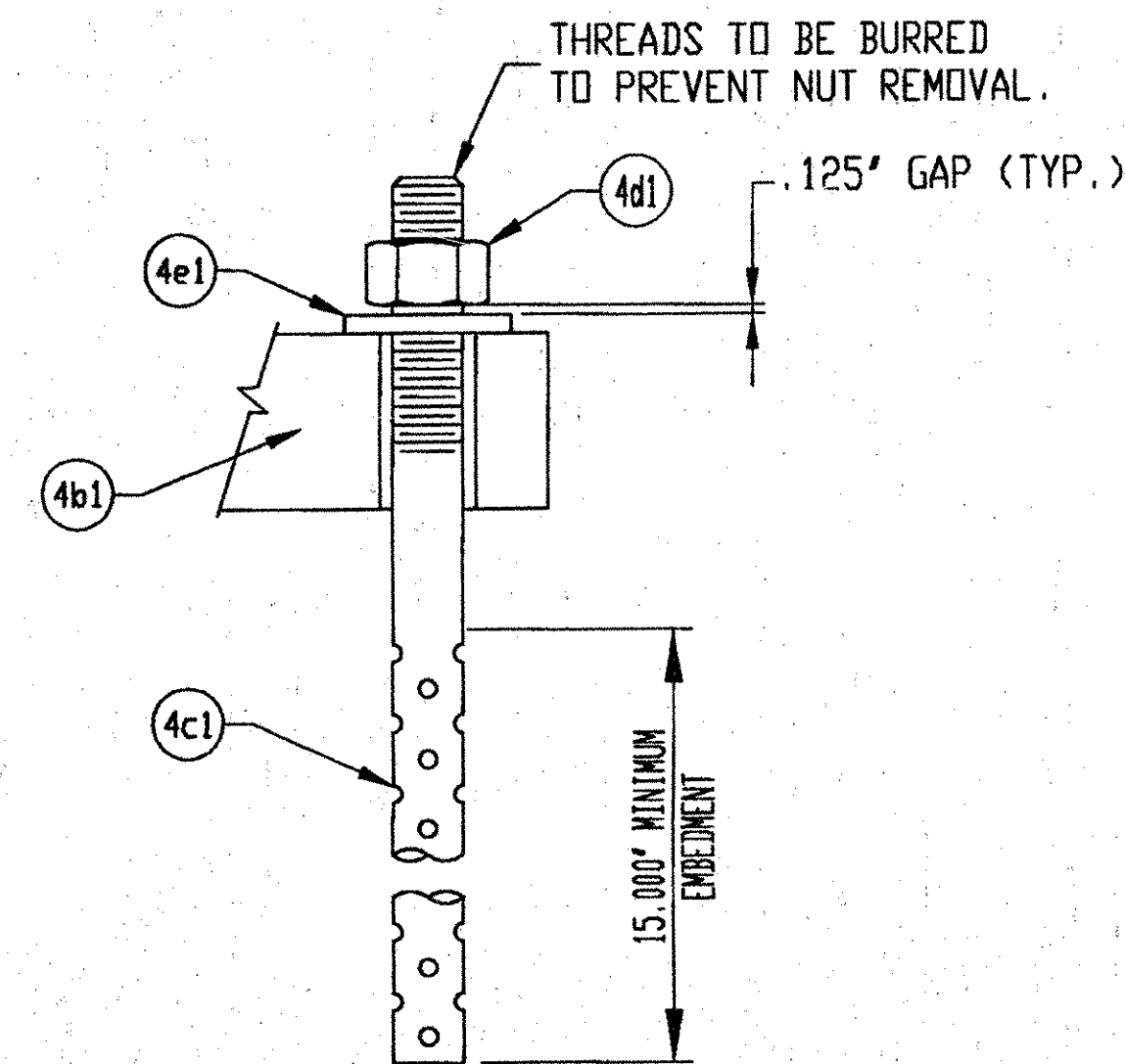


PLAN VIEW
 MARK: 2201-1104-D
 EXPANSION BEARING
 (6) REQ'D @ ABUT. 6
 (6) TOTAL REQ'D



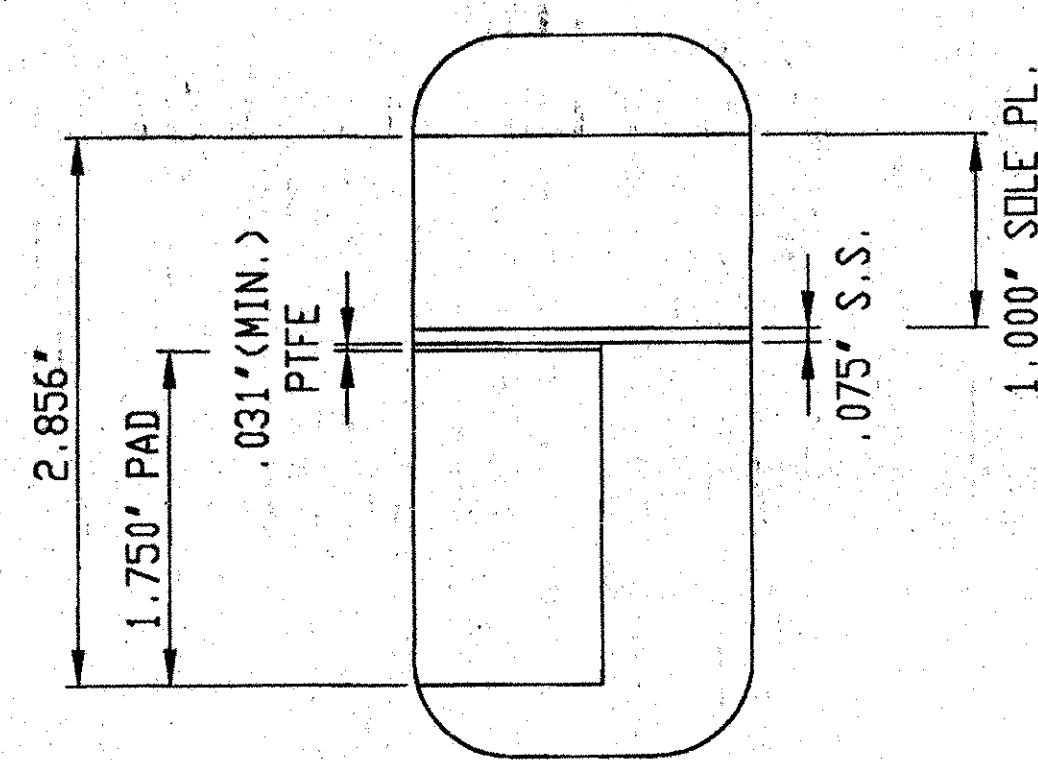
SECTION 'A-A'



ANCHOR ASSEMBLY DETAIL

SURFACES TO BE GALVANIZED OR METALIZED. PRIOR TO GALVANIZING OR METALIZING, ALL CORNERS AND EDGES OF STEEL PLATES, SHAPES, ETC., SHALL BE GROUND TO A 1/16 INCH RADIUS.

ALL MATERIALS AND CONSTRUCTION SHALL CONFORM TO STATE OF VERMONT AGENCY OF TRANSPORTATION STANDARD SPECIFICATIONS FOR CONSTRUCTION DATED 1990, AND ITS LATEST REVISIONS, AND THE AASHTO STANDARD SPECIFICATIONS FOR HIGHWAY BRIDGES, DATED 1996, AND ITS LATEST REVISIONS.

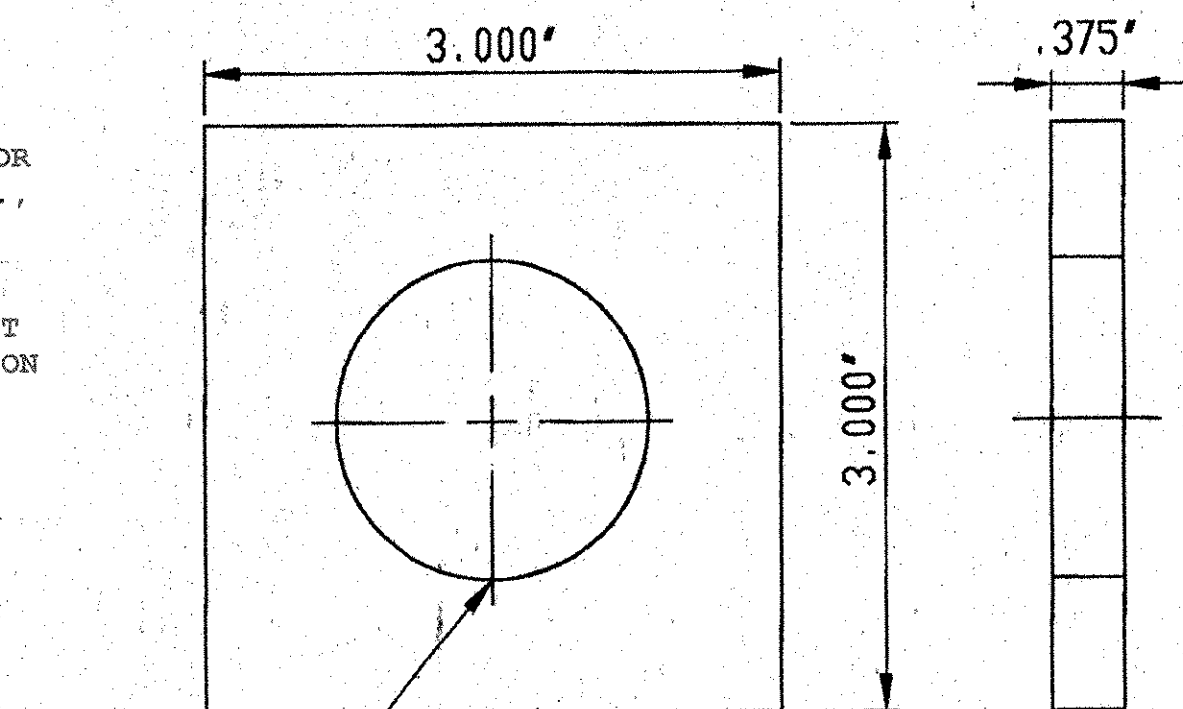


DETAIL 'A'

LINE	PART	MARK	NO. REQ'D	DESCRIPTION	REMARKS
1		4A	6	PREFORMED FABRIC PAD	
2	FABRIC PAD	4a1	6	1.750" X 9.000" X 12.000"	VERMONT SPEC. 731.01, AASHTO 18.4.10.1
3	PTFE	4a2	6	.0312" X 9.000" X 12.000"	ASTM D1457, EPOXY BONDED
4		4B	6	SOLE PLATE	
5	SOLE PLATE	4b1	6	1.000" X 15.000" X 21.000"	ASTM A709 GR. 36, GALVANIZED A123
6	STAINLESS STEEL	4b2	6	14 GA X 13.000" X 14.500"	ASTM A240, TYPE 304 #8 MIRROR FINISH
7		4C	12	SWEDGE ANCHOR ROD	
8	SWEDGE ANCHOR ROD	4c1	12	1.58" X 21.000" #4" THREADED, 15" MIN. SWEDGED	ASTM A 36 GALVANIZED A153
9		4D	12	HEAVY HEX NUT	
10	HEAVY HEX NUT	4d1	12	1.58"	ASTM A-307 GR. DH, GALVANIZED A153
11		4E	12	WASHER PLATE	
12	WASHER PLATE	4e1	12	.375" X 3.000" X 3.000" w/ 1.625" HOLE	ASTM A 36, GALVANIZED A123

GENERAL NOTES:

- PAD AND MATERIALS SHALL CONFORM TO VERMONT ^{AGENCY} DEPARTMENT OF TRANSPORTATION—DIVISION OF HIGHWAYS SPECIFICATIONS FOR 531 & 731. _{STANDARD SPECIFICATIONS FOR CONSTRUCTION SECTIONS}
- THESE SHOP DRAWINGS WERE PREPARED IN ACCORDANCE WITH THE CONTRACT PLANS AND SPECIFICATIONS. THE D.S. BROWN COMPANY DOES NOT ACCEPT LIABILITY FOR THE DESIGN OF THE PRODUCTS DETAILED IN THESE SHOP DRAWINGS.
- THE BEARINGS SHALL BE SUBJECTED TO RANDOM IN-HOUSE ELASTOMER TESTING AND RANDOM IN-HOUSE PROOF LOAD TESTING IN ACCORDANCE WITH AASHTO DIVISION I, SECTION 14 (METHOD "A") AND AASHTO DIVISION II, SECTION 18.
- THE D.S. BROWN COMPANY IS TO ONLY SUPPLY THE PARTS SHOWN ON THIS DRAWING.
- STAINLESS STEEL SLIDING SURFACE IN CONTACT WITH PTFE SHALL HAVE A NO. 8 MIRROR FINISH AND ALL OTHERS SHALL HAVE A 2B FINISH.



WASHER PLATE DETAIL

V.A.O.T. RECEIVED
 CK'D BY *mgl* CK'D BY *2/28/01*
 FEB 26 2001
 RESUBMIT APPROVED *AS NOTED*
 BY *mgl* DATE 3-3-01

D.S. BROWN 2201-1106-4, 6 OF 6 SHEET 4 OF 7

	DATE	SYM	REVISION	DR	CK
THE D.S. BROWN COMPANY, INC. NORTH BALTIMORE, OHIO 45872-0158 U.S.A.					
F.A.P. NO.: -	STATE PROJ. NO.: IM-089-3(27)		SCALE: N/A	CHECKED BY: <i>E. Kelly</i>	DRAWN BY: B. COPPUS
BRIDGE NO.: 88S	DESIGNER: VT AGENCY OF TRANSPORTATION		DATE: 1/19/01	1-89 OVER ST. ALBANS S. (STATE HIGHWAY (EXIT 19) FRANKLIN COUNTY VERMONT)	
CONTRACTOR: J.A. MCDONLAD	DRAWING NUMBER: 2201-1106-04		PREFORMED FABRIC BEARING		