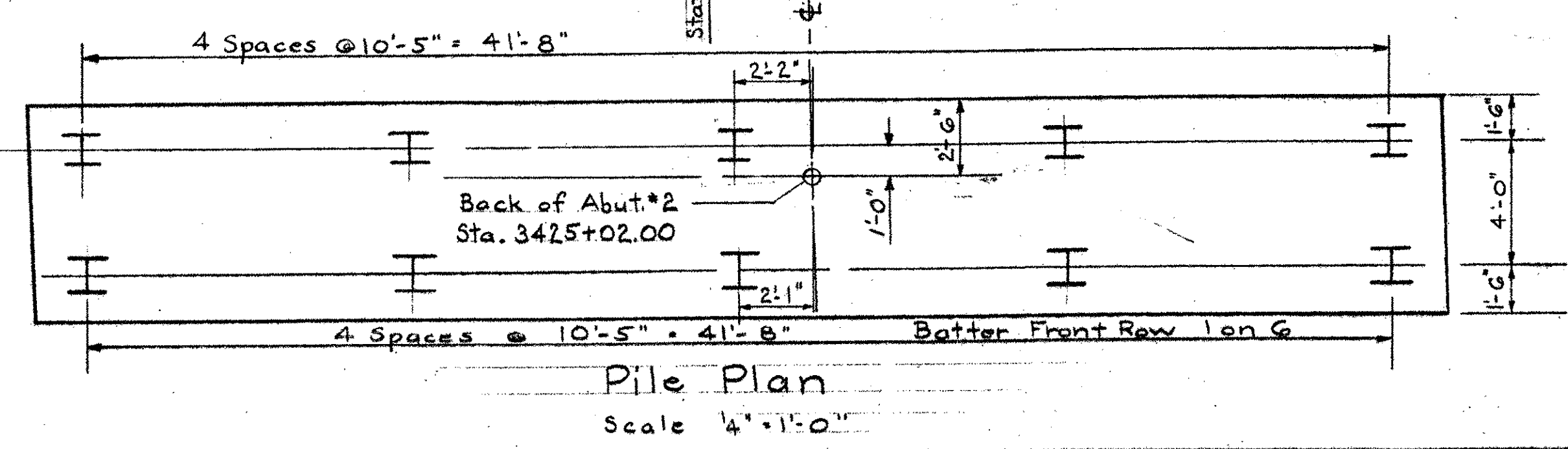
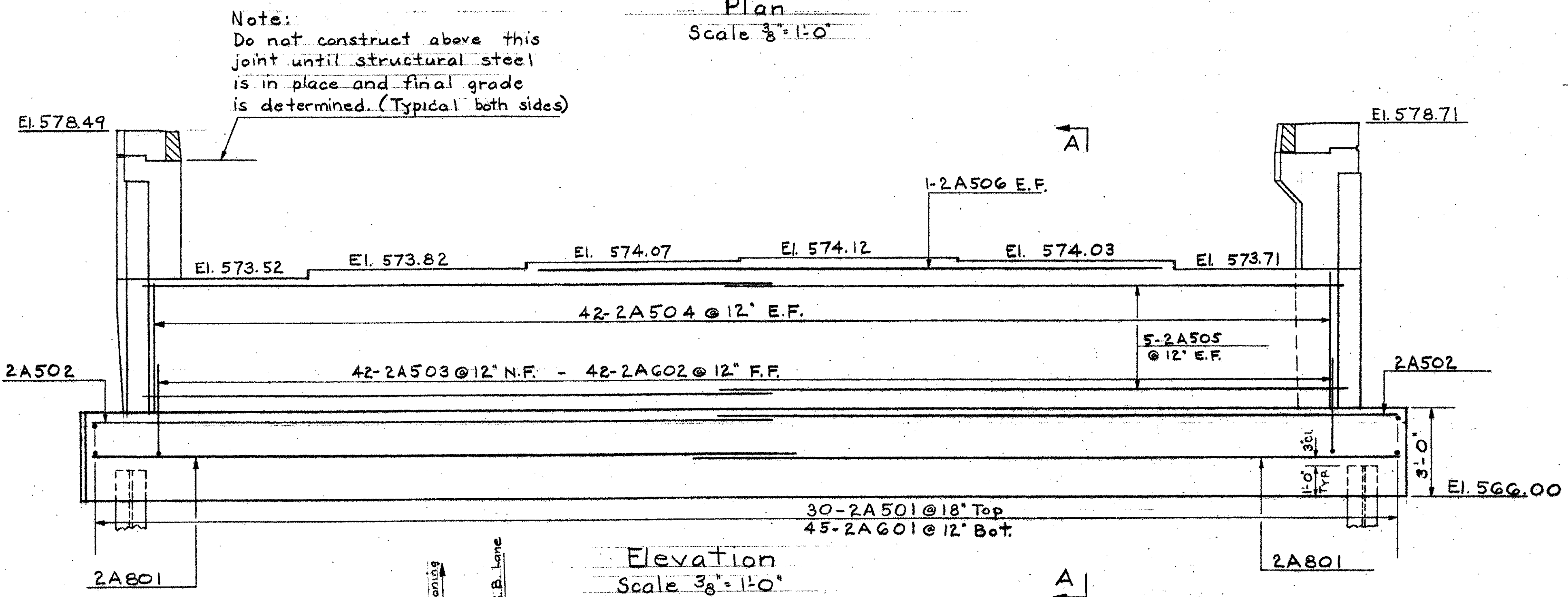
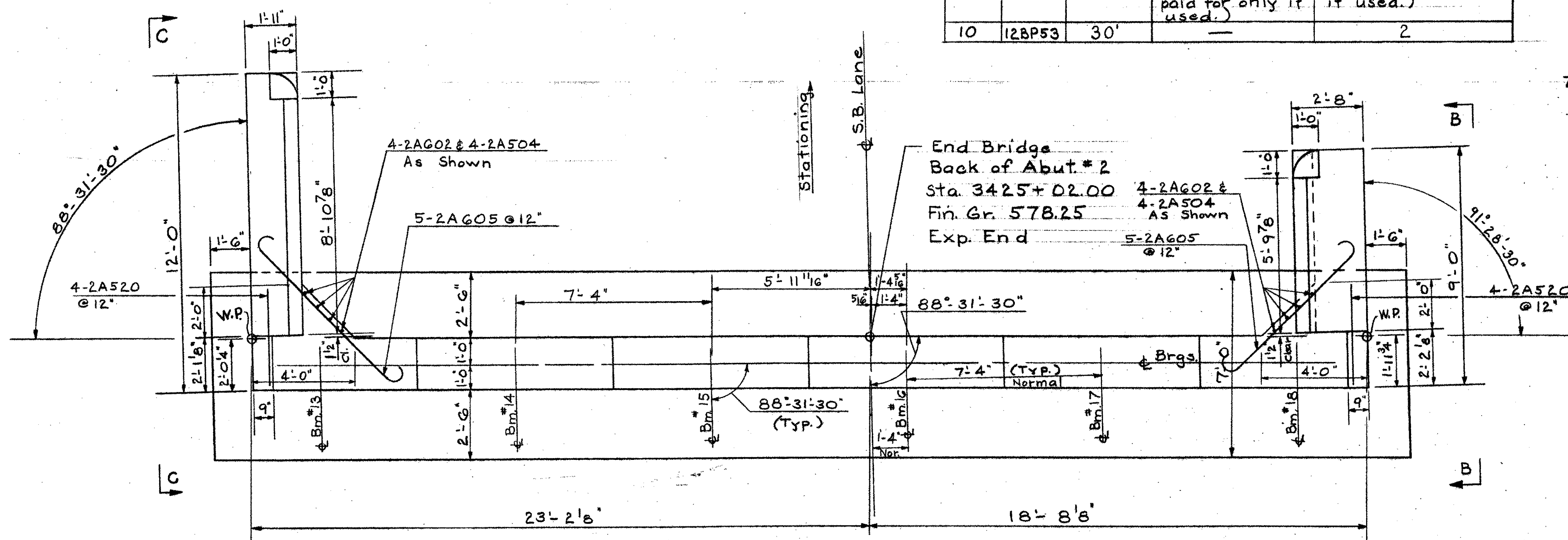
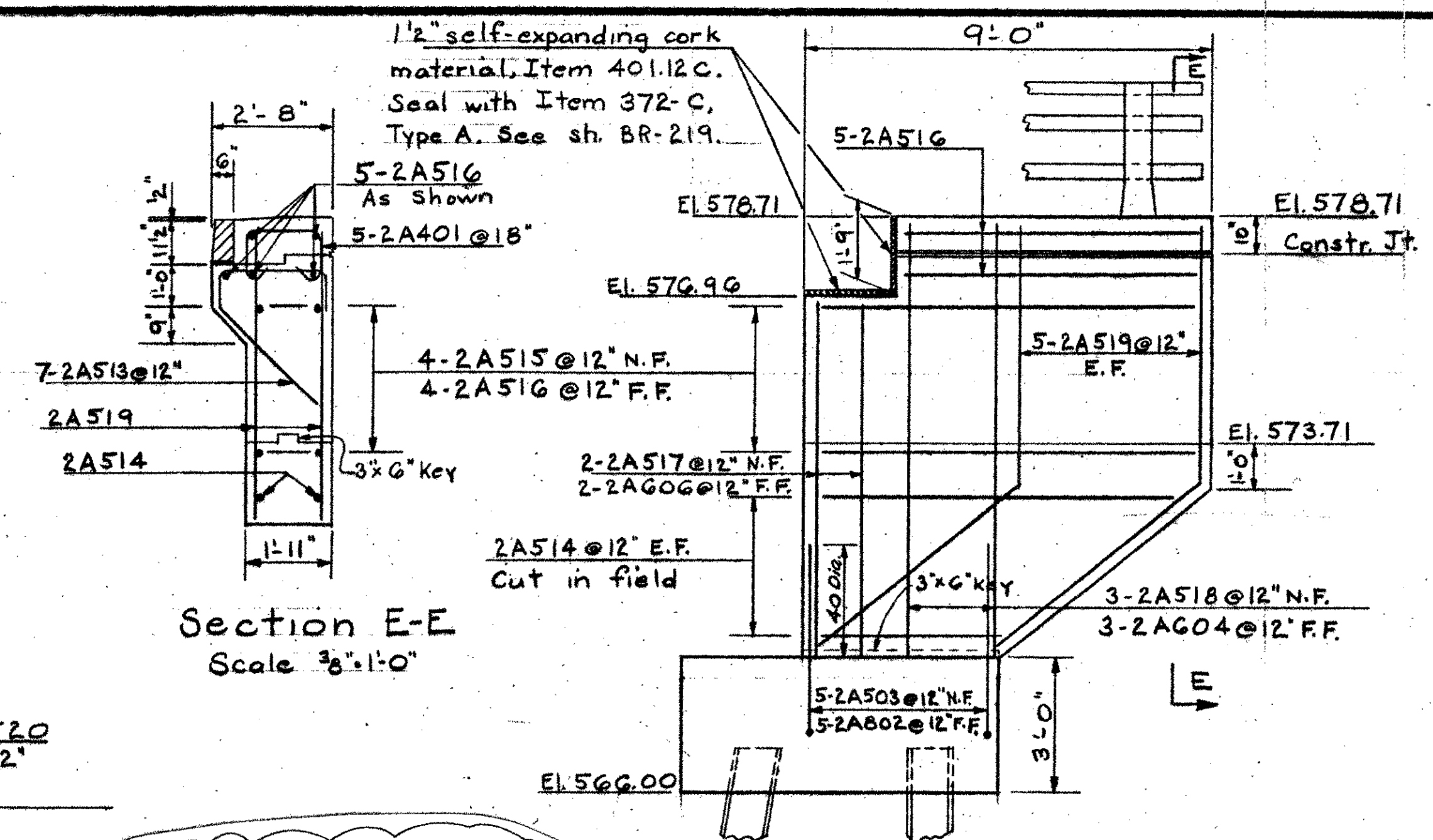


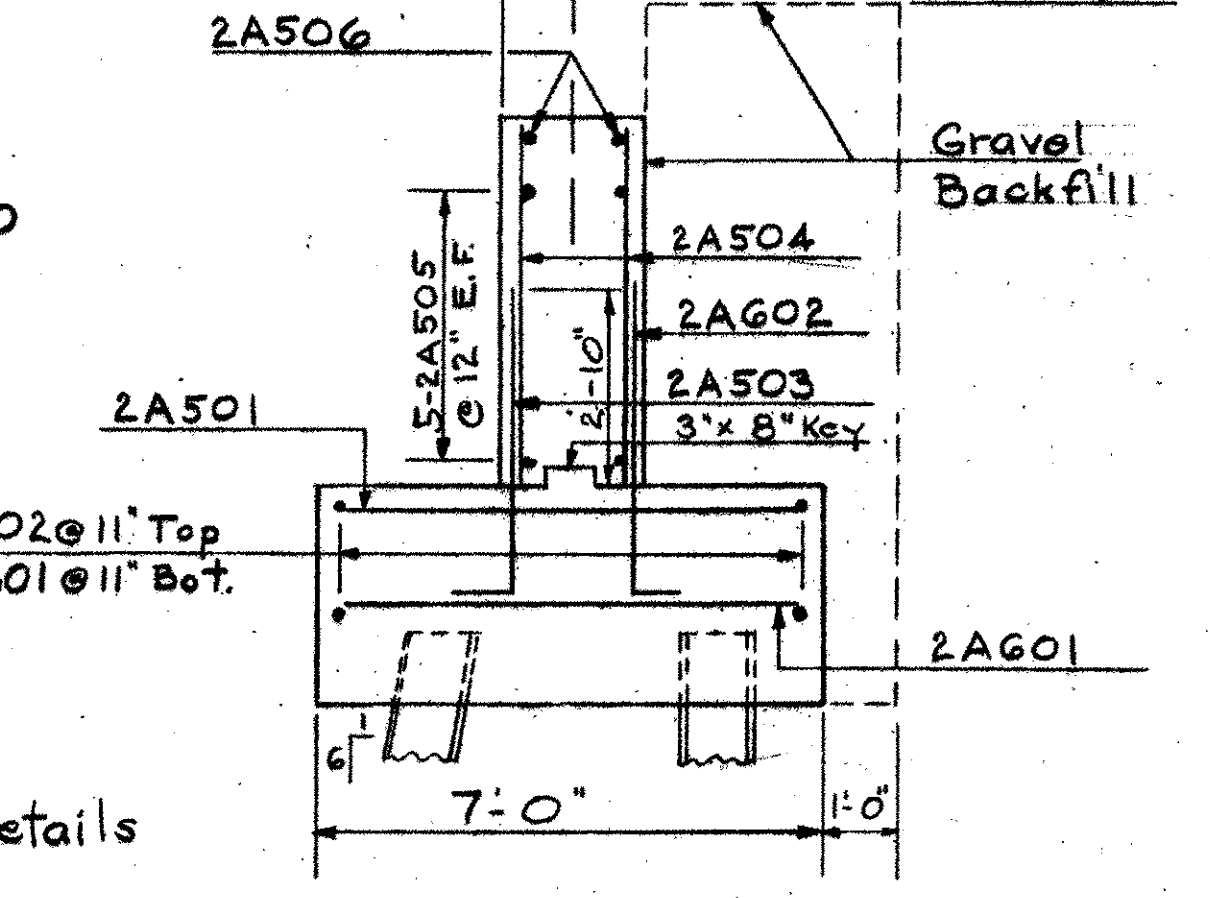
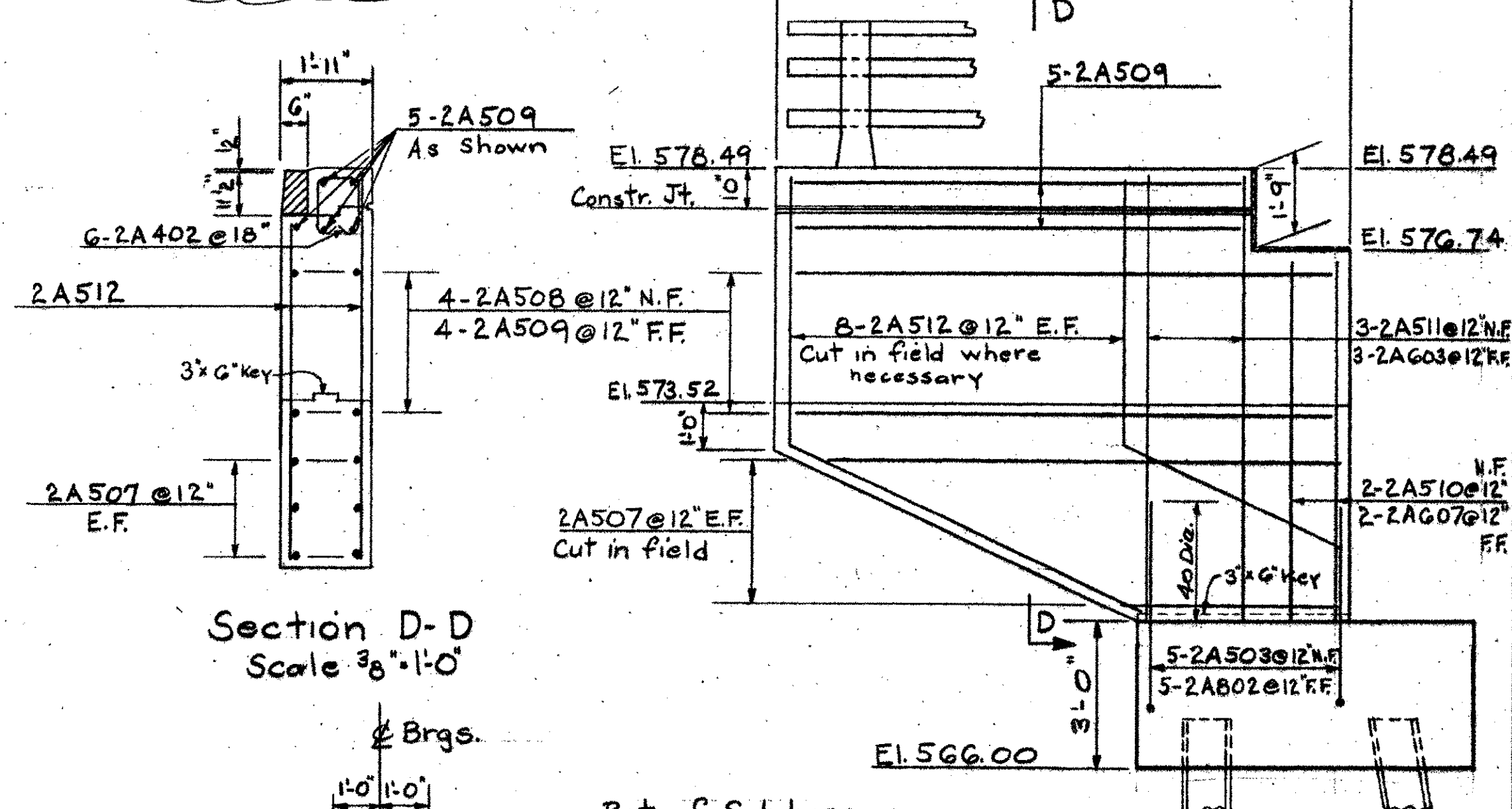
No. of Piles	Size	Est. Length of Piles	Splices allowed for piles not exceeding Plan Length (to be paid for only if used.)	Splices estimated for piles exceeding Plan Length (to be paid for only if used.)
10	12BP53	30'	—	2



Note:
For abutment notes see Abutment #1 Details sh. BR-210.



BRIDGE SHEET BR457
REFERENCE SHEET 3 OF 37
SHEET 209 OF 370



CONTRACT 2

STATE OF VERMONT
DEPARTMENT OF HIGHWAYS

Georgia - Fairfax -
TOWN OF Fairfield - St. Albans

ROUTE No. I 89 Loop Sta.
Abutment #2 Details
I 89 over Approach Road
SCALE As Noted

DRAWN BY A.J.C. CHECKED BY J.J.C.
PROJECT No. I 89-3(35) Cont. #2
SHEET 198 OF 467

Stage 1 Construction