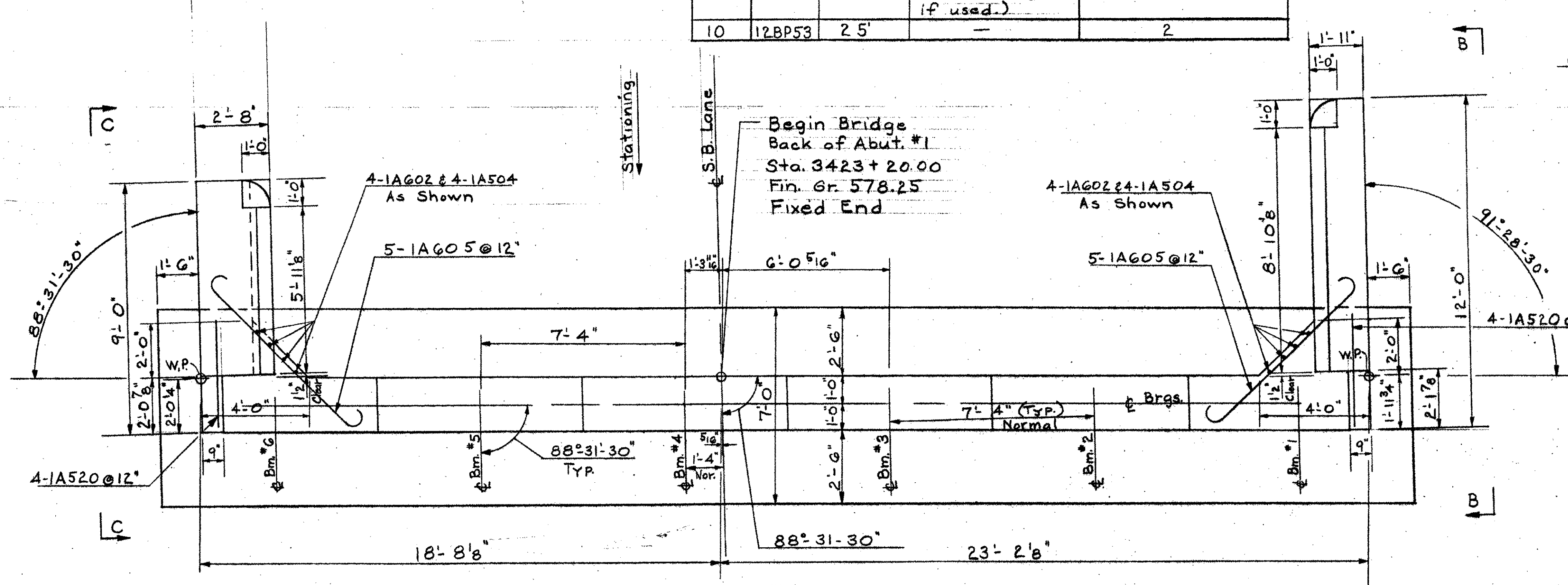
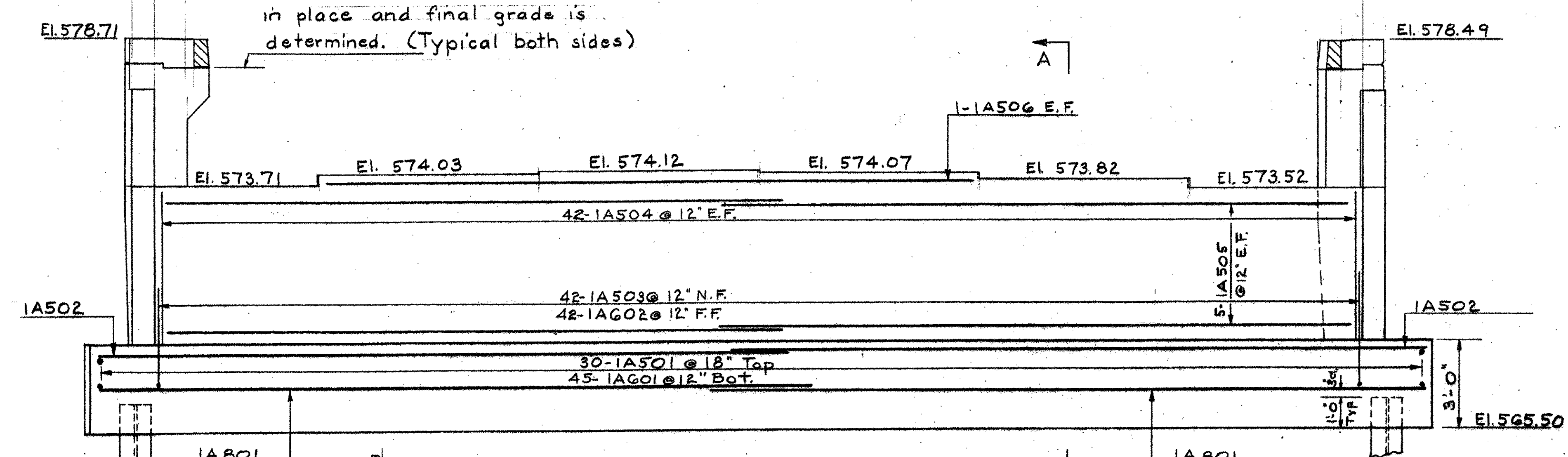


No. of Piles	Size	Est. Length of Piles	Splices allowed for piles not exceeding Plan Length (to be paid for only if used.)	Splices estimated for piles exceeding Plan Length (to be paid for only if used.)
10	12BP53	25'	—	2

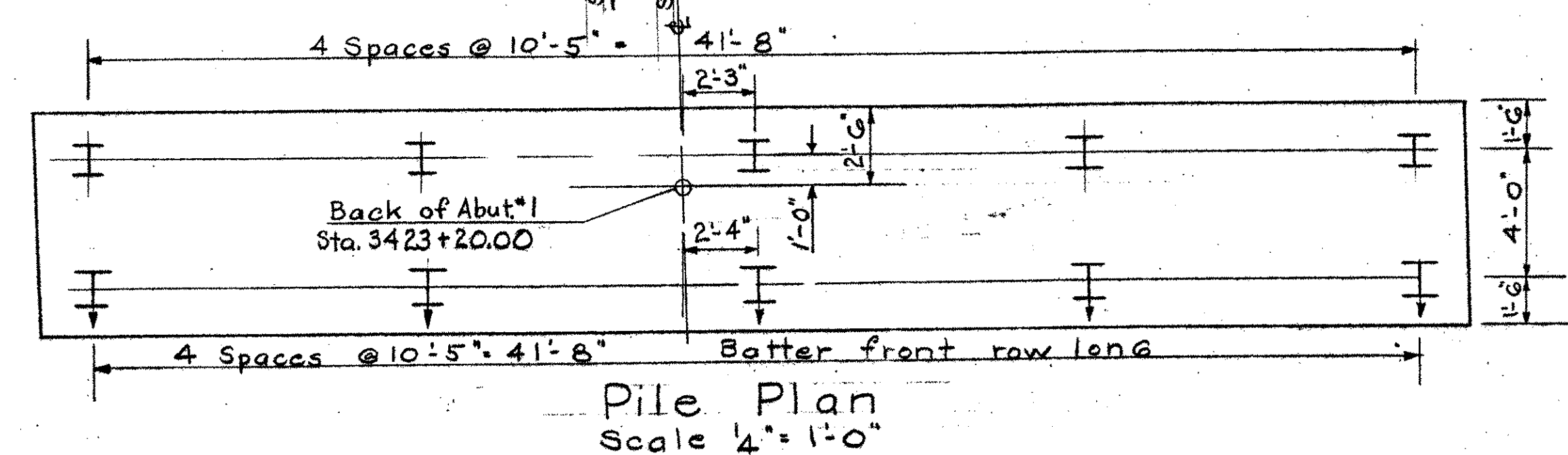


Plan Scale 3/8" = 1'-0"

Note:  
Do not construct above this joint until structural steel is in place and final grade is determined. (Typical both sides)

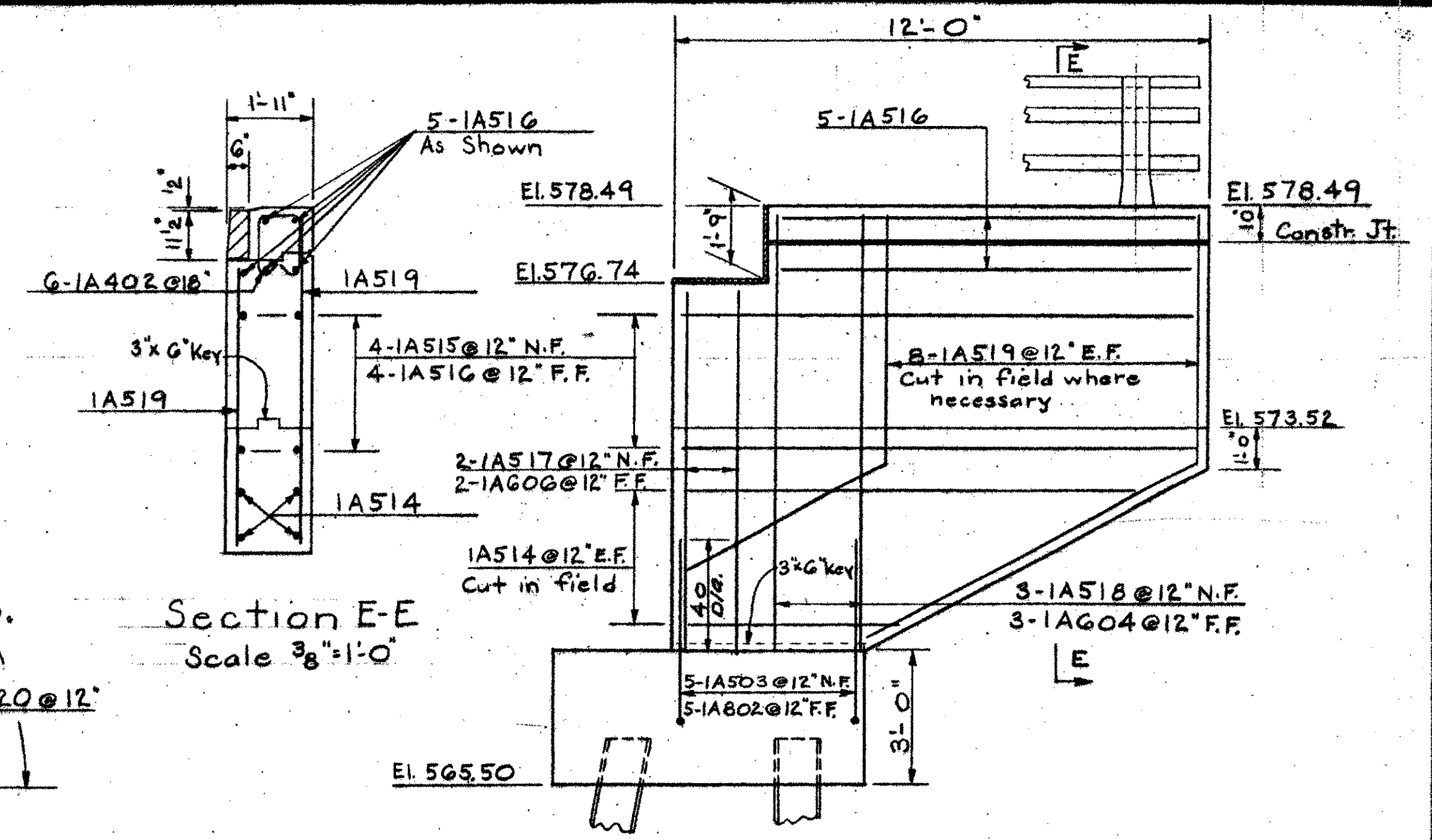


Elevation Scale 3/8" = 1'-0"



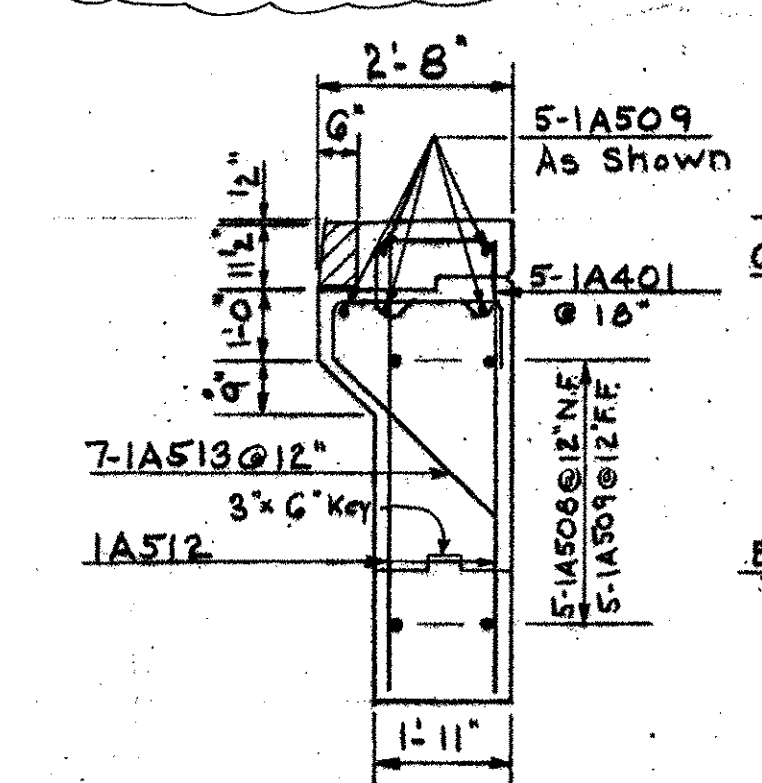
Pile Plan Scale 1/4" = 1'-0"

- Notes:
1. For General Notes see Std. Sh. SCB-D1-G5.
  2. Reinforcing steel is to have a min. clear cover of 3" in footing and 2" above footing.
  3. Raise A504 bars above top of footing where bridge seats increase in height.
  4. F.F. = Far Face, N.F. = Near Face, E.F. = Each Face.
  5. Step bridge seats midway between beams.
  6. Steel piles (12BP53) shall be driven to the designed bearing capacity of 45 tons per pile.

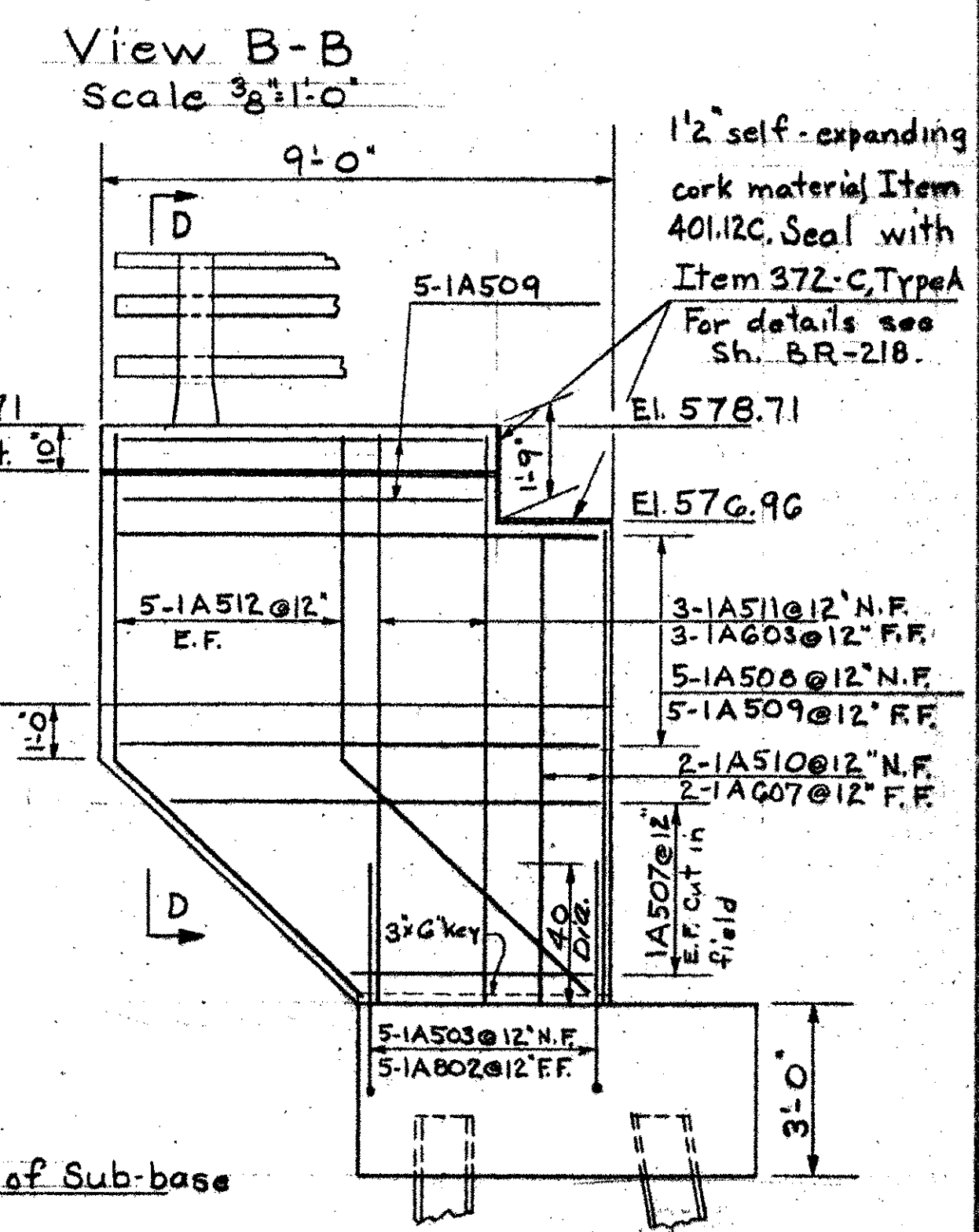


Section E-E Scale 3/8" = 1'-0"

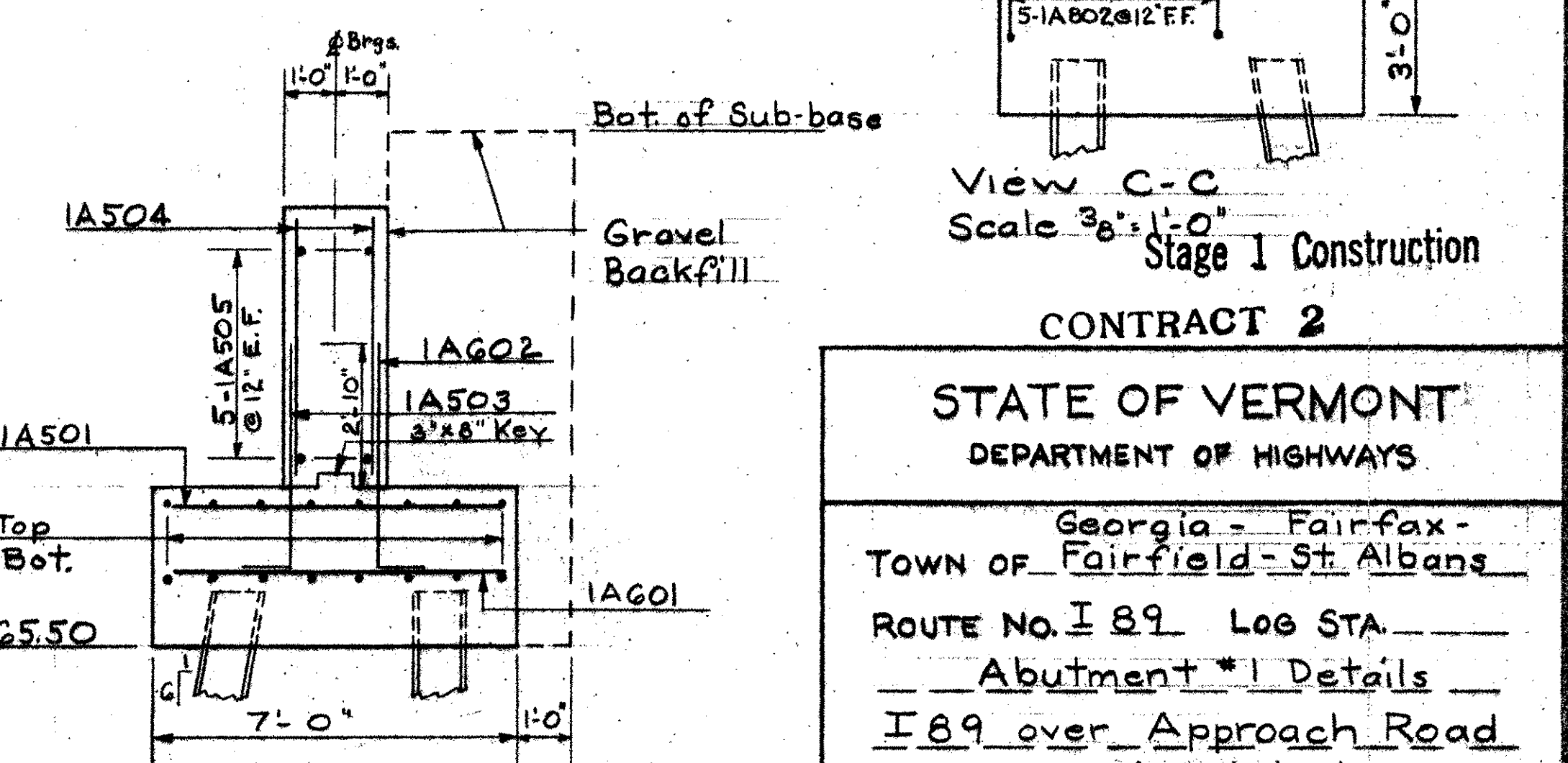
BRIDGE SHEET BR456  
REFERENCE SHEET 2 OF 37  
SHEET 208 OF 370



Section D-D Scale 3/8" = 1'-0"



View B-B Scale 3/8" = 1'-0"



View C-C Scale 3/8" = 1'-0"

Stage I Construction  
CONTRACT 2

STATE OF VERMONT  
DEPARTMENT OF HIGHWAYS

Georgia - Fairfax -  
TOWN OF Fairfield - St. Albans

ROUTE No. I 89 Log Sta. \_\_\_\_\_  
Abutment #1 Details  
I 89 over Approach Road  
SCALE As Noted

DRAWN BY A.J.C. CHECKED BY J.J.C.  
PROJECT No. I 89-3(35) Cont. #2  
SHEET 197 OF 362