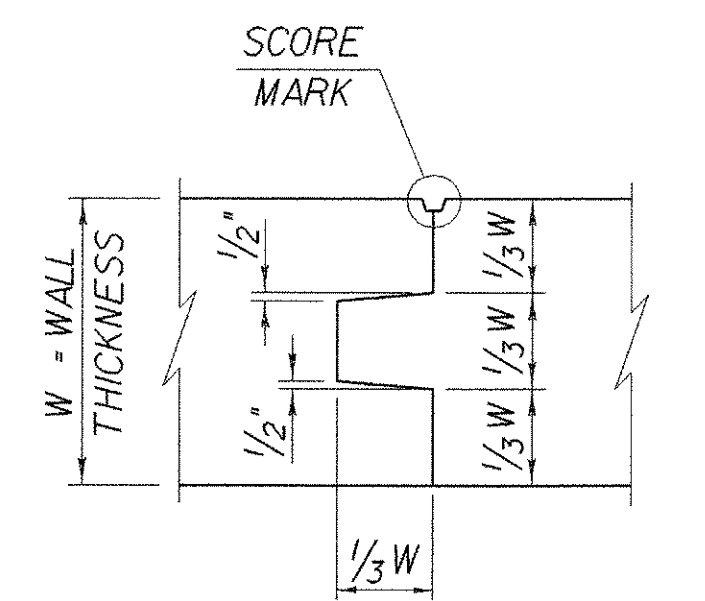
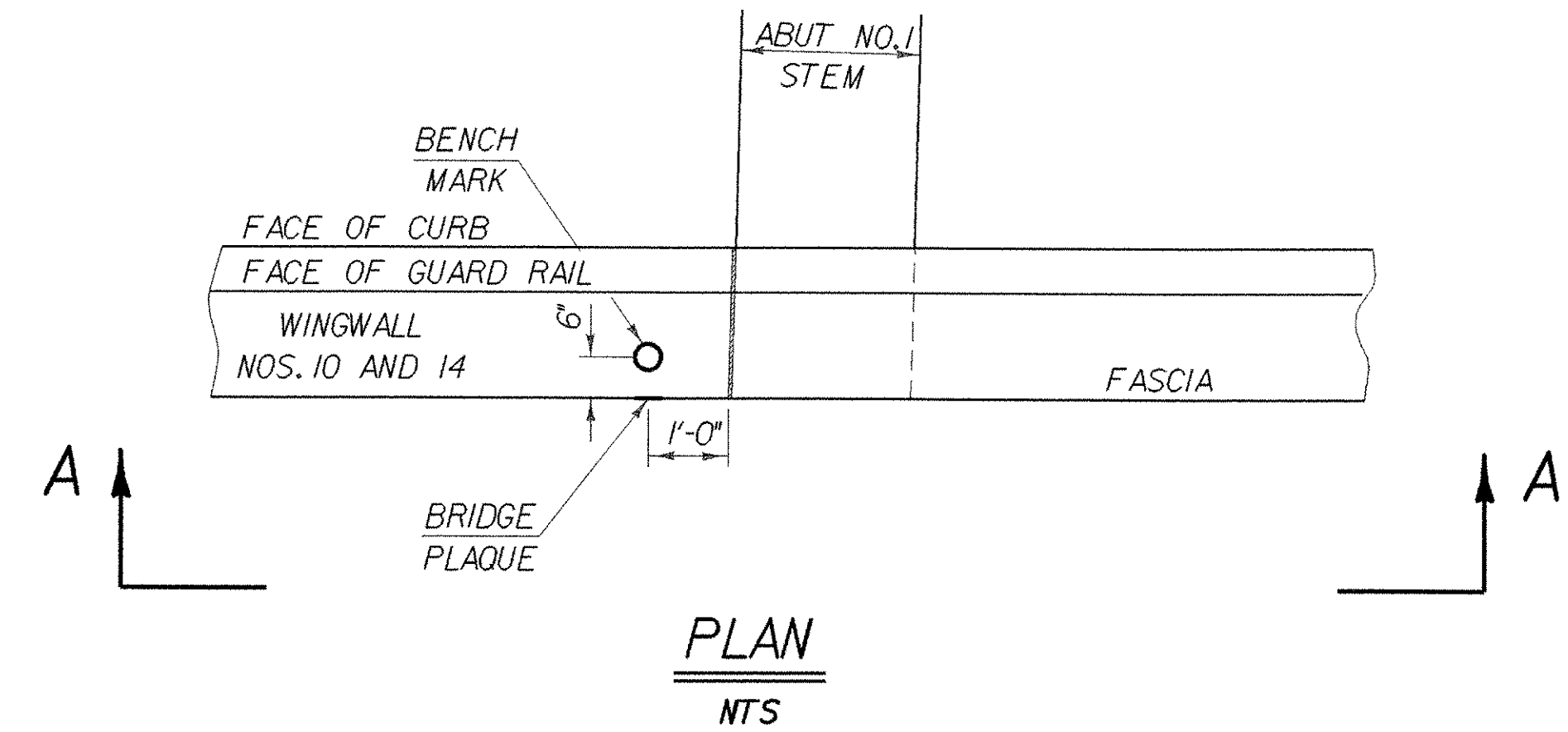


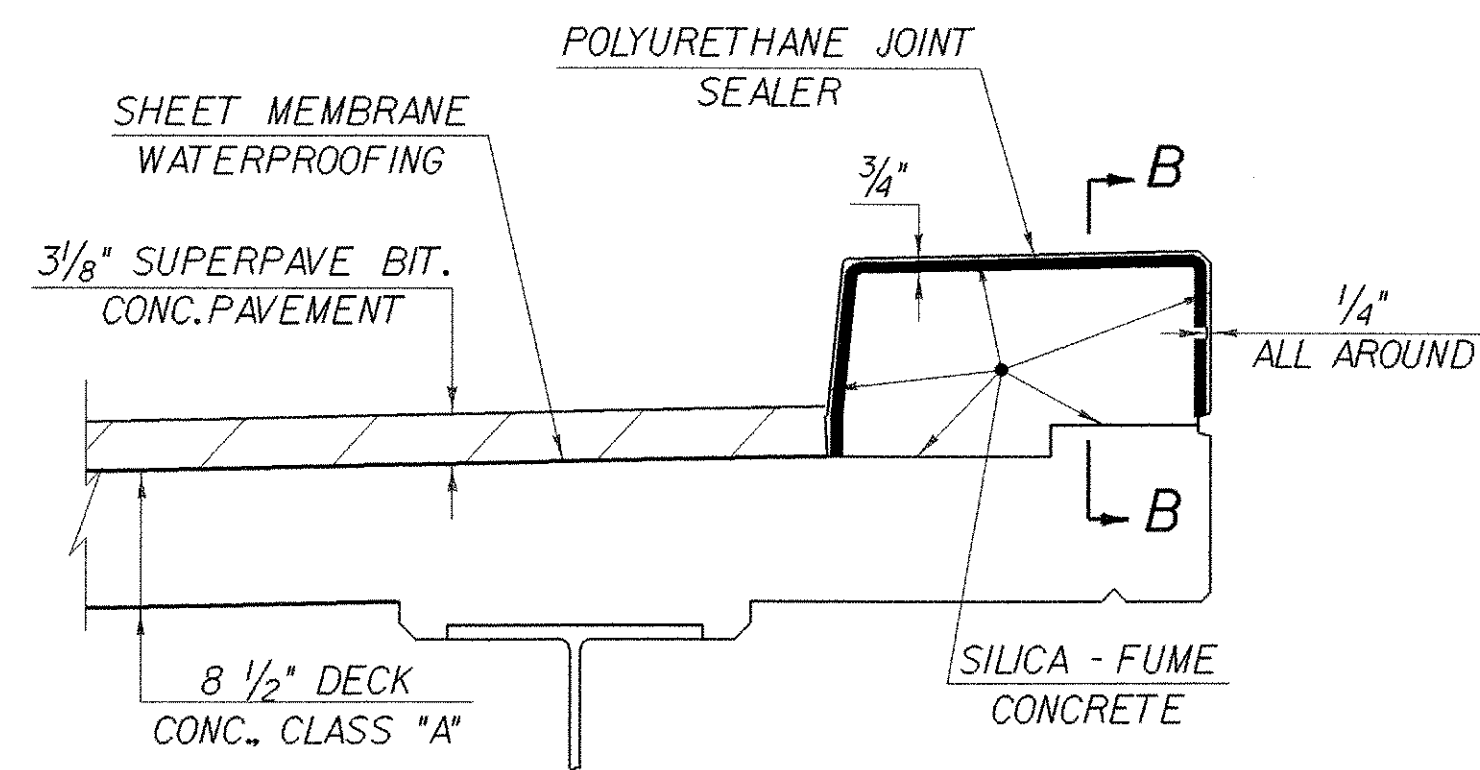
CURB AND RAIL DETAIL
SCALE: 1" = 1'-0"



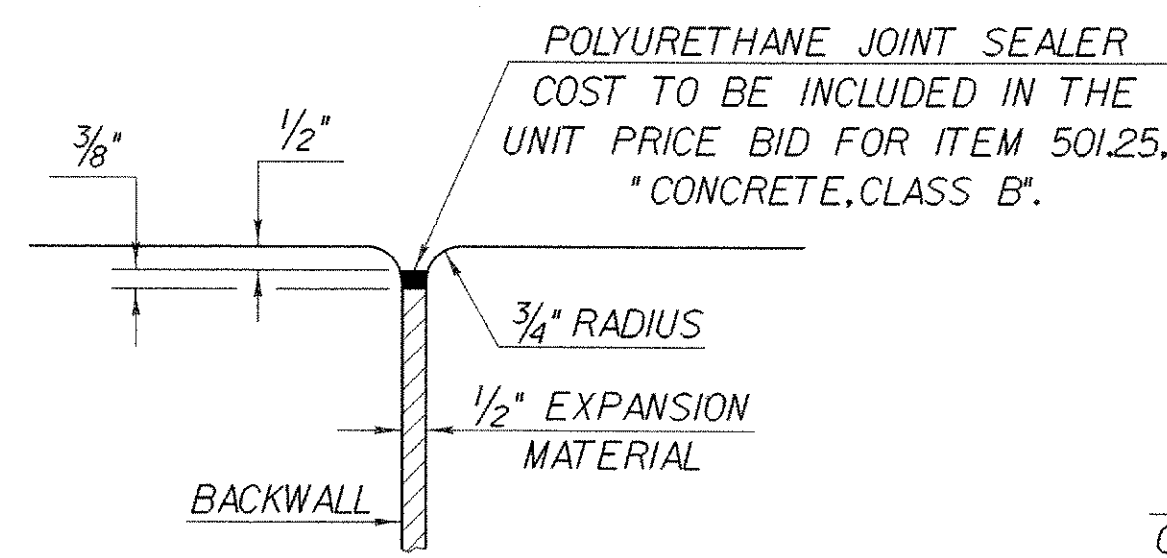
TYPICAL CONCRETE CONSTRUCTION JOINT
NTS



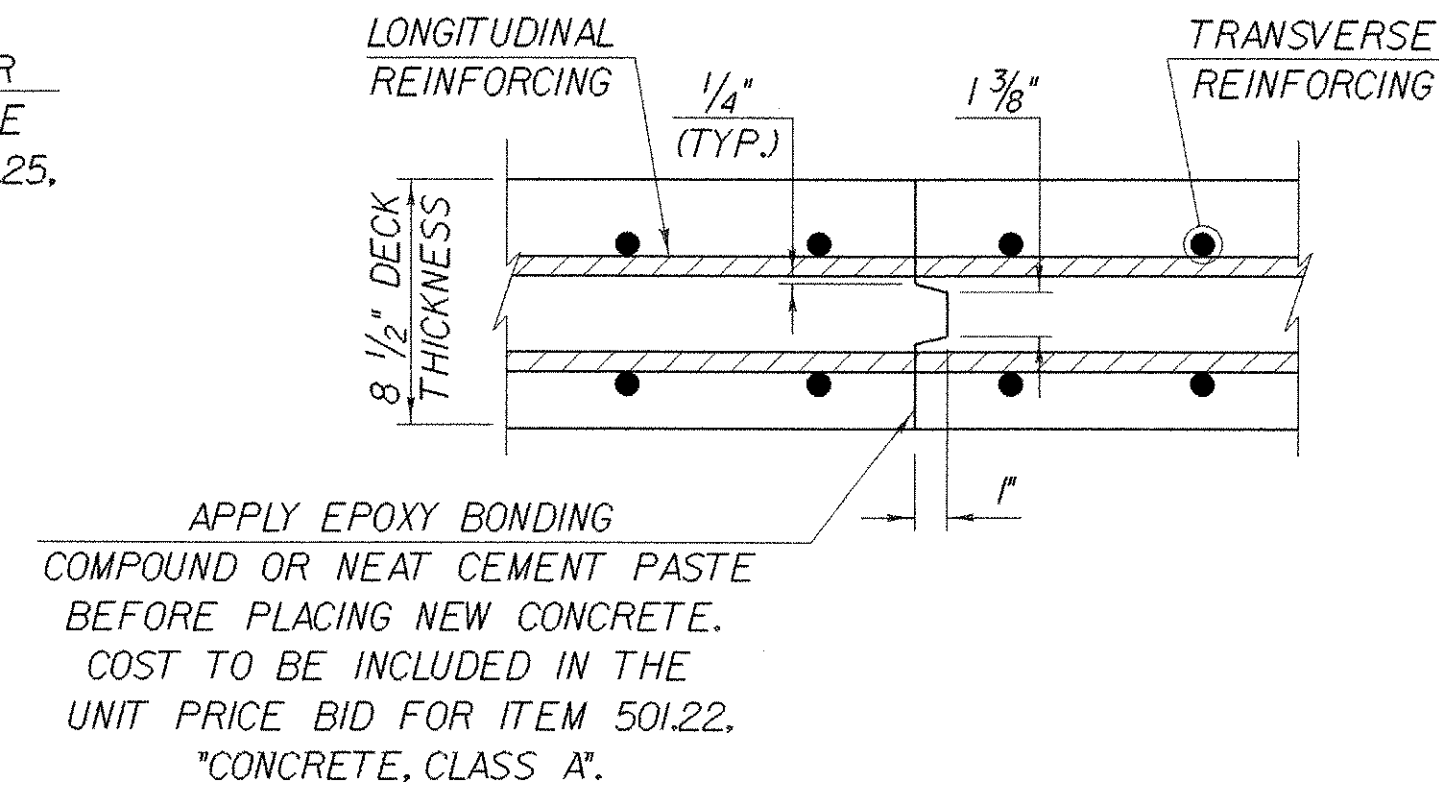
PLAN
NTS



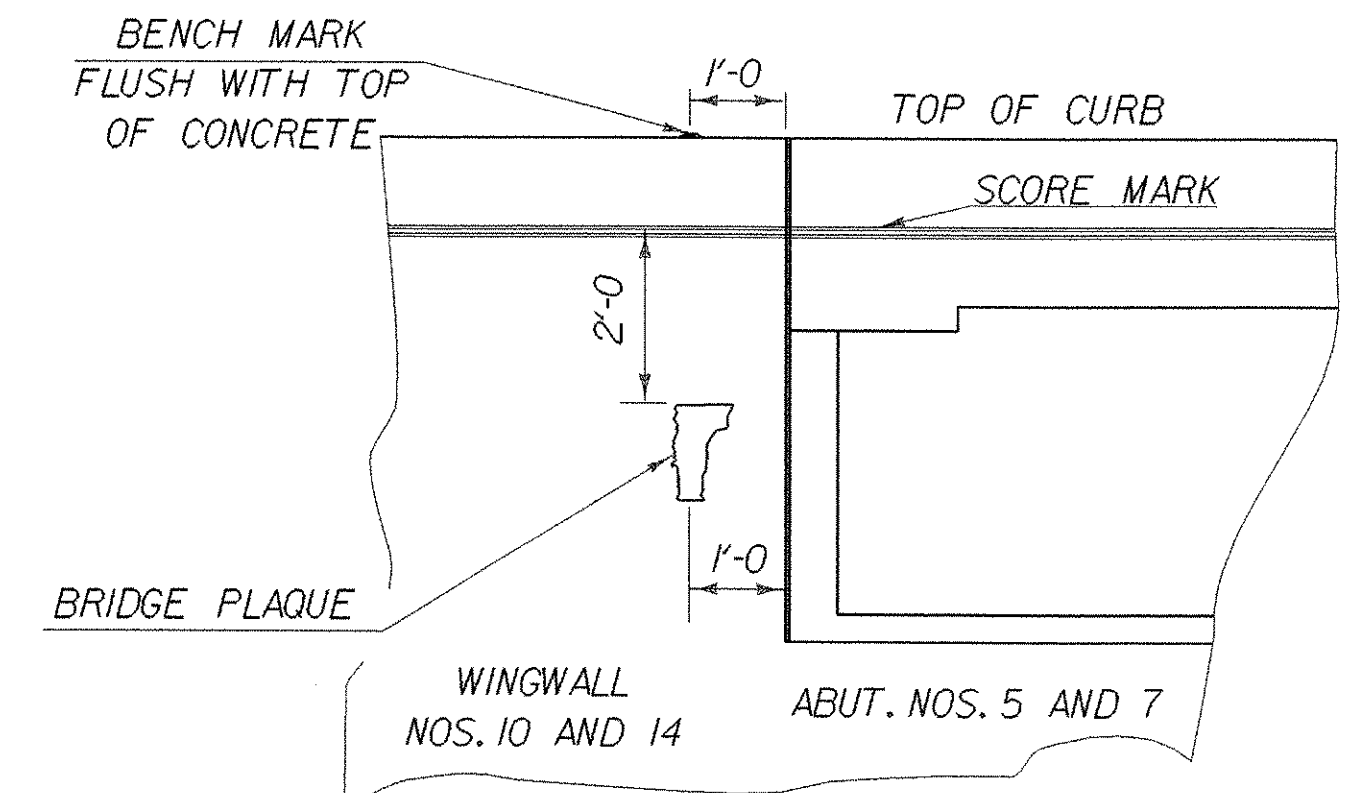
TYPICAL SECTION THROUGH CONCRETE CURB CONSTRUCTION JOINT
NTS



JOINT BETWEEN BACKWALL AND WINGWALL
NTS



TRANSVERSE BRIDGE DECK CONSTRUCTION JOINT DETAILS
NTS

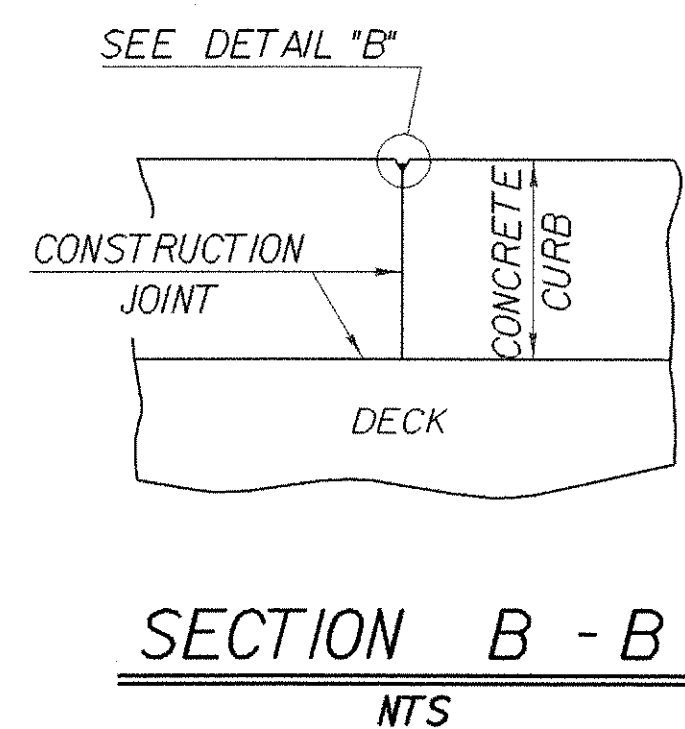


VIEW "A - A" LOCATE BENCH MARK AND BRIDGE PLAQUE
NTS

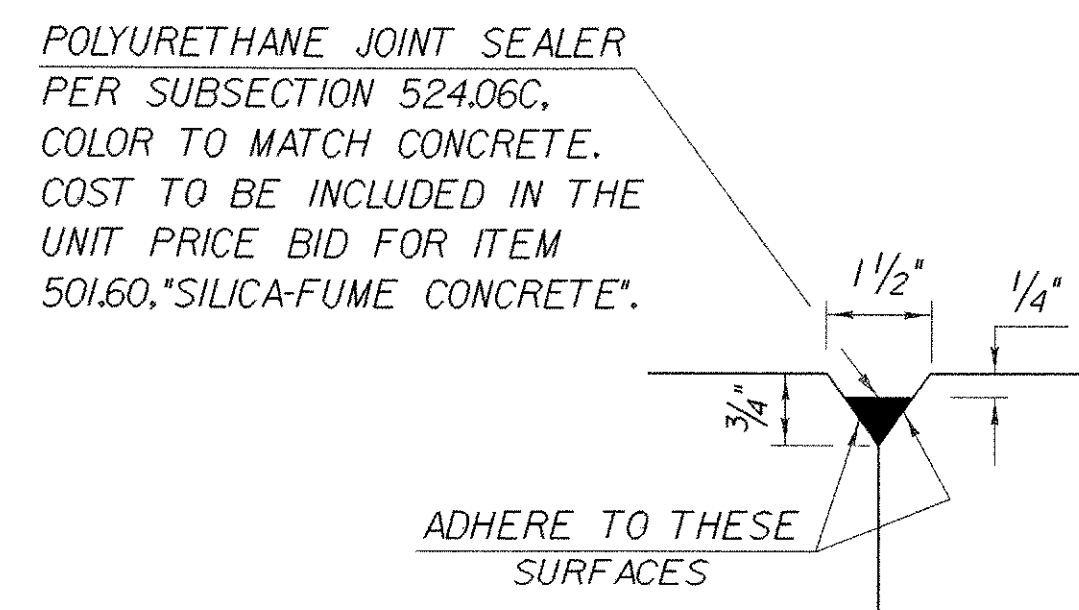
THE BENCH MARKS AND BRIDGE PLAQUES WILL BE SUPPLIED BY THE AGENCY OF TRANSPORTATION AND SHALL BE INSTALLED BY THE CONTRACTOR AT ABUTMENT NOS. 5 AND 7 ON THE RIGHT SIDE AS SHOWN OR AS DIRECTED BY THE ENGINEER.

NOTES

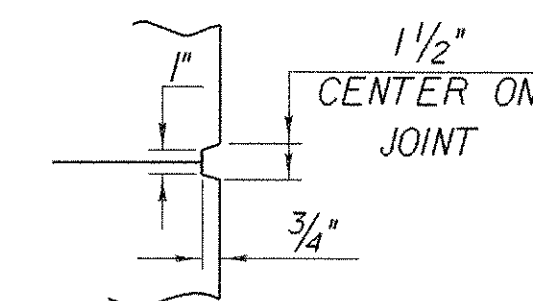
1. SHEET MEMBRANE WATERPROOFING SHALL EXTEND TO FACE OF CURB AS SHOWN ABOVE IN TYPICAL SECTION THROUGH CONCRETE CURB CONSTRUCTION JOINT.
2. CONSTRUCTION JOINTS THROUGH CONCRETE CURBS SHALL BE SPACED A MAXIMUM OF 15'-0" CENTER TO CENTER AND SHALL BE 1'-6" MINIMUM FROM THE CENTER OF THE NEAREST BRIDGE RAIL POST. CONCRETE SHALL BE PLACED IN ALTERNATE SECTIONS WITH A MINIMUM OF 48 HOURS DELAY BETWEEN ADJACENT POURS.
3. LONGITUDINAL REINFORCING SHALL PASS THROUGH CONCRETE CONSTRUCTION JOINTS. CURB REINFORCING STIRRUP BARS SHALL BE TURNED AS REQUIRED TO FIT FLARED ENDS.



SECTION B - B
NTS



DETAIL "B"
NTS



SCORE MARK DETAIL
NTS

STATE OF VERMONT AGENCY OF TRANSPORTATION			
Town of FAIRFAX-FAIRFIELD-ST. ALBANS	Bridge No.	88 N&S	
Highway No. 1-89	Log Sta.		
	Surv. Sta.		
1-89 OVER ST. ALBANS SOUTH STATE HIGHWAY (EXIT 19)			
88 N & S CURB AND RAIL DETAILS			
Designed By M. LOZIER	Drawn By K. CHISHOLM		
Checked By M. LOZIER	Date 2/00	Bridge Design Supervisor R. R. WHITCOMB	Date 2/00
PROJECT FAIRFAX-FAIRFIELD-ST. ALBANS		PROJECT NO. 1 M 089 - 3 (27)	
I.G.C. Info. 96a056Structures\sa056sp3.dgn		sd056cb21	
Bridge Sheet No. BR431	Sheet 183 of 370		