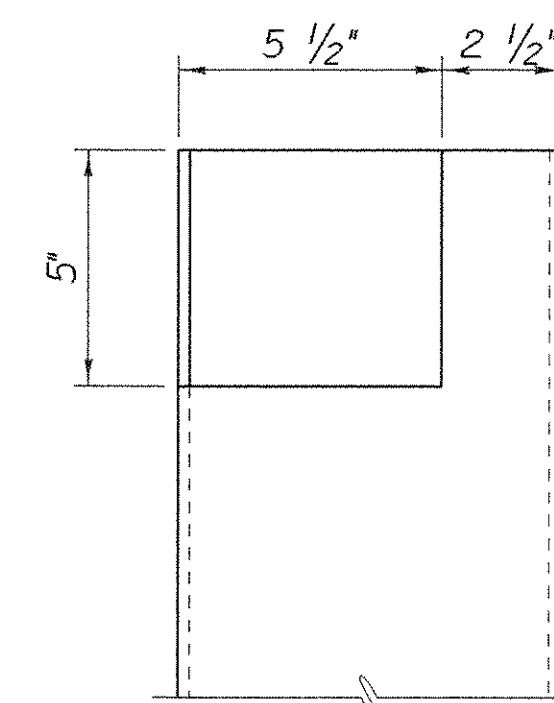
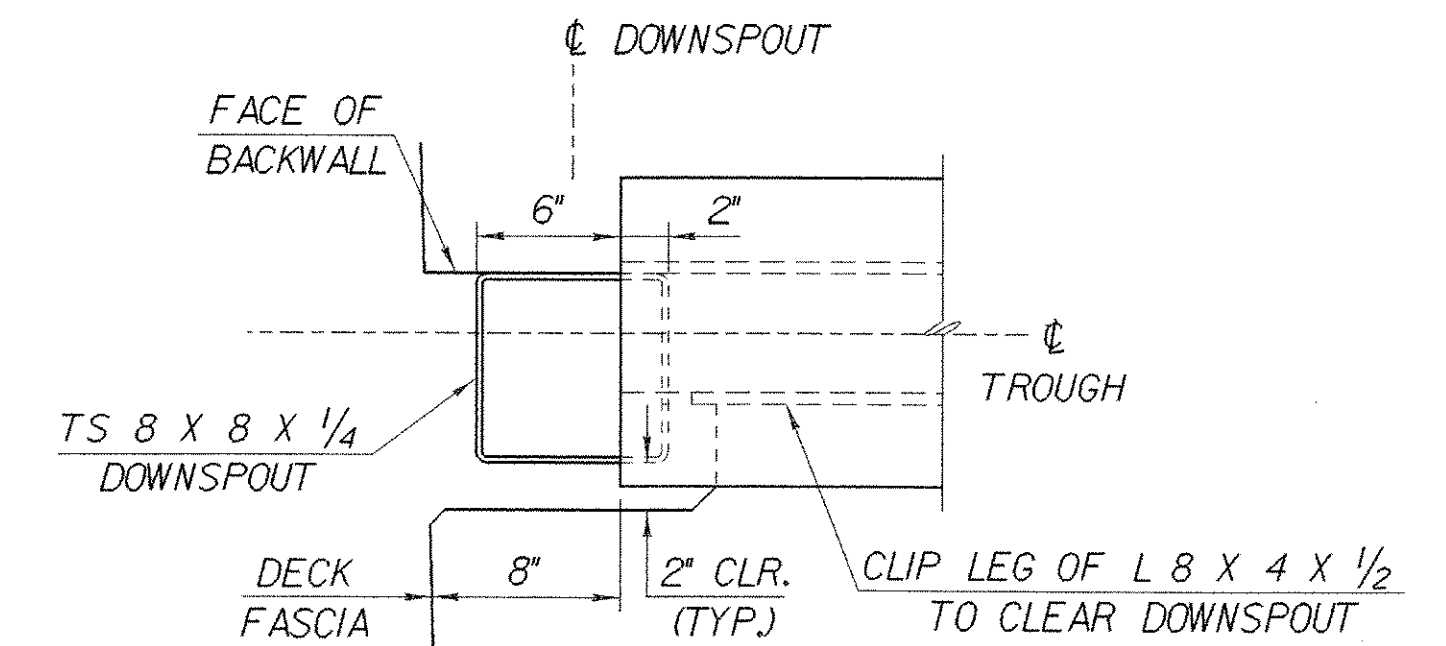


DOWNSPOUT ELEVATION
SCALE: 1" = 1'-0"

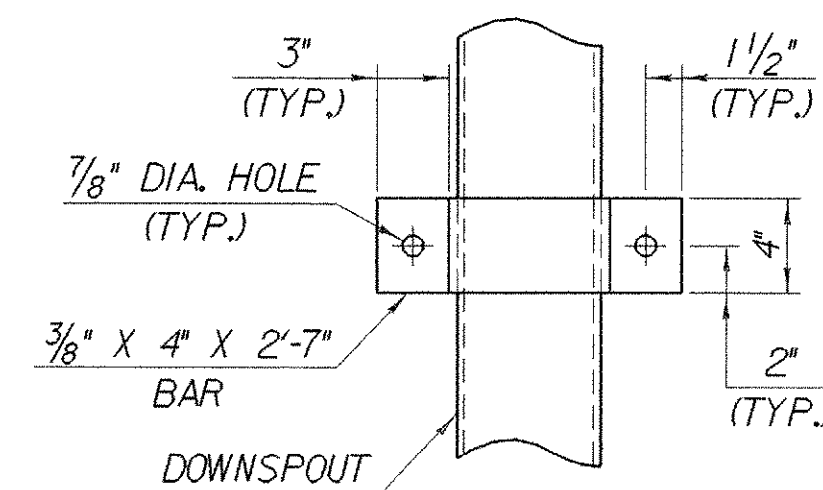


DOWNSPOUT CUTOUT FOR TROUGH
SCALE: 3" = 1'-0"

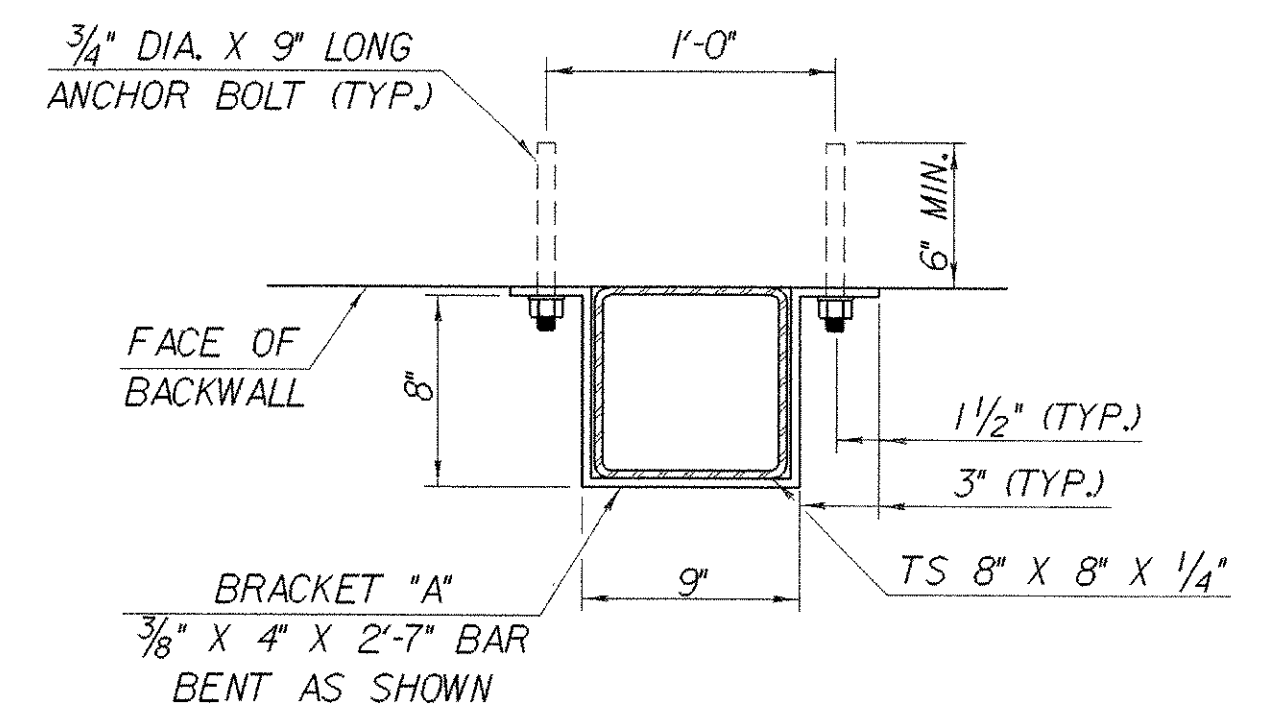


BOTTOM OF DECK TO BE BOXED OUT AS SHOWN TO ALLOW DOWNSPOUT TO COME UP UNDERNEATH THE DRAIN TROUGH. DECK REINFORCING STEEL TO BE CUT AS REQUIRED TO MAINTAIN 3" CLEARANCE FROM BOXOUT

PLAN VIEW OF DECK BOXOUT FOR DOWNSPOUT
SCALE: 1 1/2" = 1'-0"



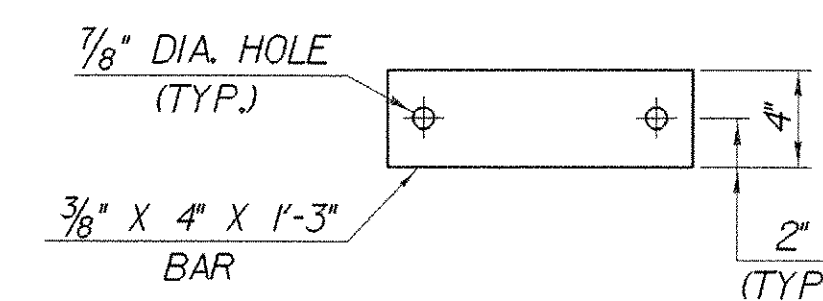
ELEVATION VIEW OF BRACKET "A"
SCALE: 1 1/2" = 1'-0"



DETAILS FOR ATTACHING DOWNSPOUT TO ABUTMENT
SCALE: 1 1/2" = 1'-0"

DOWNSPOUT NOTES

1. HOLLOW STRUCTURAL STEEL TUBING SHALL CONFORM TO A-500 OR A-501.
2. ALL PLATES, BARS, AND ANGLES SHALL CONFORM TO AASHTO M270 GR. 36.
3. DOWNSPOUTS SHALL BE GALVANIZED IN ACCORDANCE WITH ASTM A-123 AFTER FABRICATION.
4. ALL BOLTS AND RELATED HARDWARE SHALL BE ASTM A-307 AND SHALL BE GALVANIZED IN ACCORDANCE WITH ASTM A-153 (AASHTO M232).
5. AREAS OF GALVANIZING DAMAGED BY CUTTING, BURNING, WELDING, PLACING, OR ANY OTHER MEANS SHALL BE REPAIRED IN CONFORMANCE WITH ASTM SPECIFICATIONS A760 / A760M.
6. DOWNSPOUTS, RELATED HARDWARE AND ALL ANCHOR BOLTS SHALL BE PAID FOR UNDER ITEM 506.60 "STRUCTURAL STEEL".



ELEVATION VIEW OF BAR "B"
SCALE: 1 1/2" = 1'-0"

STATE OF VERMONT AGENCY OF TRANSPORTATION	
Town of FAIRFAX-FAIRFIELD-ST. ALBANS	Bridge No. 88 N & S
Highway No. 1-89	Log Sta. Surv. Sta.
1-89 OVER ST. ALBANS SOUTH STATE HIGHWAY (EXIT 19)	
88 N & S DOWNSPOUT DETAILS	
Designed By G. ROY	Drawn By K. CHISHOLM
Checked By M. LOZIER	Bridge Design Supervisor R. R. WHITCOMB
Date 2/00	Date 2/00
PROJECT FAIRFAX-FAIRFIELD-ST. ALBANS	PROJECT NO. 1 M 089 - 3 (27)
I.G.C. Info. 96a056\Structures\sa056exp.dgn	sa056ex3J
Bridge Sheet No. BR428	Sheet 180 of 370