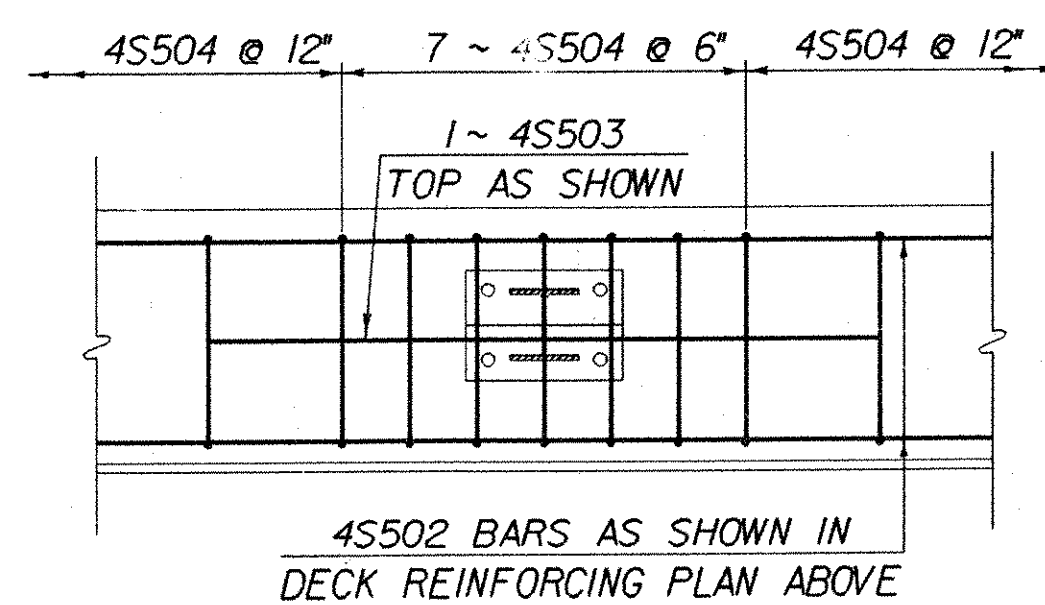


**DECK REINFORCING PLAN**

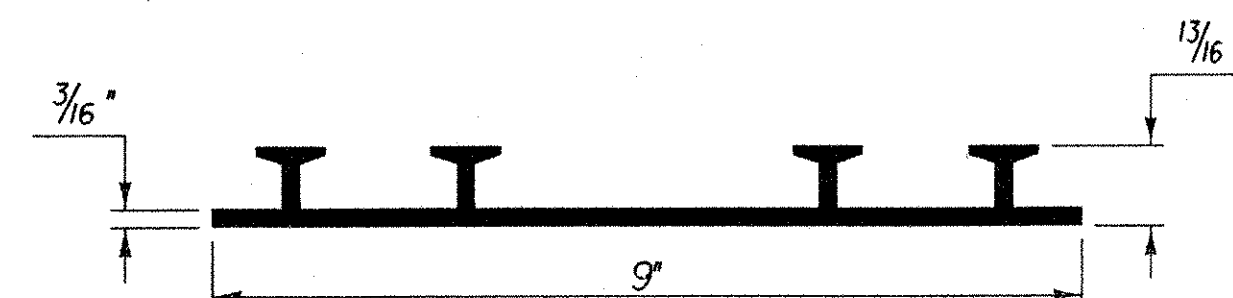
**SPAN ONE**

SCALE: 1/4" = 1'-0"



**CURB REINFORCING DETAIL**

NTS



**P.V.C. WATERSTOP FOR CONSTRUCTION JOINTS**

THE COST FOR P.V.C. WATERSTOP SHALL BE INCLUDED IN THE UNIT PRICE BID FOR ITEM 501.25, "CONCRETE, CLASS B". OTHER CONFIGURATIONS MAY BE USED UPON APPROVAL OF THE STRUCTURES ENGINEER.

**IMPORTANT NOTE: BRIDGE FINISHED GRADES ARE CENTERLINE GRADES.**

**STATE OF VERMONT  
AGENCY OF TRANSPORTATION**

Town Of <b>FAIRFAX-FAIRFIELD-ST. ALBANS</b>	Bridge No. 88N
Highway No. I-89	Log Sta. Surv. Sta.
<b>I-89 OVER ST. ALBANS SOUTH STATE HIGHWAY (EXIT 19)</b>	
<b>88N DECK REINFORCING PLAN SPAN NO.1</b>	
Designed By J. ARMSTRONG	Drawn By K. CHISHOLM
Checked By M. LOZIER	Bridge Design Supervisor R.R. WHITCOMB
Date 2/00	Date 2/00
PROJECT <b>FAIRFAX-FAIRFIELD-ST. ALBANS</b>	PROJECT NO. <b>1M 089 - 3 (27)</b>
I.G.C. Info. 960056Structures\sa056sp4.dgn	sa056rpt1
Bridge Sheet No. BR412	Sheet 164 of 370