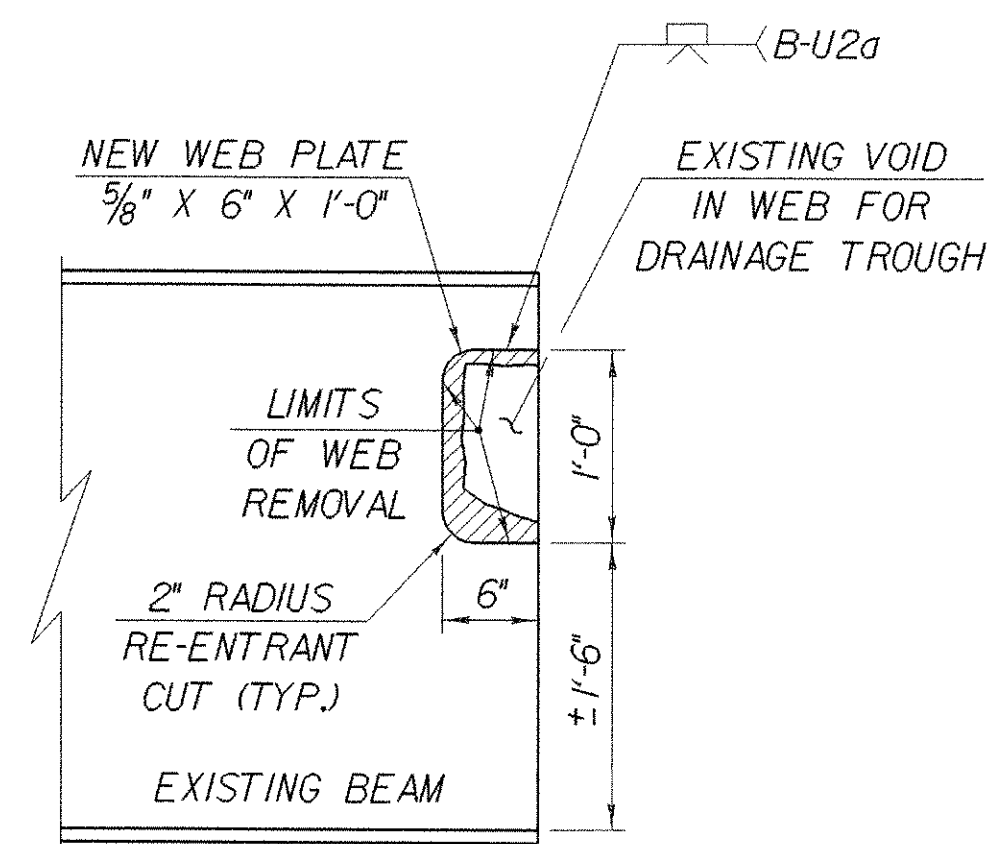
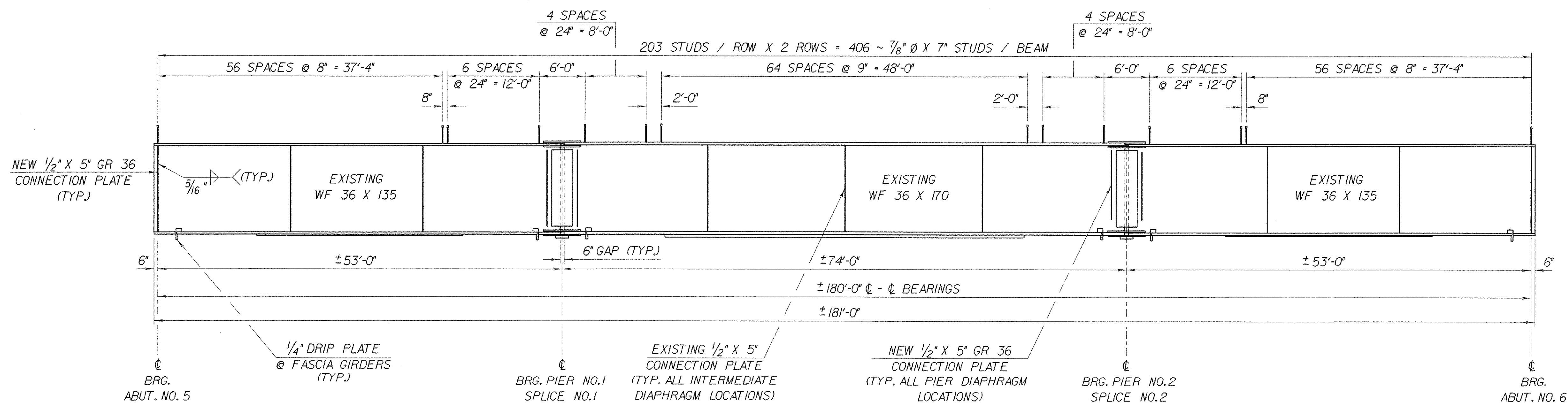


**BRIDGE 88S FRAMING PLAN**  
SCALE: 1/8" = 1'-0"



**BEAM END @ PIERS REPAIR DETAIL**  
SCALE: 1" = 1'-0"



**BRIDGE 88S TYPICAL BEAM ELEVATION**  
HORIZ. SCALE: 1/8" = 1'-0"  
VERT. SCALE: 1/2" = 1'-0"

**NOTES:**

1. THE CUTTING AND WELDING OF THE EXISTING BEAMS SHALL BE IN ACCORDANCE WITH THE APPLICABLE PROVISIONS OF SECTION 506 OF THE VAOT STANDARD SPECIFICATIONS FOR CONSTRUCTION. WELDING PROCEDURES SHALL BE SUBMITTED TO THE STRUCTURES ENGINEER FOR APPROVAL.
2. NEW WEB STEEL SHALL BE AASHTO M270, GRADE 36.
3. PAYMENT FOR ALL MATERIAL, LABOR, AND INCIDENTALS NECESSARY FOR PERFORMING THESE REPAIRS SHALL BE MADE SUBSIDIARY TO ITEM 506.60, "STRUCTURAL STEEL".

**STATE OF VERMONT  
AGENCY OF TRANSPORTATION**

Town of <b>FAIRFAX-FAIRFIELD-ST. ALBANS</b>	Bridge No. 88S
Highway No. 1-89	Log Sta. Surv. Sta.
<b>1-89 OVER ST. ALBANS SOUTH STATE HIGHWAY (EXIT 19)</b>	
<b>88S FRAMING PLAN DETAILS</b>	
Designed By M. LOZIER	Drawn By K. CHISHOLM
Checked By M. LOZIER	Date 2/00
Bridge Design Supervisor R. R. WHITCOMB Date 2/00	
PROJECT <b>FAIRFAX-FAIRFIELD-ST. ALBANS</b>	PROJECT NO. <b>1M 089 - 3 (27)</b>
I.G.C. Info. 96a056Structures\sa056fr2.dgn	sd056gd3j
Bridge Sheet No. BR408	Sheet 160 of 370

SEE PROJECT NOTE 15 ON SHEET BR403 FOR PLUG WELDING OF EXISTING HOLES (NOT SHOWN).