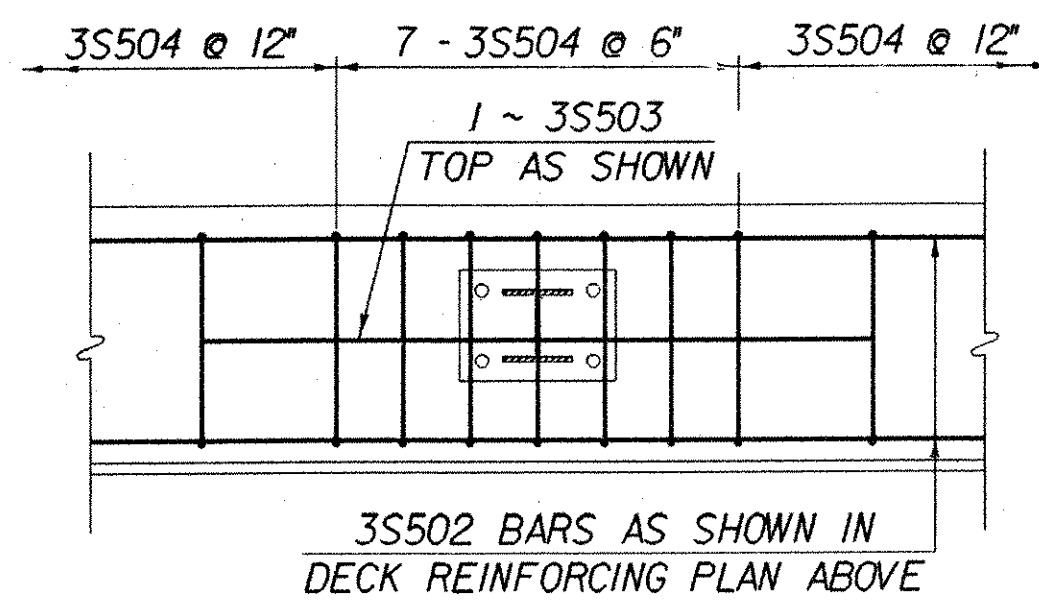


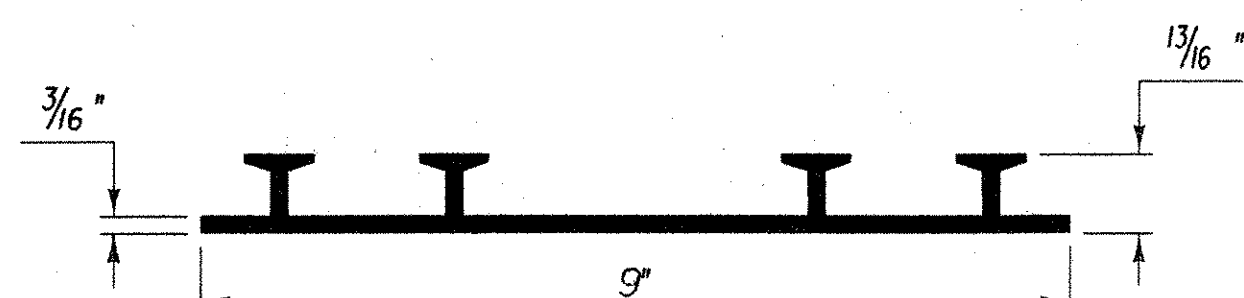
**BRIDGE 88S DECK REINFORCING PLAN  
SPAN ONE**

SCALE: 1/4" = 1'-0"



**CURB REINFORCING DETAIL**

NTS



**P.V.C. WATERSTOP FOR CONSTRUCTION JOINTS**

THE COST FOR P.V.C. WATERSTOP SHALL BE INCLUDED IN THE UNIT PRICE BID FOR ITEM 501.25, CONCRETE, CLASS B. OTHER CONFIGURATIONS MAY BE USED UPON APPROVAL OF THE STRUCTURES ENGINEER.

**IMPORTANT NOTE: BRIDGE FINISHED GRADES ARE CENTERLINE GRADES.**

**STATE OF VERMONT  
AGENCY OF TRANSPORTATION**

Town Of <b>FAIRFAX-FAIRFIELD-ST. ALBANS</b>	Bridge No. 88S
Highway No. <b>1-89</b>	Log Sta. Surv. Sta.
<b>1-89 OVER ST. ALBANS SOUTH STATE HIGHWAY (EXIT 19) 88S DECK REINFORCING PLAN SPAN NO. 1</b>	
Designed By <b>M. LOZIER</b>	Drawn By <b>K. CHISHOLM</b>
Checked By <b>M. LOZIER</b>	Bridge Design Supervisor
Date <b>2/00</b>	R. R. WHITCOMB Date <b>2/00</b>
PROJECT <b>FAIRFAX-FAIRFIELD-ST. ALBANS</b>	PROJECT NO. <b>1M 089 - 3 (27)</b>
I.G.C. Info. <b>96a056Structures\sa056sp3.dgn</b>	sa056rpl
Bridge Sheet No. <b>BR405</b>	Sheet <b>157</b> of <b>370</b>