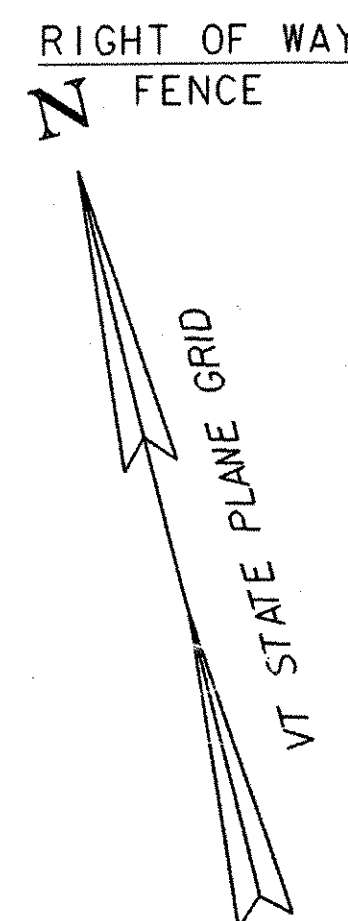
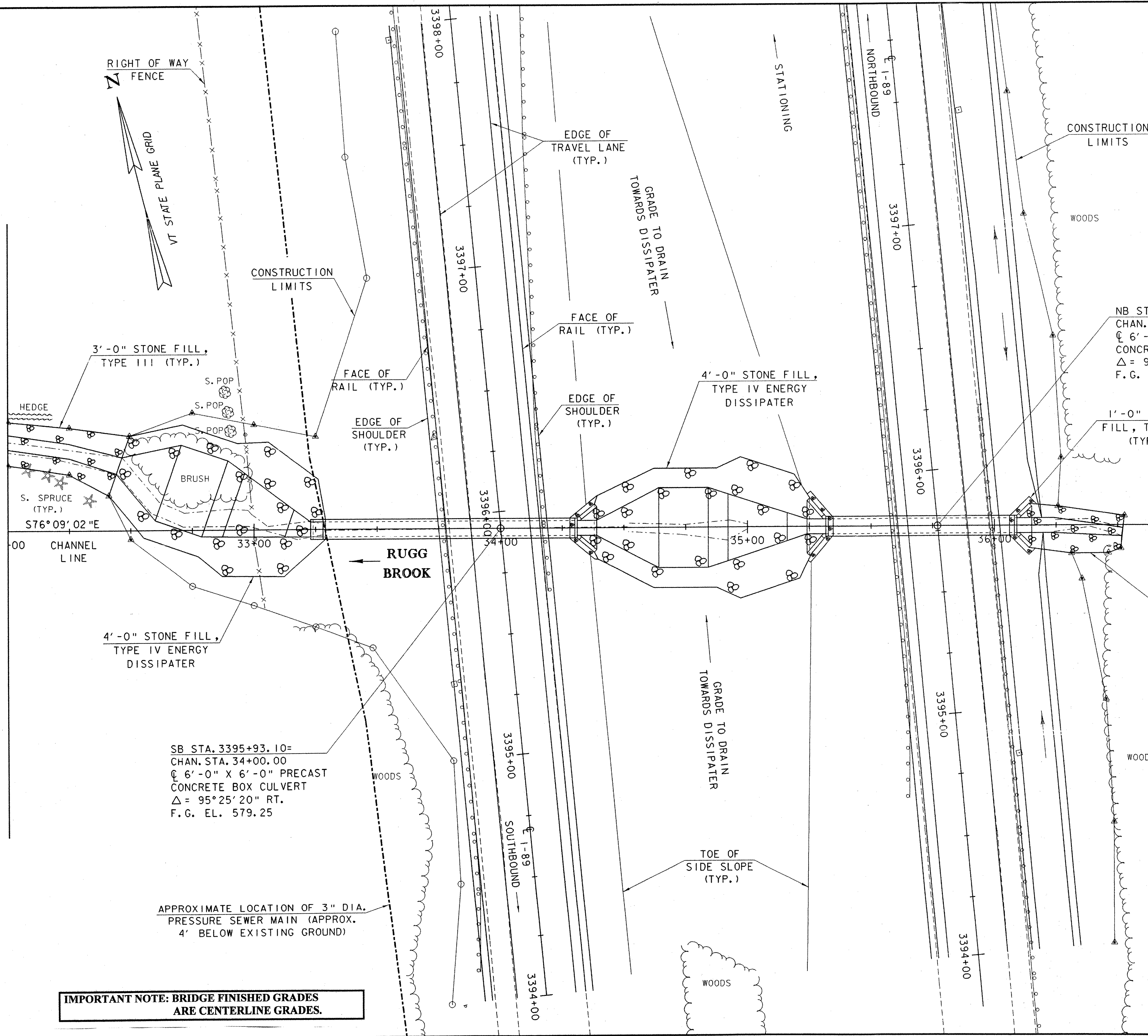


A-A

MATCHLINE



3'-0" STONE FILL, TYPE III (TYP.)

CONSTRUCTION LIMITS

FACE OF RAIL (TYP.)

EDGE OF SHOULDER (TYP.)

EDGE OF TRAVEL LANE (TYP.)

FACE OF RAIL (TYP.)

EDGE OF SHOULDER (TYP.)

4'-0" STONE FILL, TYPE IV ENERGY DISSIPATER

CONSTRUCTION LIMITS

WOODS

NB STA. 3395+77.05 =
CHAN. STA. 35+77.01
6'-0" X 6'-0" PRECAST
CONCRETE BOX CULVERT
Δ = 95°25'13" RT.
F.G. EL. 598.62

1'-0" STONE FILL, TYPE I (TYP.)

CHANNEL POE
STA. 36+75.00

S. SPRUCE (TYP.)
S76°09'02"E

CHANNEL LINE

RUGG BROOK

4'-0" STONE FILL, TYPE IV ENERGY DISSIPATER

SB STA. 3395+93.10 =
CHAN. STA. 34+00.00
6'-0" X 6'-0" PRECAST
CONCRETE BOX CULVERT
Δ = 95°25'20" RT.
F.G. EL. 579.25

APPROXIMATE LOCATION OF 3" DIA.
PRESSURE SEWER MAIN (APPROX.
4' BELOW EXISTING GROUND)

**IMPORTANT NOTE: BRIDGE FINISHED GRADES
ARE CENTERLINE GRADES.**

EXISTING STRUCTURE DATA

NB: 60" DIA. X 120' ACCGMP
SB: 60" DIA. X 120' ACCGMP



**STATE OF VERMONT
AGENCY OF TRANSPORTATION**

Town of FAIRFAX-FAIRFIELD-ST. ALBANS	Bridge No. 87-3 N & S
Highway No. 1-89	Log Sta. Surv. Sta.
1-89 OVER THE RUGG BROOK	
87-3 N & S PLAN	
Designed By G. ROY	Drawn By G. ROY
Checked By M. LOZIER	Bridge Design Supervisor R.R. WHITCOMB
Date 6/00	Date 6/00
PROJECT FAIRFAX-FAIRFIELD-ST. ALBANS	PROJECT NO. 1M 089 - 3 (27)
I.G.C. Info. 96a056Structures\sa056bdr.dgn	sa056i02j
Bridge Sheet No. BR307	Sheet 133 of 370