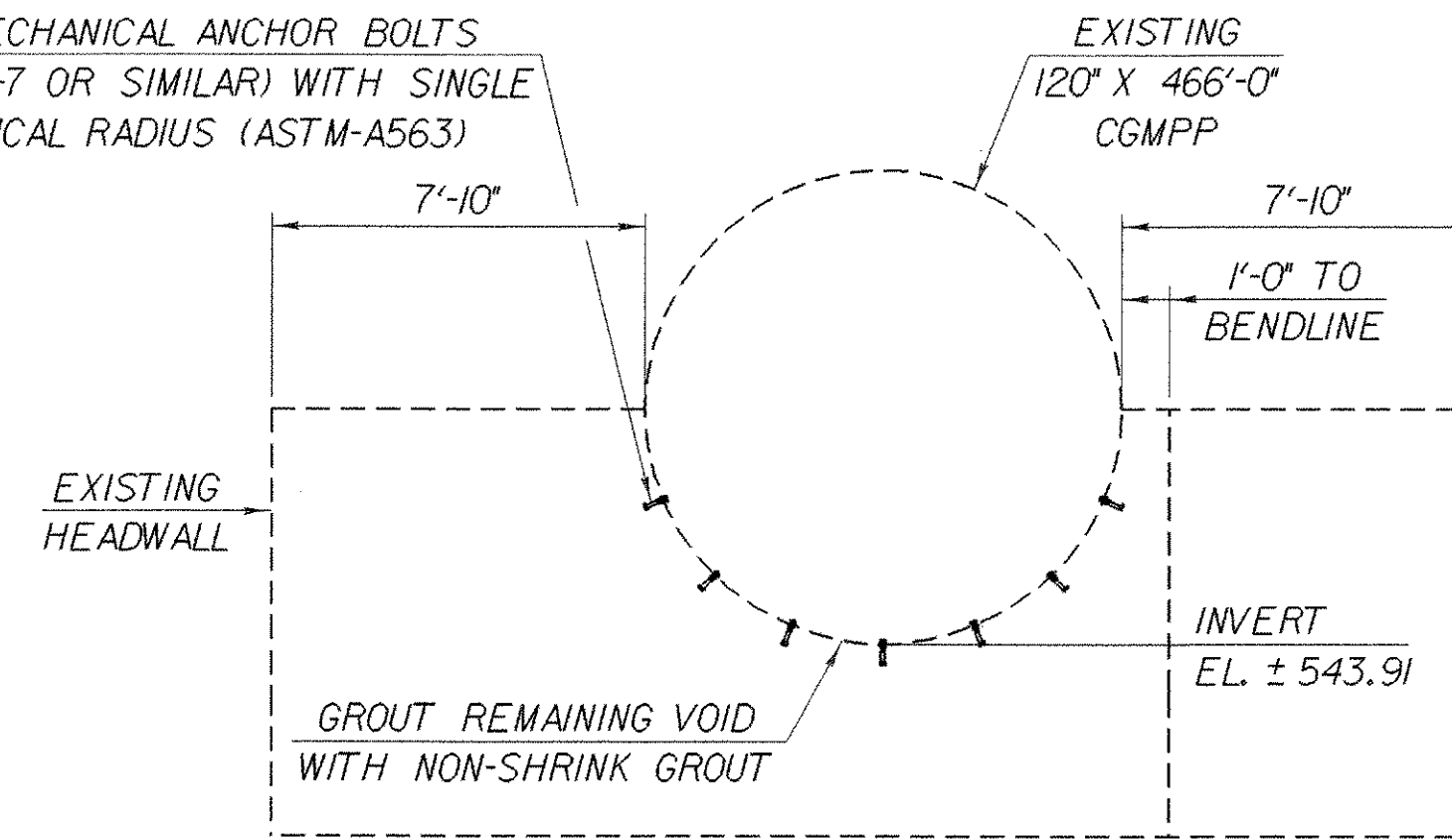


**INLET HEADWALL NOTES**

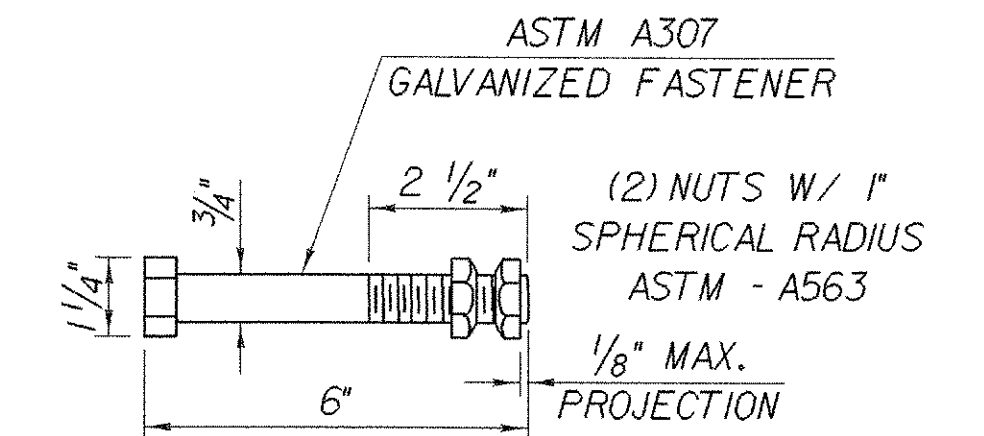
1. NO HEADWALL CONCRETE REPAIRS ARE ANTICIPATED AT THE INLET END. ANY REPAIRS NECESSITATED DUE TO CONTRACTOR NEGLIGENCE SHALL BE PERFORMED AT NO EXPENSE TO THE STATE. ANY REPAIRS DIRECTED BY THE RESIDENT ENGINEER SHALL BE PAID FOR AS EXTRA WORK.
2. ANCHOR BOLTS SHALL BE INSTALLED TO THE SPECIFICATIONS OF THE MANUFACTURER.
3. INSTALL ANCHOR BOLTS IN ALTERNATE CIRCUMFERENTIAL SEAM HOLES TO THE ORIGINAL INSTALLATION. GROUT REMAINING VOID WITH NON-SHRINK GROUT.
4. MATERIAL FOR GROUTING SHALL MEET THE REQUIREMENTS OF SUBSECTION 707.03 OF THE STANDARD SPECIFICATIONS FOR CONSTRUCTION.
5. PAYMENT FOR THE BOLTS AND GROUT MATERIAL, AND ALL MATERIALS, LABOR, AND INCIDENTALS ASSOCIATED WITH THEIR INSTALLATION AND APPLICATION, RESPECTIVELY, SHALL BE MADE SUBSIDIARY TO ITEM 501.58, "MORTAR, TYPE IV (MOD)."
6. WATER REPELLENT SHALL BE APPLIED TO ALL EXPOSED CONCRETE SURFACES.

NEW 3/4" DIA. X 7" MECHANICAL ANCHOR BOLTS (HILTI KWIK-BOLT 34-7 OR SIMILAR) WITH SINGLE NUT WITH 1" SPHERICAL RADIUS (ASTM-A563)



**INLET HEADWALL ELEVATION**

SCALE 1/4" = 1'-0"



**ANCHOR BOLT DETAIL FOR OUTLET HEADWALL**

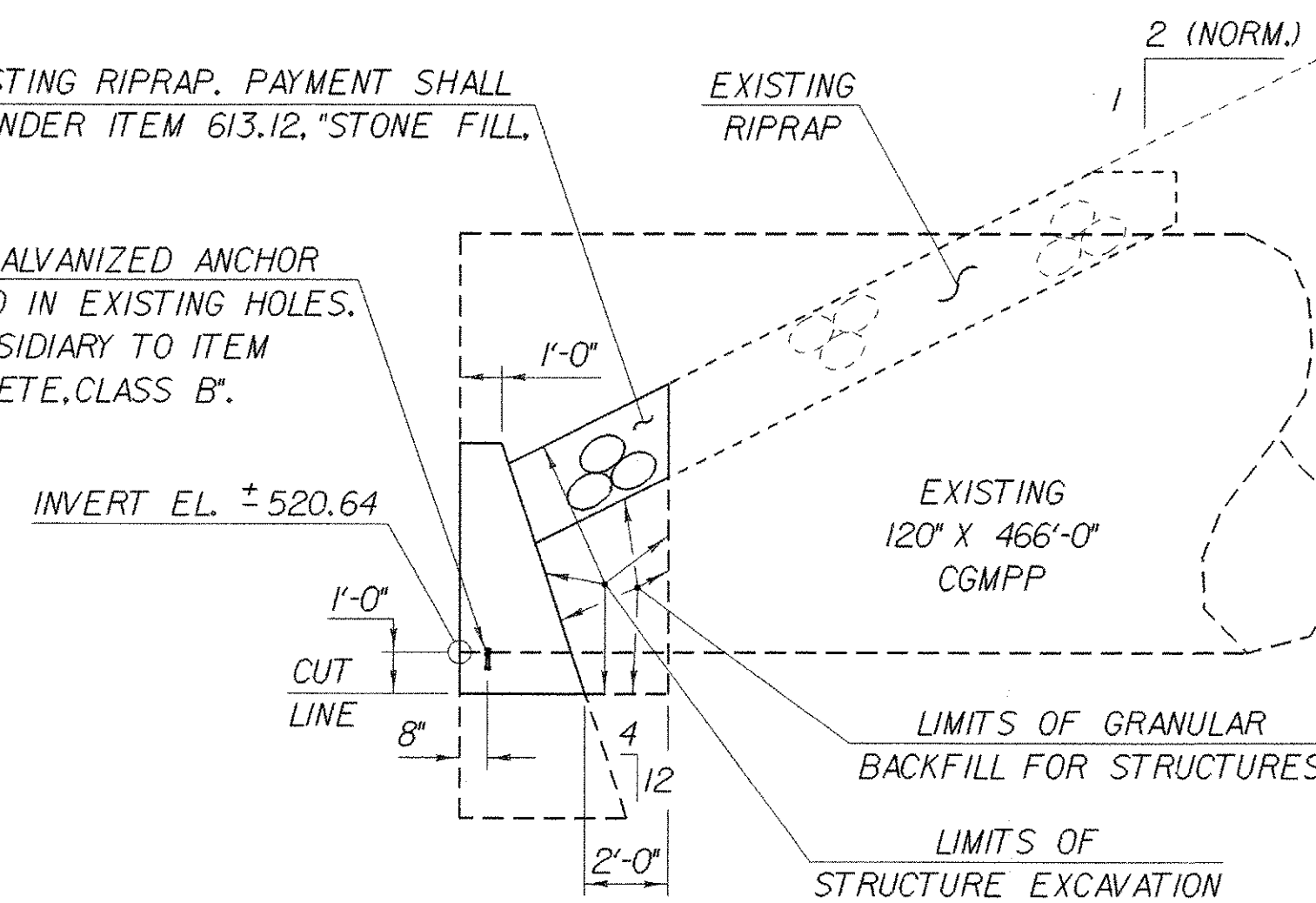
NTS

**OUTLET HEADWALL NOTES**

1. REMOVE EXISTING HEADWALL CONCRETE TO CUT LINE AS SHOWN IN THE PLANS. PAYMENT SHALL BE MADE UNDER ITEM 529.25, "REMOVAL OF CONCRETE AND MASONRY".
2. NEW HEADWALL CONCRETE SHALL BE CONCRETE, CLASS B AND SHALL BE PAID FOR UNDER ITEM 501.25, "CONCRETE, CLASS B".
3. DRILLING AND GROUTING OF DOWEL BARS SHALL BE PERFORMED IN ACCORDANCE WITH SECTION 507 OF THE STANDARD SPECIFICATIONS FOR CONSTRUCTION. MATERIAL FOR GROUTING SHALL MEET THE REQUIREMENTS OF SUBSECTION 707.03. PAYMENT SHALL BE MADE UNDER ITEM 507.16, "DRILLING AND GROUTING DOWELS".
4. WATER REPELLENT SHALL BE APPLIED TO ALL EXPOSED CONCRETE SURFACES.
5. ALL EXPOSED EDGES OF NEW CONCRETE SHALL BE CHAMFERED 1" X 1".
6. ALL REINFORCING STEEL INCLUDING DOWEL BARS, SHALL BE EPOXY COATED AND PAID FOR UNDER ITEM 507.17, "EPOXY COATED REINFORCING STEEL". WHEN EPOXY COATED REINFORCING STEEL IS CUT, THE UNCOATED ENDS SHALL BE REPAIRED WITH MATERIALS AND PROCEDURES APPROVED BY THE COATING MANUFACTURER. FLAME CUTTING OF EPOXY COATED REINFORCING STEEL WILL NOT BE PERMITTED.
7. MINIMUM COVER FOR REINFORCING STEEL SHALL BE AS SHOWN IN THE PLANS.
8. REINFORCING PLACEMENT TOLERANCES SHALL BE:  
SPACING: ± 1"  
CLEARANCE: ± 1/4"

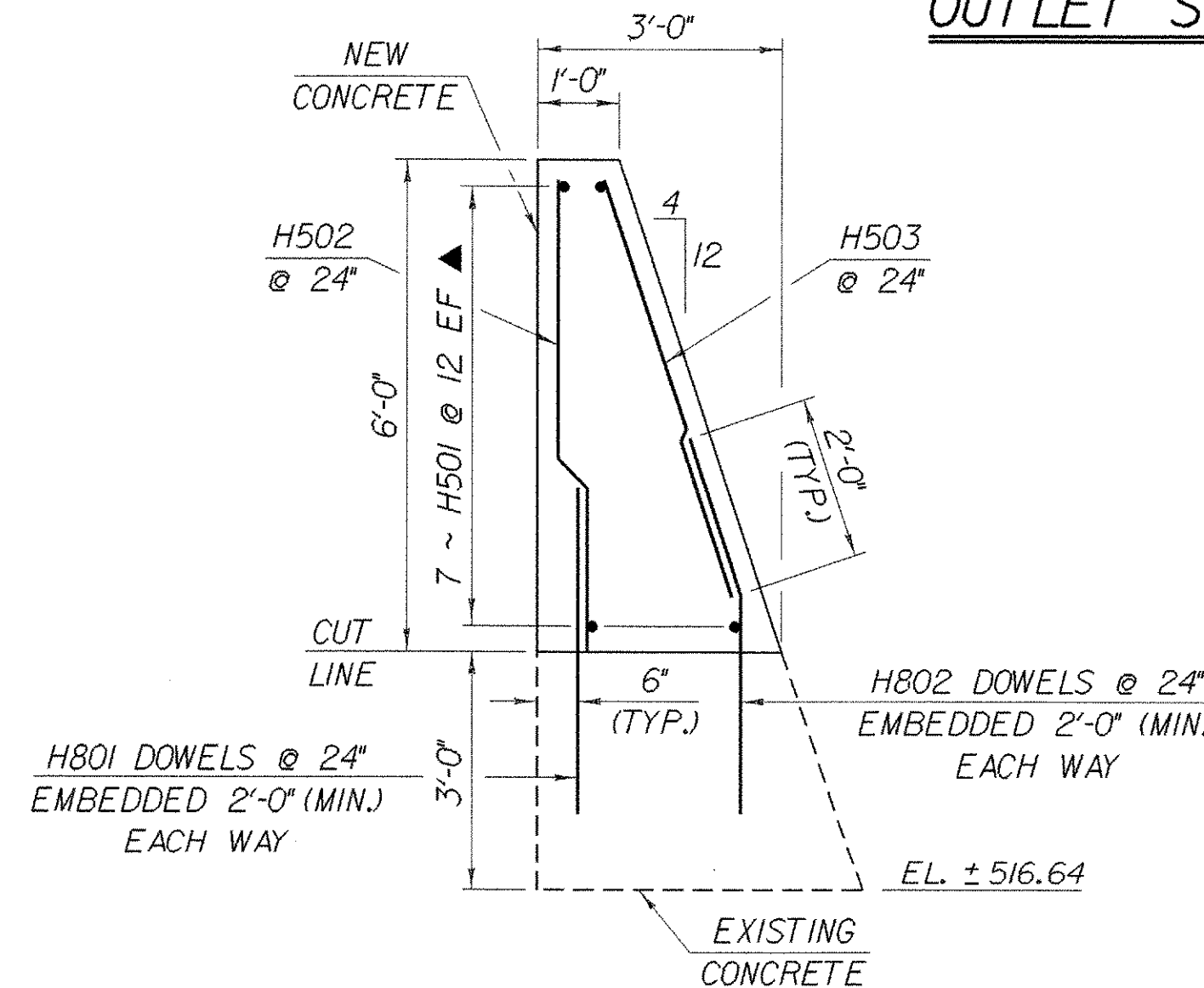
RESET EXISTING RIPRAP. PAYMENT SHALL BE MADE UNDER ITEM 613.12, "STONE FILL, TYPE III".

(1) ROW NEW GALVANIZED ANCHOR BOLTS PLACED IN EXISTING HOLES. PAYMENT SUBSIDIARY TO ITEM 501.25, "CONCRETE, CLASS B".



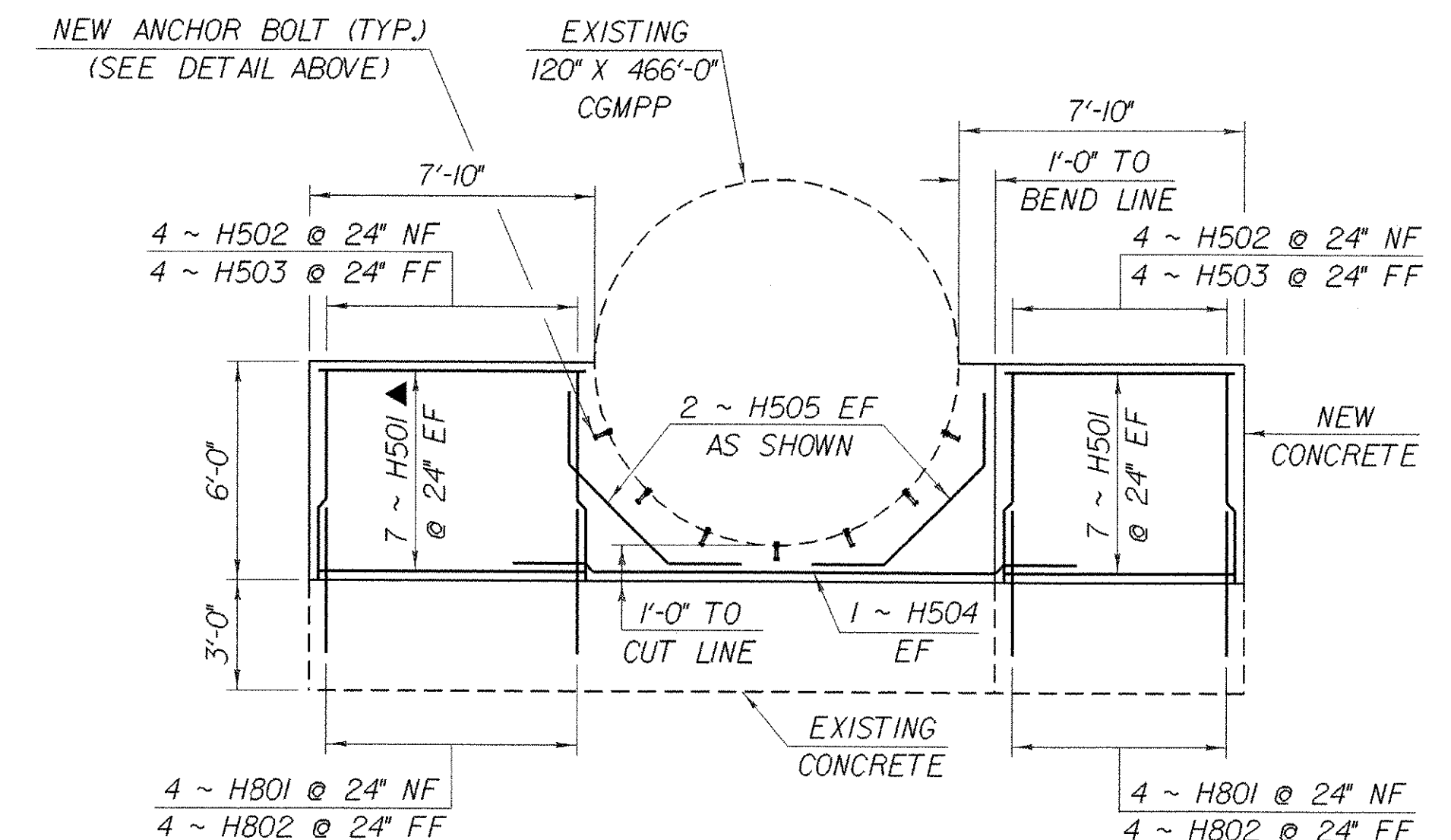
**OUTLET SECTION AT PIPE CENTERLINE**

SCALE 1/4" = 1'-0"



**OUTLET HEADWALL TYPICAL SECTION**

SCALE 1/2" = 1'-0"



**OUTLET HEADWALL ELEVATION**

SCALE 1/4" = 1'-0"

**NOTE:**

NF = NEAR FACE  
FF = FAR FACE  
EF = EACH FACE  
▲ = CUT TO FIT IN FIELD  
3" CLR. UNLESS OTHERWISE SPECIFIED ON THE PLANS.

**STATE OF VERMONT AGENCY OF TRANSPORTATION**

Town of FAIRFAX-FAIRFIELD-ST. ALBANS Bridge No. 86-5  
Highway No. 1-89 Log Sta. MM 111.28 Surv. Sta.

1-89 OVER THE MILL RIVER

86-5 HEADWALL DETAILS

Designed By M.LOZIER Drawn By K.CHISHOLM  
Checked By G.ROY Date 10/99 Bridge Design Supervisor R.R.WHITCOMB Date 10/99

PROJECT FAIRFAX-FAIRFIELD-ST. ALBANS PROJECT NO. 1M 089 - 3 (27)

I.G.C. Info. 96a056Structures\sa056p1.dgn sa056nwj  
Bridge Sheet No. BR101 Sheet 75 of 370

PLOTTED 21-SEP-2000