

SOUTHBOUND: 8' UNDERDRAIN (MODIFICATION # 1)

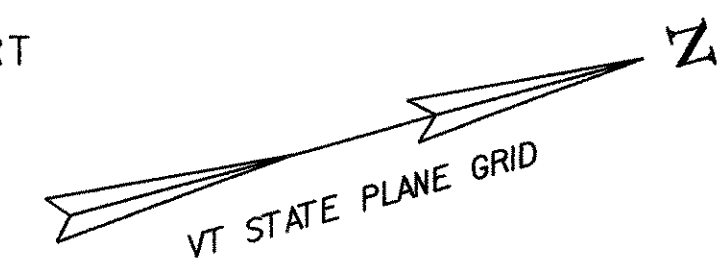
- (39) 3429+00 RT - 3432+54 RT W/FB @ 3432+54 RT
- (41) 3432+65 RT - 3439+66 RT W/FB @ 3436+25 RT & 3439+66 RT
- (43) 3439+70 RT - 3440+70 RT W/FB @ 3440+70 RT

SOUTHBOUND: 8' UNDERDRAIN (MODIFICATION # 2)

- (40) 3429+00 RT - 3432+58 RT W/FB @ 3432+58 RT
- (42) 3432+65 RT - 3439+66 RT W/FB @ 3436+25 RT & 3439+66 RT
- (44) 3439+70 RT - 3440+70 RT W/FB @ 3440+70 RT

SOUTHBOUND: 8' UNDERDRAIN CARRIER PIPE

- (42A) 3432+53 LT - 3432+65 RT W/FB @ 3432+65 RT
- (43A) 3439+70 RT W/FB @ 3439+70 RT

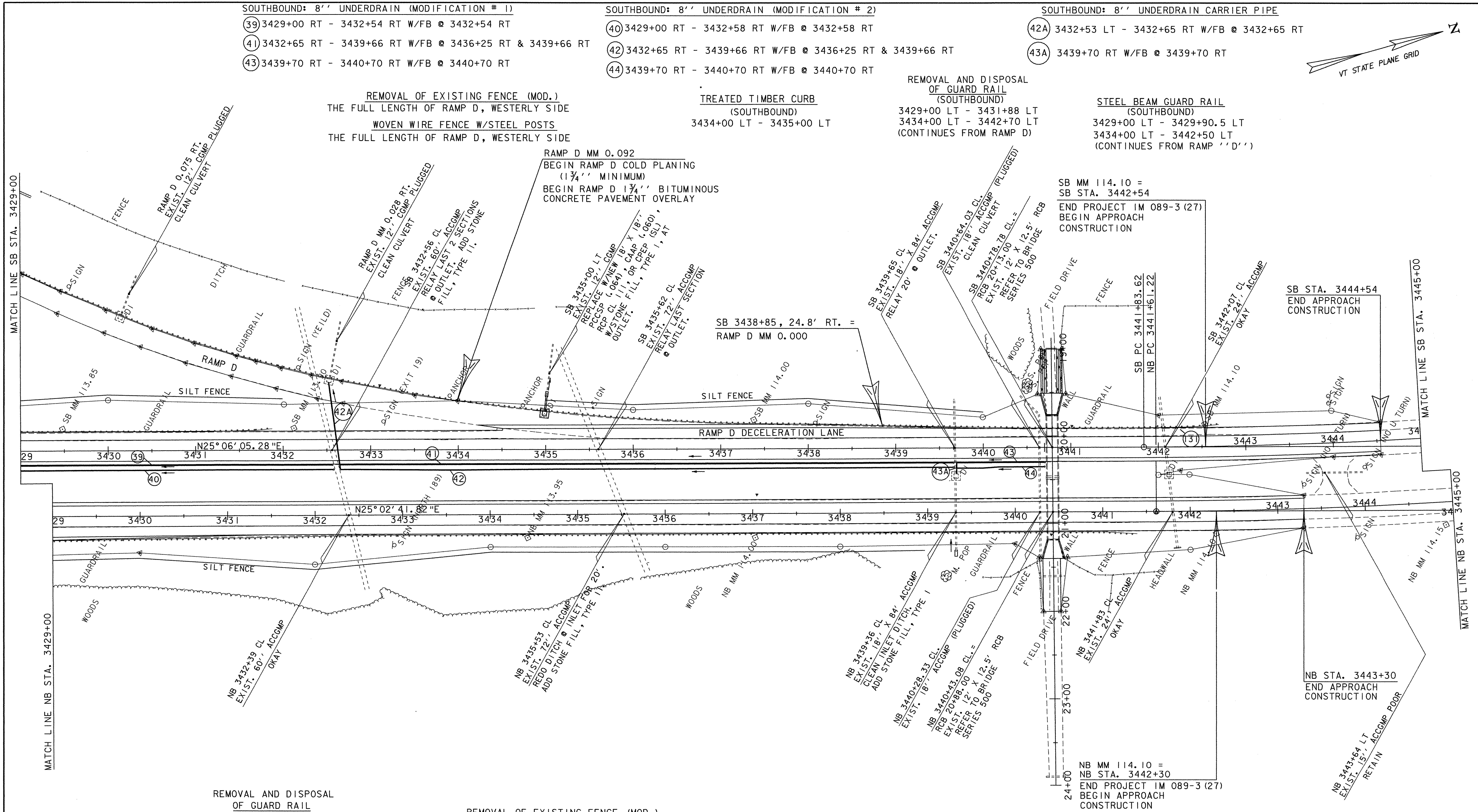


REMOVAL OF EXISTING FENCE (MOD.)
THE FULL LENGTH OF RAMP D, WESTERLY SIDE
WOVEN WIRE FENCE W/STEEL POSTS
THE FULL LENGTH OF RAMP D, WESTERLY SIDE

TREATED TIMBER CURB
(SOUTHBOUND)
3434+00 LT - 3435+00 LT

REMOVAL AND DISPOSAL
OF GUARD RAIL
(SOUTHBOUND)
3429+00 LT - 3431+88 LT
3434+00 LT - 3442+70 LT
(CONTINUES FROM RAMP D)

STEEL BEAM GUARD RAIL
(SOUTHBOUND)
3429+00 LT - 3429+90.5 LT
3434+00 LT - 3442+50 LT
(CONTINUES FROM RAMP 'D')



REMOVAL AND DISPOSAL
OF GUARD RAIL
(NORTHBOUND)
3429+00 RT - 3441+39 RT

STEEL BEAM GUARD RAIL
(NORTHBOUND)
3429+00 RT - 3441+43.3 RT

REMOVAL OF EXISTING FENCE (MOD.)
STA. 3432+50 NB RT
STA. 3438+00 NB RT - STA. 3442+30 NB RT

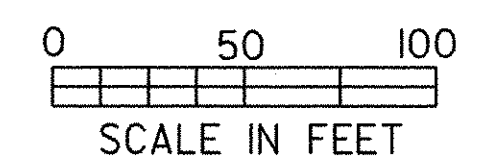
WOVEN WIRE FENCE W/STEEL POSTS
STA. 3432+50 NB RT
STA. 3438+00 NB RT - STA. 3442+30 NB RT

NB MM 114.10 =
NB STA. 3442+30
END PROJECT IM 089-3 (27)
BEGIN APPROACH
CONSTRUCTION

NB STA. 3443+30
END APPROACH
CONSTRUCTION

SB STA. 3444+54
END APPROACH
CONSTRUCTION

DATUM
VERTICAL NAVD88
HORIZONTAL NAD83(92)



PROJECT: FAIRFAX - FAIRFIELD - ST. ALBANS		PROJECT NO.: IM 089-3(27)
DESIGN FILE NAME: /87A007B/DESIGN/DA007N1.DGN	PLOT DATE: 03-OCT-2000	
IPARM FILE NAME: DA007L1	SURVEY DATE: 6/98	
SQUAD LEADER: DELLA SANTA	DRAWN BY: SQUAD B	
		SHEET: 69 OF 370