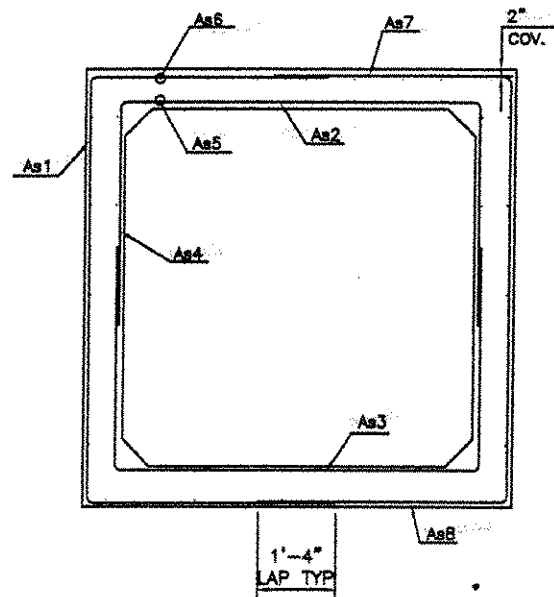


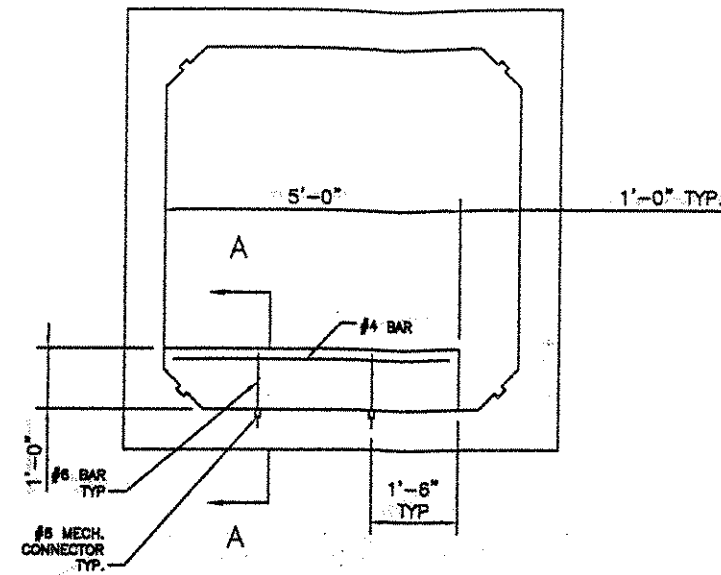
MK	Size	Spcc	Len	Type	A	B	C
As1	4	12	127"	U	1'-9"	7'-1"	1'-9"
As2	5	6	86"	Str.	---	7'-2"	---
As3	5	6	86"	Str.	---	7'-2"	---
As4	4	12	84"	Str.	---	7'-0"	---
As5	4	12	85"	Str.	---	7'-1"	---
As6	4	12	85"	Str.	---	7'-1"	---
As7	4	12	86"	Str.	---	7'-2"	---
As8	4	12	86"	Str.	---	7'-2"	---

REBAR REINFORCEMENT TABLE

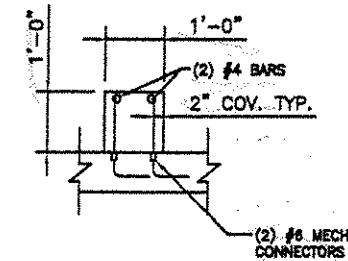


MK	As REQ. in'
As1	0.192
As2	0.432
As3	0.454
As4	0.192
As5	0.192
As6	0.192
As7	0.192
As8	0.192

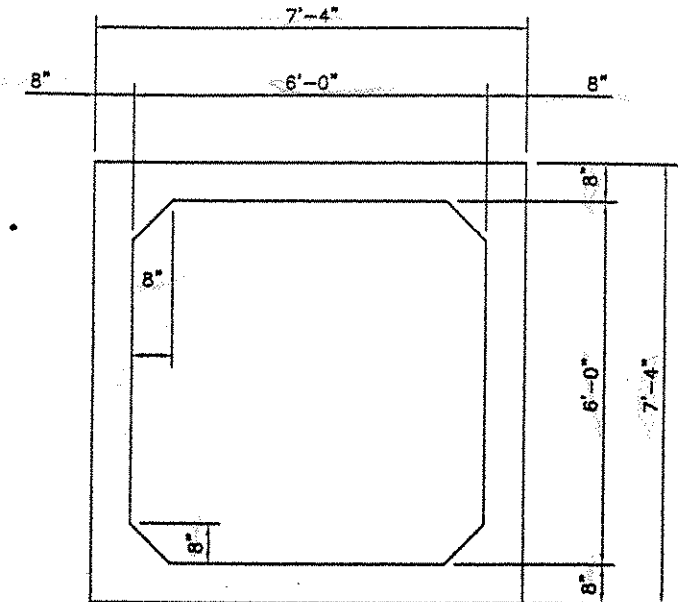
MESH REINFORCEMENT TABLE



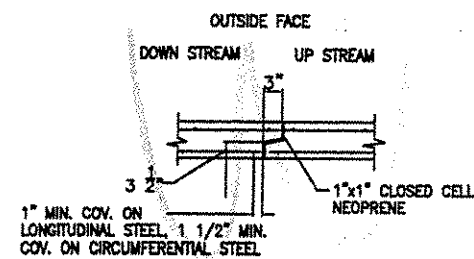
BAFFLE DETAIL



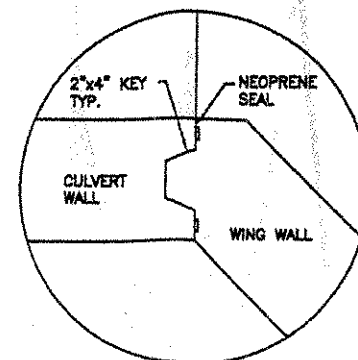
SECTION A-A



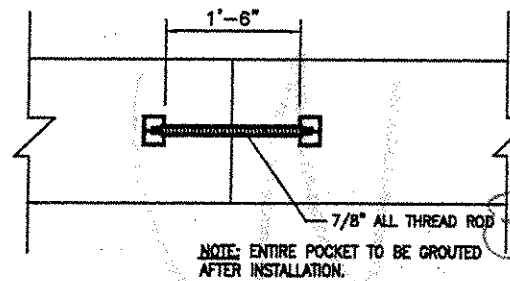
SECTION A-2



JOINT DETAIL



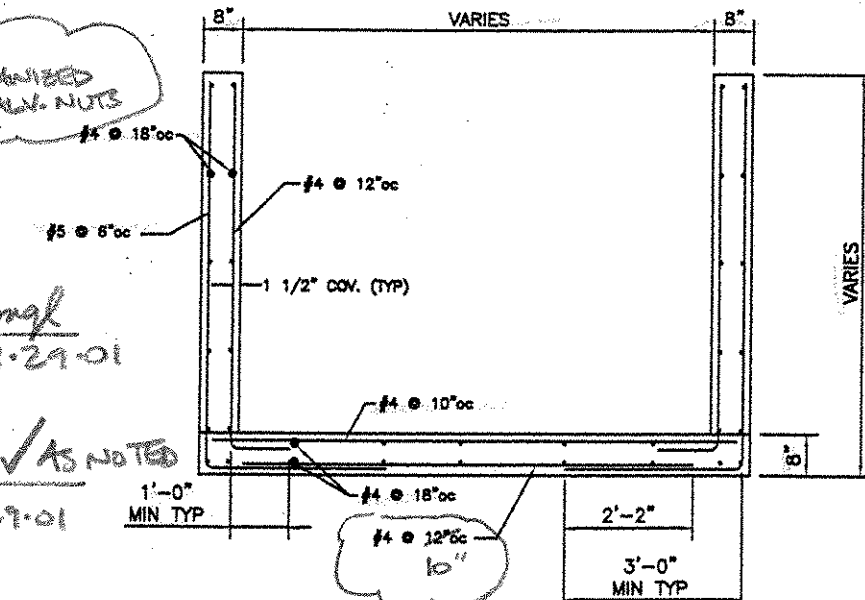
DETAIL B-2



RECESSED DRAW CONNECTOR (4 PER SECTION)

V.A.O.T. RECEIVED
 CKD BY *C. Boy* CKD BY *mgl*
 3-21-01 3-29-01
 MAR 21 2001
 RESUBMIT *01 mgl* APPROVED *AS NOTED* DATE 3-29-01

CALL FOR W/ GALV. NUTS



TYPICAL END SECTION



Ralph Verrastro
 2/21/01



TOWN OF ST. ALBANS, VT.		SHEET 3 OF 3
6'-0" x 6'-0" x 104'-0" BR 87-3 SOUTHBOUND		
CONTRACTOR:	465	CAMP PRECAST CONCRETE PRODUCTS
ENGINEER:		
DWN BY: GAS	CKD BY: RET	