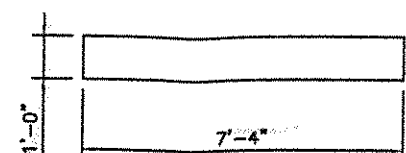
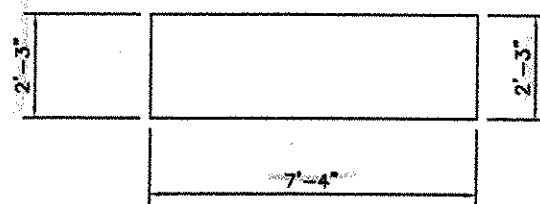


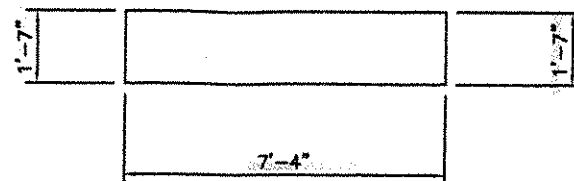
HEADWALL H1 PLAN VIEW



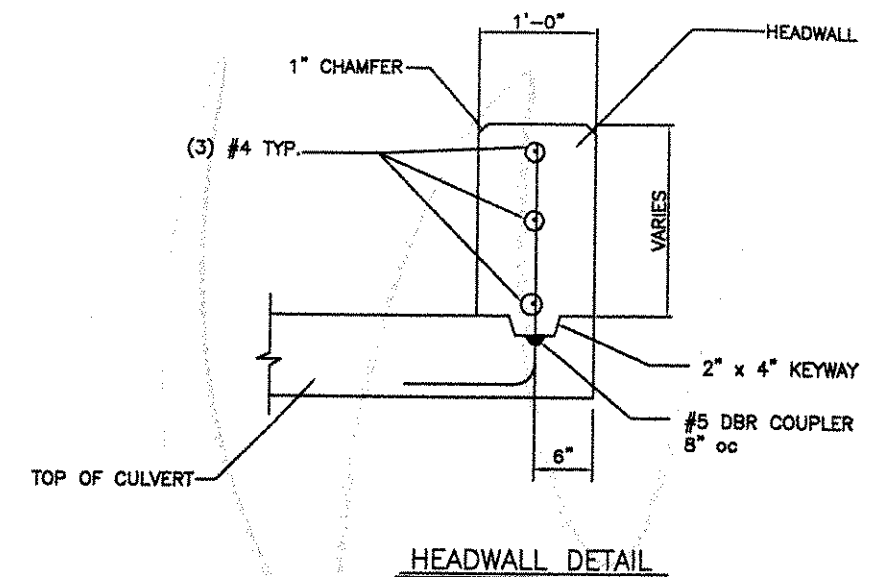
HEADWALL H2 PLAN VIEW



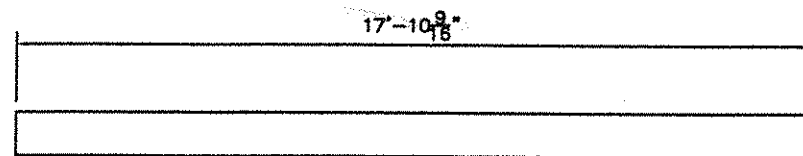
HEADWALL H1 ELEVATION VIEW



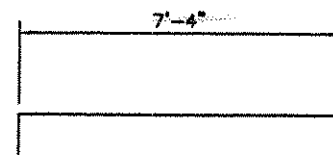
HEADWALL H2 ELEVATION VIEW



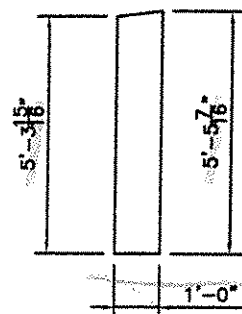
HEADWALL DETAIL



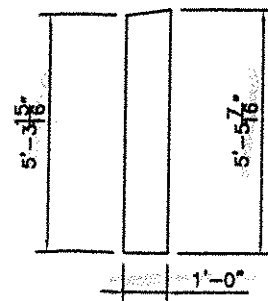
CUTOFF WALL C1 PLAN VIEW



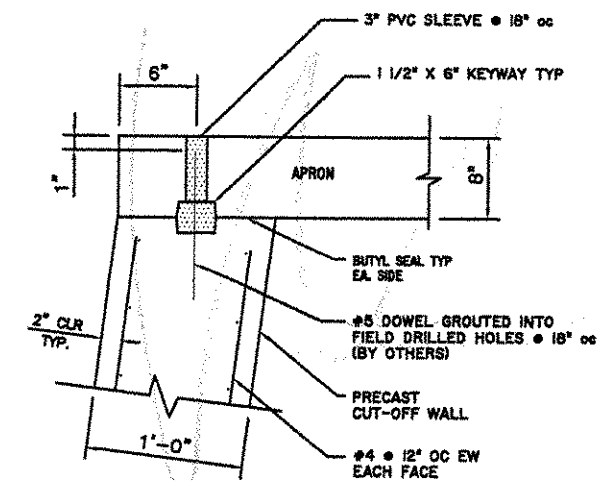
CUTOFF WALL C2 PLAN VIEW



CUTOFF WALL C1 END VIEW



CUTOFF WALL C2 END VIEW



CUTOFF WALL DETAIL

V.A.O.T.
 RECEIVED
 OKD BY *C. Pop* OKD BY *mgl*
 3-21-01 3-29-01
 MAR 21 2001
 RESUBMIT APPROVED ✓
 BY *mgl* DATE 3-29-01



Ralph Verrastro
 2/21/01

DELTA ENGINEERS, P.C. ENGINEERS • ARCHITECTS <small>84 COURT STREET, BARRINGTON, NH 03024 TEL: 603 23-8000 FAX: 603 23-8000</small>	TOWN OF ST. ALBANS, VT. 6'-0" x 6'-0" x 104'-0" BR 87-3 SOUTHBOUND		SHEET 2 OF 3 CAMP PRECAST CONCRETE PRODUCTS
	CONTRACTOR: DWN BY: GAS	ENGINEER: 464 CKD BY: RET	