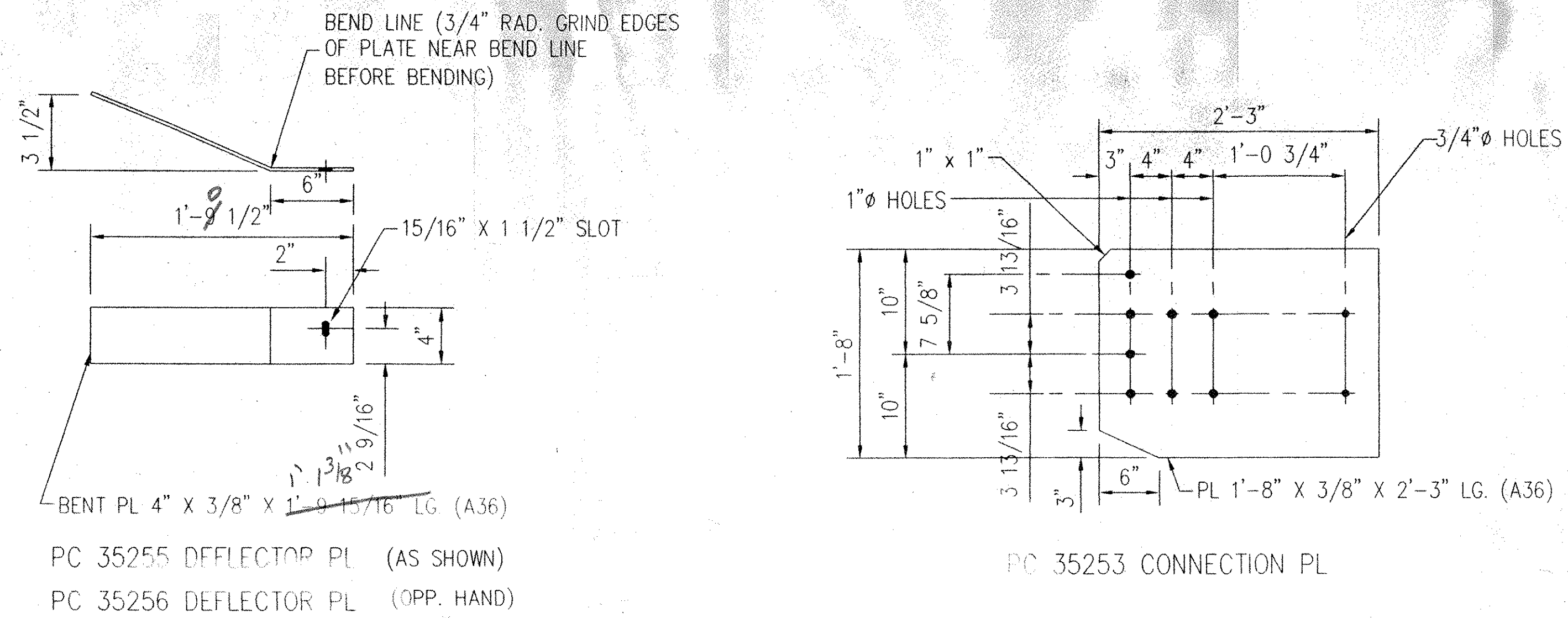
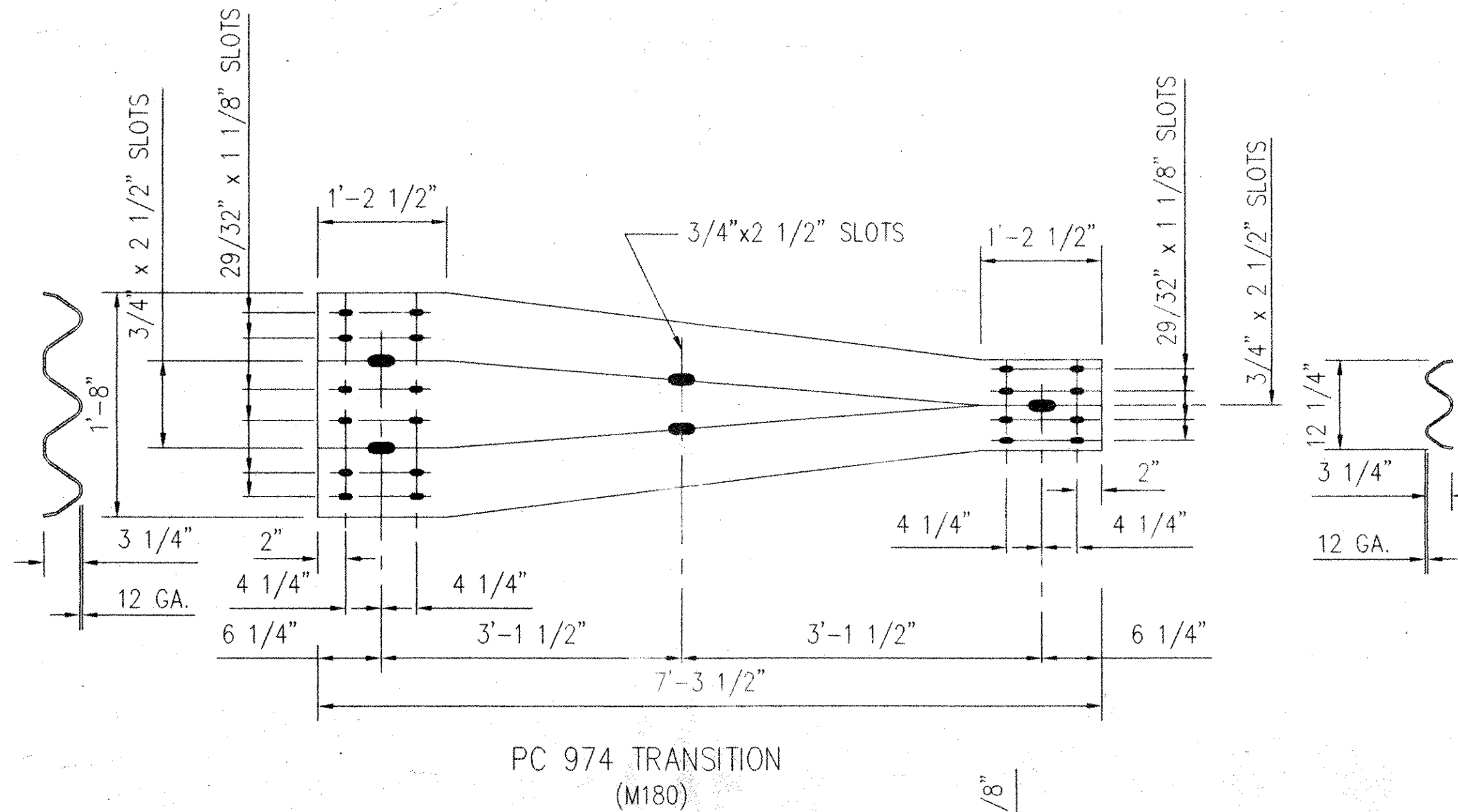


PC 24808 POST



PC 35255 DEFLECTOR PL (AS SHOWN)
PC 35256 DEFLECTOR PL (OPP. HAND)

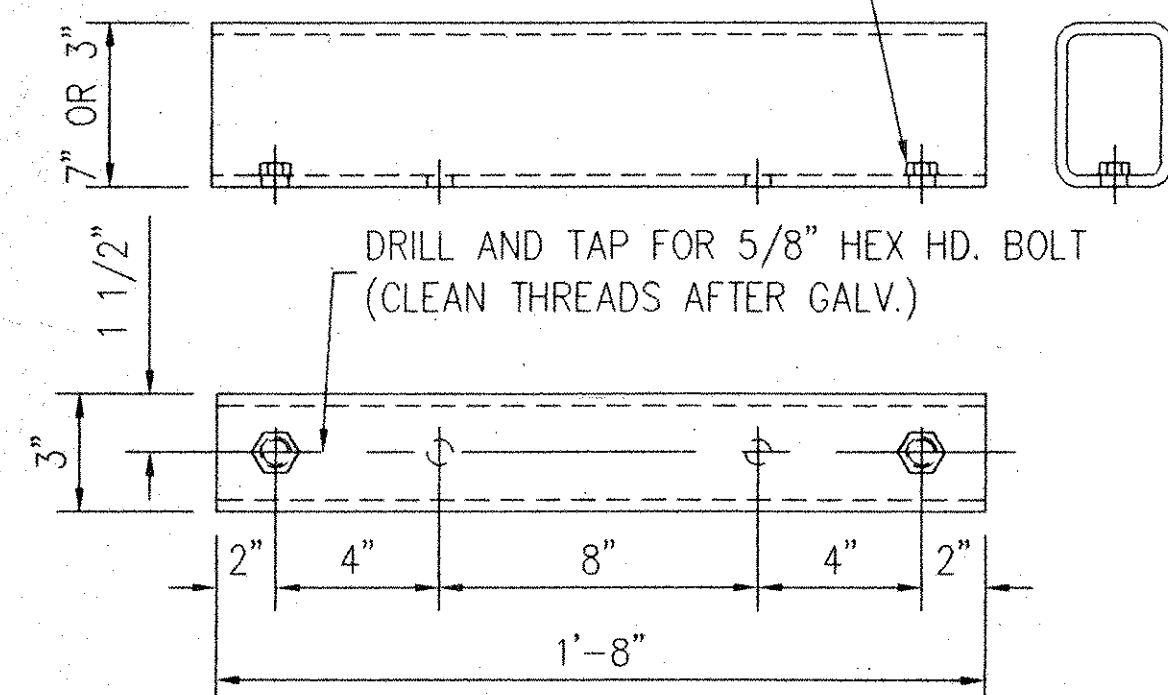
PC 35253 CONNECTION PL



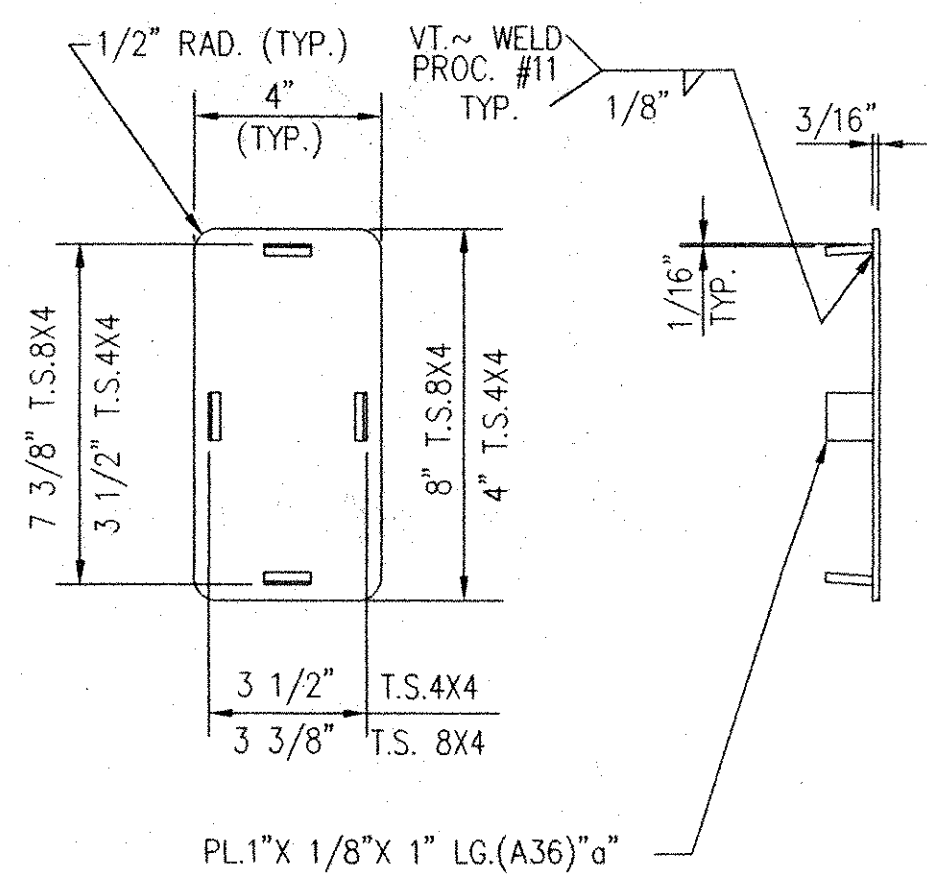
PC 974 TRANSITION (M180)

TACK WELD LOCK NUT PC 3352G AFTER GALV. BOTH ENDS OF SPLICE. ONLY REPAIR GALV. AS NECESSARY.

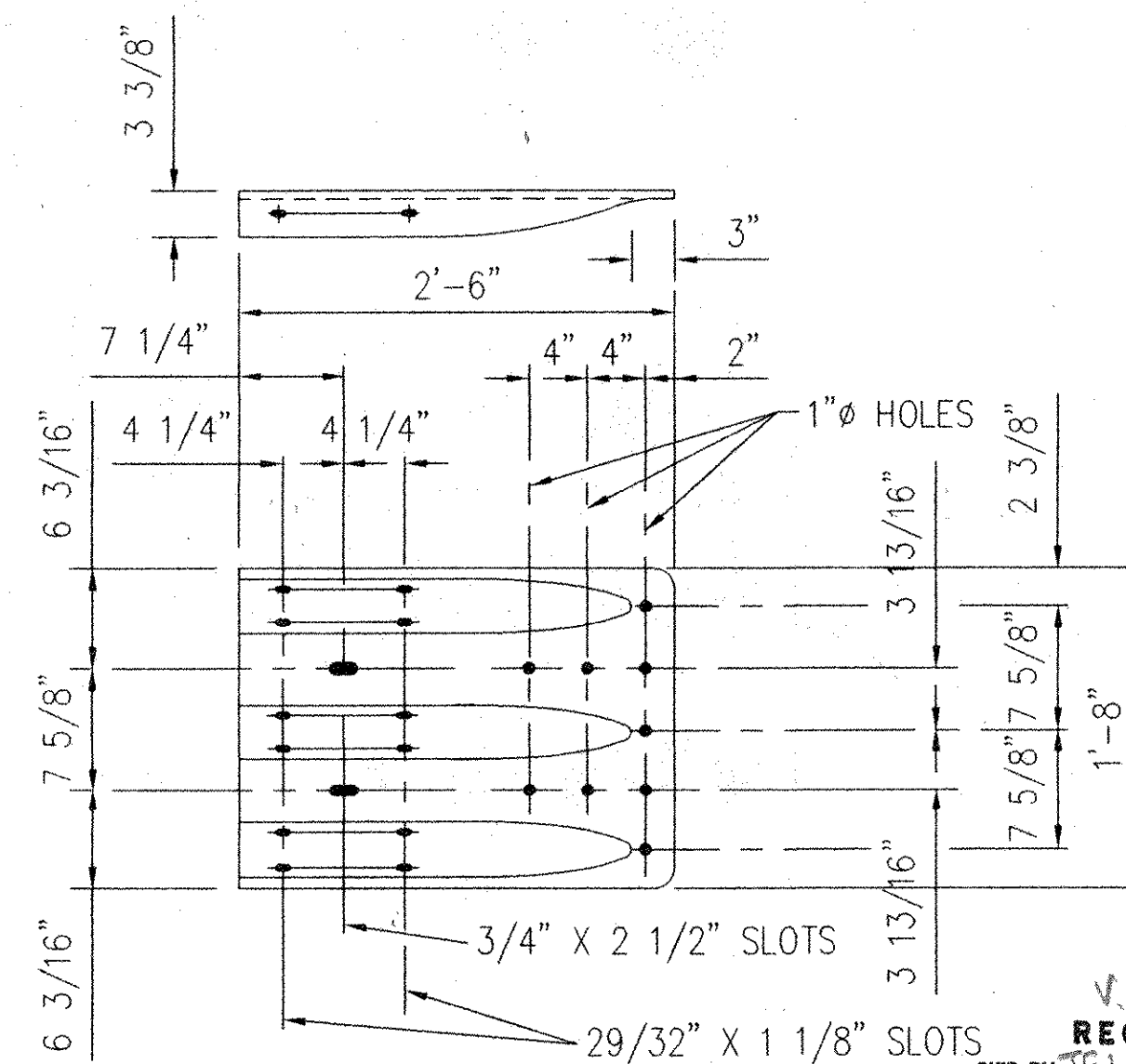
FOR PROPER ALIGNMENT OF THE NUT, A BOLT MUST BE PLACED THRU THE TAPPED HOLE AND NUT THEN TACKWELD IN PLACE



PC 35103 BOTTOM SPLICE TS 3" x 3" x 5/16" (A500 GR B)



P.C.~32876 8" x 4" END CAP
P.C.~32877 4" x 4" END CAP



PC 35200 TRI-GARD TERMINAL 10 GA. (M180)

VA DOT RECEIVED
OK'D BY [Signature] OK'D BY [Signature]
5/30/01 6/4/01
MAY 24 2001
RESUBMIT APPROVED [Signature]
BY G. Roy DATE 6/2/01

This drawing and the information shown thereon is the sole property of TRINITY INDUSTRIES, INC. Neither the drawing nor such information is to be used for any purpose other than that for which it was specifically furnished by TRINITY INDUSTRIES, INC., nor is any reproduction authorized without written permission.

BILL OF MATERIAL

PRODUCT CODE	QTY	DESCRIPTION	WT EACH	REMARKS
24808G	64	W6 x 25# x 8'-0" POST	212 #	
974G	16	TRANSITION	76 #	
35200A	16	TRI-GARD TERMINAL	34 #	
35253G	16	CONN. PL 1'-8" x 3/8" x 2'-3"	60 #	
35255G	8	DEFLECTOR PL 4" x 3/8" x 1'-0 3/4"	10 #	AS SHOWN
35256G	8	DEFLECTOR PL 4" x 3/8" x 1'-0 3/4"	10 #	OPP. HAND
32876A	16	TOP END CAP 8" x 4"	2 #	
32877A	16	BOTTOM END CAP 4" x 4"	1 #	
35209G	128	PIPE SPACER (3/4" SCH. 40 X 1/2")	.01 #	(A53) (GALV A123) NOT DETAILED
35103A	16	BOTTOM SPLICE TS 3" x 3" x 5/16"	19 #	

HARDWARE

PRODUCT CODE	QTY	DESCRIPTION	REMARKS
3310G	128	5/8" LOCKWASHER	F436 GALV. A153
3300G	128	5/8" WASHER	F844 GALV. A153
3320G	304	PLATE WASHER	A36 A123 NOT DETAILED
3340G	384	5/8" HGR NUT	A563 GR. A GALV. A153
3386G	384	5/8" x 1 1/2" HGR BOLT	A307 GR A GALV. A153
3390G	128	5/8" x 1 3/4" HEX HD. BOLT	A307 GR A GALV. A153
3446G	128	5/8" WASHER, 1 3/4" O.D.	TYPE A HARDENED F436 GALV. A153
3580G	304	5/8" x 1'-6" HGR BOLT	A307 GR A GALV. A153
3669G	16	3/4" x 2" CARRIAGE BOLT	A307 GR. A GALV. A153
3702G	256	3/4" WASHER, 2" O.D.	TYPE A HARDENED F436 GALV. A153
3704G	256	3/4" HEX NUT	A563 OH GALV. A153
3710G	256	3/4" HEX NUT	A563 GR. A GALV. A153
4789G	112	3/4" x 6" CARRIAGE BOLT	A307 GR. A GALV. A153
3637G	256	3/4" x 6" WRENCH HD. BOLT	A325 GALV. A123

PAY QUANTITY

472 LIN. FT	ITEM 621.72 (16 RUNS @ 29'-5")	APPROACH RAIL, TYPE T-2
-------------	--------------------------------	-------------------------

APPROVAL DRAWING

SEE NOTES ON SHEET 30-102392-D1
ERECTION DETAILS ARE ON SHEET 30-102392-D1

GIRARD ENGINEERING DEPT.
ISSUED
MAY 17 2001
TRINITY INDUSTRIES, INC.
1170 N. STATE STREET
GIRARD, OHIO 44420

REV.	CHK'D	BY	DATE	REMARKS

PAY ITEM 621.72 BRIDGE APPROACH RAIL T2		DRAWN	SAR
STATE OF VERMONT DEPARTMENT OF TRANSPORTATION INTERSTATE 89		CHECKED	S.H.
TOWNS OF FAIRFAX, FAIRLAND & ST. ALBANS COUNTY OF FRANKLIN STATE PROJECT NO. M-089-3 (27) BRIDGE NO. 87/88		SCALE	N.T.S.
CUSTOMER	NORTHLAND SPECIALTIES	P.O. No.	VERBAL
DATE	4/27/01	ENG. FILE #	30-102392-D2
		SHT. No.	D2 OF 2
		TRINITY INDUSTRIES, INC. 421	
		HIGHWAY SAFETY PRODUCTS	
		2525 STEMMONS FREEWAY, DALLAS, TX 75207	
		TRINITY SALES ORDER NO.	REV
		(30) 102392	0

F:\R\Share\Engineering\WIP\VT\02392\30-10240.dwg Thu May 17 13:34:22 2001 PLOTTED BY: STATION 1