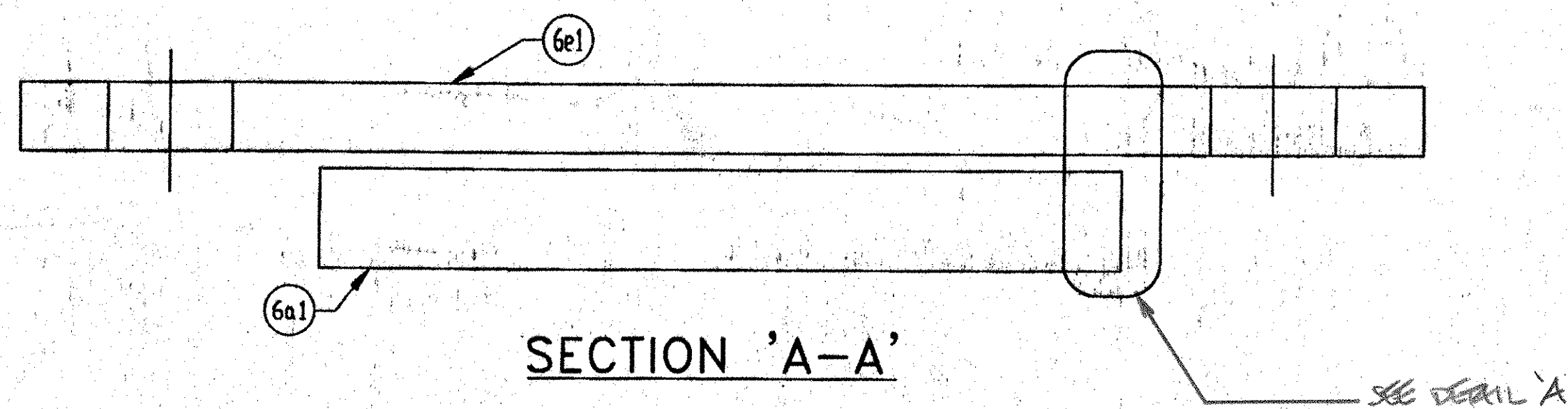
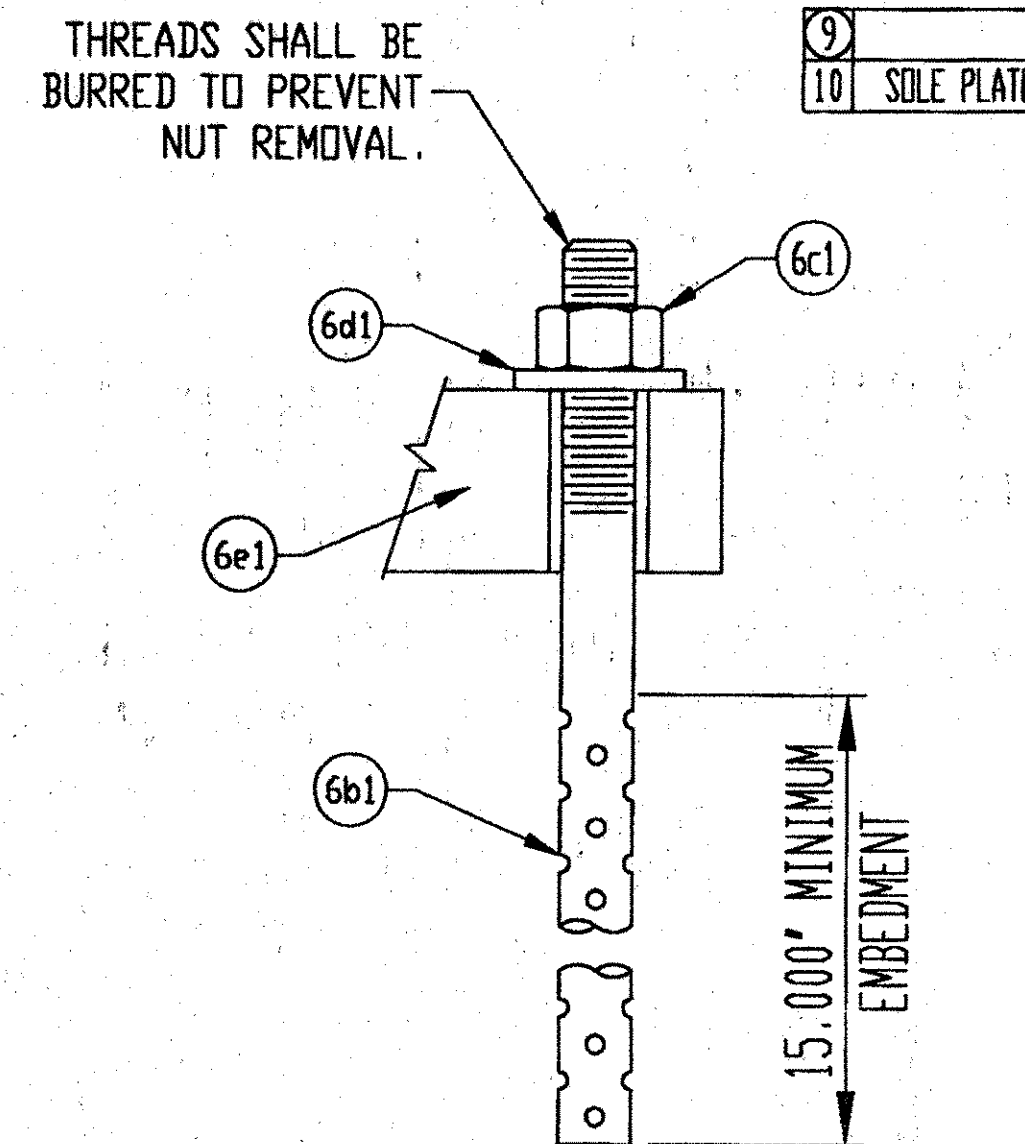


**PLAN VIEW**

MARK: 2201-1104-F  
 FIXED BEARING  
 (7) REQ'D @ ABUT. 7  
 (7) TOTAL REQ'D

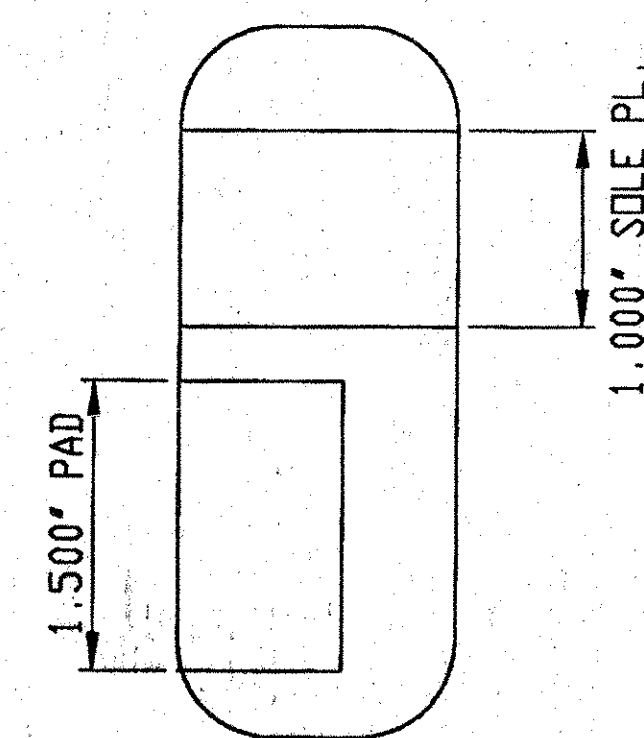


**SECTION 'A-A'**



**ANCHOR ASSEMBLY DETAIL**

ALL MATERIALS AND CONSTRUCTION SHALL CONFORM TO STATE OF VERMONT AGENCY OF TRANSPORTATION STANDARD SPECIFICATIONS FOR CONSTRUCTION DATED 1990, AND ITS LATEST REVISIONS, AND THE AASHTO STANDARD SPECIFICATIONS FOR HIGHWAY BRIDGES, DATED 1996, AND ITS LATEST REVISIONS.



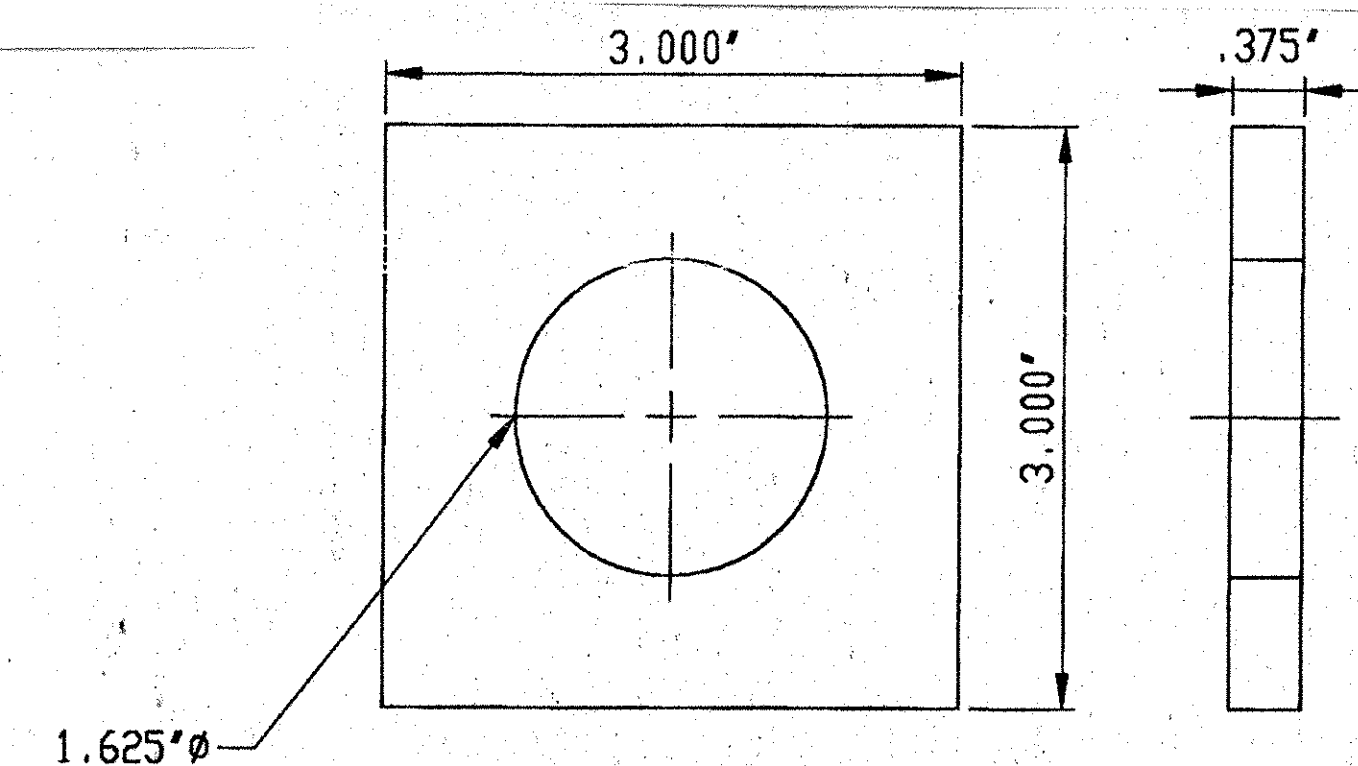
**DETAIL 'A'**

LINE	PART	MARK	NO. REQ'D	DESCRIPTION	REMARKS
1		6A	7	PREFORMED FABRIC PAD	
2	FABRIC PAD	6a1	7	1.500" X 8.000" X 12.000"	VERMONT SPEC. 731.01, AASHTO 18.4.10.1
3		6B	28	SWEDGE ANCHOR ROD	
4	SWEDGE ANCHOR ROD	6b2	28	1.50" X 21.000" #14" THREADED, 15' MIN. SWEDGED	ASTM A 36, GALVANIZED A153
5		6C	28	HEAVY HEX NUT	
6	HEAVY HEX NUT	6c1	28	1.50"	ASTM A-307 GR. DH, GALVANIZED A153
7		6D	28	WASHER PLATE	
8	WASHER PLATE	6d1	28	.375" X 3.000" X 3.000" w/ 1.625" R HOLE	ASTM A 36, GALVANIZED A123
9		6E	7	SOLE PLATE	
10	SOLE PLATE	6e1	7	1.000" X 13.000" X 21.000"	ASTM A709 GR. 36, GALVANIZED A123

**GENERAL NOTES:**

- PAD AND MATERIALS SHALL CONFORM TO VERMONT DEPARTMENT OF TRANSPORTATION DIVISION OF HIGHWAYS SPECIFICATIONS FOR 531 & 731. *AG 531*  
STANDARD SPECIFICATIONS FOR CONSTRUCTION SECTIONS
- THESE SHOP DRAWINGS WERE PREPARED IN ACCORDANCE WITH THE CONTRACT PLANS AND SPECIFICATIONS. THE D.S. BROWN COMPANY DOES NOT ACCEPT LIABILITY FOR THE DESIGN OF THE PRODUCTS DETAILED IN THESE SHOP DRAWINGS.
- THE BEARINGS SHALL BE SUBJECTED TO RANDOM IN-HOUSE ELASTOMER TESTING AND RANDOM IN-HOUSE PROOF LOAD TESTING IN ACCORDANCE WITH AASHTO DIVISION I, SECTION 14 (METHOD "A") AND AASHTO DIVISION II, SECTION 18.
- THE D.S. BROWN COMPANY IS TO ONLY SUPPLY THE PARTS SHOWN ON THIS DRAWING.

SURFACES TO BE GALVANIZED OR METALIZED. PRIOR TO GALVANIZING OR METALIZING, ALL CORNERS AND EDGES OF STEEL PLATES, SHAPES, ETC., SHALL BE GROUNDED TO A 1/16 INCH RADIUS.



**WASHER PLATE DETAIL**

V.A.O.T. RECEIVED  
 CHK'D BY *mgl* OK'D BY *mgl*  
 2/28/01  
 FEB 26 2001  
 RESUBMIT APPROVED *V.A.S. NOTED*  
 BY *mgl* DATE 3/8/01

D.S. BROWN 2201-1106-6, 7 OF 7  
 SHEET 6 OF 7

	DATE SYM REVISION DR CK			
	THE D.S. BROWN COMPANY, INC. NORTH BALTIMORE, OHIO 45872-0158 U.S.A.			
F.A.P. NO.: - STATE PROJ. NO.: IM-089-3(27) BRIDGE NO: 88N DESIGNER: VT AGENCY OF TRANSPORTATION CONTRACTOR: J.A. MCDONALD	SCALE: N/A DATE: 1/19/01 CHECKED BY: <i>E. K. O'Connell</i> DRAWN BY: <i>B. COPPUS</i>	1-89 OVER ST. ALBANS S. STATE HIGHWAY (EXIT 19) FRANKLIN COUNTY VERMONT	DRAWING NUMBER 2201-1106-06	PREFORMED FABRIC BEARING