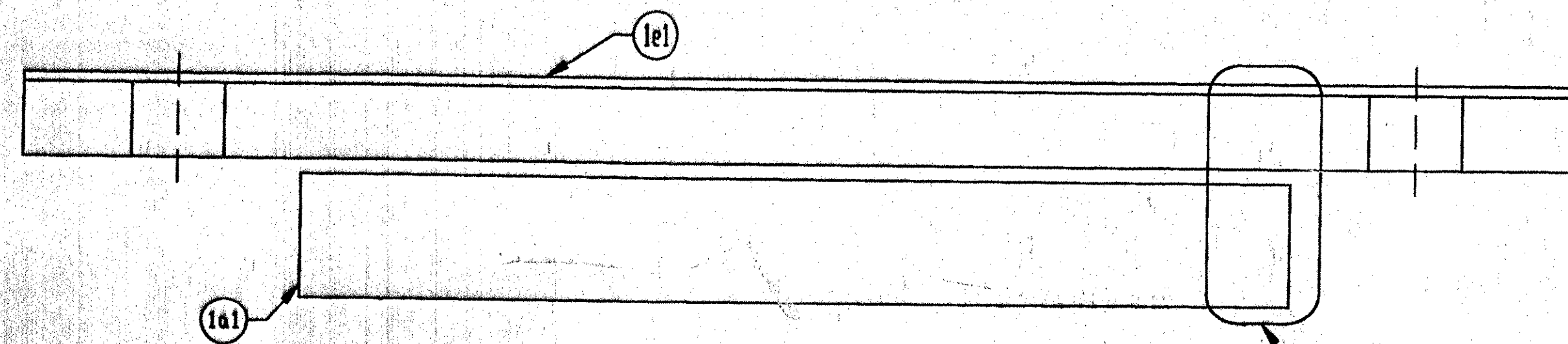


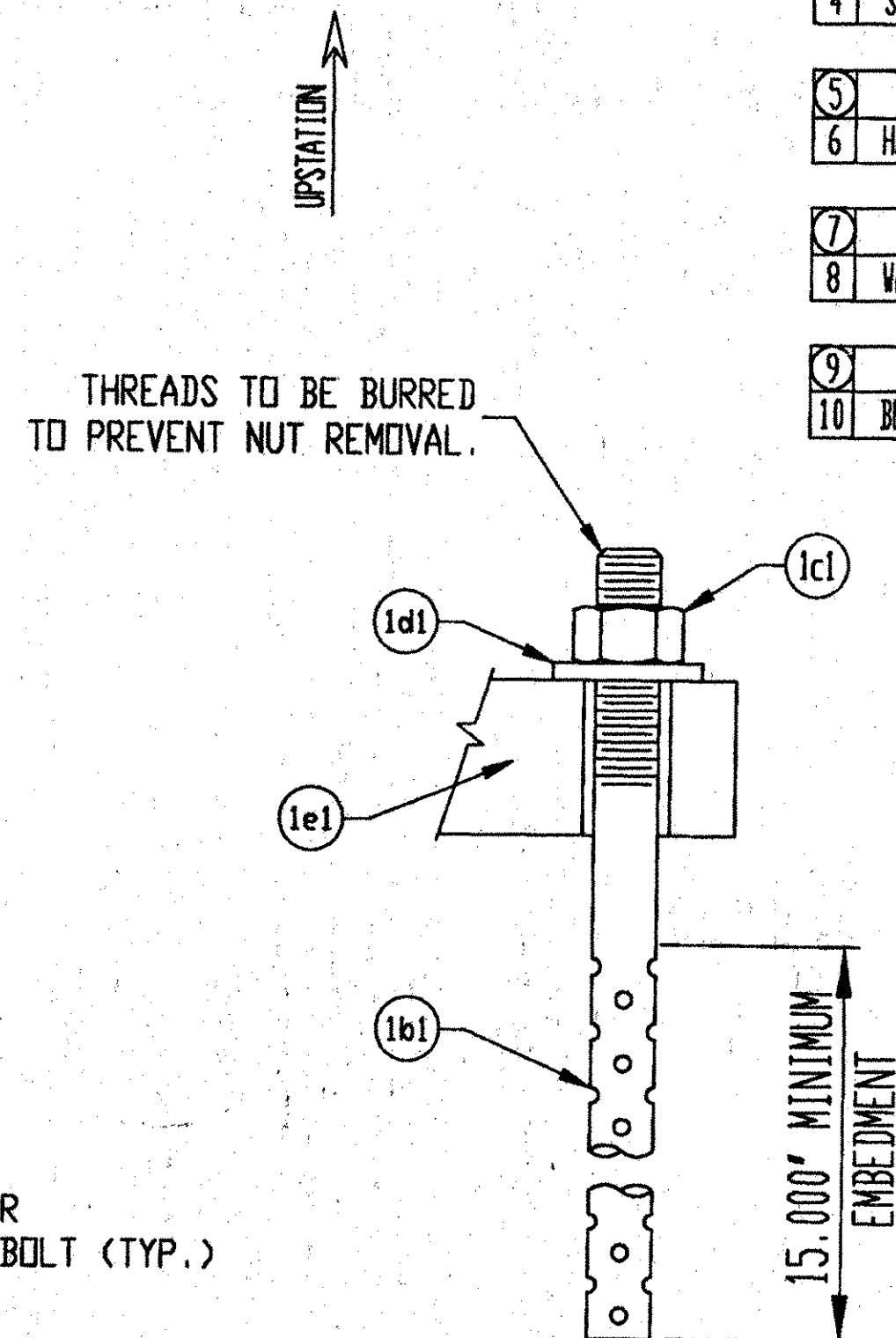
PLAN VIEW

MARK: 2201-1104-A
 FIXED BEARING
 (5) REQ'D @ ABUT. 1
 (5) REQ'D @ ABUT. 3
 (10) TOTAL REQ'D



SECTION 'A-A'

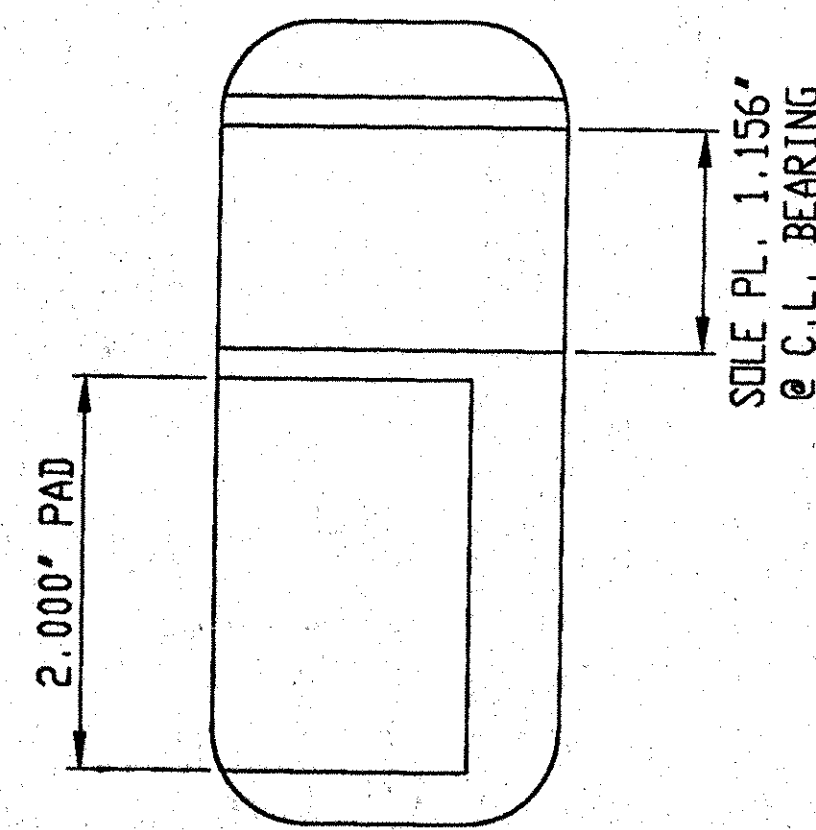
SEE DETAIL 'A'



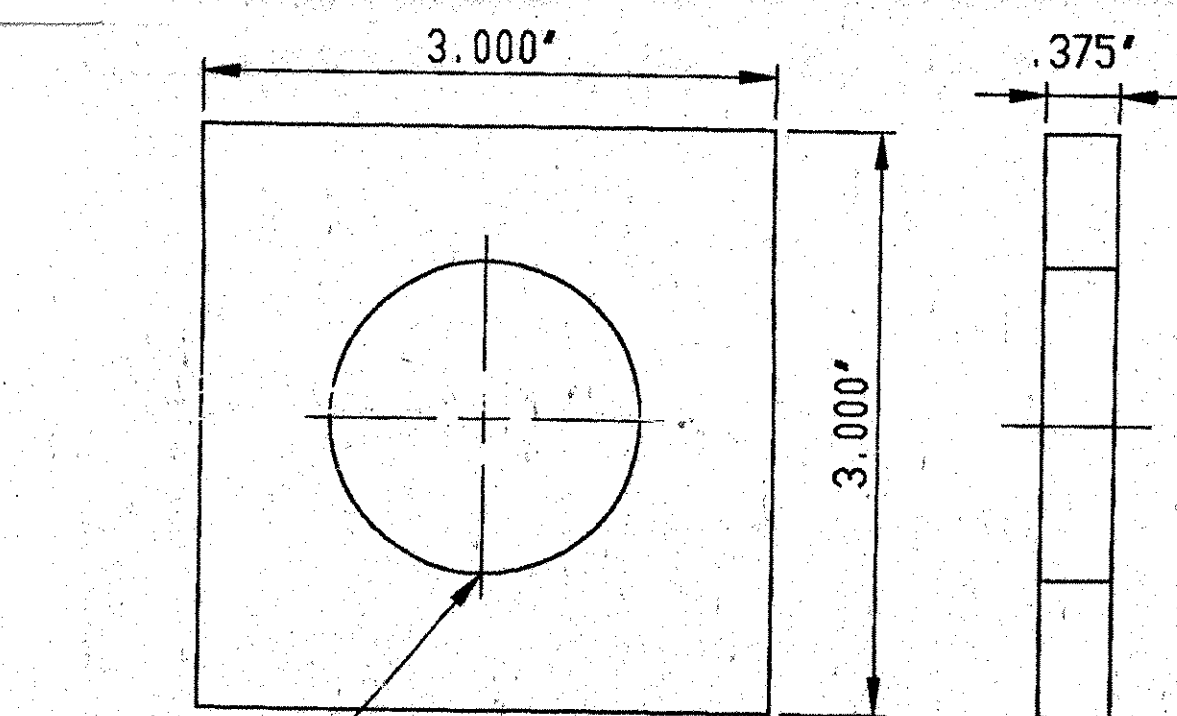
ANCHOR ASSEMBLY DETAIL

ALL MATERIALS AND CONSTRUCTION SHALL CONFORM TO STATE OF VERMONT AGENCY OF TRANSPORTATION STANDARD SPECIFICATIONS FOR CONSTRUCTION DATED 1990, AND ITS LATEST REVISIONS, AND THE AASHTO STANDARD SPECIFICATIONS FOR HIGHWAY BRIDGES, DATED 1996, AND ITS LATEST REVISIONS.

SU1 OR METALIZED. PRIOR TO GALVANIZING OR ME1 AND EDGES OF STEEL PLATES, SHAPES, ETC., SH2 1/2 INCH RADIUS.



DETAIL 'A'



WASHER PLATE DETAIL

V.A.O.T. RECEIVED
 OK'D BY *mgl* OK'D BY *3/23/01*
 FEB 26 2001
 RESUBMIT APPROVED *AS NOTED*
 BY *mgl* DATE 3-8-01

LINE	PART	MARK	NO. REQ'D	DESCRIPTION	REMARKS
1		1A	10	PREFORMED FABRIC PAD	
2	FABRIC PAD	1a1	10	2.000' X 10.000' X 16.000'	VERMONT SPEC. 731.01, AASHTO 18.4.10.1
3		1B	20	SWEDGE ANCHOR ROD	
4	SWEDGE ANCHOR ROD	1b1	20	1.50 X 21.000' MIN. W/4" THREADED, 15' MIN. SWEDGED	ASTM A 36, GALVANIZED A153
5		1C	20	HEAVY HEX NUT	
6	HEAVY HEX NUT	1c1	20	1.50"	ASTM A-307 GR. DH, GALVANIZED A153
7		1D	20	WASHER PLATE	
8	WASHER PLATE	1d1	20	3.75" X 3.000" X 3.000" W/ 1.625" HOLE	ASTM A 36, GALVANIZED A123
9		1E	10	SOLE PLATE	
10	BEVELED SOLE PLATE	1e1	10	1.3125"-1.000" X 14.000" X 25.000"	ASTM A709 GR. 36, GALVANIZED A123

GENERAL NOTES:

- PAD AND MATERIALS SHALL CONFORM TO VERMONT AGENCY OF TRANSPORTATION DIVISION OF HIGHWAYS SPECIFICATIONS FOR 531 & 731. *STANDARD SPECIFICATIONS FOR CONSTRUCTION SECTIONS*
- THESE SHOP DRAWINGS WERE PREPARED IN ACCORDANCE WITH THE CONTRACT PLANS AND SPECIFICATIONS. THE D.S. BROWN COMPANY DOES NOT ACCEPT LIABILITY FOR THE DESIGN OF THE PRODUCTS DETAILED IN THESE SHOP DRAWINGS.
- THE BEARINGS SHALL BE SUBJECTED TO RANDOM IN-HOUSE ELASTOMER TESTING AND RANDOM IN-HOUSE PROOF LOAD TESTING IN ACCORDANCE WITH AASHTO DIVISION I, SECTION 14 (METHOD "A") AND AASHTO DIVISION II, SECTION 18.
- THE D.S. BROWN COMPANY IS TO ONLY SUPPLY THE PARTS SHOWN ON THIS DRAWING.

D.S. BROWN

2201-1106-1, 10 OF 10
 SHEET 1 OF 7

	DATE	SYM	REVISION	DR	CK
F.A.P. NO.: - STATE PROJ. NO.: IM-089-3(27) BRIDGE NO.: 87 N & S DESIGNER: VT AGENCY OF TRANSPORTATION CONTRACTOR: J.A. McDONALD					
THE D.S. BROWN COMPANY, INC. NORTH BALTIMORE, OHIO 45872-0158 U.S.A. SCALE: N/A DATE: 1/19/01 CHECKED BY: <i>E. Kelly</i> DRAWN BY: B. COPPUS 1-89 OVER 104 FRANKLIN COUNTY VERMONT PREFORMED FABRIC BEARING					
					413 2201-1106-01