

PLAN SUBMITTED BY DATE
 PLANNED BY DATE
 NOTE BOOK NO. CHECKED BY DATE
 DRAWN BY DATE
 PREPARED BY DATE

*STANDARD STEEL BEAM GUARD
 RAIL W/STEEL POSTS-ITEM 545-A (12'6" dc)
 N.B. 3348+75-3350+20 Rt.
 S.B. 3349+21-3350+75 Lt.

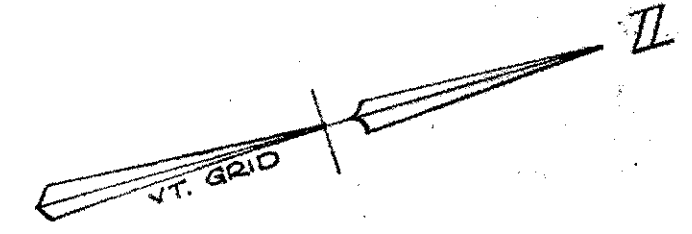
RIPRAP-ITEM 513-B
 S.B. 3349+71 Rt.-3349+79 Lt.

*THREE CABLE GUARD RAIL w/
 STEEL POSTS ITEM 542
 NB 3348+00 Lt.-3357+40 Lt.
 SB 3363+00 Lt.-3364+00 Lt.
 S.B. 3348+00 Lt.-3356+04 Lt.

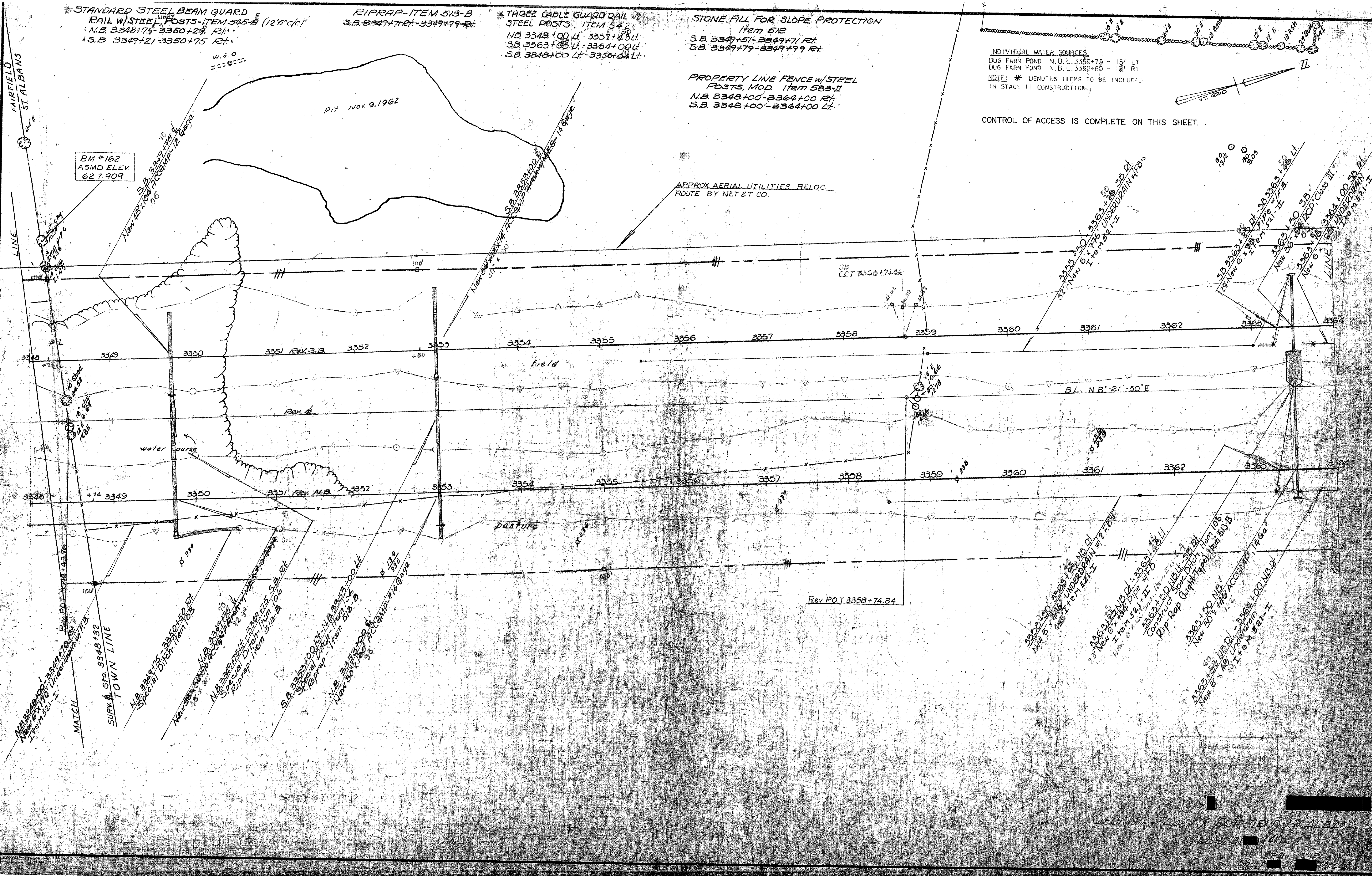
STONE FILL FOR SLOPE PROTECTION
 Item 512
 S.B. 3349+51-3349+71 Rt.
 S.B. 3349+79-3349+99 Rt.

PROPERTY LINE FENCE w/STEEL
 POSTS, MOD. ITEM 583-II
 N.B. 3348+00-3364+00 Rt.
 S.B. 3348+00-3364+00 Lt.

INDIVIDUAL WATER SOURCES
 DUG FARM POND N.B.L. 3359+75 - 15' LT
 DUG FARM POND N.B.L. 3362+60 - 12' RT
 NOTE: * DENOTES ITEMS TO BE INCLUDED
 IN STAGE II CONSTRUCTION.



CONTROL OF ACCESS IS COMPLETE ON THIS SHEET.



GRAPHIC SCALE

GEORGIA-FAIRFAX-FAIRFIELD-ST ALBANS
 189 3 (41)
 39 213
 Street 31 11 streets

STA. 3348 = MM112.29