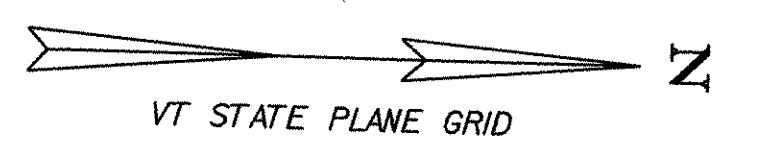
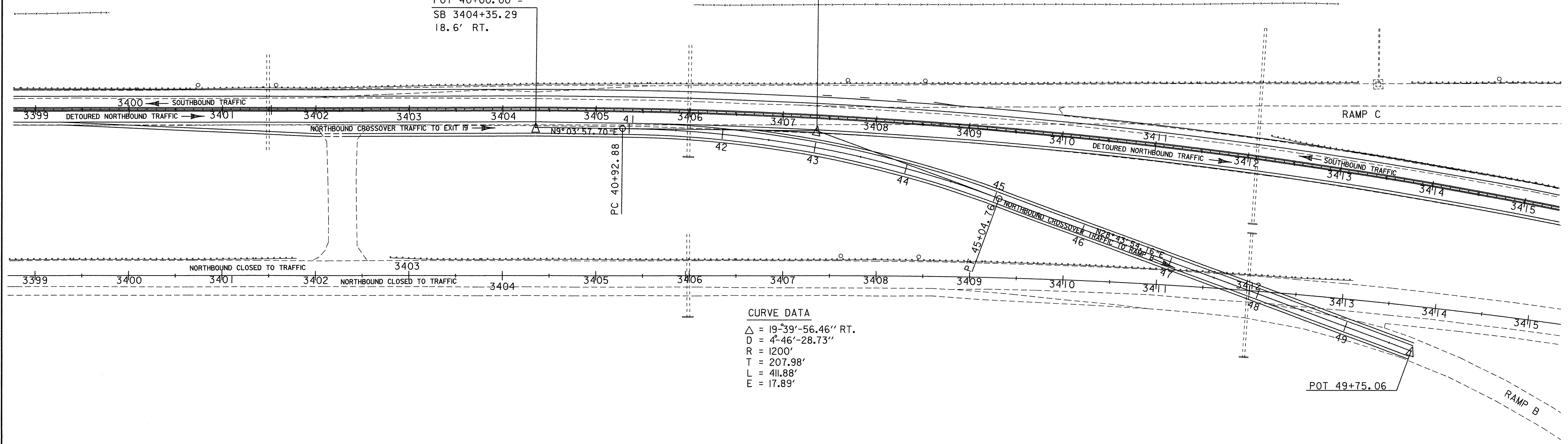


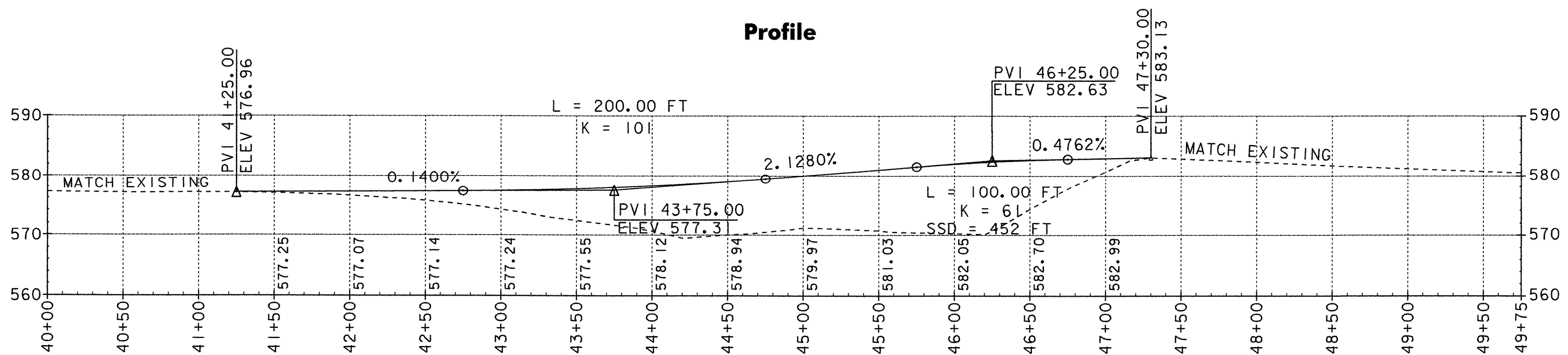
TEMPORARY 6' YELLOW LINE
 RAMP B CROSSOVER 42+00 - 47+50 (LT. EDGE SOLID)
 TEMPORARY 6' WHITE LINE
 SB 3400+00 - 3404+35 RT (DOTTED, FOR DECEL. LANE ENTRANCE)
 SB 3400+00 - 3404+35 (RT. EDGE SOLID)
 RAMP B CROSSOVER 40+00 - 47+00 (RT. EDGE SOLID)



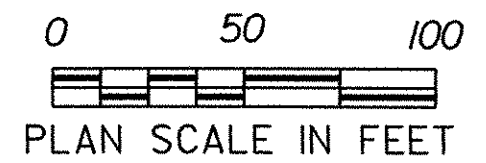
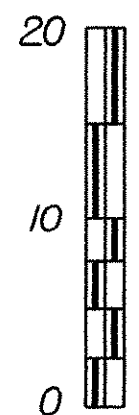
RAMP B CROSSOVER
 POT 40+00.00 =
 SB 3404+35.29
 18.6' RT.



Profile



PROFILE SCALES
 IN FEET



DATUM
 VERTICAL NAVD88
 HORIZONTAL NAD83(92)

NORTHBOUND CROSSOVER TO RAMP B

PROJECT: FAIRFAX-FAIRFIELD-ST. ALBANS	PROJECT NO. : IM 089-3(27)
DESIGN FILE NAME: 87A007B\DESIGN\DA007N19.DGN	PLOT DATE: 22-AUG-2000
IPARM FILE NAME: DA007BC	SURVEY DATE: JL95
SURVEYED BY: ORVIS	DRAWN BY: SQUAD B
SQUAD LEADER: DELLA SANTA	SHEET: 288 OF 370