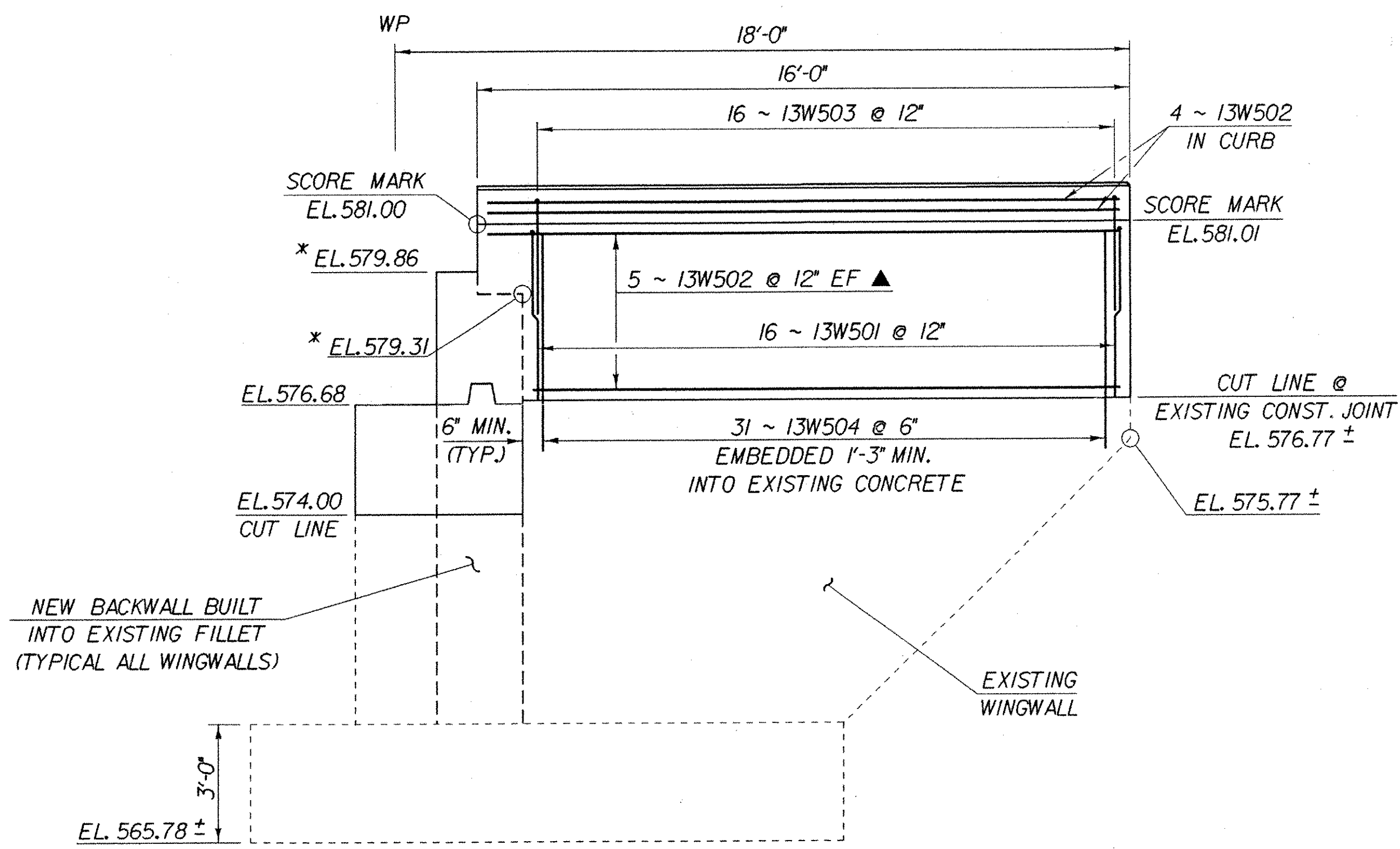


WINGWALL NO. 14 ELEVATION

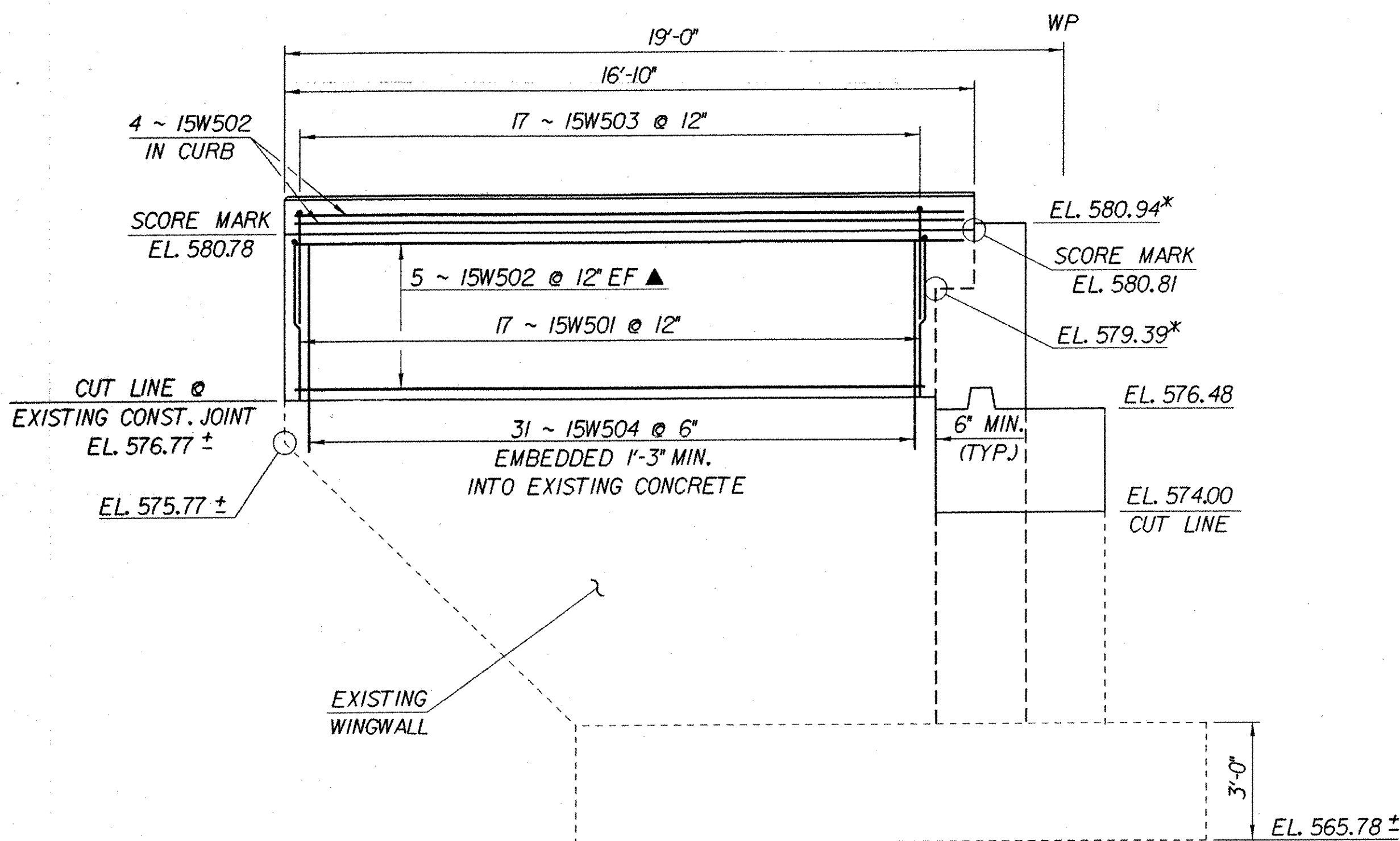
SCALE: 3/8" = 1'-0"



WINGWALL NO. 13 ELEVATION

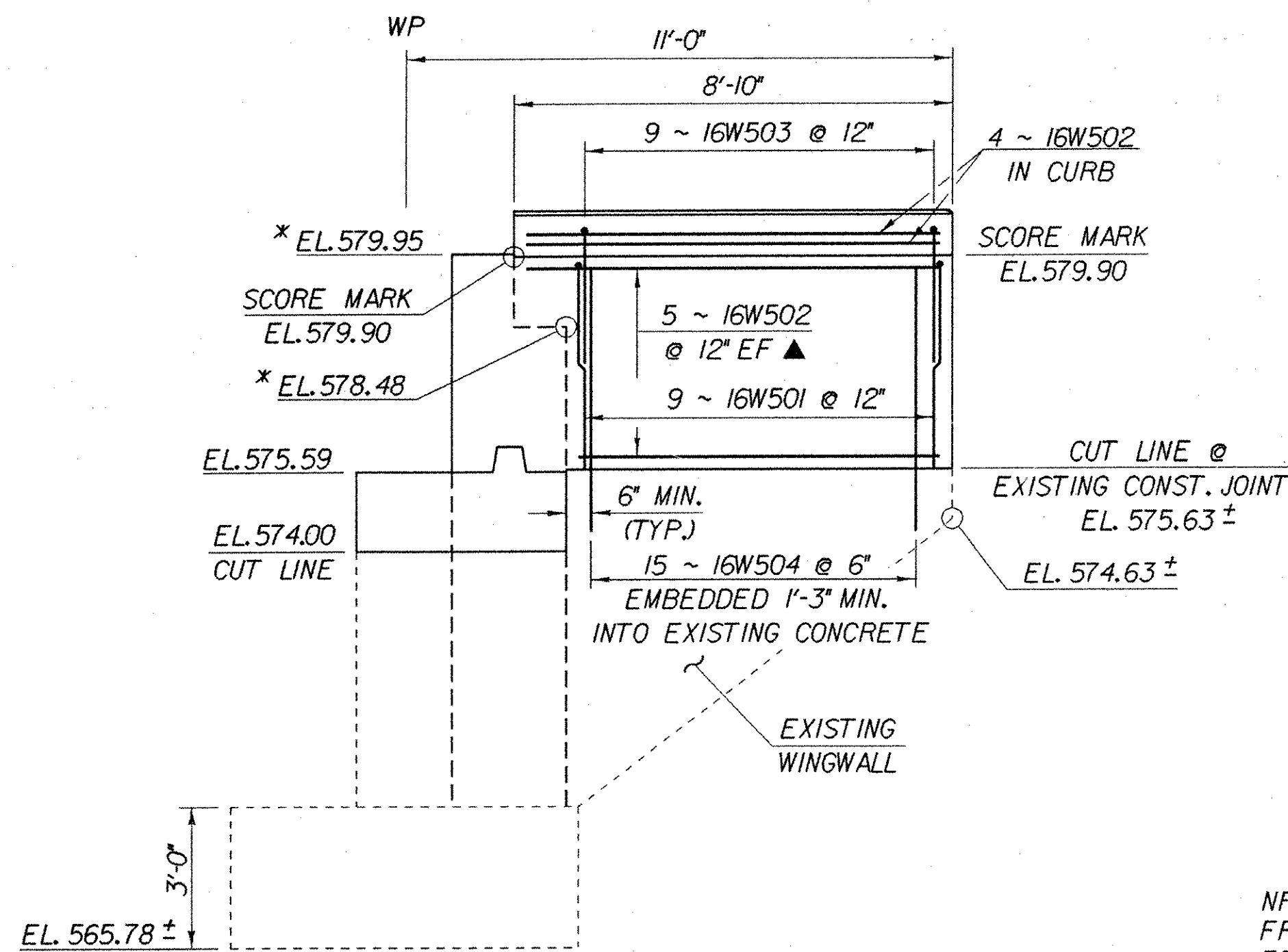
SCALE: 3/8" = 1'-0"

IMPORTANT NOTE: BRIDGE FINISHED GRADES ARE CENTERLINE GRADES.



WINGWALL NO. 15 ELEVATION

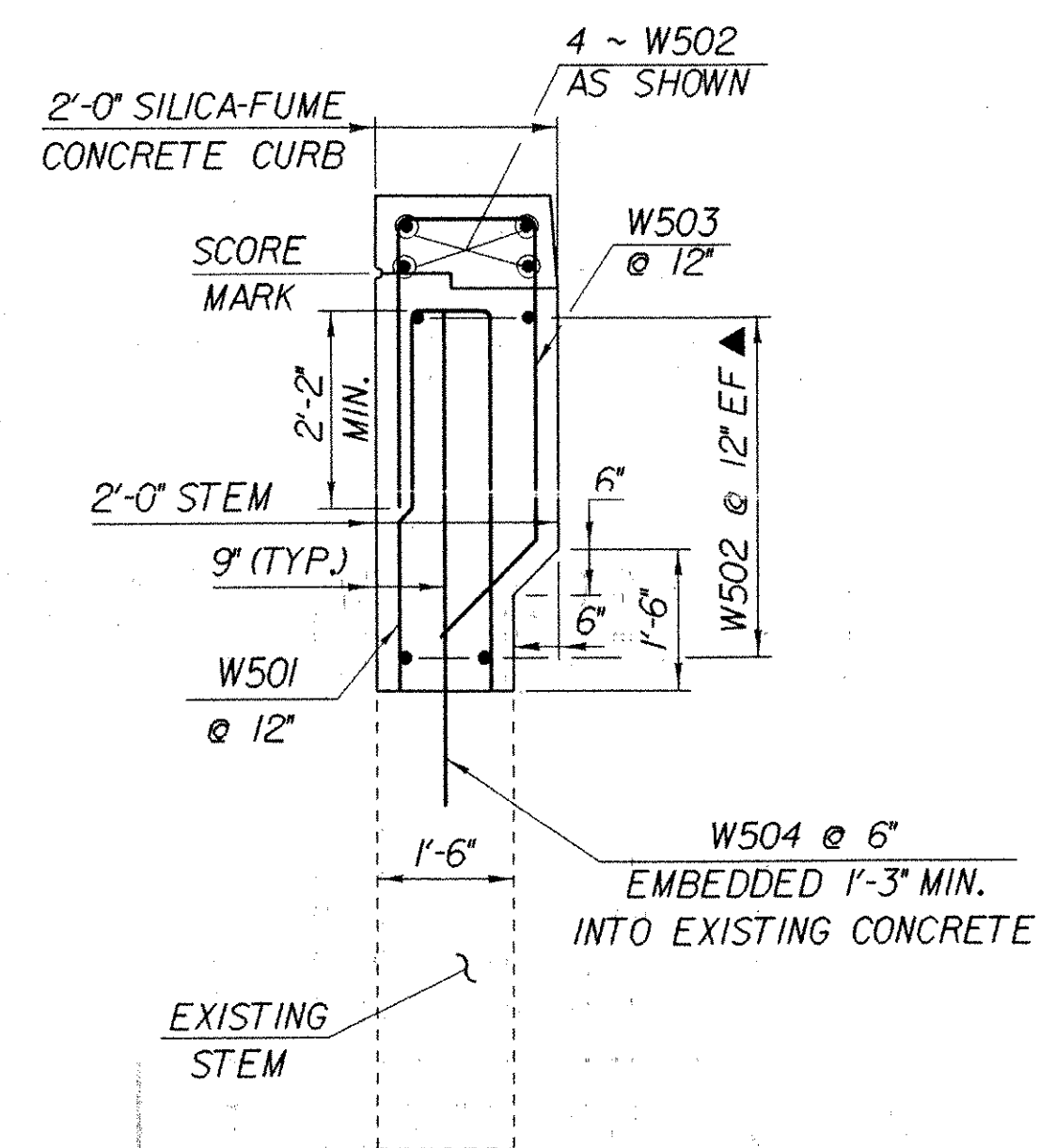
SCALE: 3/8" = 1'-0"



WINGWALL NO. 16 ELEVATION

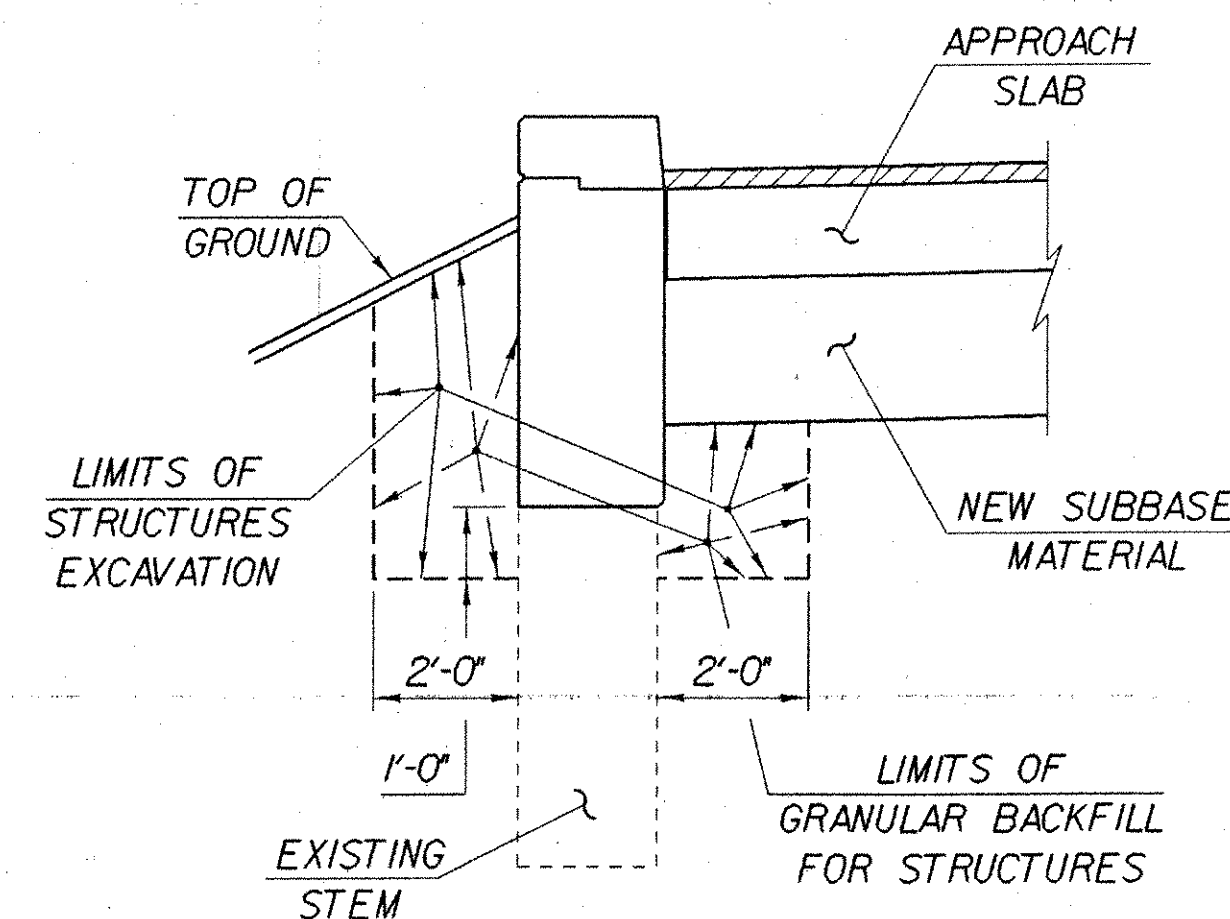
SCALE: 3/8" = 1'-0"

NOTE:
 NF = NEAR FACE
 FF = FAR FACE
 EF = EACH FACE
 ▲ = CUT TO FIT IN FIELD
 3" CLR. UNLESS OTHERWISE SPECIFIED ON THE PLANS.



WINGWALL TYPICAL

SCALE: 1/2" = 1'-0"



WINGWALL EARTHWORK TYPICAL

NOT TO SCALE

* NOTE:
 ELEVATIONS AT TOP OF BACKWALL AND APPROACH SLAB BRACKET TO BE VERIFIED BY THE RESIDENT ENGINEER AFTER STRUCTURAL STEEL IS ERECTED.

**STATE OF VERMONT
 AGENCY OF TRANSPORTATION**

Town of FAIRFAX-FAIRFIELD-ST. ALBANS	Bridge No. 88N
Highway No. 1-89	Log Sta. Surv. Sta.
1-89 OVER ST. ALBANS SOUTH STATE HIGHWAY (EXIT 19)	
WINGWALL NOS. 13 - 16 ELEVATIONS	
Designed By P. PERRY	Drawn By K. CHISHOLM
Checked By M. LOZIER	Bridge Design Supervisor R. R. WHITCOMB
Date 2/00	Date 2/00
PROJECT FAIRFAX-FAIRFIELD-ST. ALBANS	PROJECT NO. 1M 089 - 3 (27)
I.G.C. Info. 96a056Structures\sa056ab3.dgn	sa056mw4J
Bridge Sheet No. BR449	Sheet 201 of 370