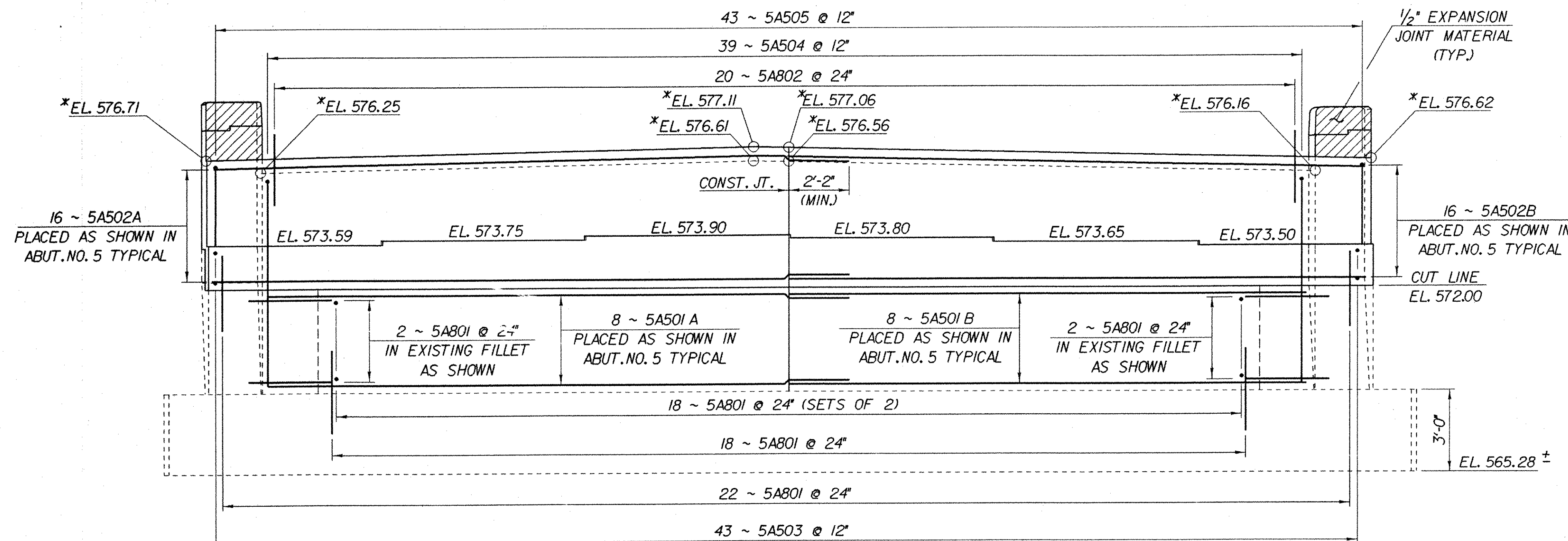


**ABUTMENT NO. 5 PLAN**  
SCALE: 3/8" = 1'-0"

\*\* NOTE:  
REMOVE EXISTING FILLETS DOWN TO CUT LINE ELEVATION. BUILD NEW FULL HEIGHT BACKWALL INTO EXISTING FILLETS BELOW CUT LINE DOWN TO TOP OF FOOTING ELEVATION. SEE CORNER DETAIL BELOW CUT LINE THIS SHEET.

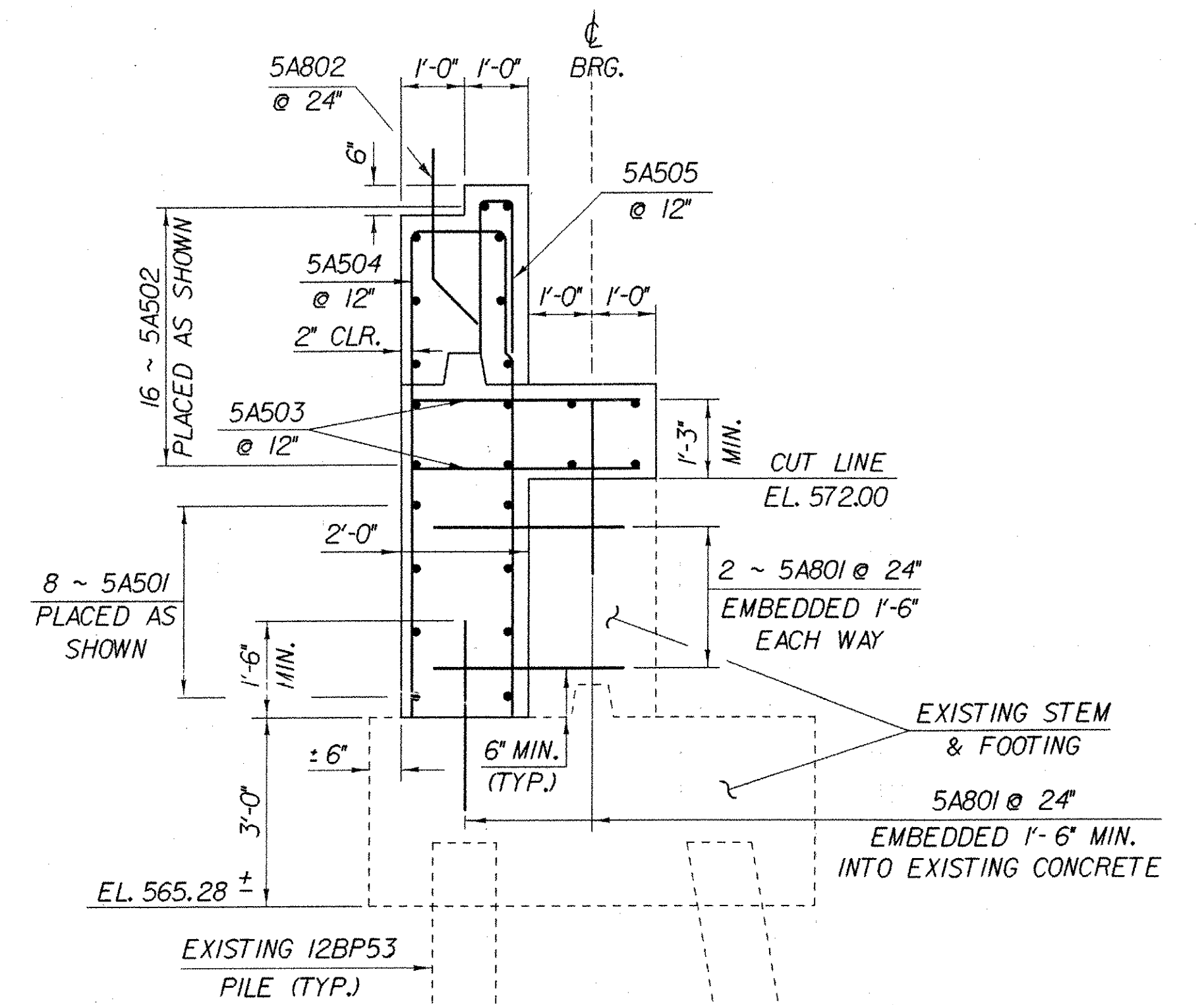


**ABUTMENT NO. 5 ELEVATION**  
SCALE: 3/8" = 1'-0"

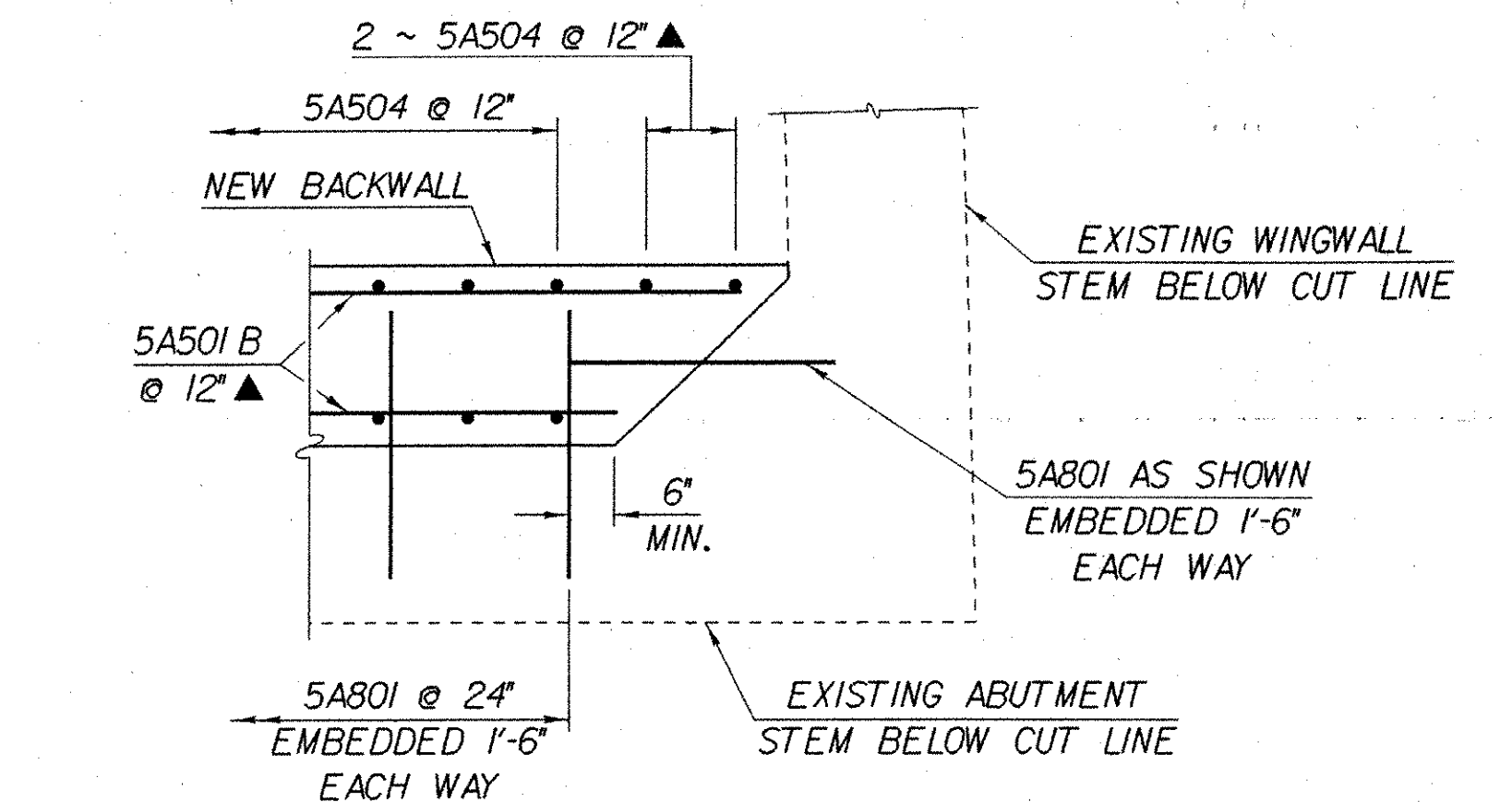
**IMPORTANT NOTE: BRIDGE FINISHED GRADES ARE CENTERLINE GRADES.**

\* NOTE:  
ELEVATIONS AT TOP OF BACKWALL AND APPROACH SLAB BRACKET TO BE VERIFIED BY THE RESIDENT ENGINEER AFTER STRUCTURAL STEEL IS ERECTED.

**NOTE:**  
NF = NEAR FACE  
FF = FAR FACE  
EF = EACH FACE  
▲ = CUT TO FIT IN FIELD  
3" CLR. UNLESS OTHERWISE SPECIFIED ON THE PLANS.



**ABUTMENT NO. 5 TYPICAL**  
SCALE: 1/2" = 1'-0"



**CORNER DETAIL BELOW CUT LINE**  
(ALL OTHER WINGWALL CORNERS SIMILAR)  
SCALE: 1/2" = 1'-0"

**STATE OF VERMONT  
AGENCY OF TRANSPORTATION**

Town Of <b>FAIRFAX-FAIRFIELD-ST. ALBANS</b>	Bridge No. 88S
Highway No. 1-89	Log Sta. Surv. Sta.
<b>1-89 OVER ST. ALBANS SOUTH STATE HIGHWAY (EXIT 19)</b>	
<b>ABUTMENT NO. 5 DETAILS</b>	
Designed By M. LOZIER	Drawn By K. CHISHOLM
Checked By M. LOZIER	Bridge Design Supervisor R. R. WHITCOMB
Date 2/00	Date 2/00
PROJECT <b>FAIRFAX-FAIRFIELD-ST. ALBANS</b>	PROJECT NO. <b>1M 089 - 3 (27)</b>
I.G.C. Info. 96a056\Structures\sm056ab2.dgn	sa056ab5j
Bridge Sheet No. BR439	Sheet 191 of 370