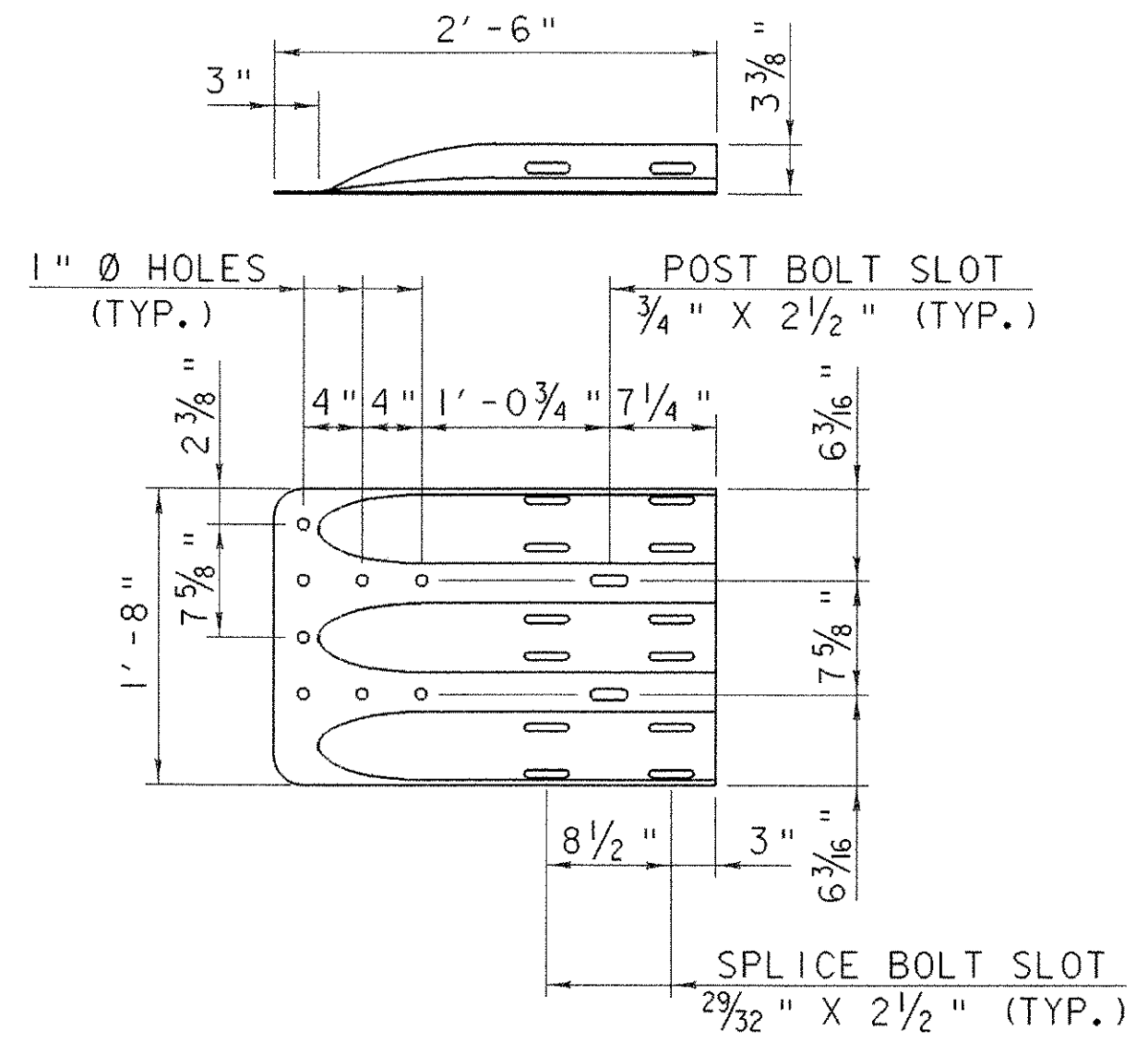
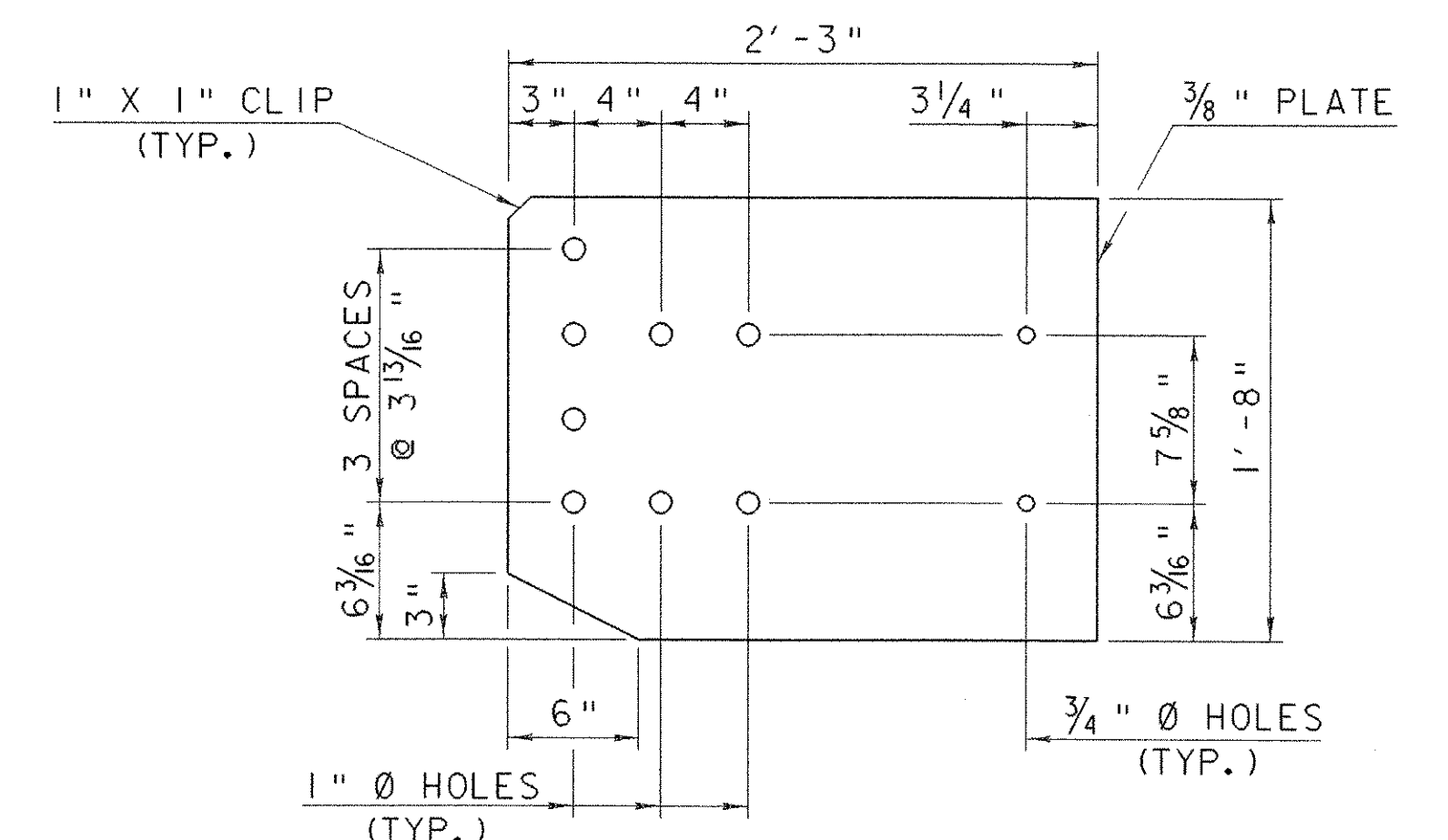


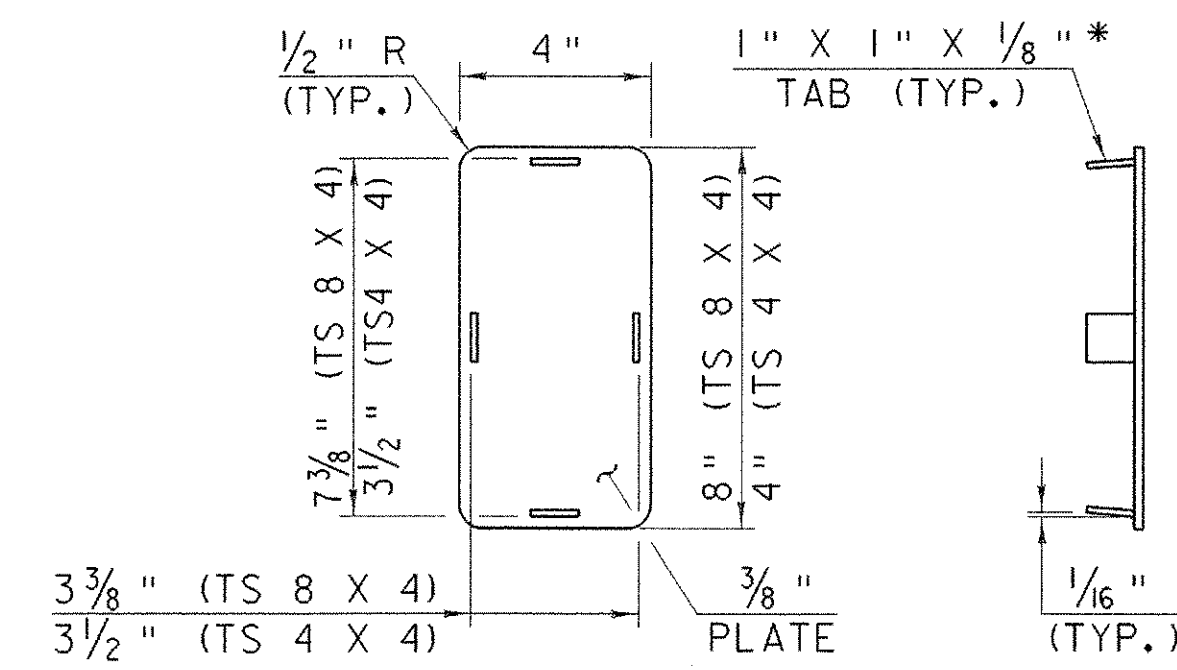
SECTION B-B
SCALE: 1" = 1'-0"



THRIE-BEAM TERMINAL CONNECTOR
SCALE: 1" = 1'-0"

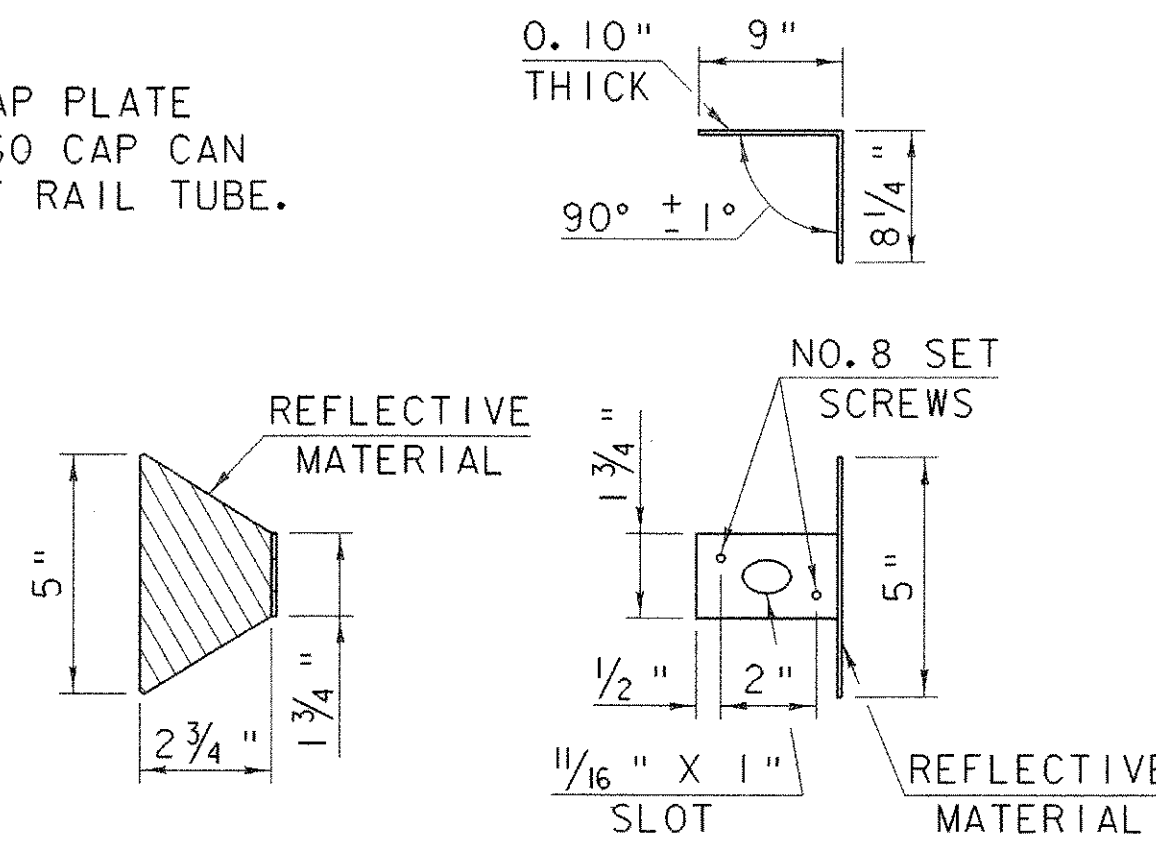


CONNECTION PLATE
SCALE: 1 1/2" = 1'-0"

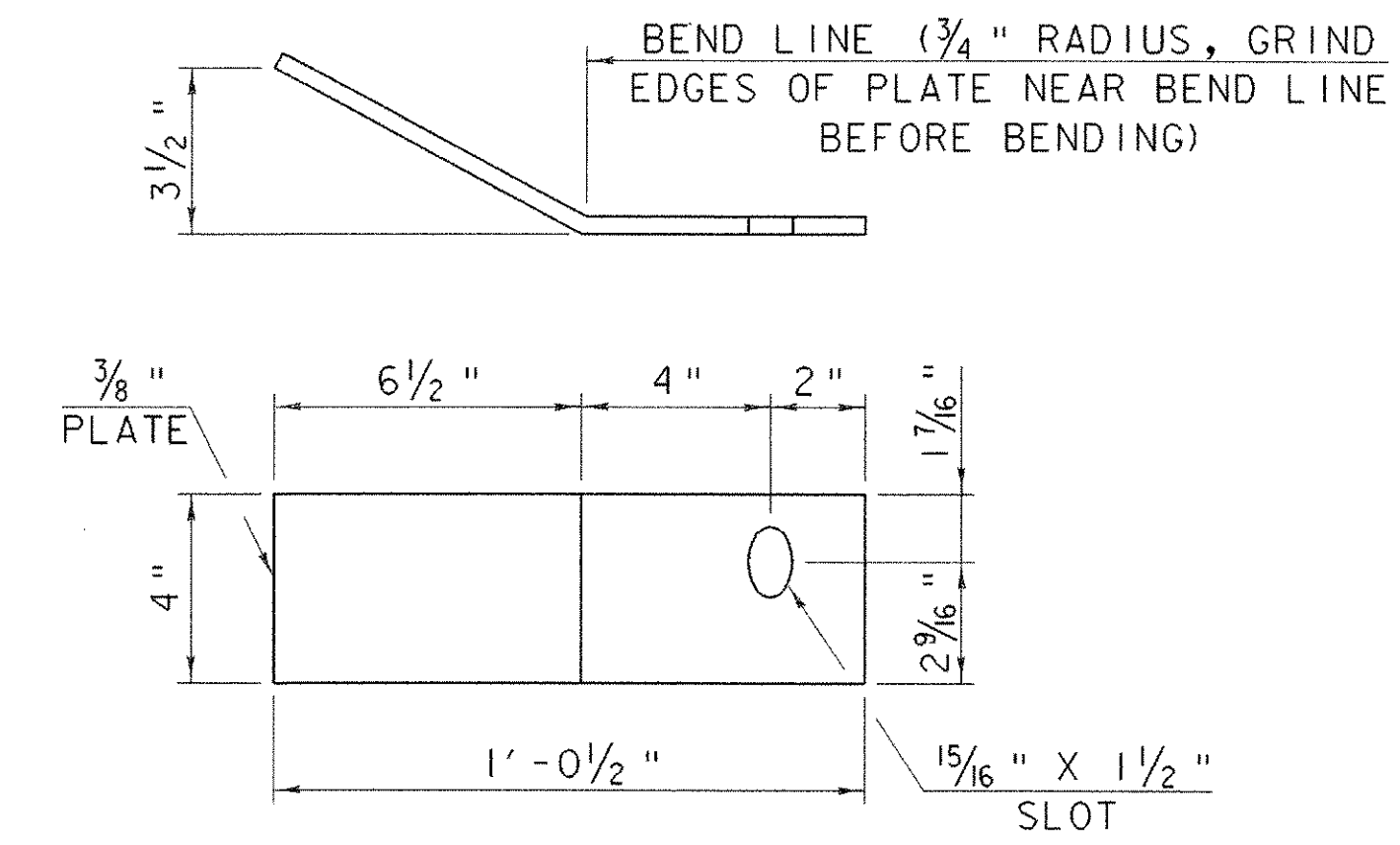


END CAP DETAIL
SCALE: 3" = 1'-0"

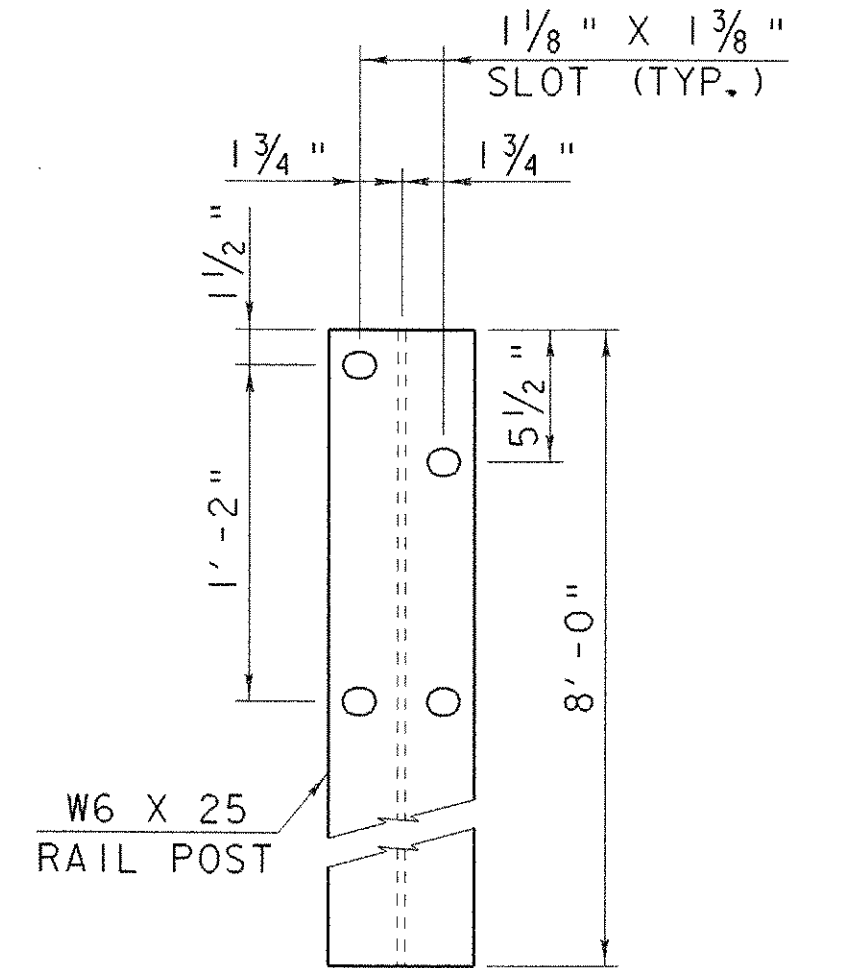
* WELD TABS TO END CAP PLATE IN TAPERED POSITION SO CAP CAN BE JAMMED INTO END OF RAIL TUBE.



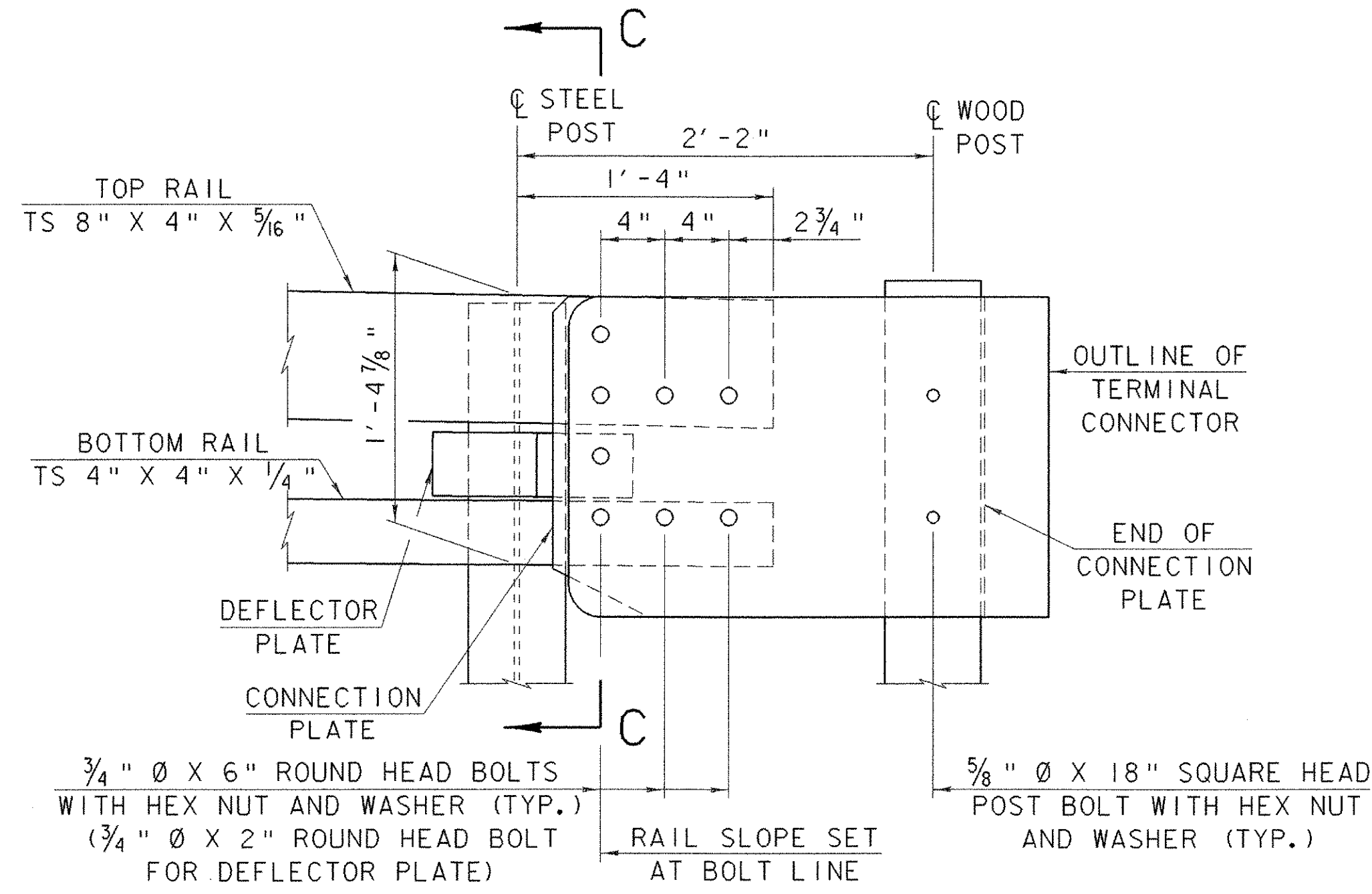
DELINEATION DEVICE DETAIL
SCALE: 3" = 1'-0"



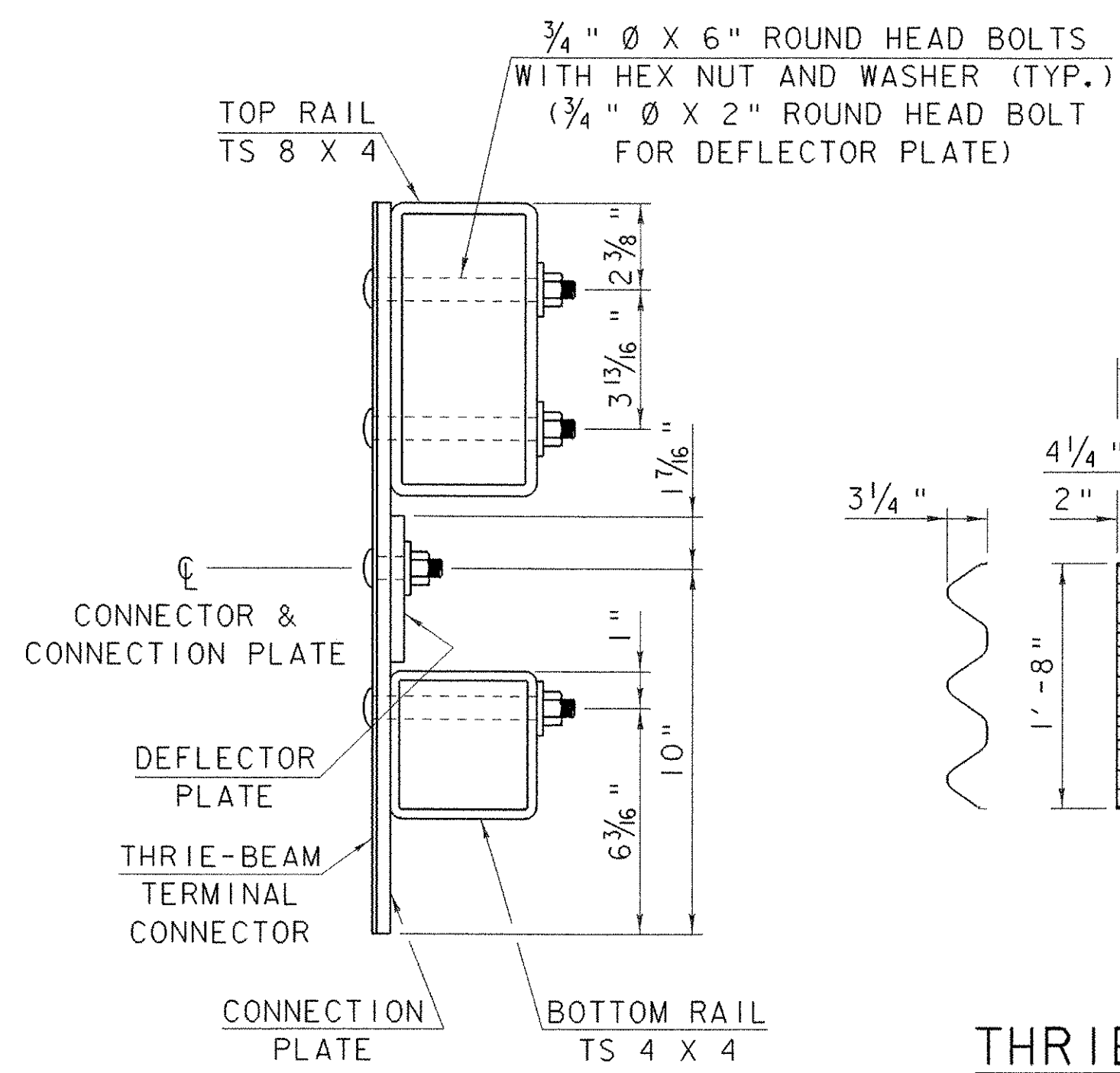
DEFLECTOR PLATE DETAIL
SCALE: 3" = 1'-0"



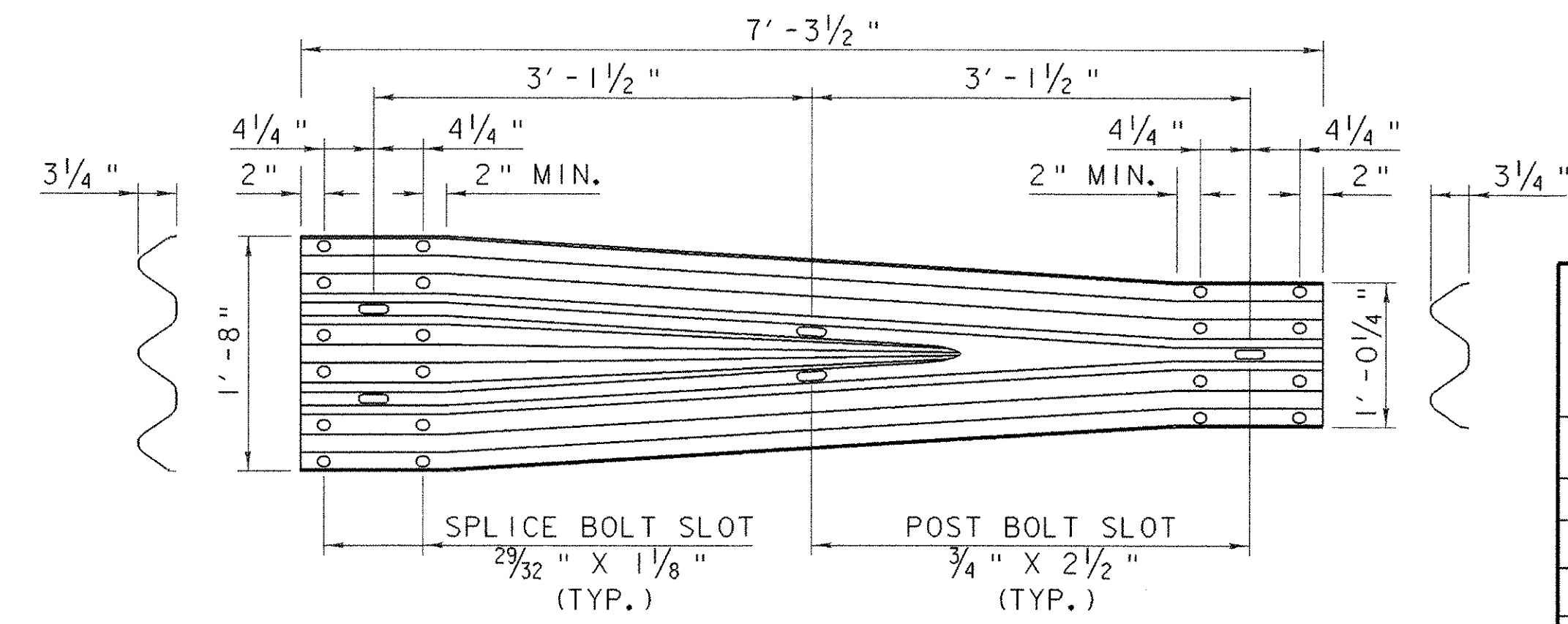
RAIL POST
SCALE: 1 1/2" = 1'-0"



DETAIL "C"
SCALE: 1 1/2" = 1'-0"



SECTION C-C
SCALE: 3" = 1'-0"



THRIE-BEAM TO W-BEAM TRANSITION SECTION
SCALE: 1" = 1'-0"

STATE OF VERMONT AGENCY OF TRANSPORTATION	
Town of FAIRFAX-FAIRFIELD-ST. ALBANS	Bridge No. 88 N & S
Highway No. I-89	Log Sta. Surv. Sta.
I-89 OVER ST. ALBANS SOUTH STATE HIGHWAY (EXIT 19)	
NETC RAIL DETAILS (3)	
Designed By G. ROY	Drawn By G. ROY
Checked By M. LOZIER	Bridge Design Supervisor R. R. WHITCOMB
PROJECT FAIRFAX-FAIRFIELD-ST. ALBANS	PROJECT NO. 1M 089 -3 (27)
I.G.C. Info. 96a056Structures\sa056br2.dgn	sa056ra71
Bridge Sheet No. BR434	Sheet 186 of 370