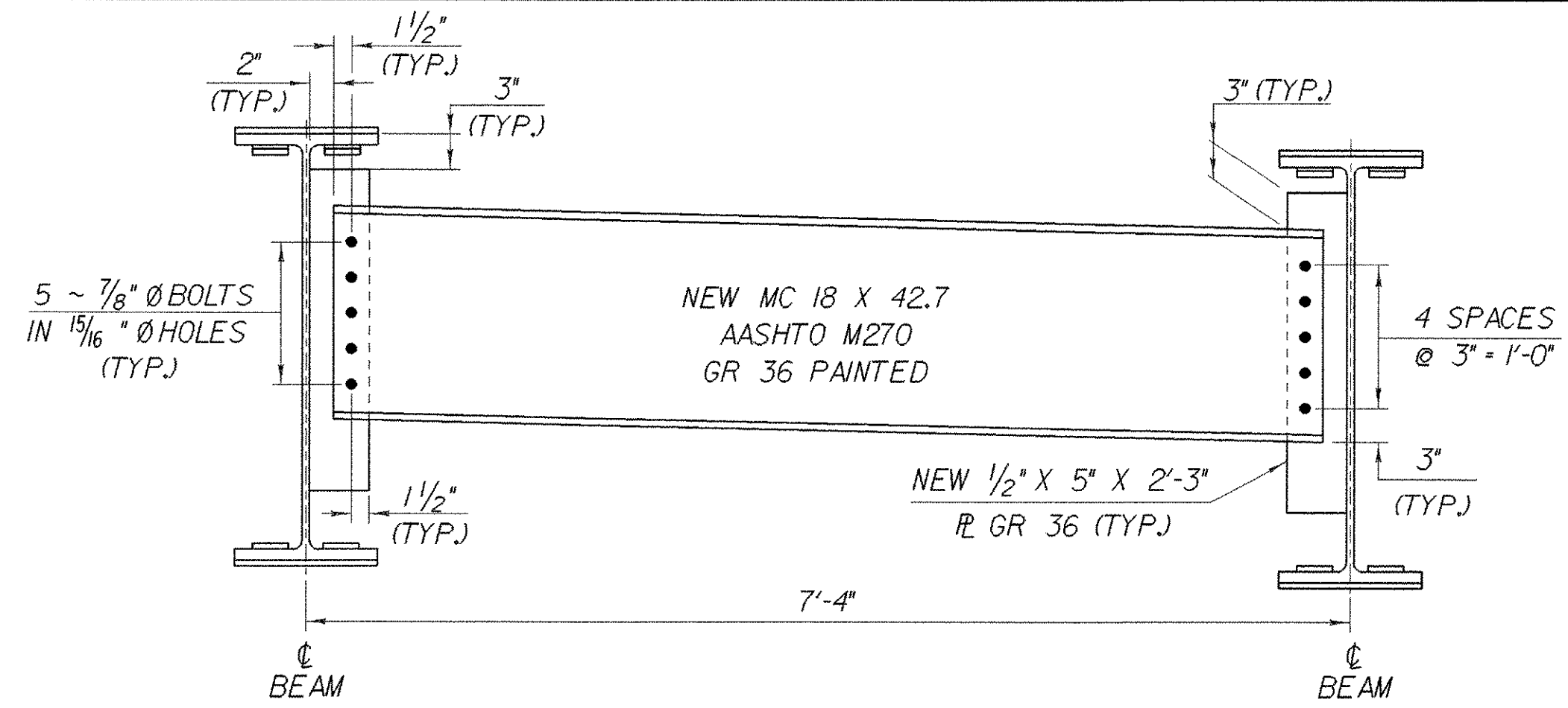


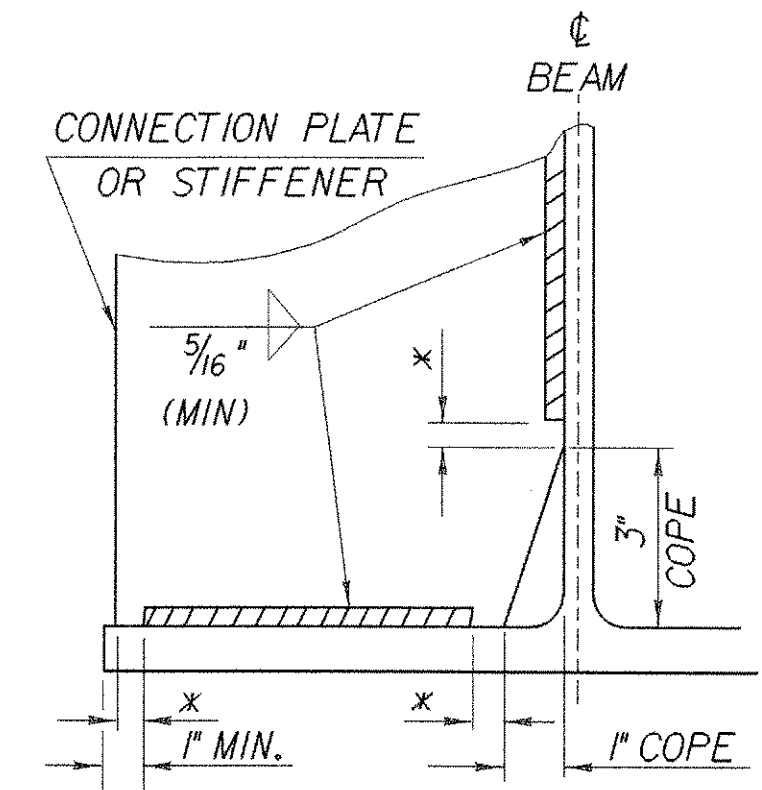
ABUTMENT DIAPHRAGM

SCALE: 1" = 1'-0"



PIER DIAPHRAGM

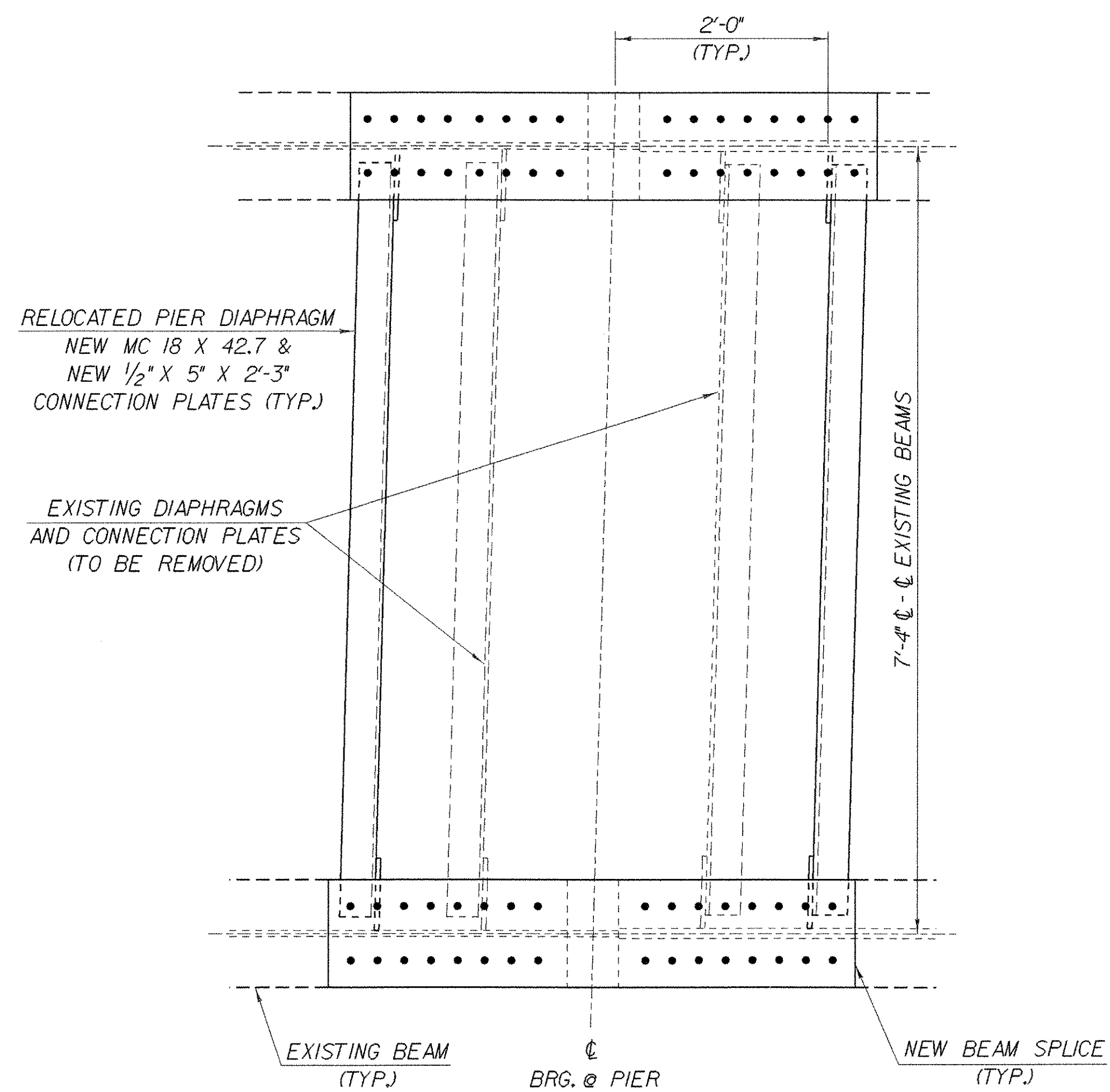
SCALE: 1" = 1'-0"



* NO WELD FOR 1/4" MIN. 1/2" MAX.
(EXCEPT MUST MAINTAIN 1" MINIMUM FROM EDGE OF FLANGE)

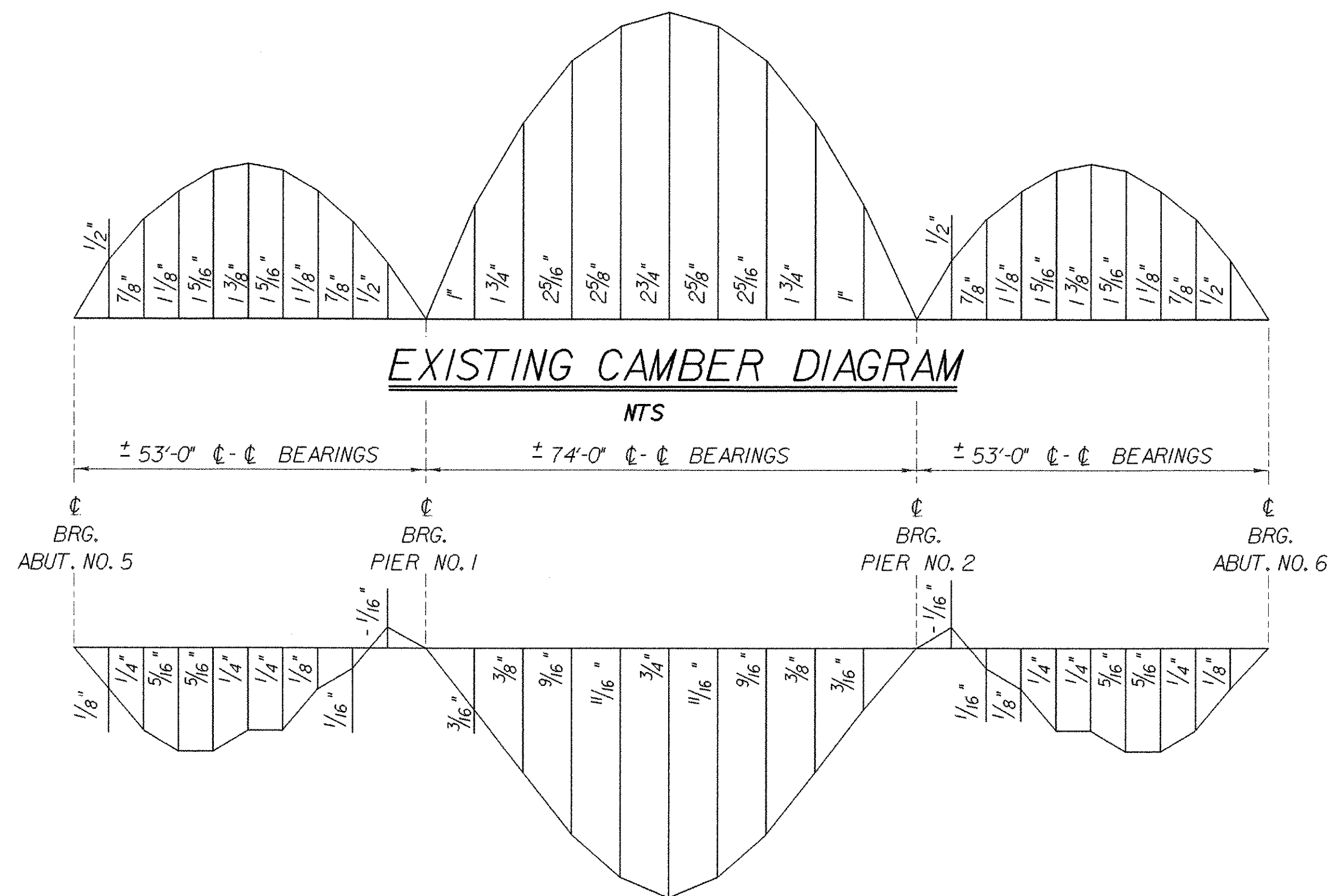
**WELD TERMINATION AND COPING
DETAILS FOR STEEL MEMBERS**

NTS



PIER DIAPHRAGM PLAN

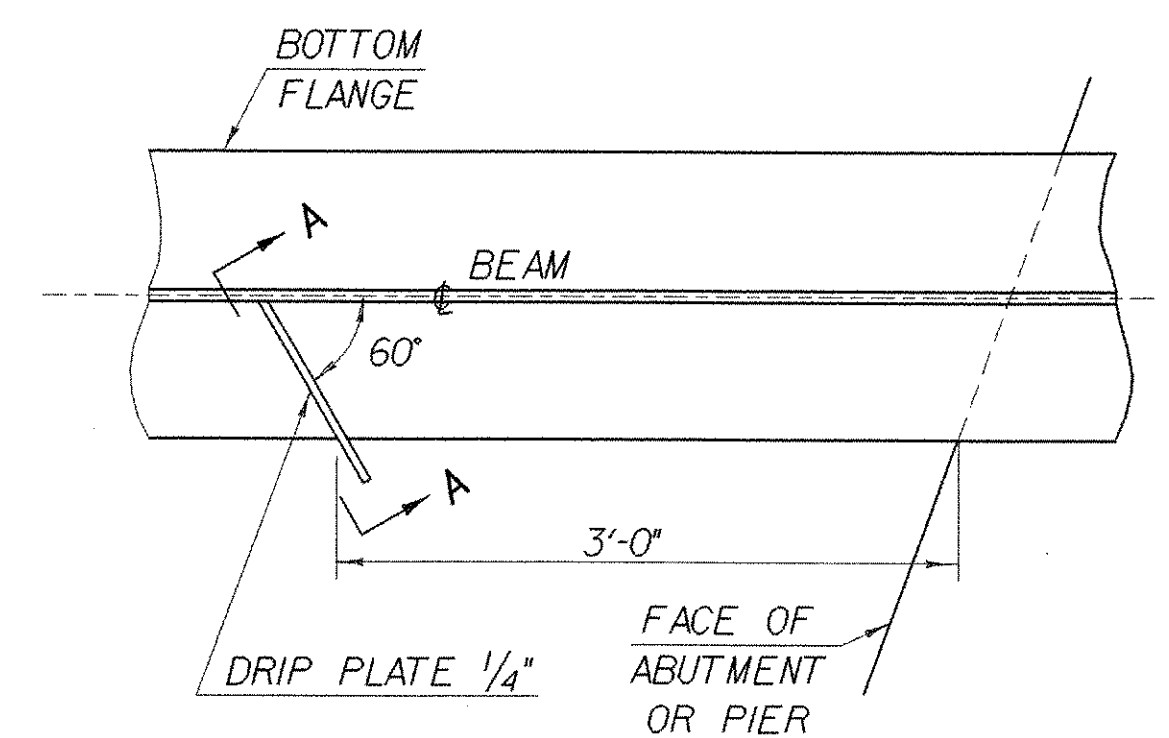
SCALE: 1" = 1'-0"



DEAD LOAD DEFLECTION DIAGRAM

NTS

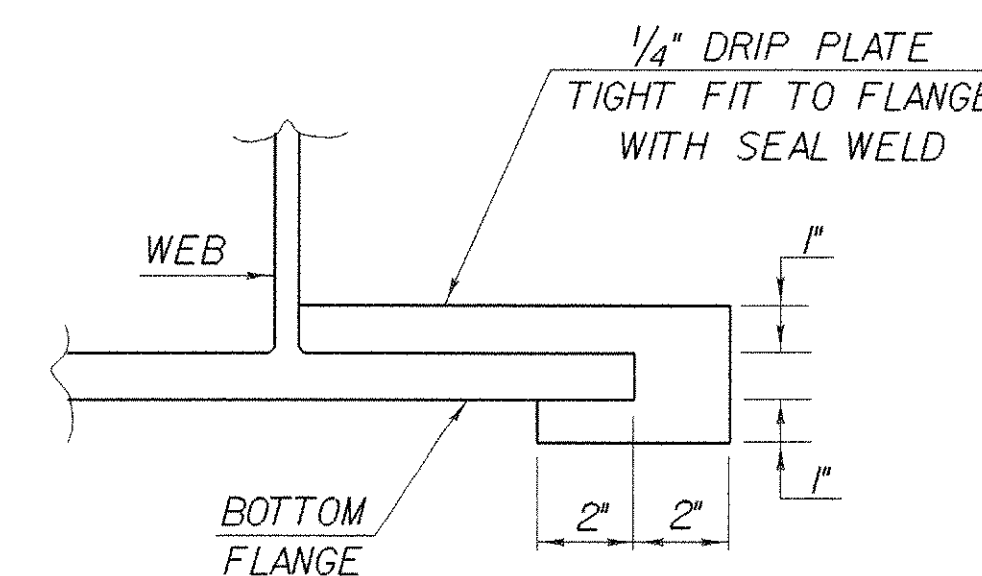
NOTE:
EXISTING CAMBER AND DEFLECTION MEASUREMENTS
ARE GIVEN IN INCHES @ TENTH POINTS.



PLAN DRIP PLATE

NTS

NOTE: DRIP PLATES SHALL BE PLACED ON OUTSIDE EDGE OF FASCIA BEAMS ON THE HIGH SIDE OF ALL PIERS AND ABUTMENTS OR AS INDICATED ON PROJECT PLANS.



SECTION A - A

NTS

**STATE OF VERMONT
AGENCY OF TRANSPORTATION**

Town Of FAIRFAX-FAIRFIELD-ST. ALBANS	Bridge No. 88S
Highway No. 1-89	Log Sta. Surv. Sta.
1-89 OVER ST. ALBANS SOUTH STATE HIGHWAY (EXIT 19)	
88S STRUCTURAL STEEL CONNECTION DETAILS	
Designed By M. LOZIER	Drawn By K. CHISHOLM
Checked By M. LOZIER	Bridge Design Supervisor
Date 2/00	R. R. WHITCOMB Date 2/00
PROJECT FAIRFAX-FAIRFIELD-ST. ALBANS	PROJECT NO. 1M 089 - 3 (27)
I.G.C. Info. 960056Structures\sa056fr2.dgn	sa056gd11
Bridge Sheet No. BR409	Sheet 161 of 370