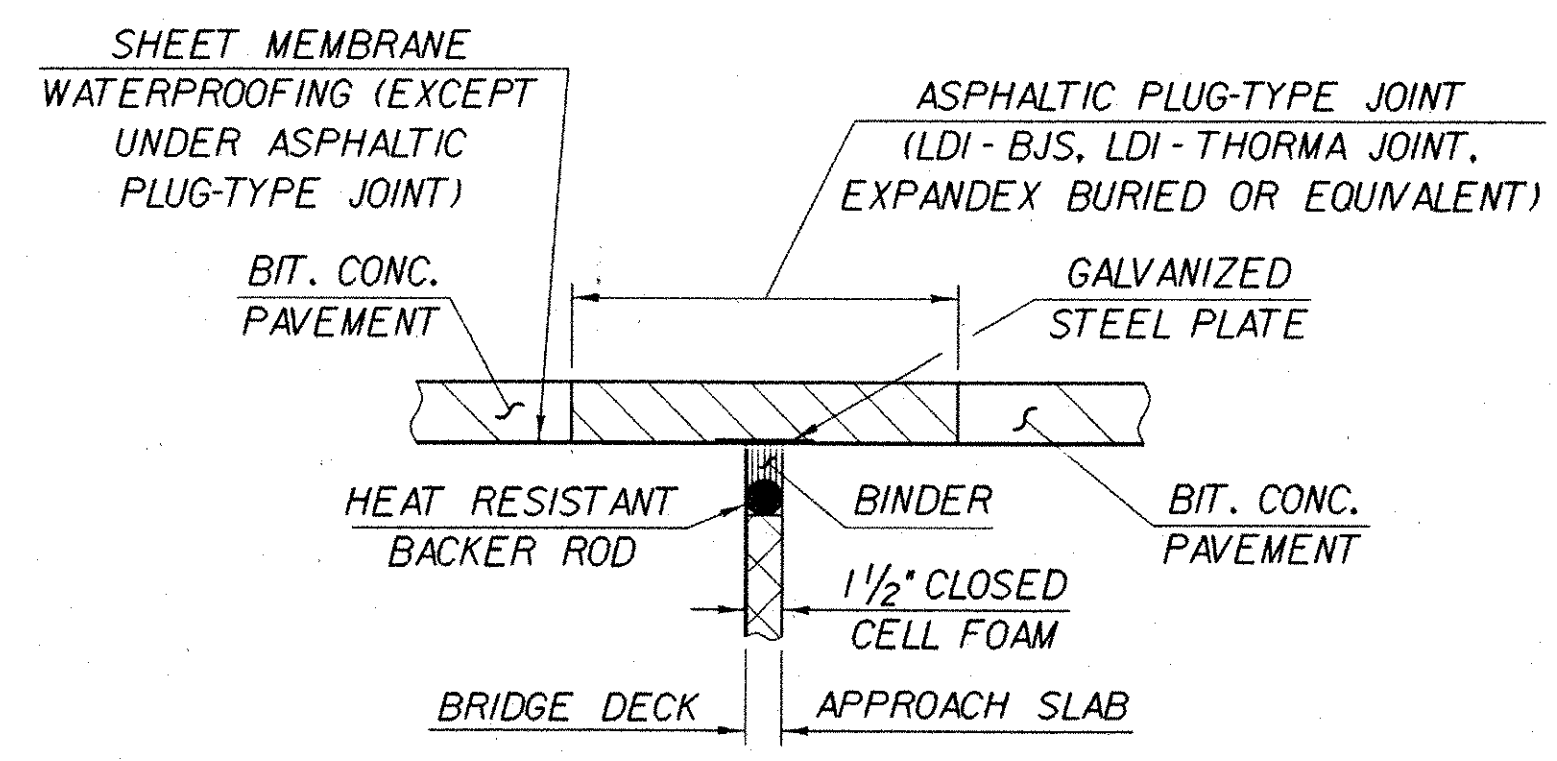


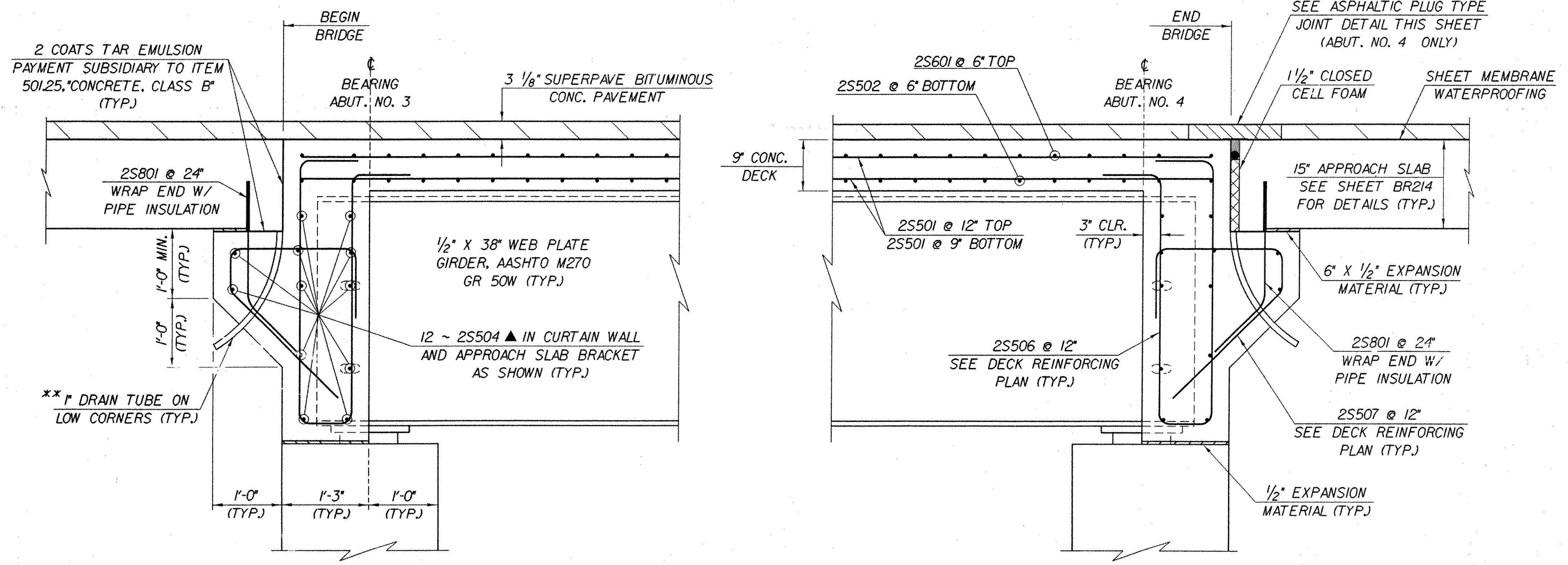
BRIDGE 87N TYPICAL SECTION
SCALE: 1/2" = 1'-0"

* 1ST LIFT: 1 3/8" TYPE IVS
2ND LIFT: 1 3/4" TYPE IIIS



ASPHALTIC PLUG-TYPE JOINT DETAIL
NTS

ALL MATERIALS, LABOR, AND INCIDENTALS NECESSARY FOR THE INSTALLATION OF THE PAVEMENT JOINT DETAILED ABOVE SHALL BE PAID FOR UNDER ITEM 516.10, "BRIDGE EXPANSION JOINT".



BRIDGE 87N ABUTMENT END DETAIL
(NORMAL TO BEARING)
SCALE: 1" = 1'-0"

** MATERIAL FOR TUBE SHALL MEET THE REQUIREMENTS OF SUBSECTION 740.01 OF THE VDOT STANDARD SPECIFICATIONS FOR CONSTRUCTION. PAYMENT SHALL BE MADE SUBSIDIARY TO ITEM 501.25, "CONCRETE, CLASS A".

IMPORTANT NOTE: BRIDGE FINISHED GRADES ARE CENTERLINE GRADES.

STATE OF VERMONT AGENCY OF TRANSPORTATION	
Town of FAIRFAX-FAIRFIELD-ST. ALBANS	Bridge No. 87 N
Highway No. 1-89	Log Sta. Surv. Sta.
1-89 NB OVER VT 104	
87N BRIDGE DECK DETAILS	
Designed By M. LOZIER	Drawn By K. CHISHOLM
Checked By G. ROY Date 10/99	Bridge Design Supervisor R. R. WHITCOMB Date 11/99
PROJECT FAIRFAX-FAIRFIELD-ST. ALBANS	PROJECT NO. 1 M 089 - 3 (27)
I.G.C. Info. 941106Structures\1106spl.dgn	sou56apl
Bridge Sheet No. BR207	Sheet 85 of 370