

SOUTHBOUND: 8" UNDERDRAIN (MODIFICATION #2)
 66 3401+52 RT - 3403+00 RT W/FB @ 3403+00 RT

RAMP C: 8" UNDERDRAIN (MODIFICATION #1)
 94 24+24 LT-28+52 LT W/FB @ 27+75 LT

SOUTHBOUND: 8" UNDERDRAIN CARRIER PIPE
 66A 3401+52 RT W/FB @ 3401+52 RT

REMOVAL OF EXISTING FENCE (MOD.)
 (SOUTHBOUND)
 STA. 3397+00 SB LT - 3413+00 SB LT
 (CONTINUES ALONG RAMP C, NEXT SHEET)

CHAIN LINK FENCE, 6 FEET
 (SOUTHBOUND)
 STA. 3397+00 SB LT - 3413+00 SB LT
 (CONTINUES ALONG RAMP C, NEXT SHEET)

VT STATE PLANE GRID
 SB PI 3412+74.80 =
 3412+62.93

STONE FILL, TYPE II
 (FOR SLOPE PROTECTION)
 RAMP C 24+50 RT-26+25 RT

TREATED TIMBER CURB
 RAMP C 24+50 RT - 28+00 RT

STEEL BEAM GUARD RAIL
 (SOUTHBOUND)
 3397+00 LT - 3404+35 LT
 (CONTINUES ALONG RAMP C)
 RAMP C 25+00 RT - 33+25 RT
 3397+00 RT - 3398+00 RT

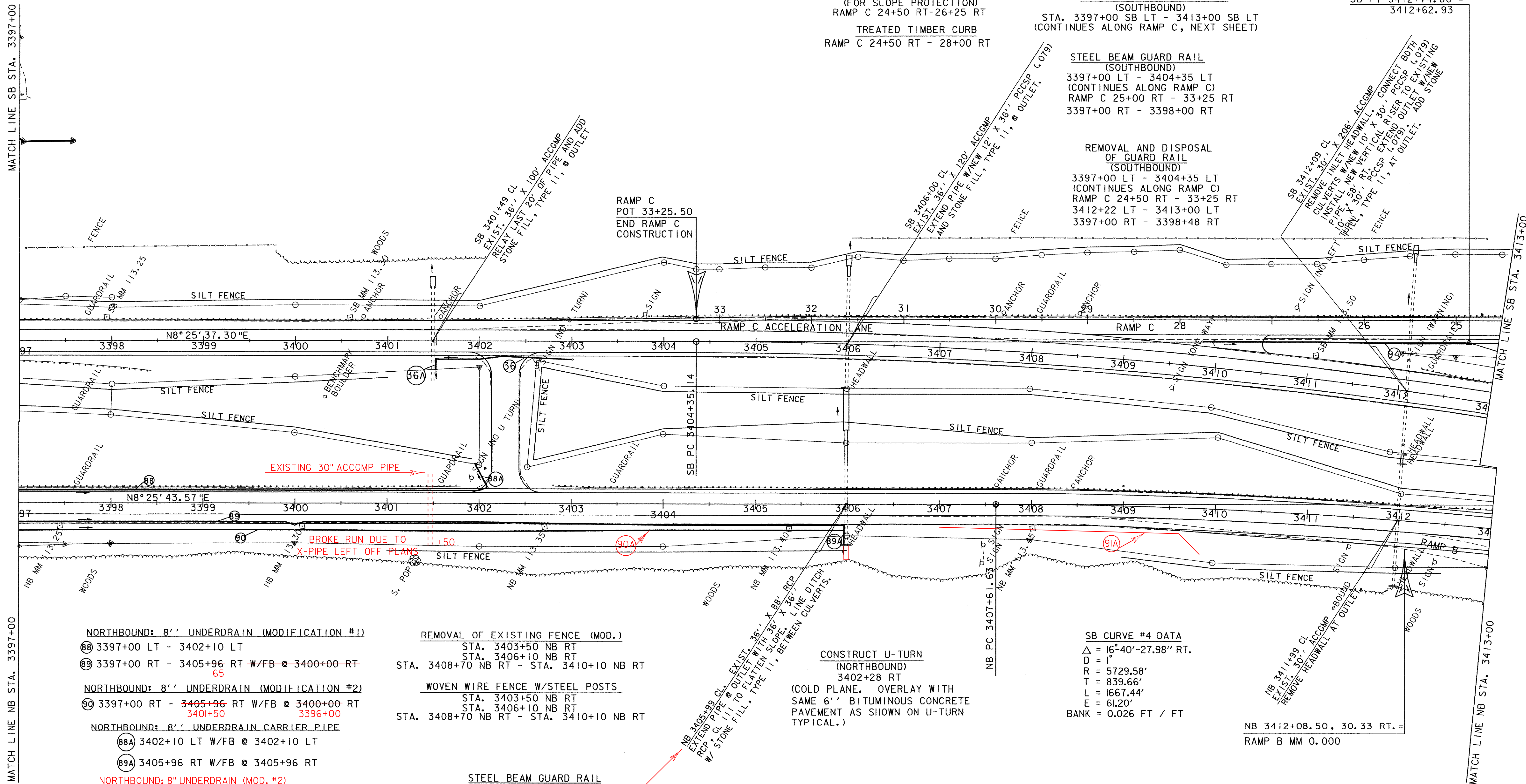
REMOVAL AND DISPOSAL
 OF GUARD RAIL
 (SOUTHBOUND)
 3397+00 LT - 3404+35 LT
 (CONTINUES ALONG RAMP C)
 RAMP C 24+50 RT - 33+25 RT
 3412+22 LT - 3413+00 LT
 3397+00 RT - 3398+48 RT

MATCH LINE SB STA. 3397+00

MATCH LINE SB STA. 3413+00

MATCH LINE NB STA. 3397+00

MATCH LINE NB STA. 3413+00



NORTHBOUND: 8" UNDERDRAIN (MODIFICATION #1)
 88 3397+00 LT - 3402+10 LT
 89 3397+00 RT - 3405+96 RT W/FB @ 3400+00 RT
 65

NORTHBOUND: 8" UNDERDRAIN (MODIFICATION #2)
 90 3397+00 RT - 3405+96 RT W/FB @ 3400+00 RT
 3401+50 3396+00

NORTHBOUND: 8" UNDERDRAIN CARRIER PIPE
 88A 3402+10 LT W/FB @ 3402+10 LT
 89A 3405+96 RT W/FB @ 3405+96 RT

REMOVAL OF EXISTING FENCE (MOD.)
 STA. 3403+50 NB RT
 STA. 3406+10 NB RT
 STA. 3408+70 NB RT - STA. 3410+10 NB RT

WOVEN WIRE FENCE W/STEEL POSTS
 STA. 3403+50 NB RT
 STA. 3406+10 NB RT
 STA. 3408+70 NB RT - STA. 3410+10 NB RT

CONSTRUCT U-TURN
 (NORTHBOUND)
 3402+28 RT
 (COLD PLANE. OVERLAY WITH
 SAME 6" BITUMINOUS CONCRETE
 PAVEMENT AS SHOWN ON U-TURN
 TYPICAL.)

SB CURVE #4 DATA
 $\Delta = 16^{\circ}40' - 27.98''$ RT.
 $D = 1^{\circ}$
 $R = 5729.58'$
 $T = 839.66'$
 $L = 1667.44'$
 $E = 61.20'$
 BANK = 0.026 FT / FT

NB 3412+08.50, 30.33 RT. =
 RAMP B MM 0.000

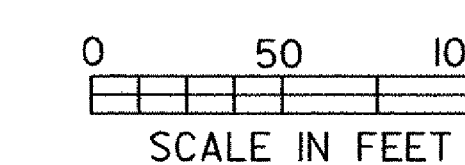
NORTHBOUND: 8" UNDERDRAIN (MOD. #2)
 90A 3401+55 RT - 3405+90 RT W/FB @ 3401+55
 91A 3407+00 RT - 3409+80 RT W/FB @ 3407+00

STEEL BEAM GUARD RAIL
 (NORTHBOUND)
 3404+00 RT - 3407+00 RT
 ADDED END SECTION ON INLET

REMOVAL AND DISPOSAL
 OF GUARD RAIL
 (NORTHBOUND)
 3397+00 LT - 3401+80 LT
 3402+80 LT - 3413+10 LT

SB & NB 3397+00 - 3413+00
 RAMP "C" 24+50 - 33+25.50

PROJECT:	FAIRFAX - FAIRFIELD - ST. ALBANS	PROJECT NO.:	IM 089-3(27)
DESIGN FILE NAME:	/87A007B/DESIGN/DA007NULDGN	PLOT DATE:	07-SEP-2000
IPARM FILE NAME:	DA007L09	SURVEY DATE:	6/98
SURVEYED BY:	ORVIS	DRAWN BY:	SQUAD B
SQUAD LEADER:	DELLA SANTA	SHEET:	65 OF 370



DATUM	
VERTICAL	NAVD88
HORIZONTAL	NAD83(92)