

SOUTHBOUND: 8' UNDERDRAIN (MODIFICATION #1)  
 ⑧ 3317+00 LT - 3318+00 LT W/FB @ 3318+00 LT  
 ⑩ 3318+02 LT - 3321+02 LT W/FB @ 3318+02 LT

SOUTHBOUND: 8' UNDERDRAIN CARRIER PIPE  
 25A 3321+02 LT W/FB @ 3321+02 LT

REMOVAL AND DISPOSAL  
 OF GUARD RAIL  
 (SOUTHBOUND)  
 3324+66 LT - 3333+00 LT

STEEL BEAM GUARD RAIL  
 (SOUTHBOUND)  
 3327+00 LT - 3333+00 LT



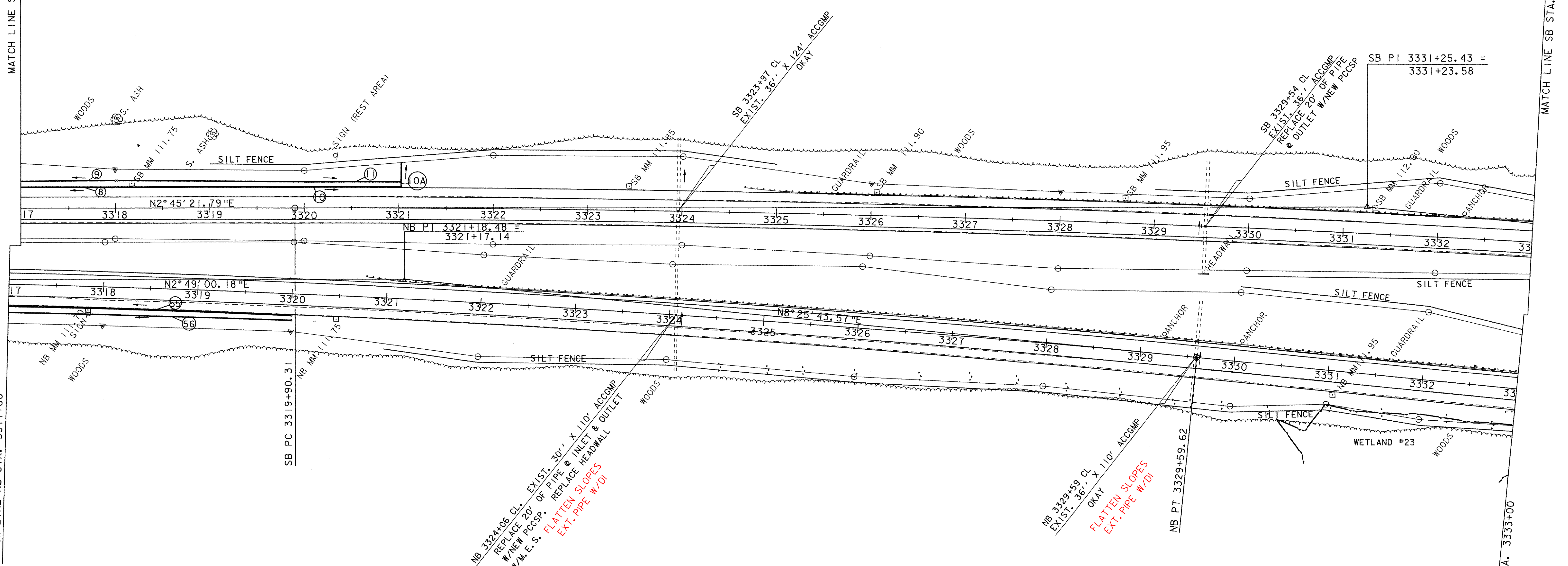
SOUTHBOUND: 8' UNDERDRAIN (MODIFICATION #2)  
 ⑨ 3317+00 LT - 3318+00 LT W/FB @ 3318+00 LT  
 ⑪ 3318+02 LT - 3321+02 LT W/FB @ 3318+02 LT

MATCH LINE SB STA. 3317+00

MATCH LINE SB STA. 3333+00

MATCH LINE NB STA. 3317+00

MATCH LINE NB STA. 3333+00



**DATUM**

VERTICAL	NAVD88
HORIZONTAL	NAD83(92)

**NB CURVE #2 DATA**  
 $\Delta = 5^{\circ}36'43.39''$  RT.  
 $D = 0^{\circ}20'$   
 $R = 17188.74'$   
 $T = 842.48'$   
 $L = 1683.62'$   
 $E = 20.63'$   
 BANK = 0.021 FT / FT

**NORTHBOUND: 8' UNDERDRAIN (MODIFICATION #1)**  
 ⑤ 3317+00 RT - 3320+00 RT W/FB @ 3320+00 RT 95

**NORTHBOUND: 8' UNDERDRAIN (MODIFICATION #2)**  
 ⑥ 3317+00 RT - 3320+00 RT W/FB @ 3320+00 RT 95

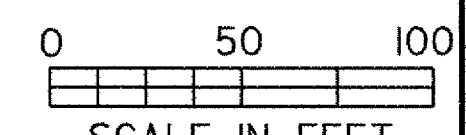
**REMOVAL OF EXISTING FENCE (MOD.)**  
 STA. 3319+00 NB RT  
 STA. 3324+20 NB RT  
 STA. 3325+47 NB RT  
 STA. 3328+00 NB RT  
 STA. 3328+50 NB RT  
 STA. 3332+70 NB RT

**WOVEN WIRE FENCE W/STEEL POSTS**  
 STA. 3319+00 NB RT  
 STA. 3324+20 NB RT  
 STA. 3325+47 NB RT  
 STA. 3328+00 NB RT  
 STA. 3328+50 NB RT  
 STA. 3332+70 NB RT

**REMOVAL AND DISPOSAL  
 OF GUARD RAIL  
 (NORTHBOUND)**  
 3320+78 LT - 3333+00 LT

**STEEL BEAM GUARD RAIL  
 (NORTHBOUND)**  
 3321+00 LT - 3333+00 LT

**SB CURVE #3 DATA**  
 $\Delta = 5^{\circ}40'15.51''$  RT.  
 $D = 0^{\circ}15'$   
 $R = 22918.32'$   
 $T = 1135.12'$   
 $L = 2268.39'$   
 $E = 28.09'$   
 BANK = 0.021 FT / FT



PROJECT: FAIRFAX - FAIRFIELD - ST. ALBANS		PROJECT NO.: IM 089-3(27)
DESIGN FILE NAME: /87A007B/DESIGN/DA007NUI.DGN	PLOT DATE: 18-AUG-2000	
IPARM FILE NAME: DA007L04	SURVEY DATE: 6/98	
SQUAD LEADER: ORVIS	DRAWN BY: SQUAD B	
SHEET: 55 OF		370