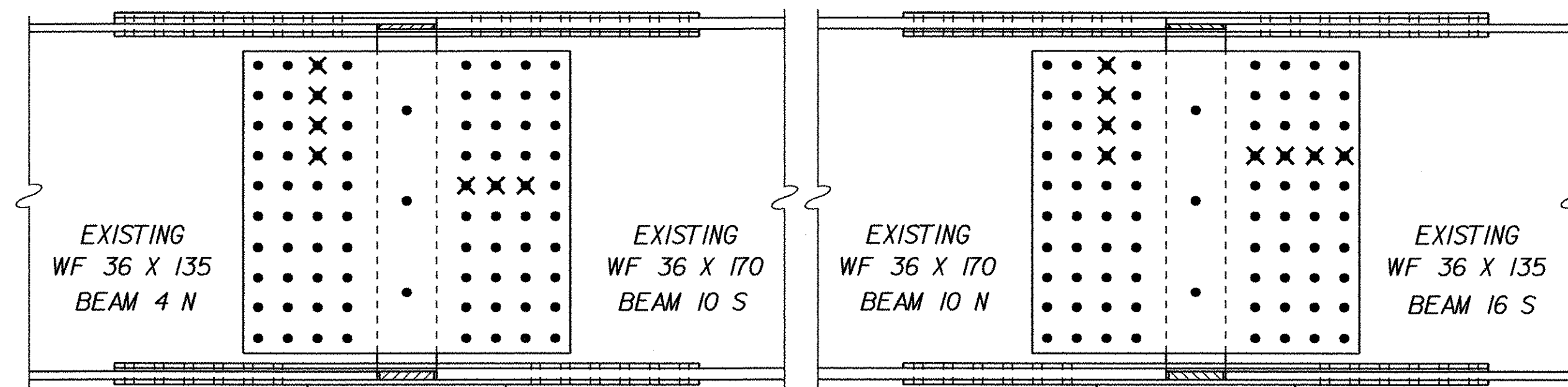


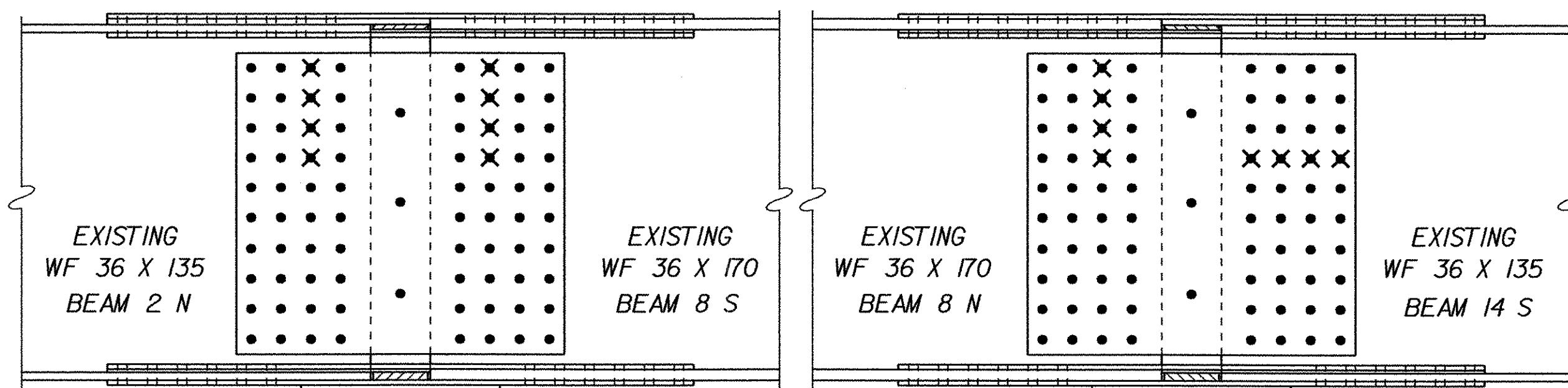
BEAM NO. 1 TO BEAM NO. 7

BEAM NO. 7 TO BEAM NO. 13



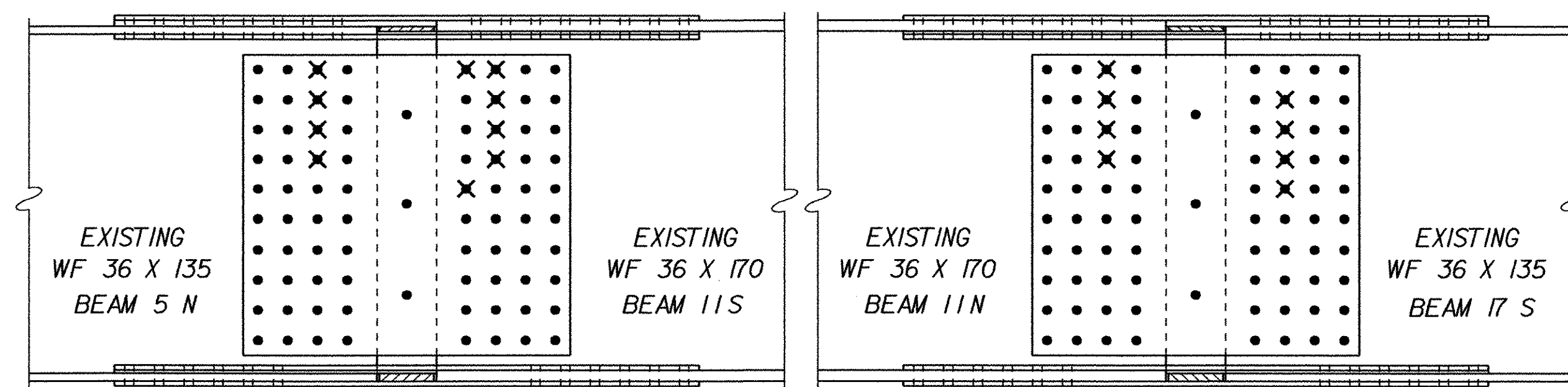
BEAM NO. 4 TO BEAM NO. 10

BEAM NO. 10 TO BEAM NO. 16



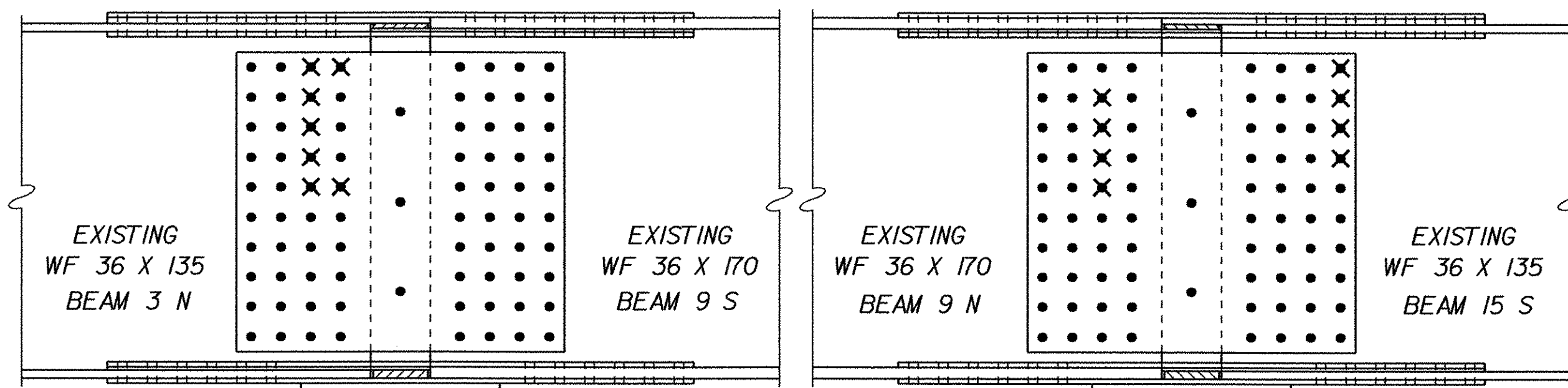
BEAM NO. 2 TO BEAM NO. 8

BEAM NO. 8 TO BEAM NO. 14



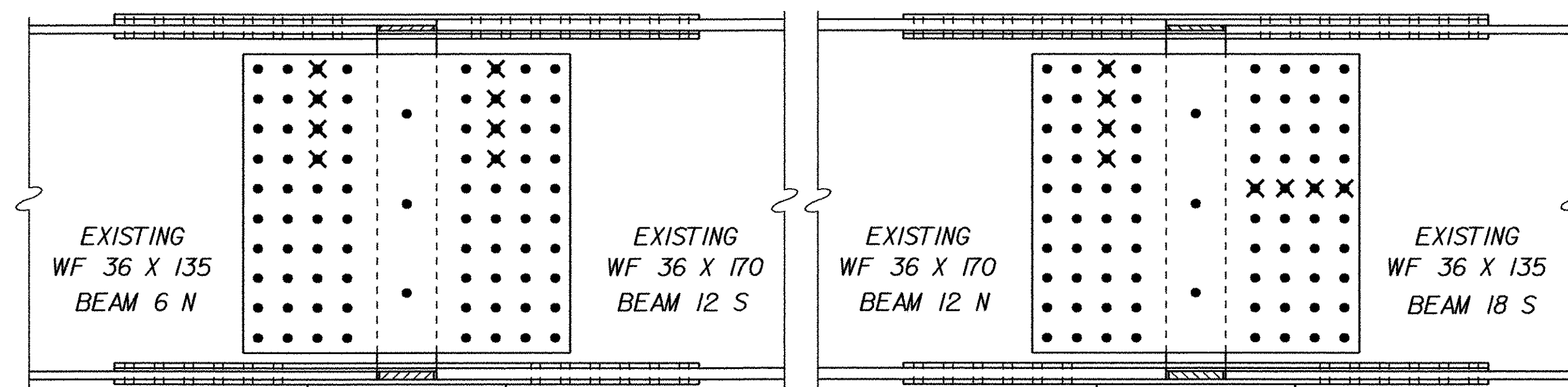
BEAM NO. 5 TO BEAM NO. 11

BEAM NO. 11 TO BEAM NO. 17



BEAM NO. 3 TO BEAM NO. 9

BEAM NO. 9 TO BEAM NO. 15



BEAM NO. 6 TO BEAM NO. 12

BEAM NO. 12 TO BEAM NO. 18

STRUCTURES COPY

SCALE: 1" = 1'-0"

STATE OF VERMONT AGENCY OF TRANSPORTATION	
Town Of <b>FAIRFAX-FAIRFIELD-ST. ALBANS</b>	Bridge No. <b>88S</b>
Highway No. <b>1-89</b>	Log Sta.
	Surv. Sta.
<b>1-89 OVER ST. ALBANS SOUTH STATE HIGHWAY (EXIT 19)</b>	
<b>88S BEAM SPLICE MODIFICATIONS - WEB</b>	
Designed By <b>M. LOZIER</b>	Drawn By <b>G. ROY</b>
Checked By <b>M. LOZIER</b>	Bridge Design Supervisor
Date <b>8/01</b>	Date <b>8/01</b>
PROJECT <b>FAIRFAX-FAIRFIELD-ST. ALBANS</b>	
PROJECT NO. <b>1M 089 - 3 (27)</b>	
I.G.C. Info. <b>96a056Structures\sa056bw1.dgn</b>	<b>sa056bw1.1</b>
Bridge Sheet No.	Sheet <b>2</b> of <b>2</b> <b>456</b>